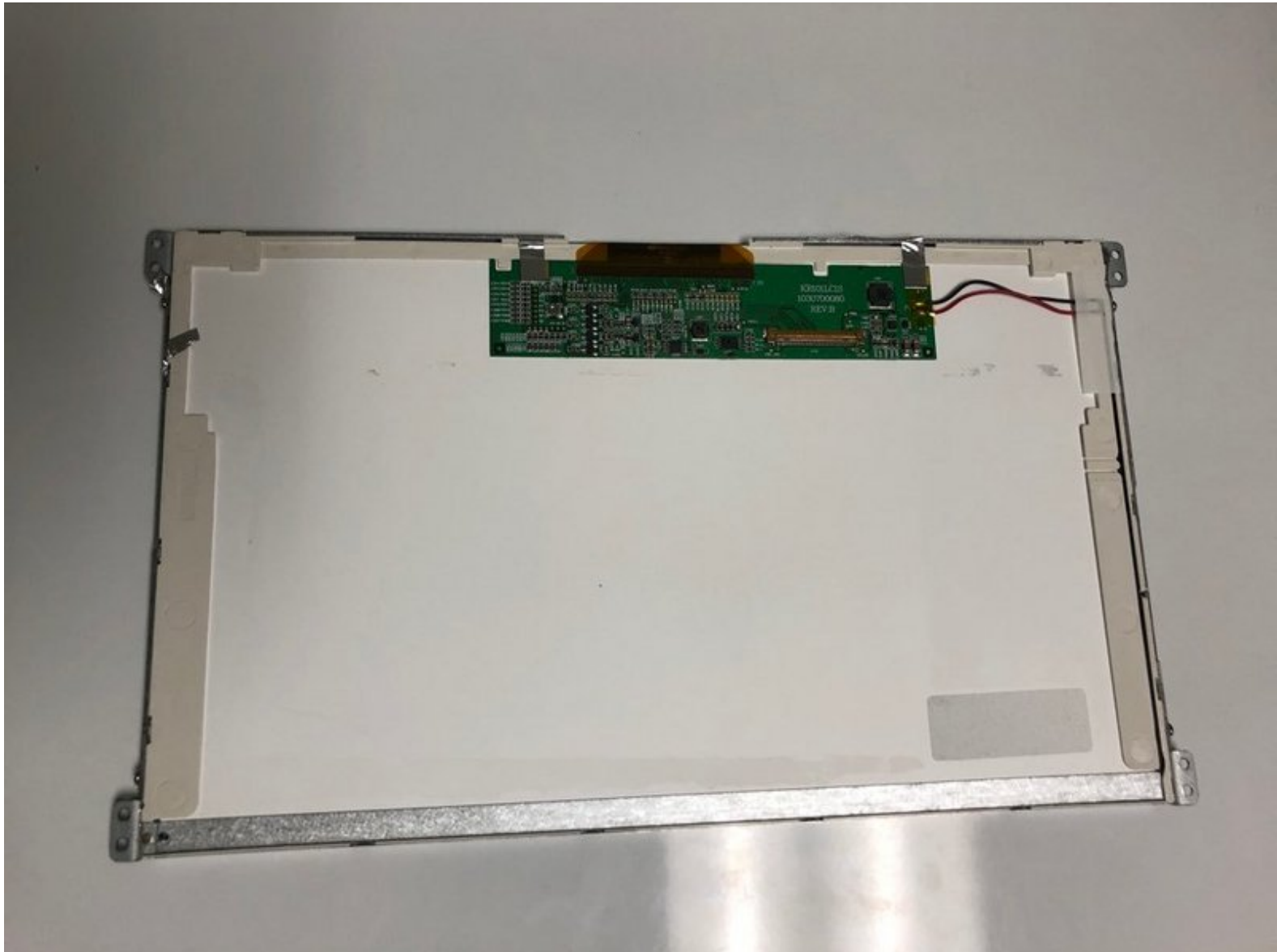




Zenithink ZTPAD ZT280 C91 Screen Replacement

This guide shows how to replace the screen in your Zenithink ZTPAD ZT280 C91.

Written By: Nicholas Davis



INTRODUCTION

Be sure to follow the prerequisites to this guide. Skipping steps can lead to damage to your device.



TOOLS:

- [Phillips #1 Screwdriver](#) (1)
 - [Phillips #00 Screwdriver](#) (1)
 - [Spudger](#) (1)
-

Step 1 — Back Panel



- Remove the two screws on the bottom using a Phillips #00 screwdriver.

ⓘ For differentiation purposes, these screws are 4mm long.

Step 2



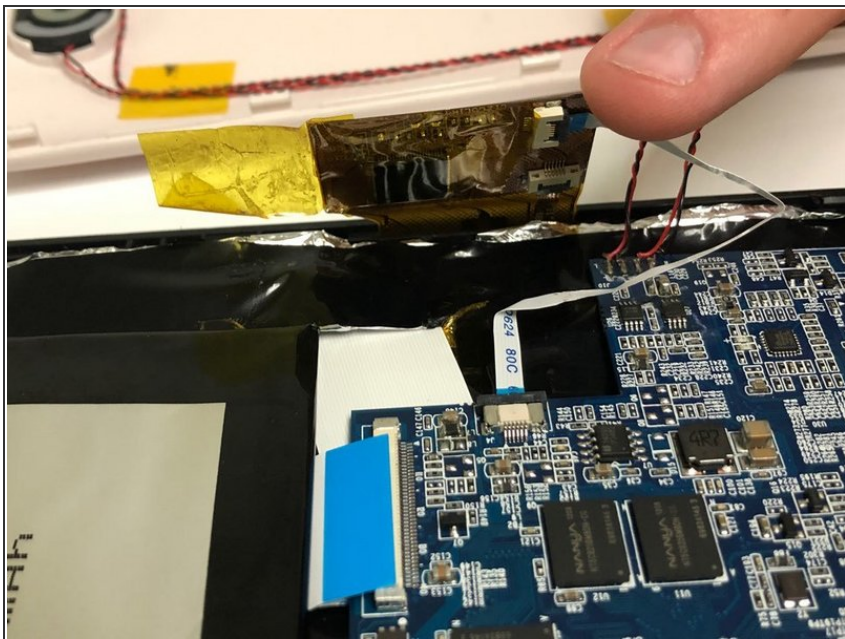
- Using a spudger, start prying the case apart by working around the edge slowly.

⚠ Be careful not to damage any of the latches that hold the back panel in place, especially if you are using a metal spudger.

ⓘ While prying, be careful to not lose the power and volume buttons; the case is the only thing holding them in place so they will easily come out once the panel has been removed

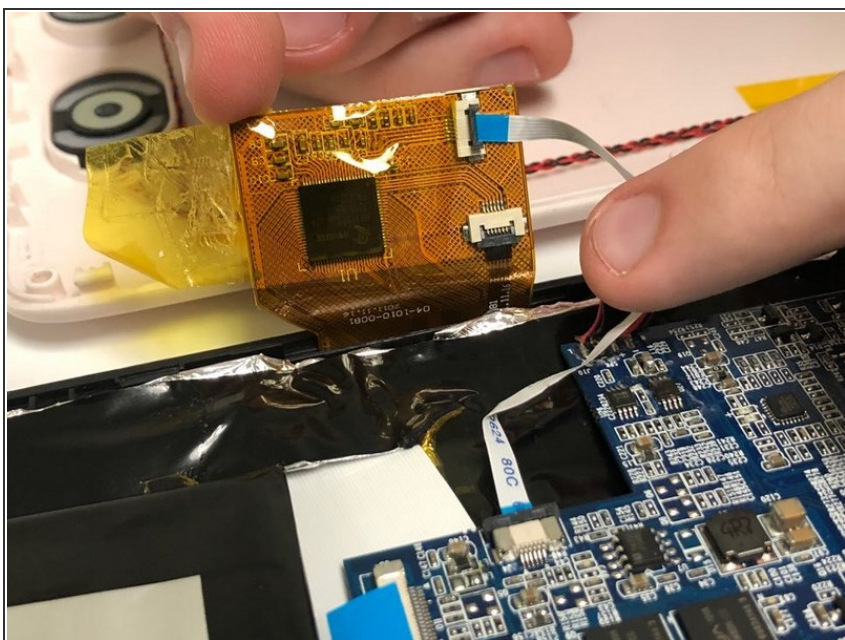
⚠ Be careful to not damage the speaker cables, they will still be connecting both panels.

Step 3 — Motherboard



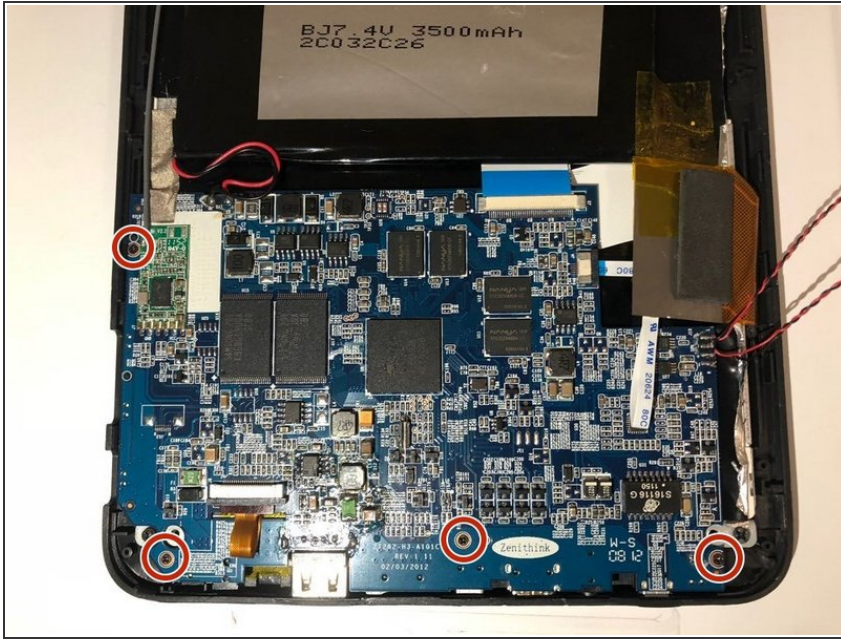
- Peel back the touch interface chip (which is on the top right of the motherboard, covered in yellow tape.)

Step 4



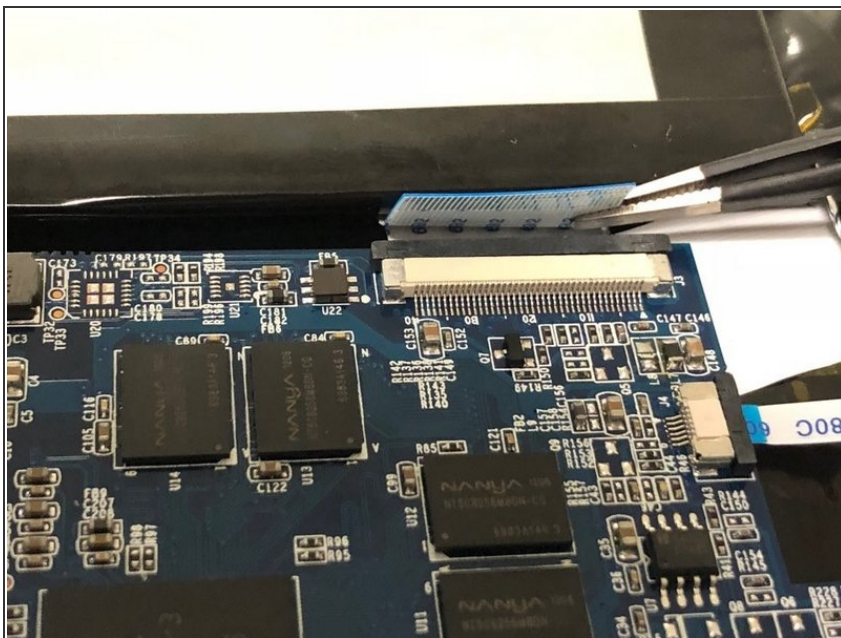
- Flip up the small gate and unplug the ribbon cable shown.

Step 5



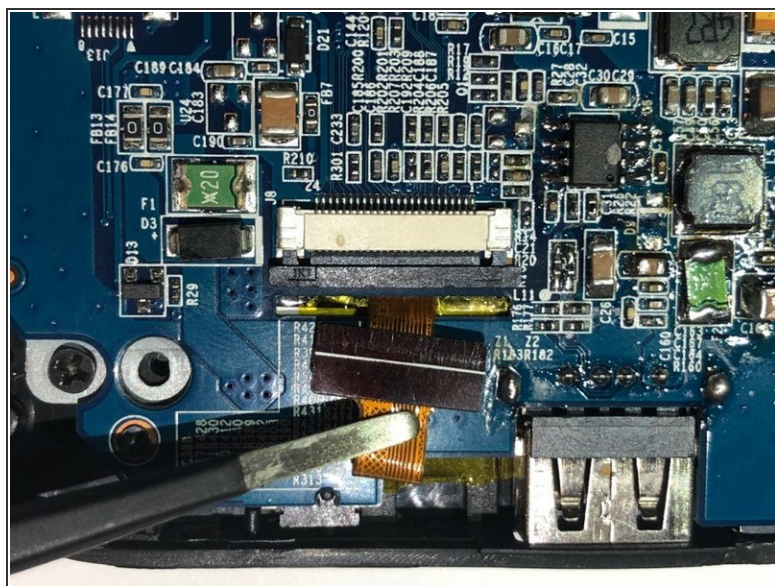
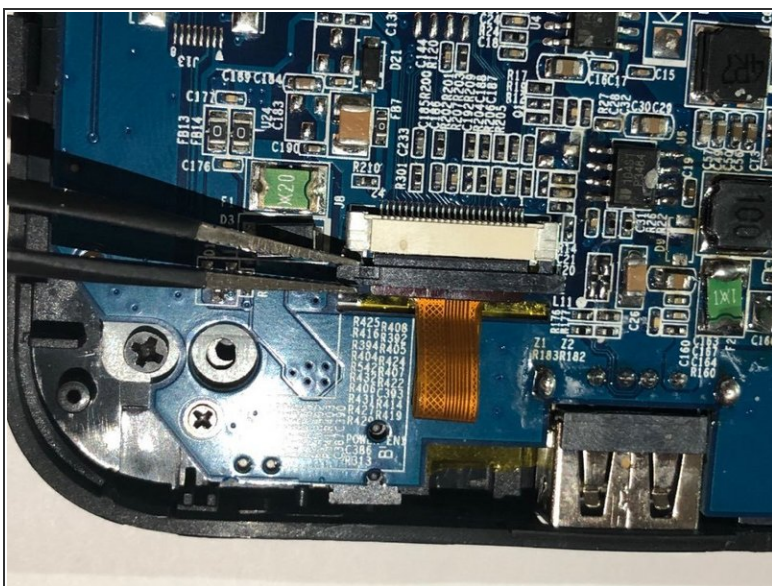
- Using a Phillips #00 screwdriver, remove the screws highlighted with the orange rings as shown in the picture.
- ⓘ For differentiation purposes, these screws are 3.5mm long.

Step 6



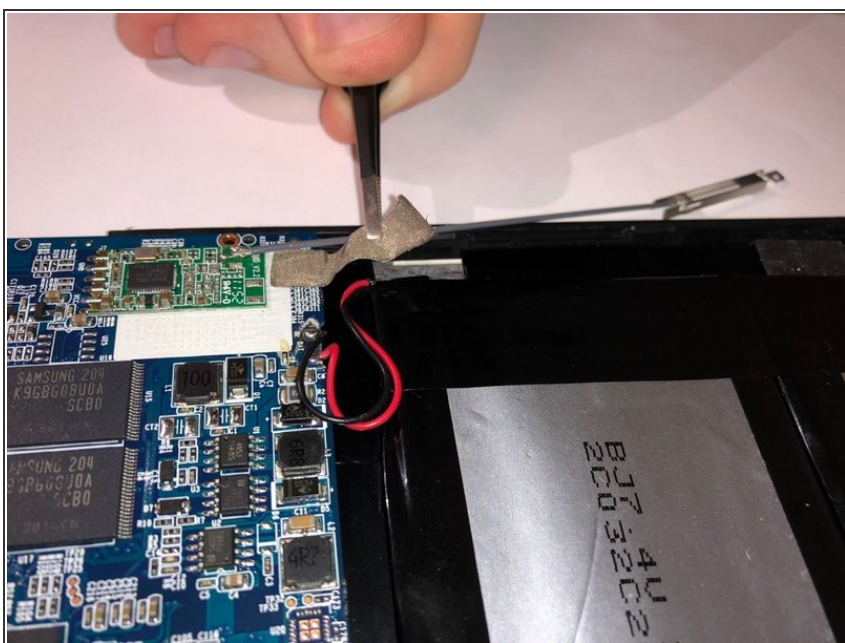
- Slide back the plastic latch for the main display cable.
- Carefully unplug the cable with tweezers.

Step 7



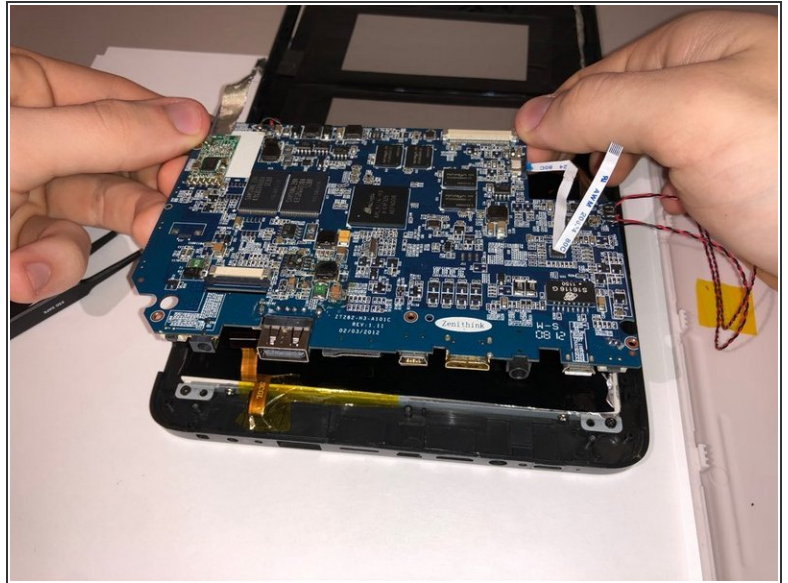
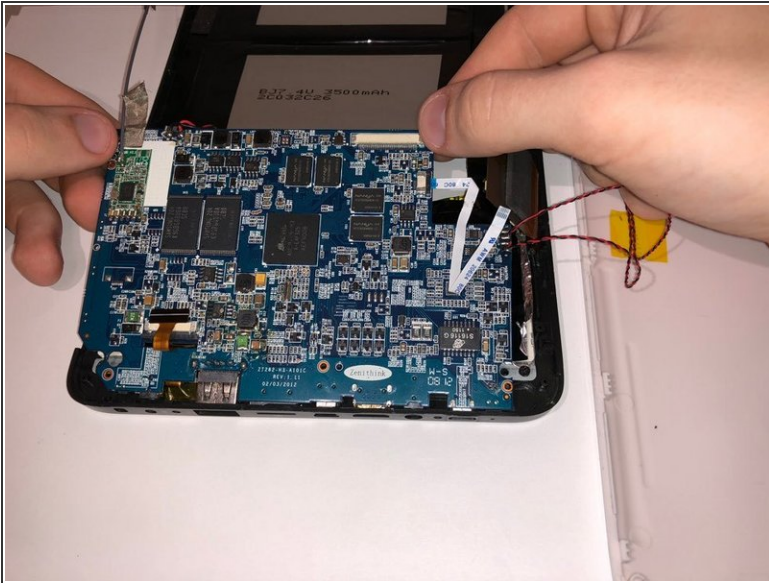
- Slide back the plastic latch for the camera cable.
- Carefully unplug the cable with tweezers.

Step 8



- Peel back the reflective tape.

Step 9



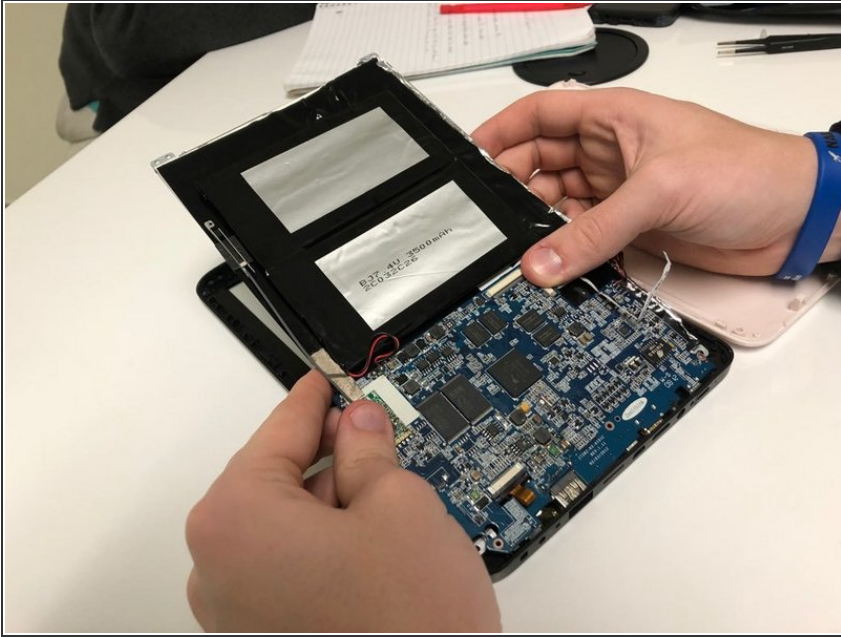
- Lift up the motherboard assembly, starting by lifting up the top.
- ⚠ Be careful not to damage any of the ports on the underside of the tablet.
- ⓘ The camera cable will slide through a small notch and end up underneath the board.

Step 10 — Front Panel




- Remove the four highlighted screws using a Phillips #1 screwdriver.
- ⓘ For differentiation purposes, these screws are 4mm long and have a larger head than the rest of the screws.

Step 11



- Starting from the top, slowly lift everything up out of the front panel.
- Remove the front panel off of the device.

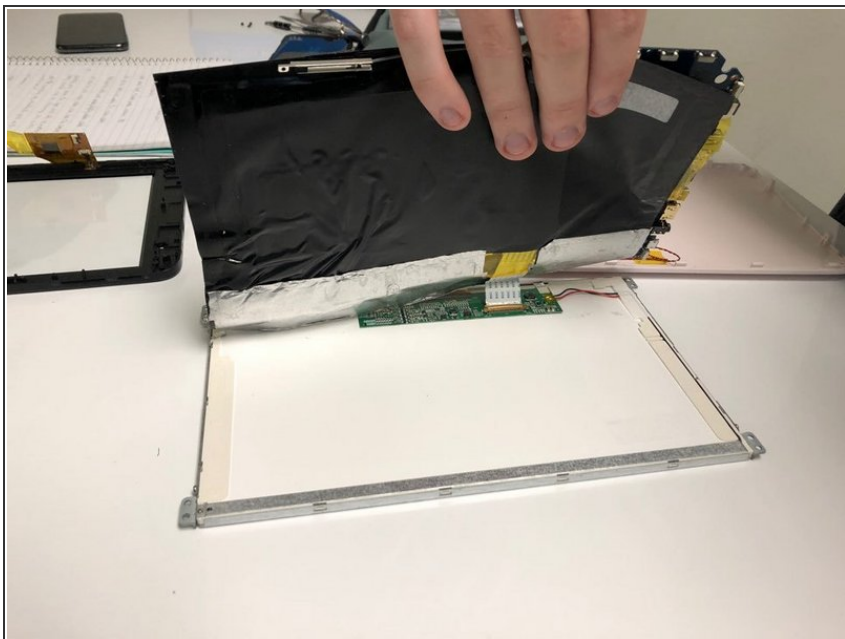
 Be careful not to damage the ports along the bottom.


Step 12 — Screen



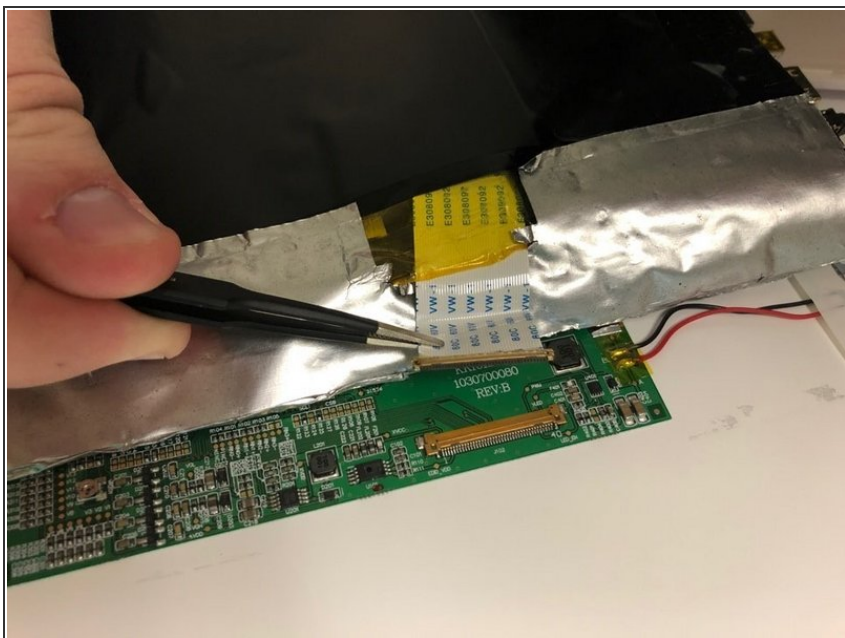
- Peel back the adhesive from one of the top corners.
- ⓘ We recommend to use only your hands to avoid damage to the battery.

Step 13



 While you're peeling the adhesive back, be careful because the display is connected by a cable on the right.

Step 14



- Using tweezers, slide back the latch and unplug the ribbon cable.
- Remove the display from the device.

To reassemble your device, follow these instructions in reverse order.