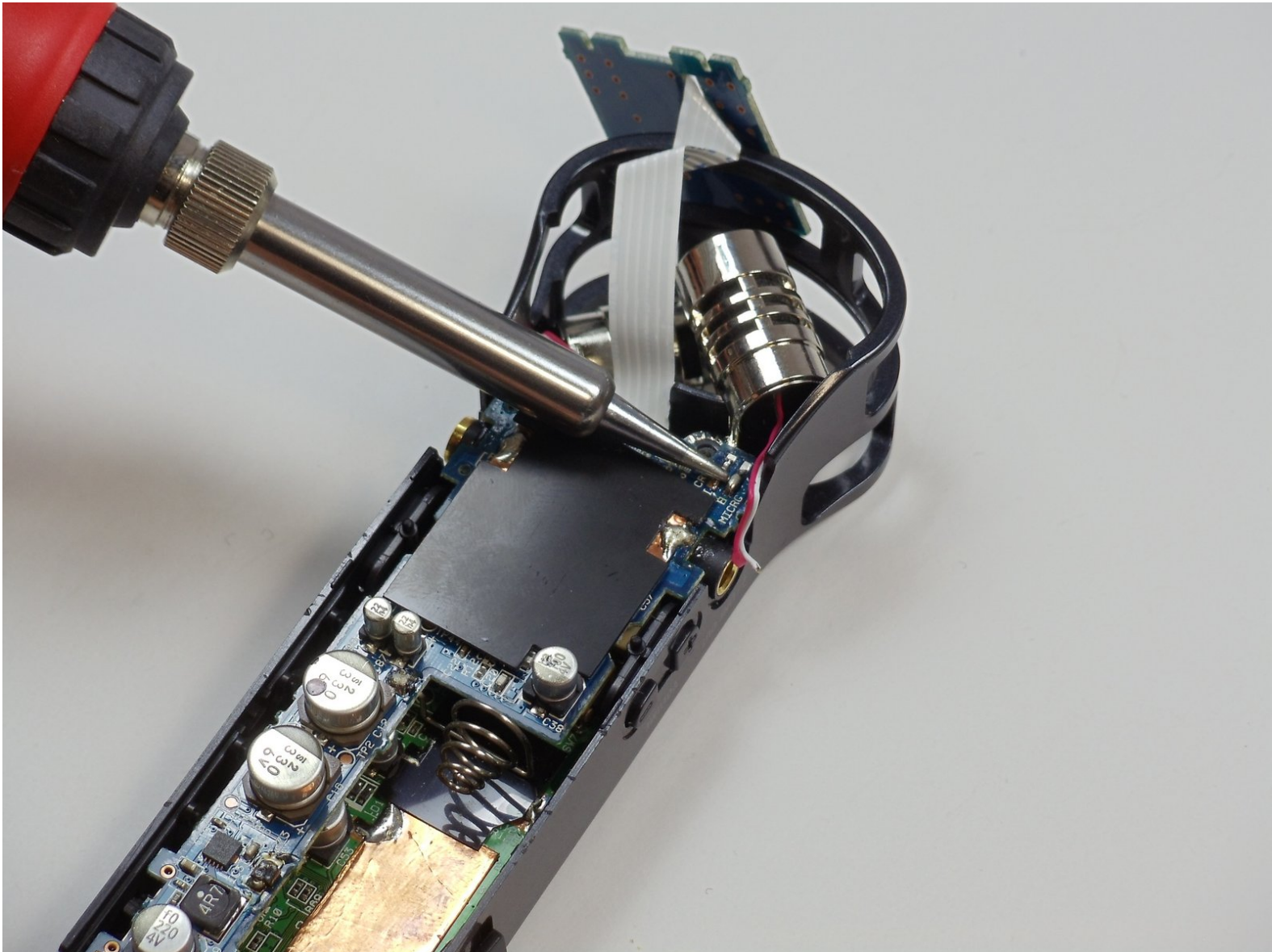




Zoom H1 Handy Recorder Microphone Replacement

This guide will show you how to remove and replace faulty microphones.

Written By: Alex





TOOLS:

- [Soldering Iron](#) (1)
 - [Phillips #00 Screwdriver](#) (1)
 - [Tweezers](#) (1)
 - [iFixit Opening Tools](#) (1)
-

Step 1 — Microphone



- Turn the device over with its display down.

Step 2



- Remove the battery cover, pressing down on the tabs and sliding.

Step 3



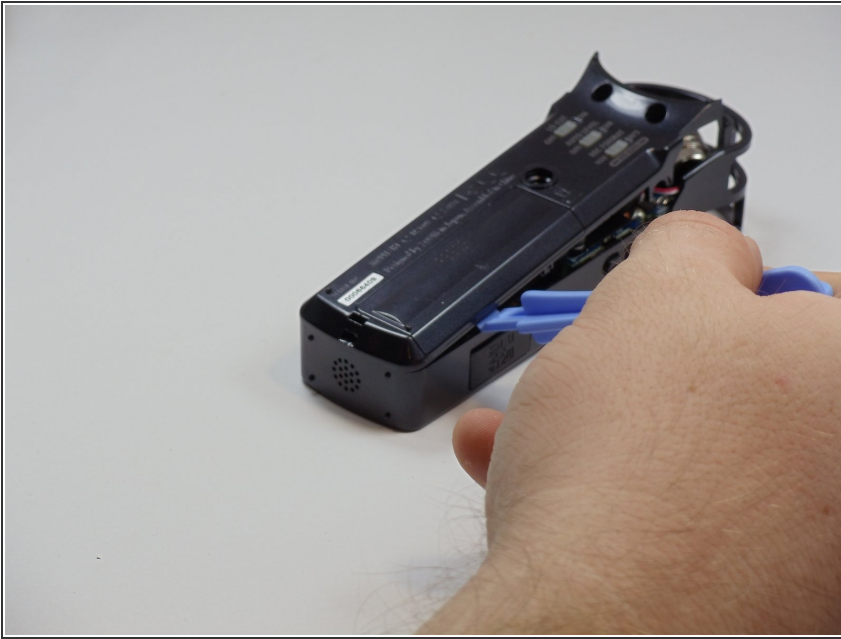
- Unscrew the two (2) #00, 10 mm screws located below the mic on the back cover.

Step 4



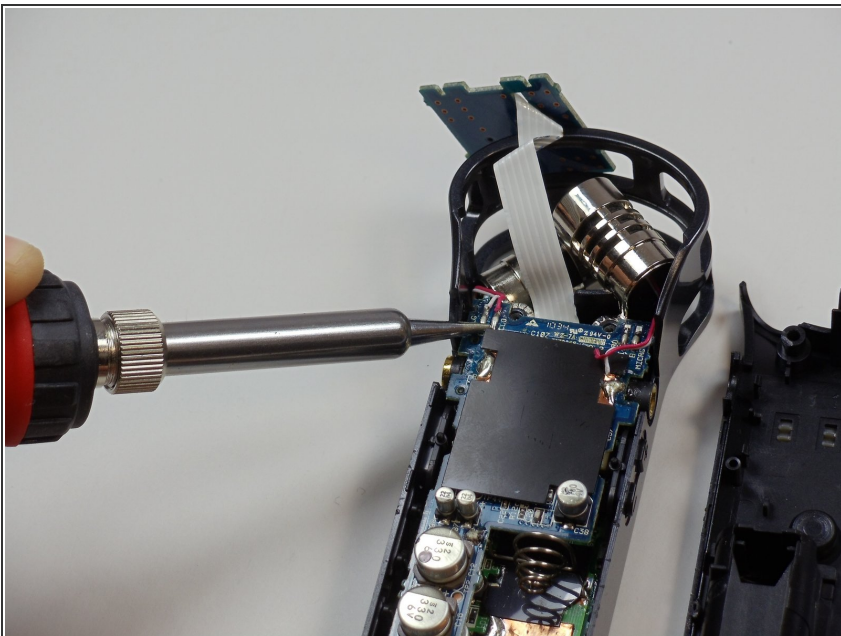
- Carefully pry up the top end of the back cover using one finger.

Step 5



- Remove the back plate by using a plastic removal tool to pry the back cover up around the edges.

Step 6



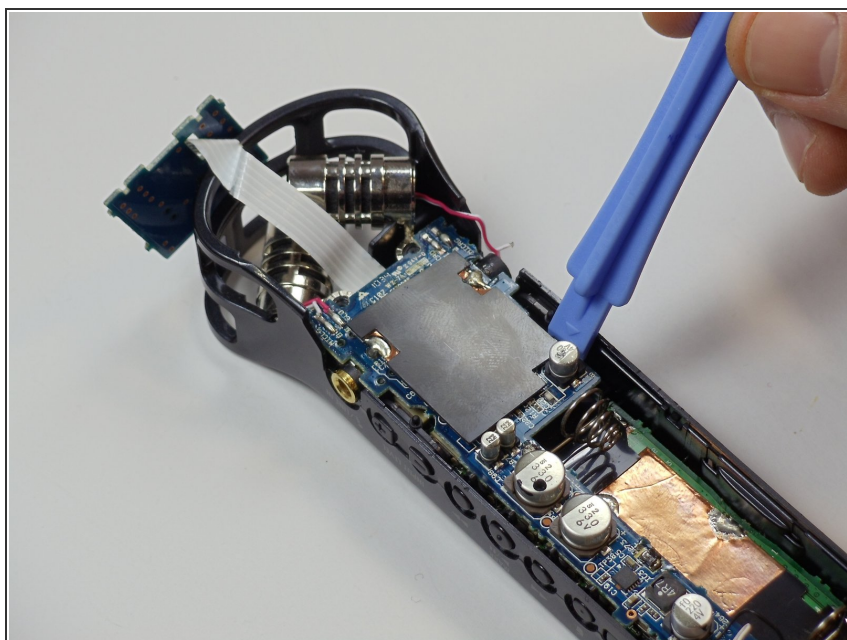
- De-solder the red and white leads of the microphone from their solder points.
- Solder points are located on the blue circuit board just above the black shielding.
- ⓘ Take note of which color lead goes to which soldering point, this will come up during resoldering.

Step 7



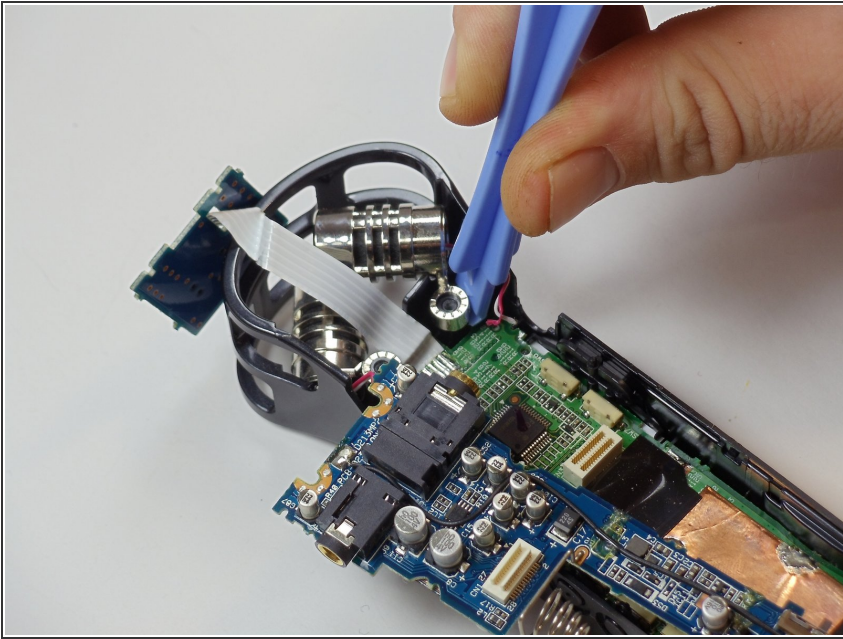
- Unscrew the blue circuit board.
- The board is held down by a single screw located at the bottom of the device, just to the left of the lowest battery terminal.

Step 8



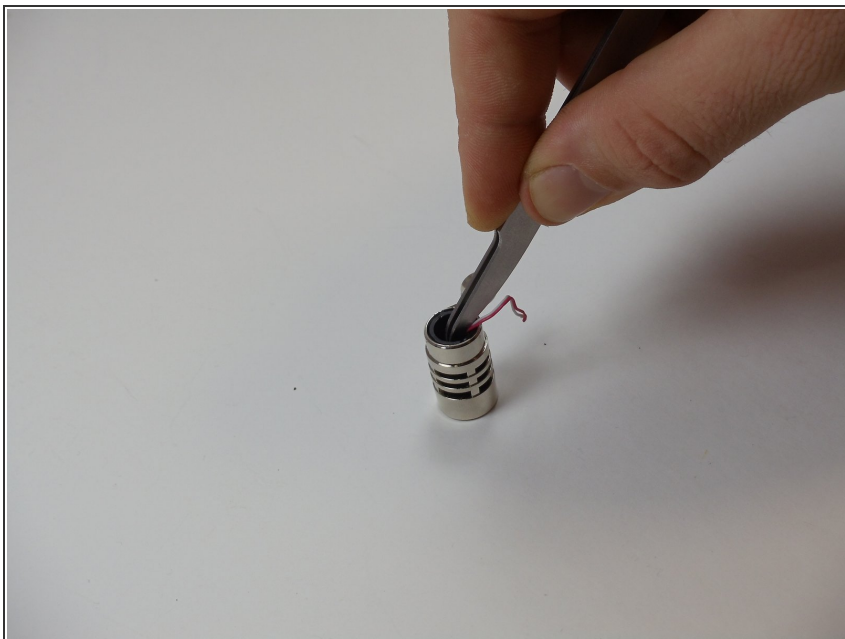
- Use the plastic removal tool to gently pry up the blue circuit board, allowing access to the microphones.

Step 9



- Use a plastic removal tool to pull the microphone casing off of its post.

Step 10



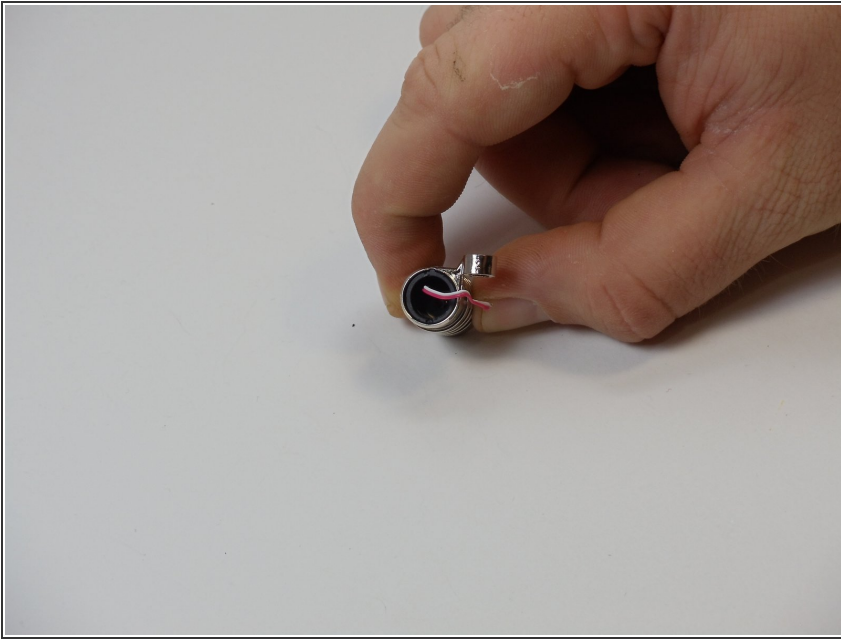
- Insert the tip of the angled tweezers into the hole in the black plastic located within the microphone case. Use the tweezers to pull the microphone out of the casing.

Step 11



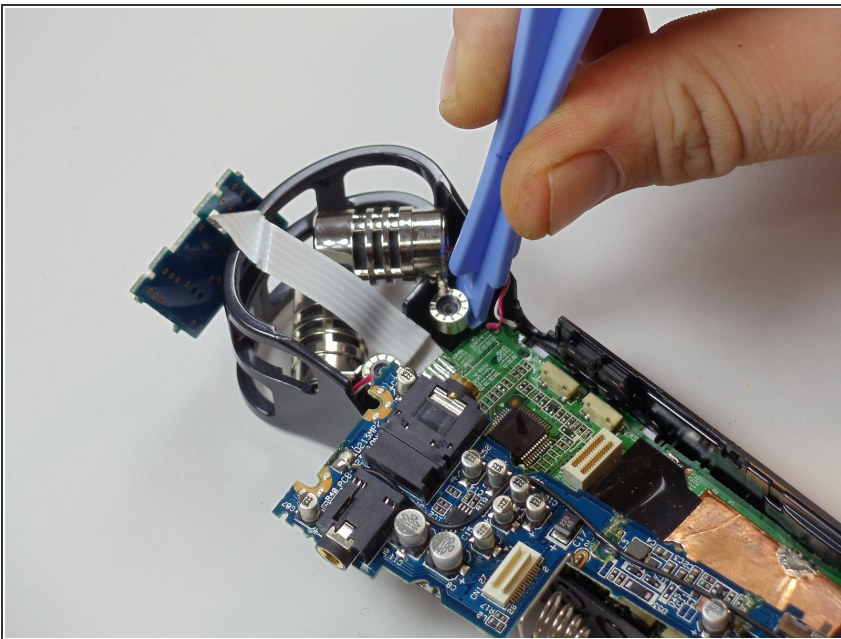
- Remove the faulty microphone by pulling the leads through the black plastic insert.

Step 12



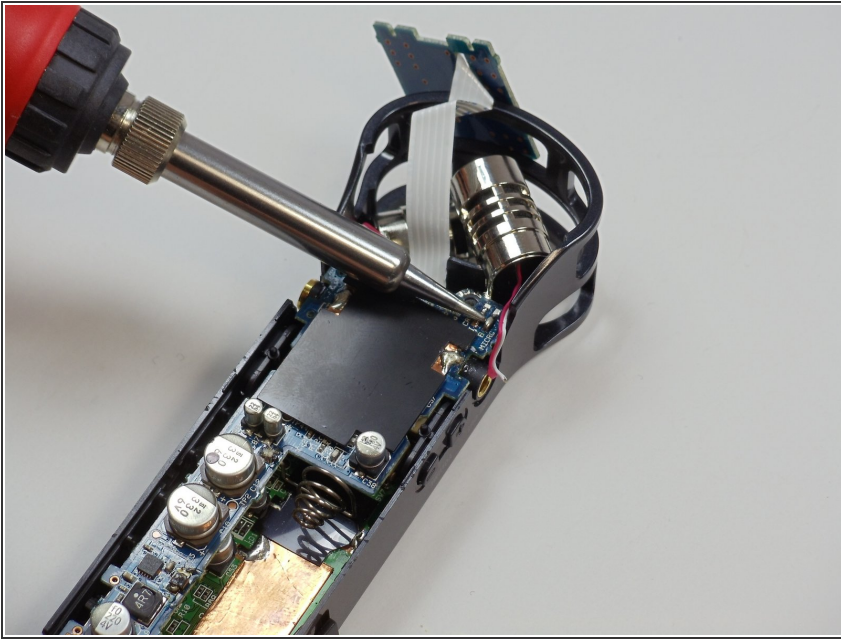
- Insert the leads of the new microphone into the plastic insert and reinsert into the silver microphone casing.

Step 13



- Re-attach the microphone case to the post it came off of.

Step 14



- Solder the leads of the new microphones to the same spots on the blue circuit board.
- Ensure that each white lead is soldered to the solder point closest to each edge of its corresponding side, while each red lead is soldered to the inner point on its corresponding side.

To reassemble your device, follow these instructions in reverse order.