



Zoomer Jurassic World Indominus Rex Back Cover Replacement

This is a prerequisite guide that you need to do before doing other guides such as motherboard replacement and battery replacement.

Written By: Anh Le



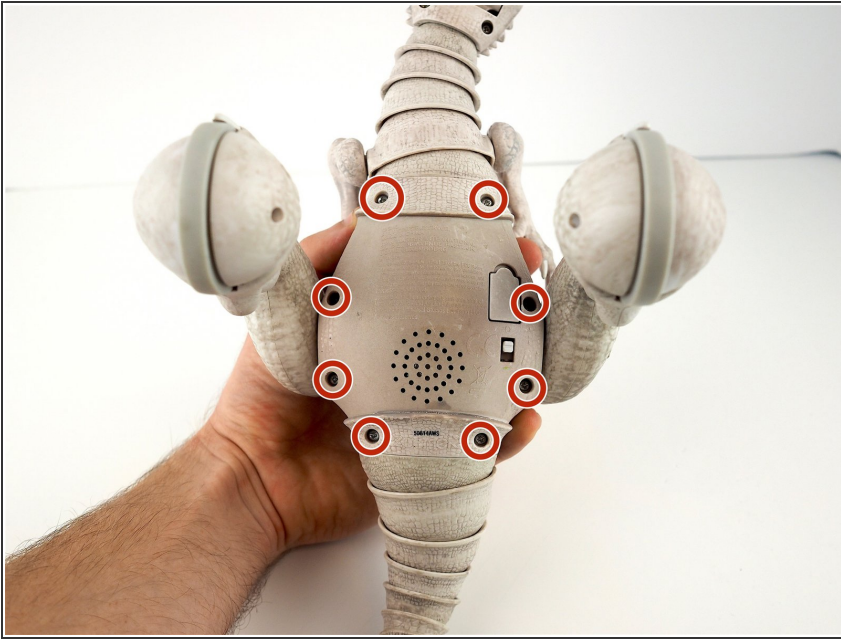
INTRODUCTION

Remove the back cover of the Zoomer Jurassic World Indominus Rex to get access to the motherboard, battery and the mechanical systems of the toy.

TOOLS:

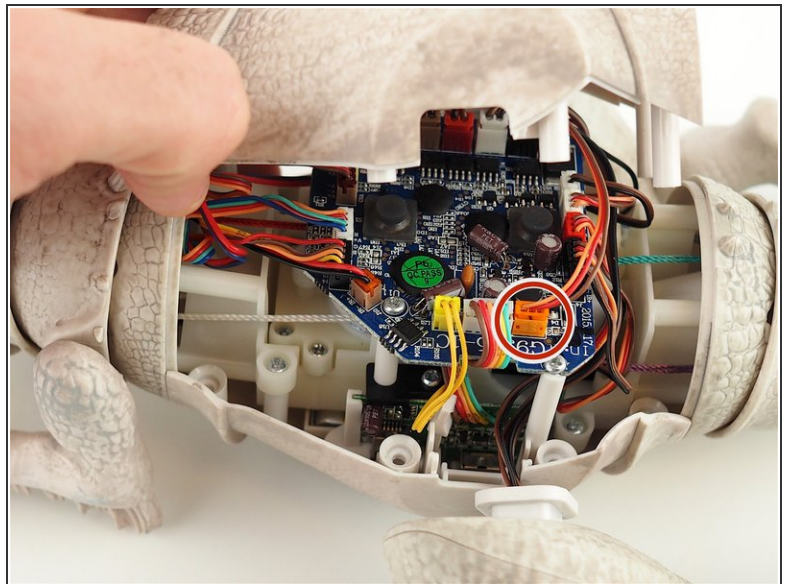
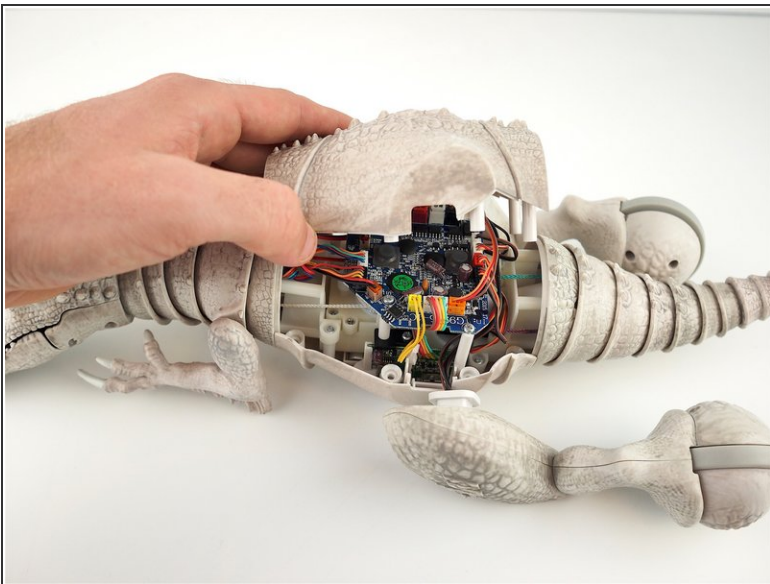
- [Heavy-Duty Spudger](#) (1)
 - [Phillips #1 Screwdriver](#) (1)
-

Step 1 — Back Cover



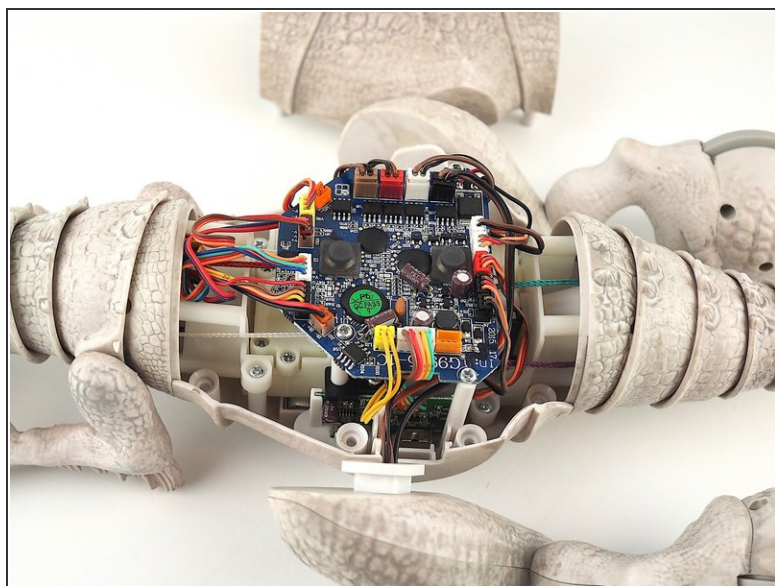
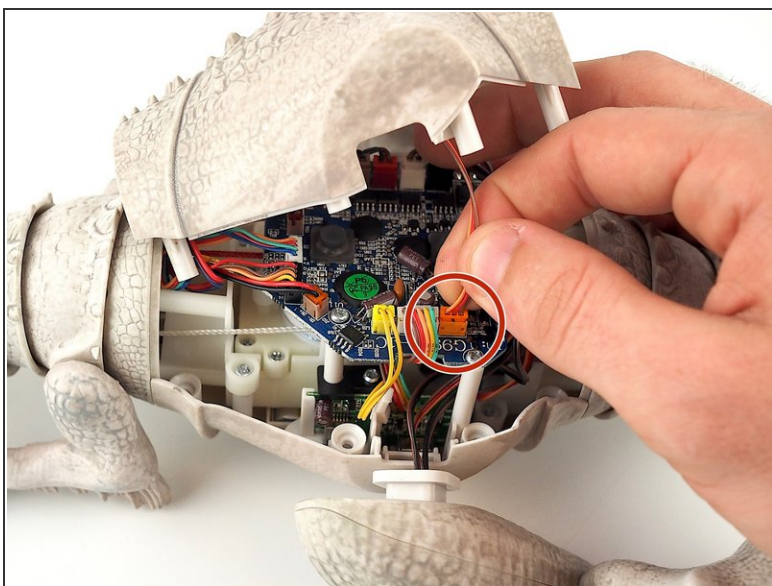
- i Turn off and unplug Zoomer Jurassic World Indominus Rex from any power source before doing replacements.
- Remove all eight (8) 9.3mm Phillips screws using Phillips #1 screwdriver.

Step 2



- Pry apart the back cover of the Jurassic Indominus Rex and the rest of the body using a spudger.
- ⚠ Do not take out the back cover immediately as it is still attached to the motherboard by a wire.

Step 3



- Disconnect the orange wire that connects the motherboard and the back cover.
- Separate the back cover and the rest of the Zoomer Jurassic World Indominus Rex.
- ⓘ Gently press the tab on the side of the orange connector if you are having trouble disconnecting the wire.

To reassemble your device, follow these instructions in reverse order.