



# Zoomer Meowzies Speaker Replacement

To replace a damaged or faulty speaker of your Zoomer Meowzies.

Written By: Mitchell Gentry



# INTRODUCTION

This guide will go over how to remove and replace a faulty speaker of a Zoomer Meowzies.



## TOOLS:

- [Phillips #1 Screwdriver](#) (1)
- [Triangular headed Screwdriver](#) (1)
- [Soldering Iron](#) (1)
- [Solder](#) (1)



## PARTS:

- [Speaker](#) (1)

## Step 1 — Legs



- Using the Triangle driver remove the four 7.5 mm screws.
- ⓘ The two front screws are deeper than the two on the back legs which may cause difficulties. These can be reached by putting the bit in first then carefully putting the driver on slightly (not all the way)

## Step 2



- Turn the device so that the the device is on its side.
- Hold the back and belly on the device and gently pull apart.
- ⚠ Pulling with too much force might damage a few cables inside, so caution is needed.

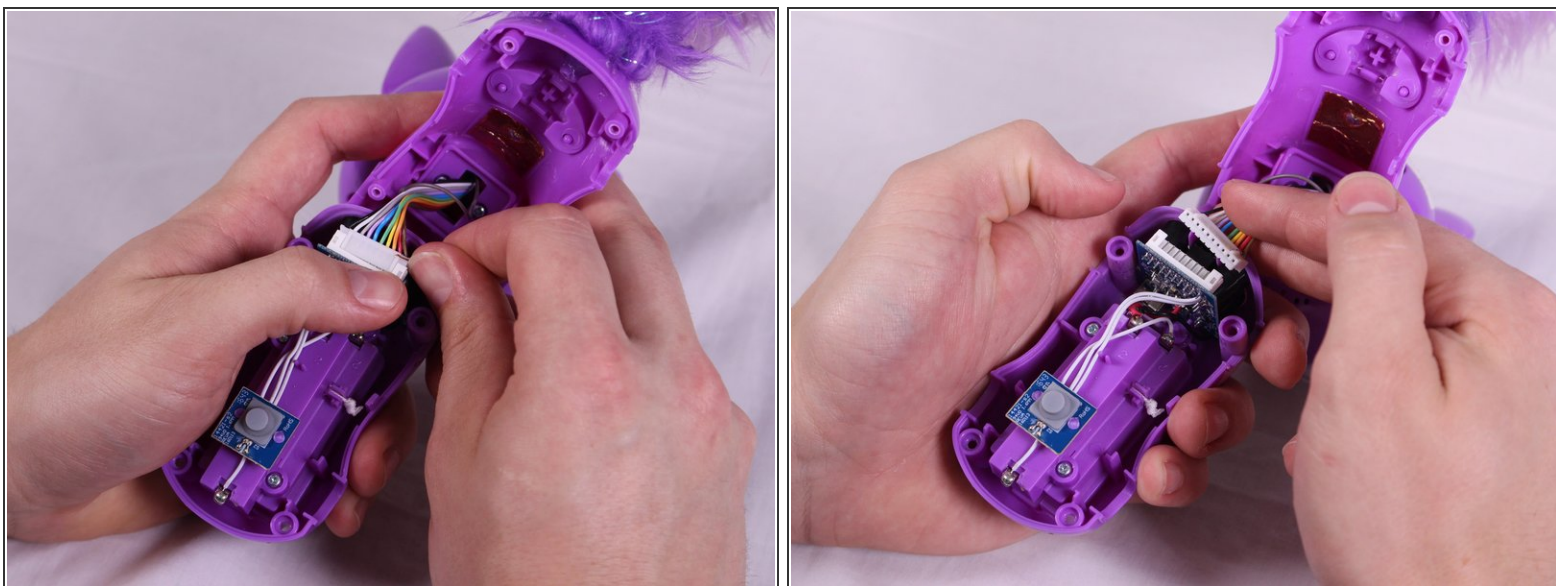


### Step 3



- With insides exposed, grab leg and gently pull up and away from the body to detach them. Repeat for all legs needed.

### Step 4 — Head (Bottom)





- Gently pry the ribbon cable from the connector.

## Step 5

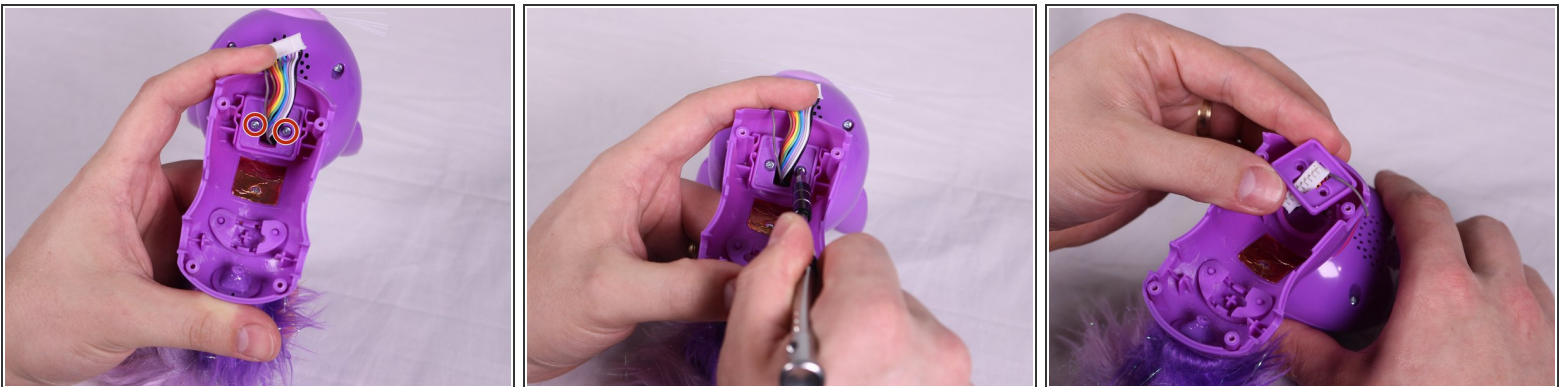


- Using a soldering Iron, carefully heat the solder point around the silver wire and pull gently until the wire lifts free.


 The soldering iron and solder get very hot, so caution is advised to avoid touching either directly.

 This step may be skipped but if so care must be taken to not accidentally pull the wire from the contact. Skipping this step will limit the amount of room that is available to work with.

## Step 6



- Take the upper half of the device in hand.
- Using the Philips #1 driver remove the two 9.5mm screws.
- Remove the purple square collar around the neck of the device.

 The wires can prove difficult to get through the opening in the collar. Move wires through the opening carefully.

## Step 7



- Turn the device so that it is on its side.
- Holding the device's head and back in each hand, pull apart to separate the head from the body.
- Pull the wires through and manipulate carefully as needed to get them through and completely detach head.

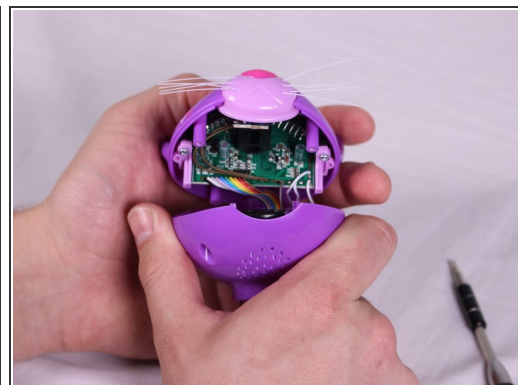


## Step 8



- Turn the head upside-down so that ears are facing down, and locate the four screws around the underside of the device's head.
- Use the Triangle screwdriver to remove the four 7.5mm screws.

## Step 9



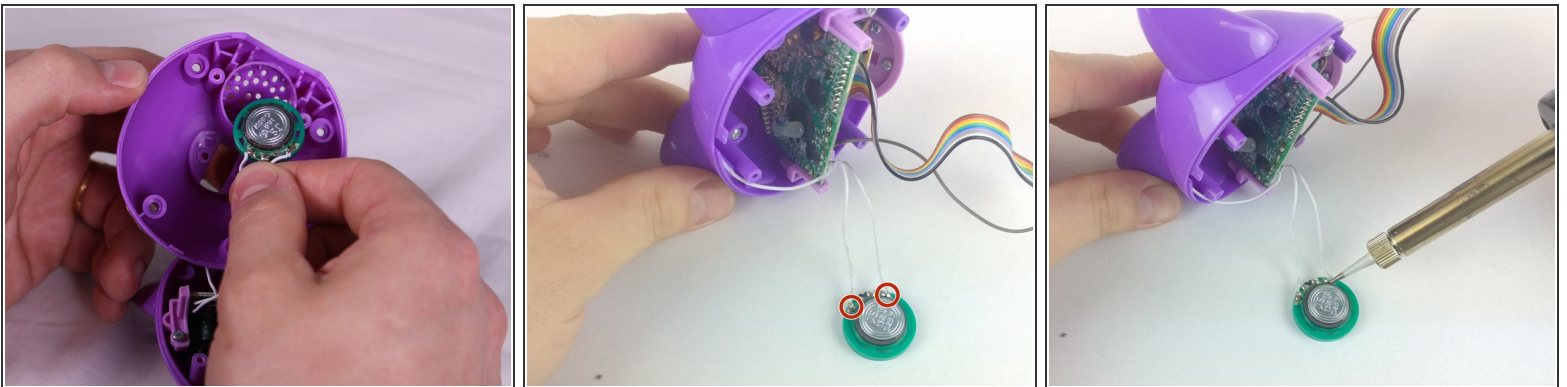
- Hold the top and bottom halves of the head in each hand separately and gently pull away from each other to separate both halves.

## Step 10 — Speaker



- On the bottom half of the device's head, locate the two screws on each side of the speaker. Using the Phillips #1 driver remove the two 7mm screws.
- Remove the black brace holding the speaker by gently pulling on it. The speaker will likely fall out after lifting the black brace.

## Step 11



- Remove the speaker and place down on a flat surface. The speaker will remain attached by two white wires.
  - Using the soldering iron, heat the soldering points and carefully pull the two wires away from the speaker to completely detach.
- ⚠ The soldering iron is very hot, so take caution not to touch it directly in order to avoid any burns to the body.



To reassemble your device, follow these instructions in reverse order.