



Zoomer Meowzies Wheels Replacement

This is a guide to replace the wheels on the legs of the Zoomer Meowzies.

Written By: Muataz Alahmadi



INTRODUCTION

This is a guide to replace the wheels on the legs of the Zoomer Meowzies. Useful when needing to replace a broken wheel or simply for cleaning the wheels.

TOOLS:

- [Phillips #1 Screwdriver](#) (1)
 - [Triangular headed Screwdriver](#) (1)
-

Step 1 — Legs



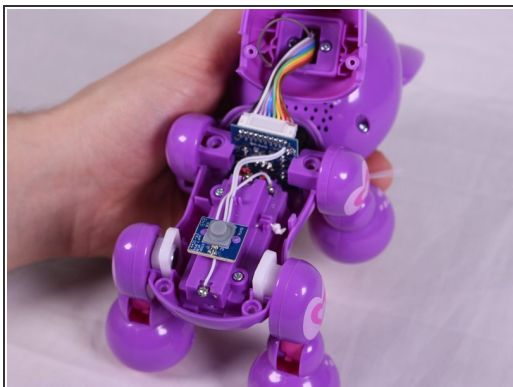
- Using the Triangle driver remove the four 7.5 mm screws.
- ⓘ The two front screws are deeper than the two on the back legs which may cause difficulties. These can be reached by putting the bit in first then carefully putting the driver on slightly (not all the way)

Step 2



- Turn the device so that the the device is on its side.
- Hold the back and belly on the device and gently pull apart.
- ⚠ Pulling with too much force might damage a few cables inside, so caution is needed.

Step 3



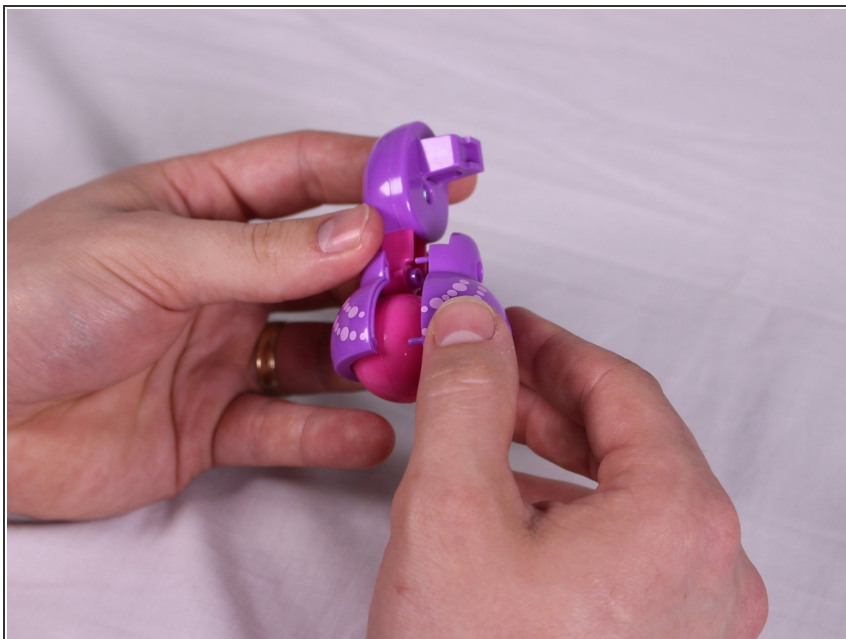
- With insides exposed, grab leg and gently pull up and away from the body to detach them. Repeat for all legs needed.

Step 4 — Wheels



- Turn the Zoomer Meowzies leg to its side.
- Using the Triangle driver remove the two bottom 7 mm screws.

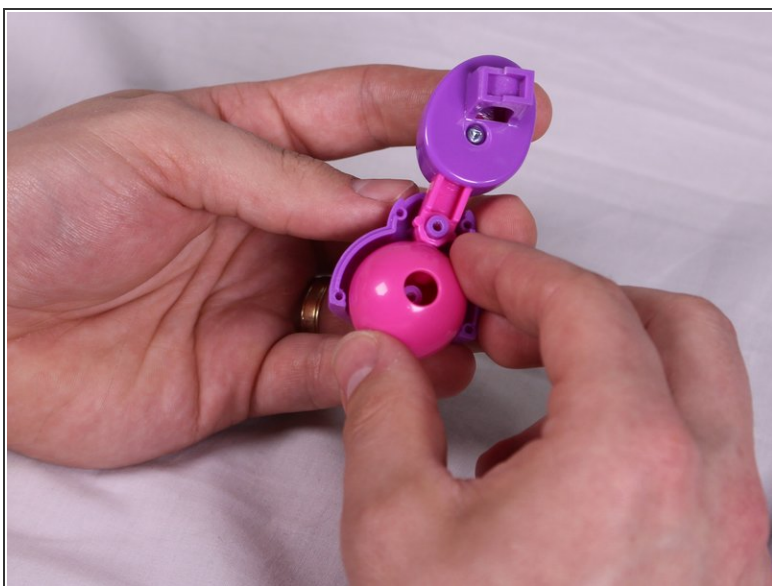
Step 5



- Hold both sides of the leg and gently pull apart.

⚠ If pulled apart too forcefully the rest of the leg may sustain damage. Caution is advised.

Step 6



- Wheel should now be exposed. Pull wheel up and away from the rest of the leg to remove. Replace with new wheel if necessary.

To reassemble your device, follow these instructions in reverse order.

This document was generated on 2019-09-22 02:30:52 PM (MST).

