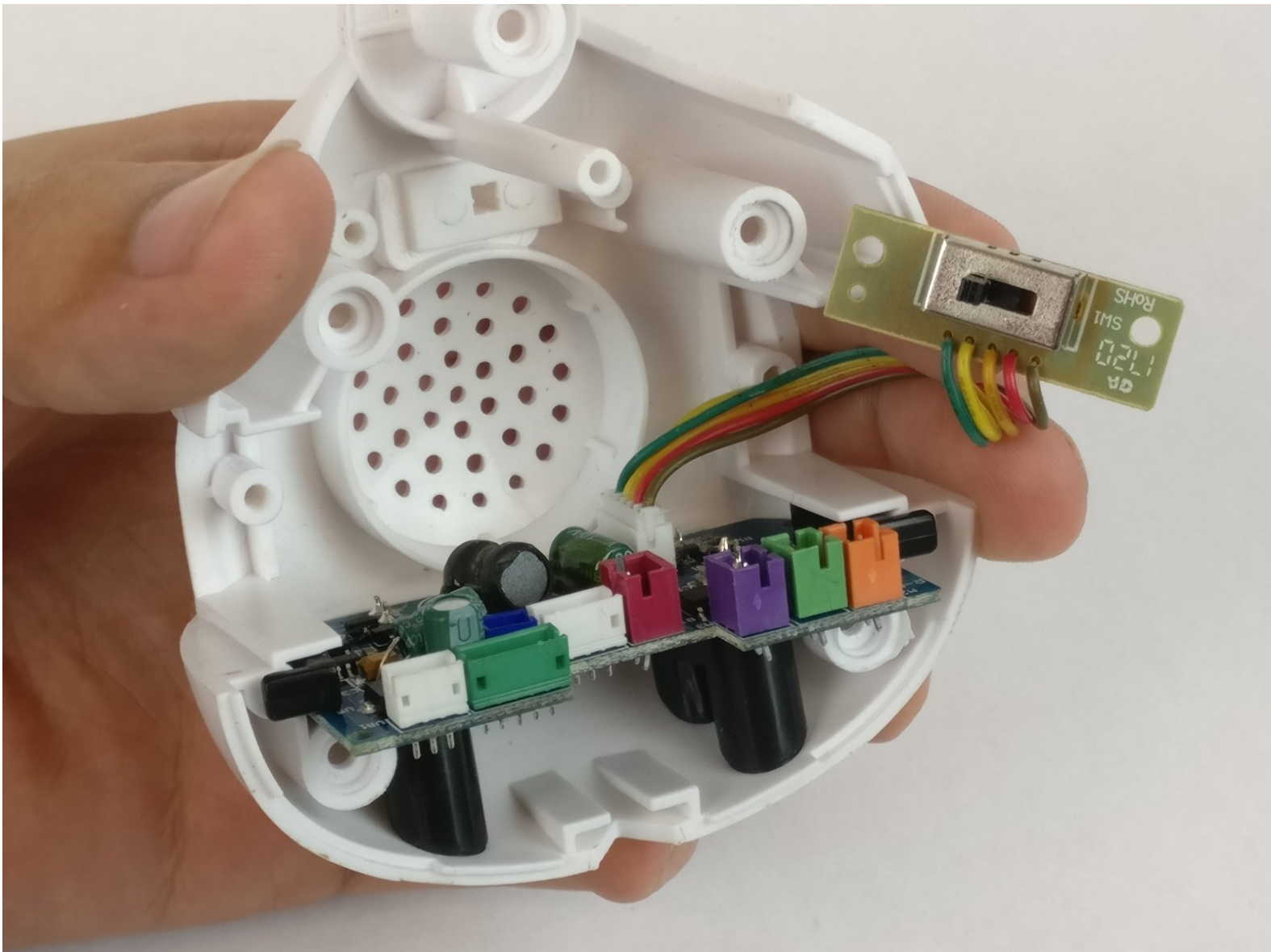




Zoomer Show Pony Power and Volume Switch Replacement

A power and volume replacement guide for the Zoomer Show Pony. If your pony does not turn on, try this first.

Written By: Matthew Sutton



INTRODUCTION

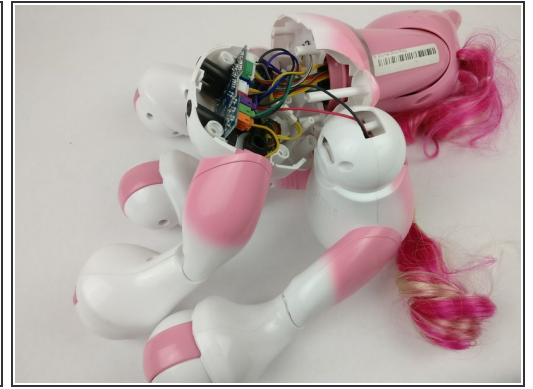
This guide will go step by step showing you how to get to and replace the power switch on the bottom of your Zoomer Show Pony. You will have to open up the pony's main chassis and disconnect the wires on the pony's motherboard. All of the triangle head screws in this guide are the same size, so no worries about keeping each screw separated.



TOOLS:

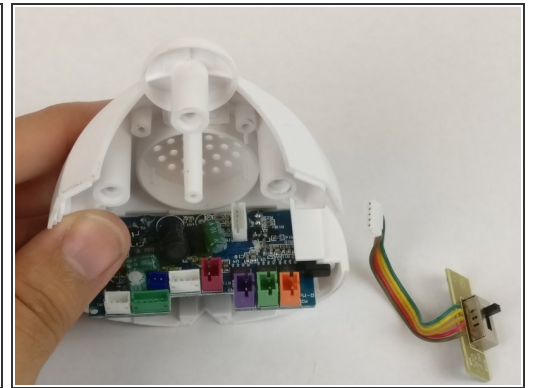
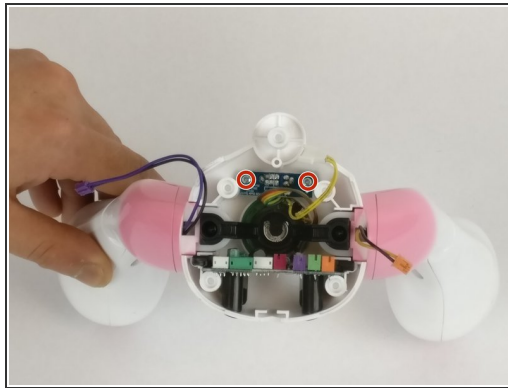
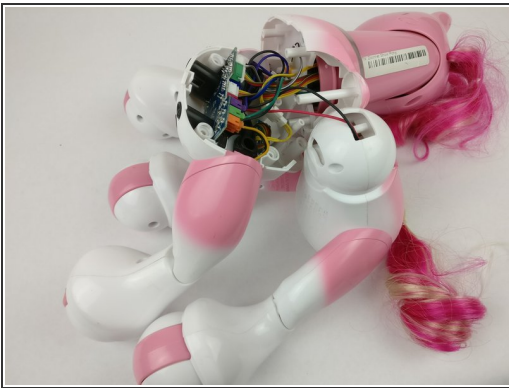
- [Phillips #0 Screwdriver](#) (1)
 - [Triangle 3 Screwdriver](#) (1)
-

Step 1 — Power and Volume Switch



- Flip the pony over.
- Remove the five Triangle 3 screws from underneath.
- ⓘ The pony will separate into a few pieces once the screws are removed.

Step 2



- Disconnect all of the wires between the head and leg sections.
- To replace the power/volume switch, remove the two Phillips #0 screws from the switch.
- Lift the switch out to replace.

To reassemble your device, follow these instructions in reverse order.