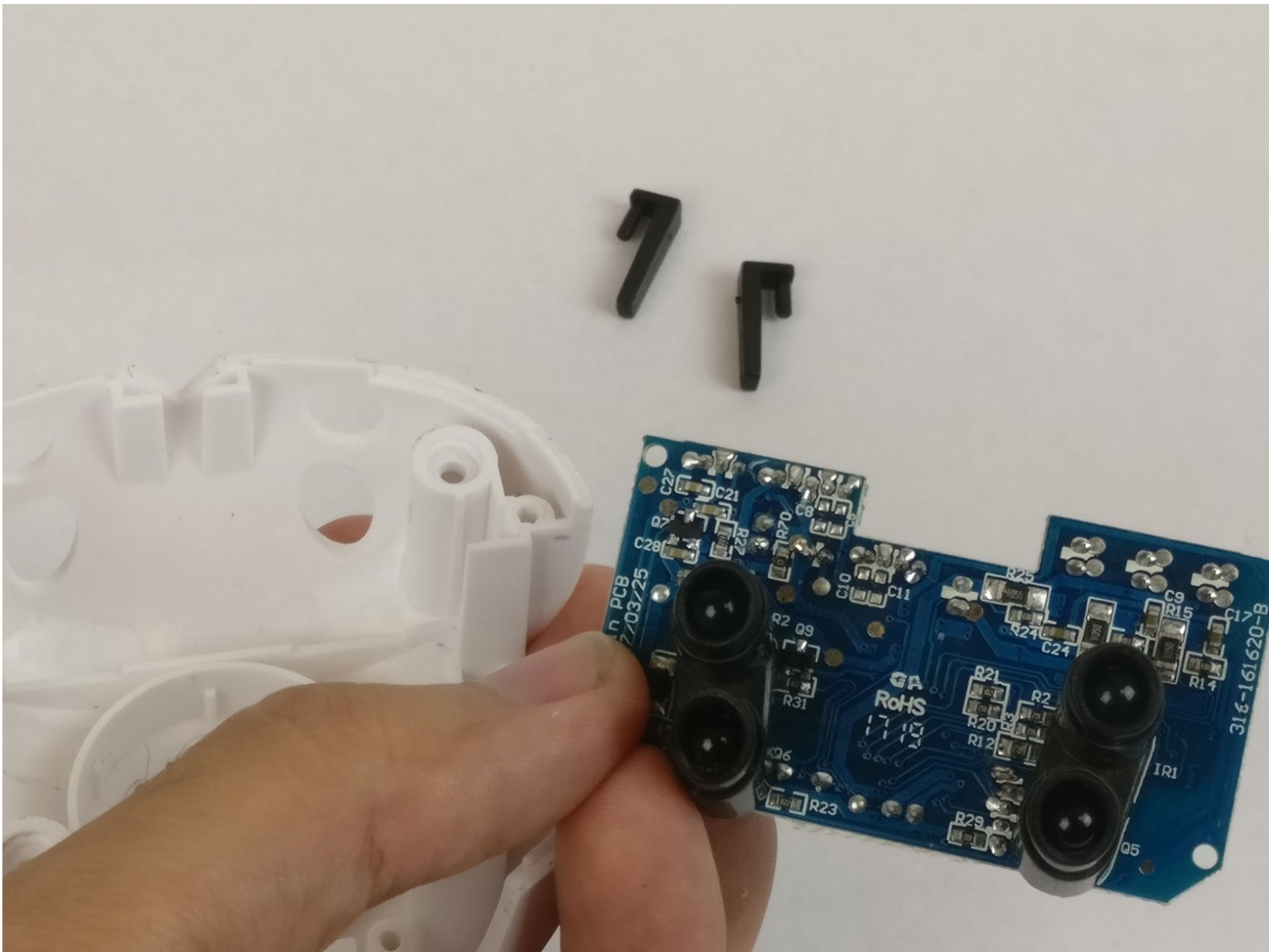




# Zoomer Show Pony Sensor Replacement

This guide will show you how to replace the sensors on your Zoomer Show Pony if they are not working as intended.

Written By: Cedric Bossa



## INTRODUCTION

This guide will go step by step showing you how to get to and replace the sensors inside the body of your Zoomer Show Pony. You will have to open up the pony's main chassis and disconnect the wires on the pony's motherboard. All of the triangle head screws in this guide are the same size, so no worries about keeping each screw separated.



### TOOLS:

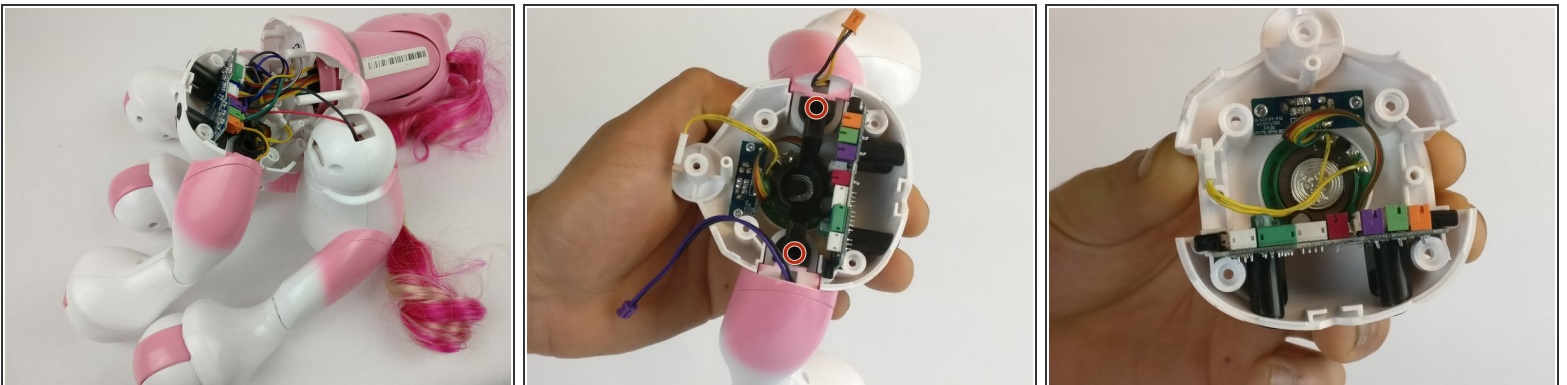
- [Triangle 3 Screwdriver](#) (1)
-

## Step 1 — Sensor



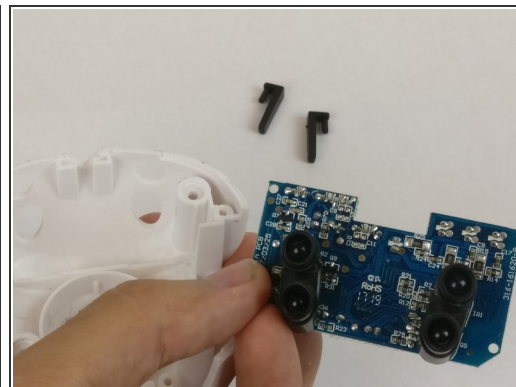
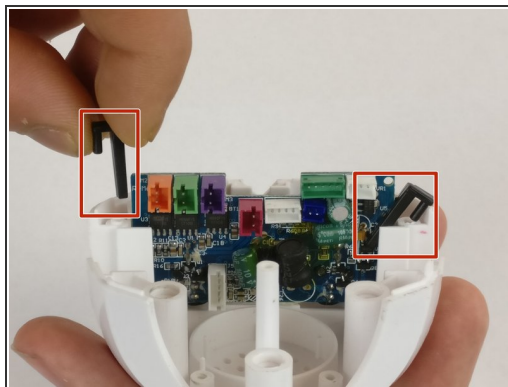
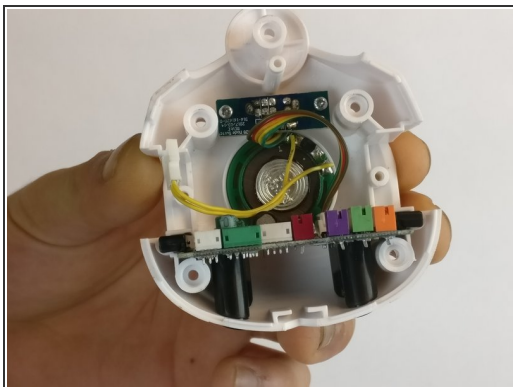
- Flip over your pony and find the screws marked in red.
  - Remove these screws with a 3.0 Triangle screw bit. Don't worry about keeping them separated because they are all the same size.
- ⚠ When the screws are removed the head and rear legs should be removable. Be careful to not pull everything apart to much because the head and legs are all connected to the motherboard.

## Step 2



- Remove the wires connecting the head and leg sections. We will disconnect all of the wire connections in this step and they will need to be re-connected at the end, so be careful when disconnecting.
- Now that the wires have been disconnected, the head and back legs should be free to place aside
- Remove the black bar by unscrewing the two triangle screws marked in yellow. These screws are recessed into the black bar so you may need an extender for your triangle bit.

## Step 3



- Take out the two clips keeping the motherboard in place but applying upwards pressure on them.
- Remove the motherboard and replace. The sensors are soldered on to the motherboard so the whole board must be replaced.

To reassemble your device, follow these instructions in reverse order.