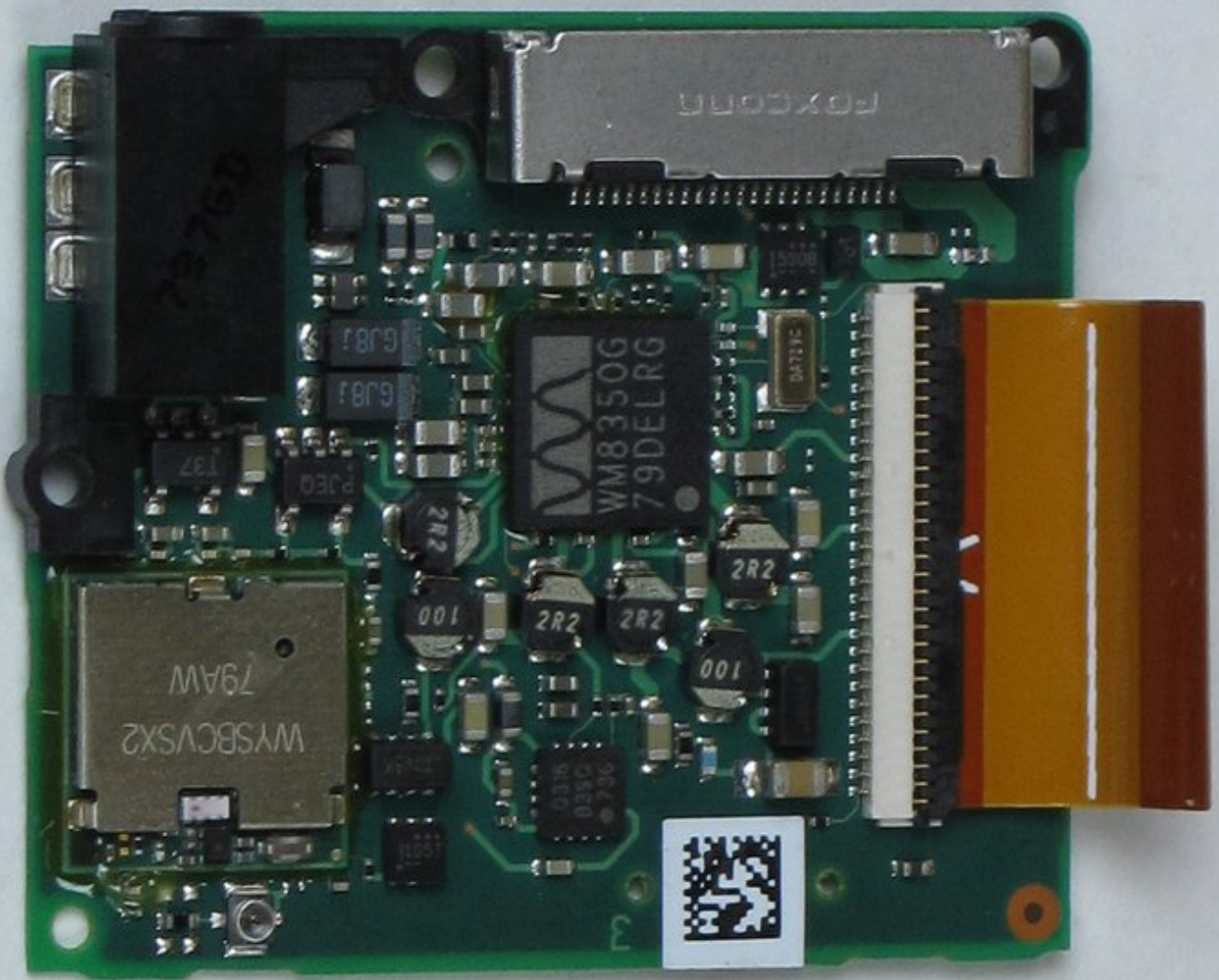




Zune Flash 2nd Generation Communications Board Replacement

Written By: ybahman



INTRODUCTION

Guide for the removal and replacement of the communications board on the Zune Flash media player.

TOOLS:

- [iFixit Opening Tools](#) (1)
 - [Metal Spudger](#) (1)
 - [Tri-wing Screwdriver](#) (1)
-

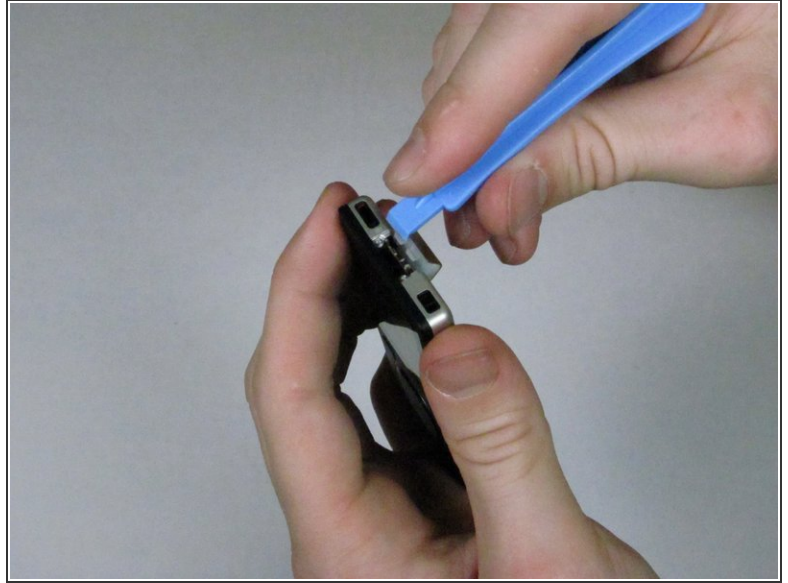
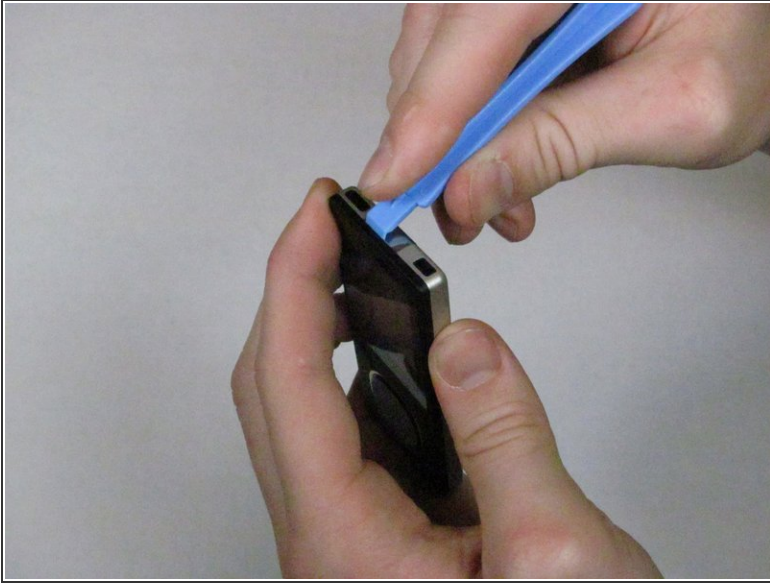
Step 1 — Back Cover



- Prior to disassembly, verify the hold switch is engaged to ensure the device will not turn on during the procedure.
- If the device turns on while it is being disassembled it could cause irreversible damage to the device.

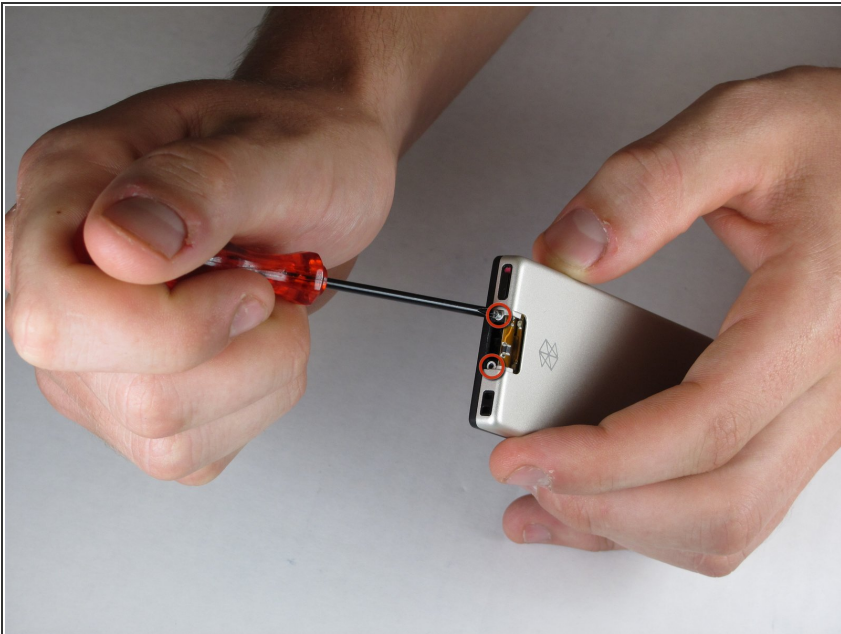
 PICS MAKE NO SENSE.

Step 2



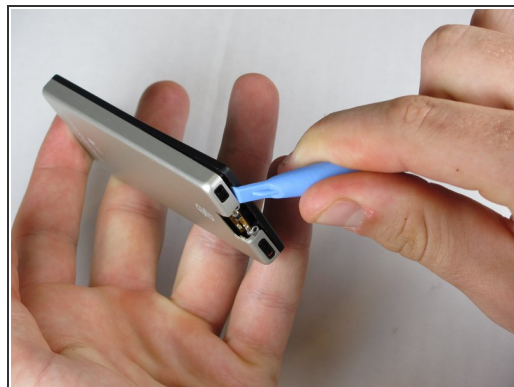
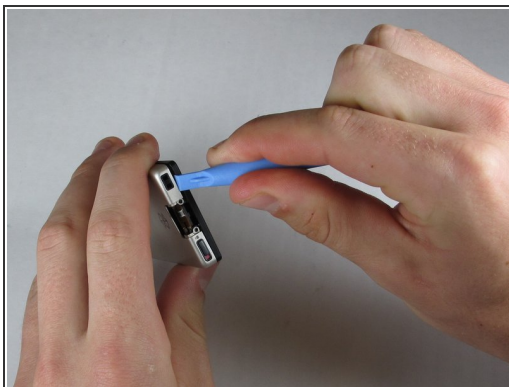
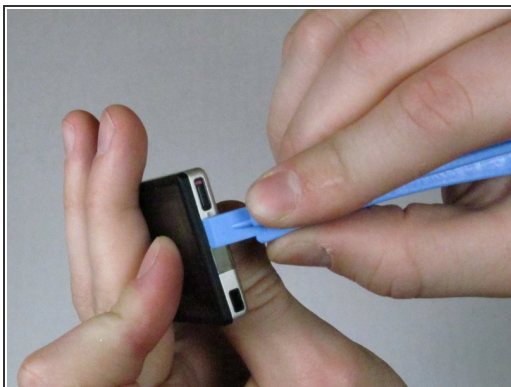
- Remove the top metal clip by inserting a Zune opening tool in between the faceplate and back cover and pulling gently back as shown in the images.
- You should hear a 'click' as the clip detaches from the device.

Step 3



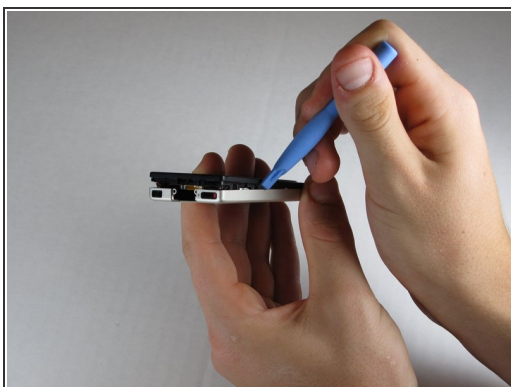
- Remove the two screws shown using a small Tri-Wing screwdriver.
- ⓘ You will need to use a very small Tri-Wing screwdriver to ensure that you do not strip the screws.

Step 4



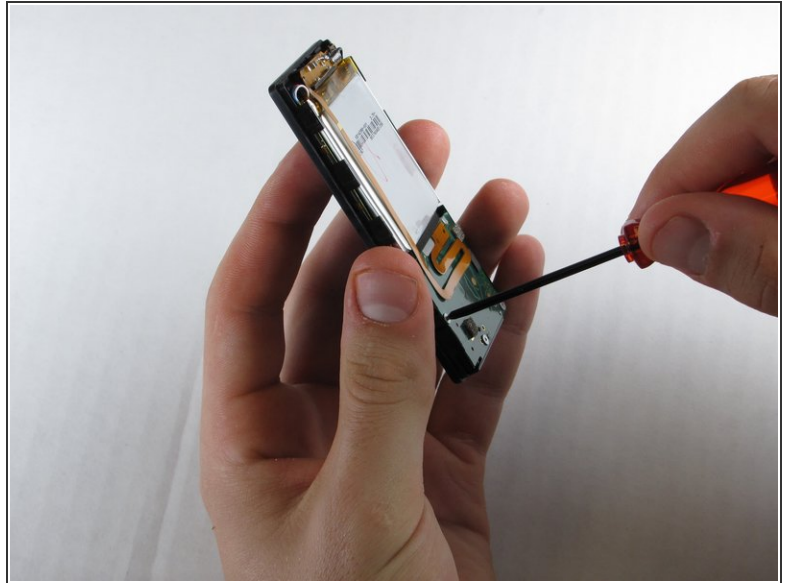
- Insert the Zune opening tool between the faceplate and the back cover, starting from the top and slowly work your way around the device.

Step 5



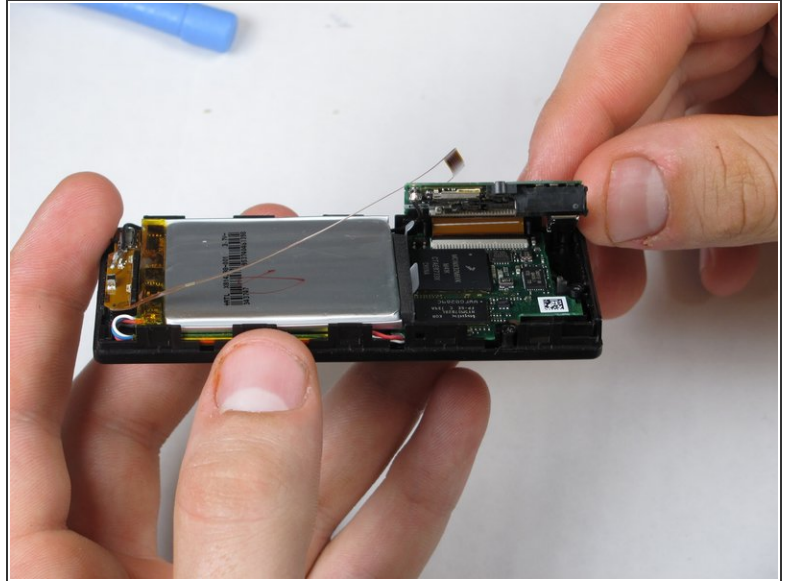
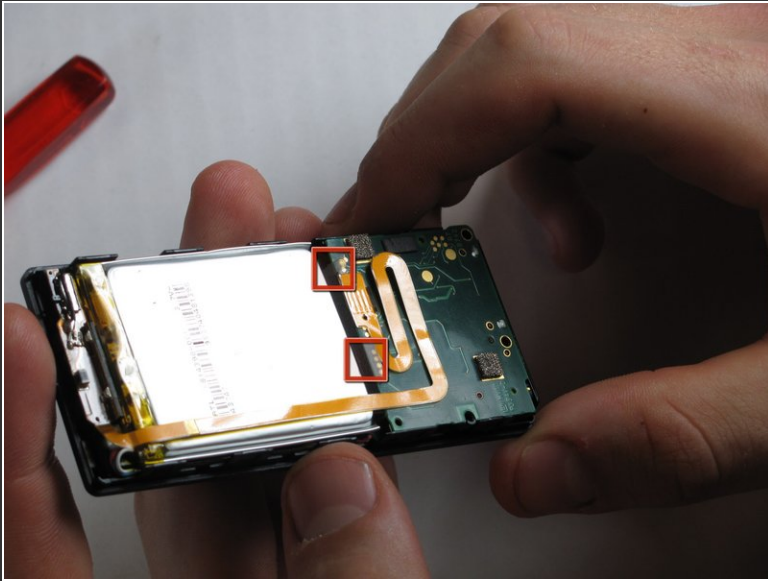
- Work your way around the Zune until the back cover comes free. Remove the back plate and set it aside.

Step 6 — Communications Board



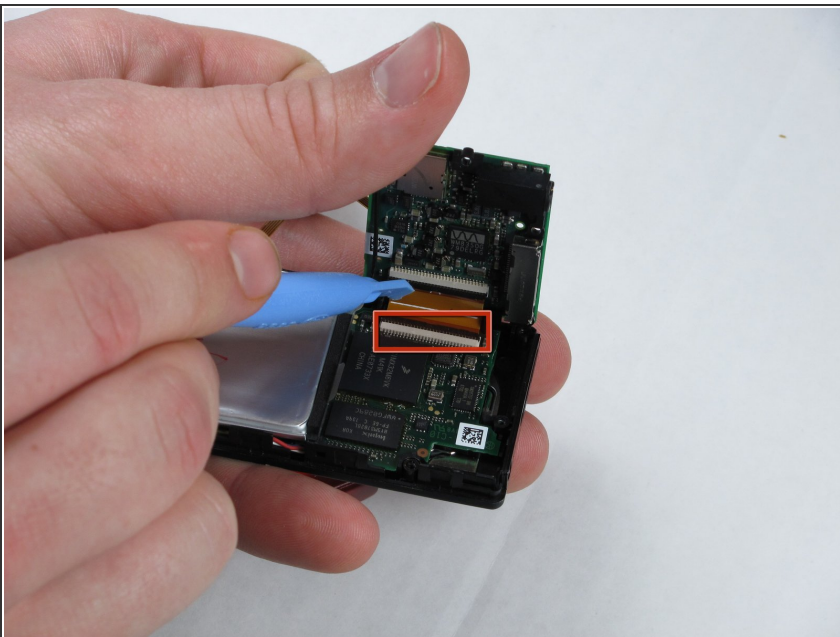
- Remove the three screws (5.5mm by 3mm) from the backside of the Zune using a small Tri-Wing screwdriver.

Step 7



- Use your finger to pry back the two clear flaps.
 - Slowly lift the communications board that was held down by the clear flaps.
- ⚠ Be careful not to accidentally detach the slim ribbon that connects between the communications board and the device.

Step 8



- Disconnect the ribbon cable with the Zune opening tool by flipping up the black plastic flap where the ribbon cable connects to the memory board.
- Pull the ribbon cable out of the memory board.

Step 9



- Peel the slim ribbon cable off the communications board using your fingers.
- ⓘ This slim ribbon is attached using an adhesive, so it cannot be reattached without more adhesive.

Step 10



- Pull the cable connector straight up using your fingers.
- Communications board remains.

To reassemble your device, follow these instructions in reverse order.