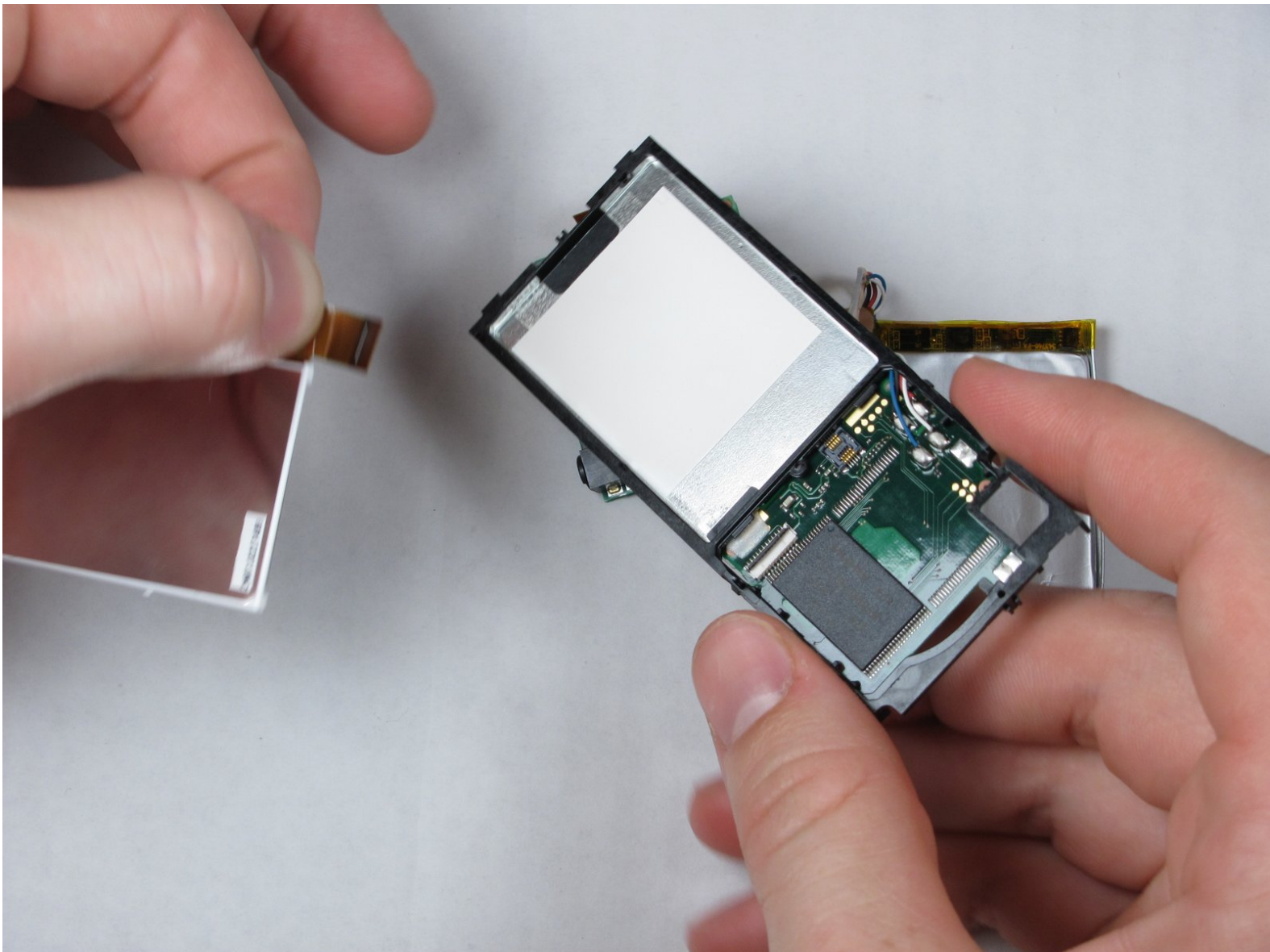




# Zune Flash 2nd Generation LCD Display Replacement

Written By: ybahman



# INTRODUCTION

How to remove and replace the Zune Flash 2nd Generation LCD Display.




## TOOLS:

- [iFixit Opening Tools](#) (1)
  - [Metal Spudger](#) (1)
  - [Tri-wing Screwdriver](#) (1)
-

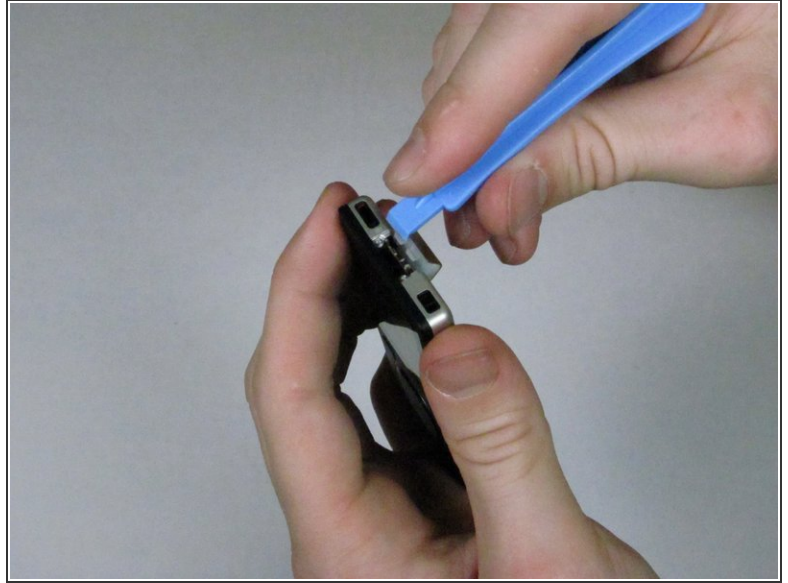
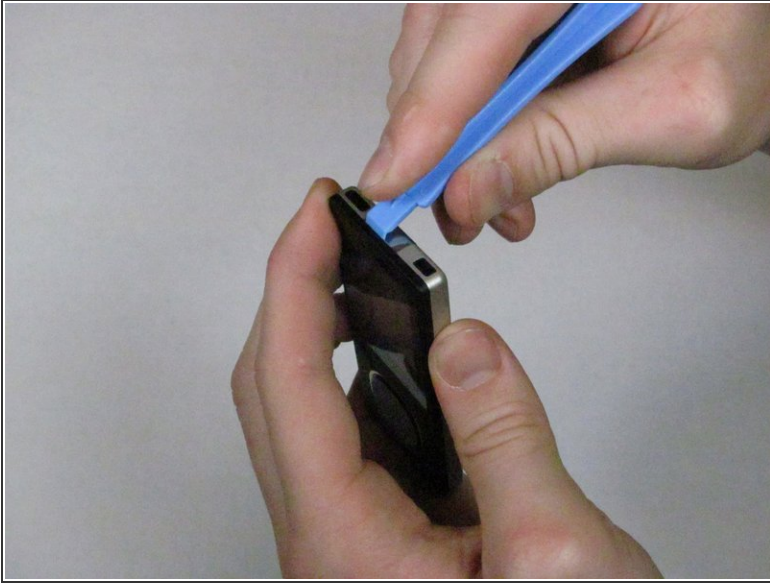
## Step 1 — Back Cover



- Prior to disassembly, verify the hold switch is engaged to ensure the device will not turn on during the procedure.
  - If the device turns on while it is being disassembled it could cause irreversible damage to the device.
-  PICS MAKE NO SENSE.

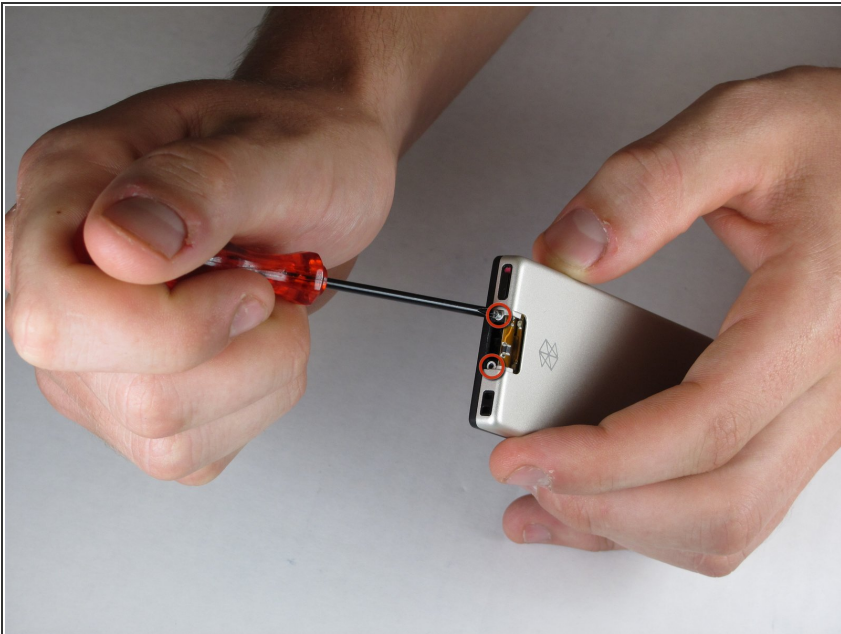


## Step 2



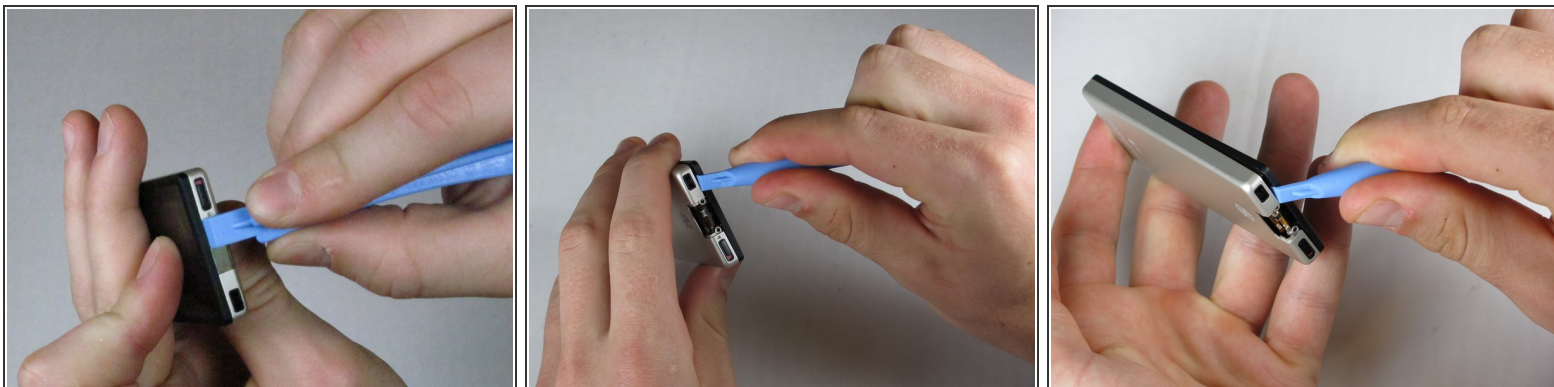
- Remove the top metal clip by inserting a Zune opening tool in between the faceplate and back cover and pulling gently back as shown in the images.
- You should hear a 'click' as the clip detaches from the device.

## Step 3



- Remove the two screws shown using a small Tri-Wing screwdriver.
- ⓘ You will need to use a very small Tri-Wing screwdriver to ensure that you do not strip the screws.

## Step 4



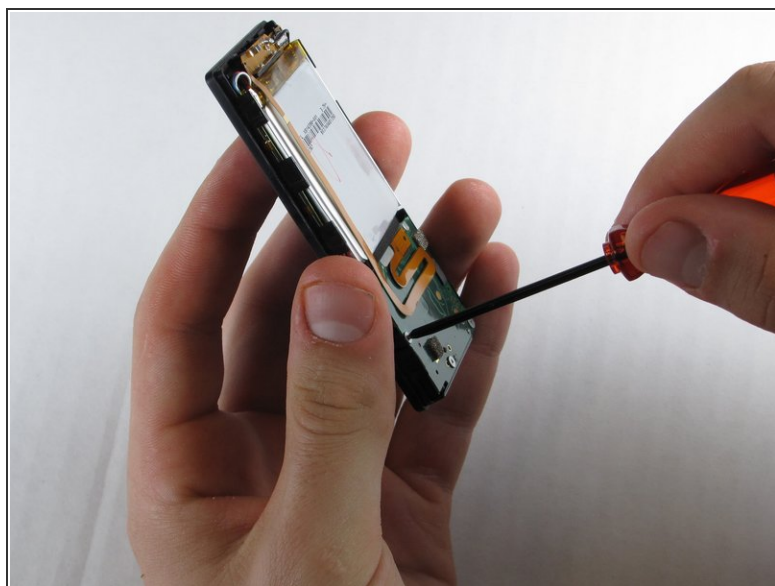
- Insert the Zune opening tool between the faceplate and the back cover, starting from the top and slowly work your way around the device.

## Step 5



- Work your way around the Zune until the back cover comes free. Remove the back plate and set it aside.

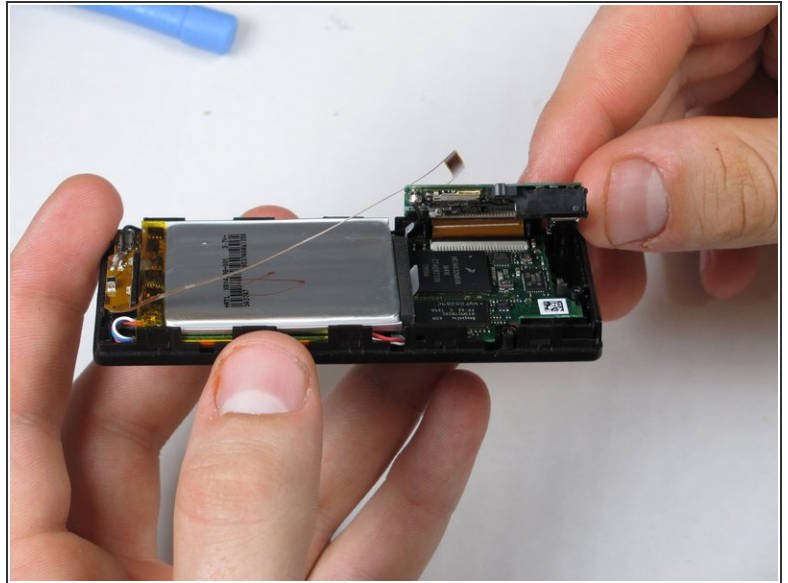
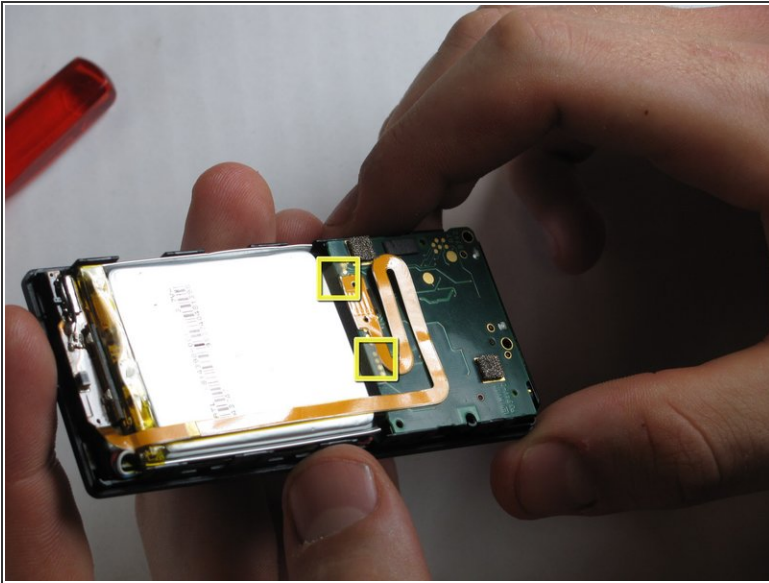
## Step 6 — Face Plate



- Remove the three screws (5.5mm by 3mm) from the backside of the Zune using a small Tri-Wing screwdriver.
- Be sure to put this set of screws aside since they are a different size than any other screws in the device.

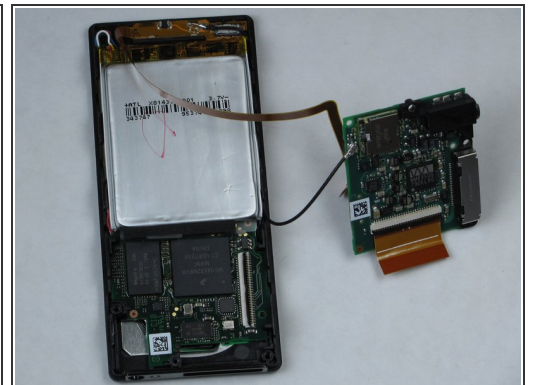
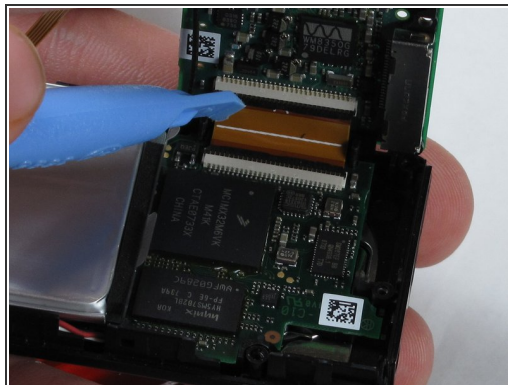
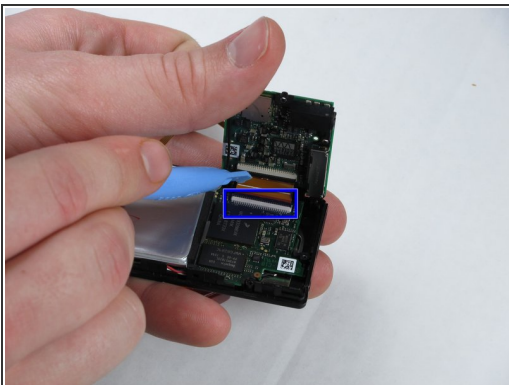


## Step 7



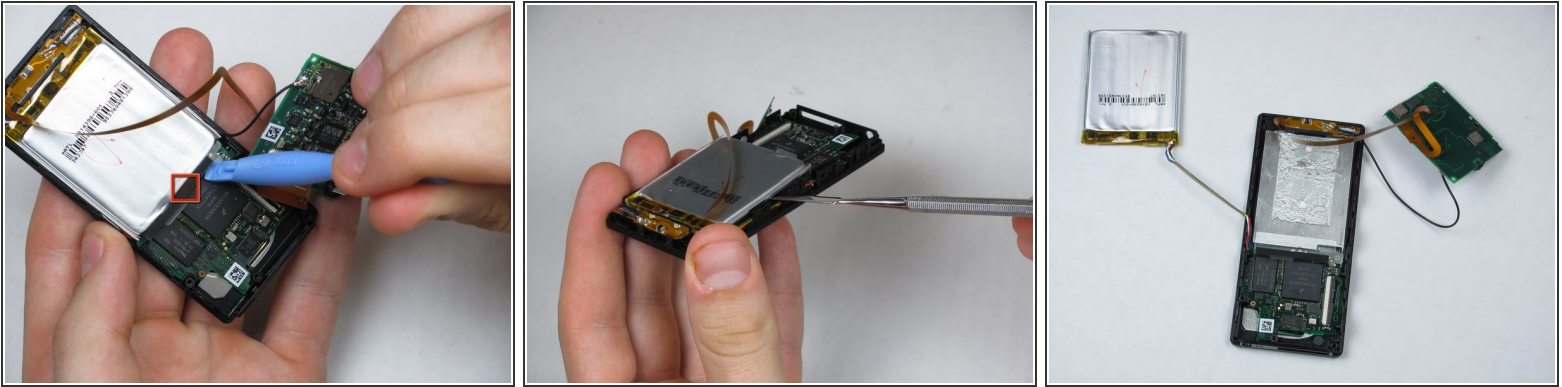
- Use your finger or a Zune opening tool to pry back the two clear flaps.
  - Next lift the communications board that was being held down by the clear flaps.
- ⚠ Be careful not to accidentally detach the slim ribbon that connects between the communications board and the device.

## Step 8



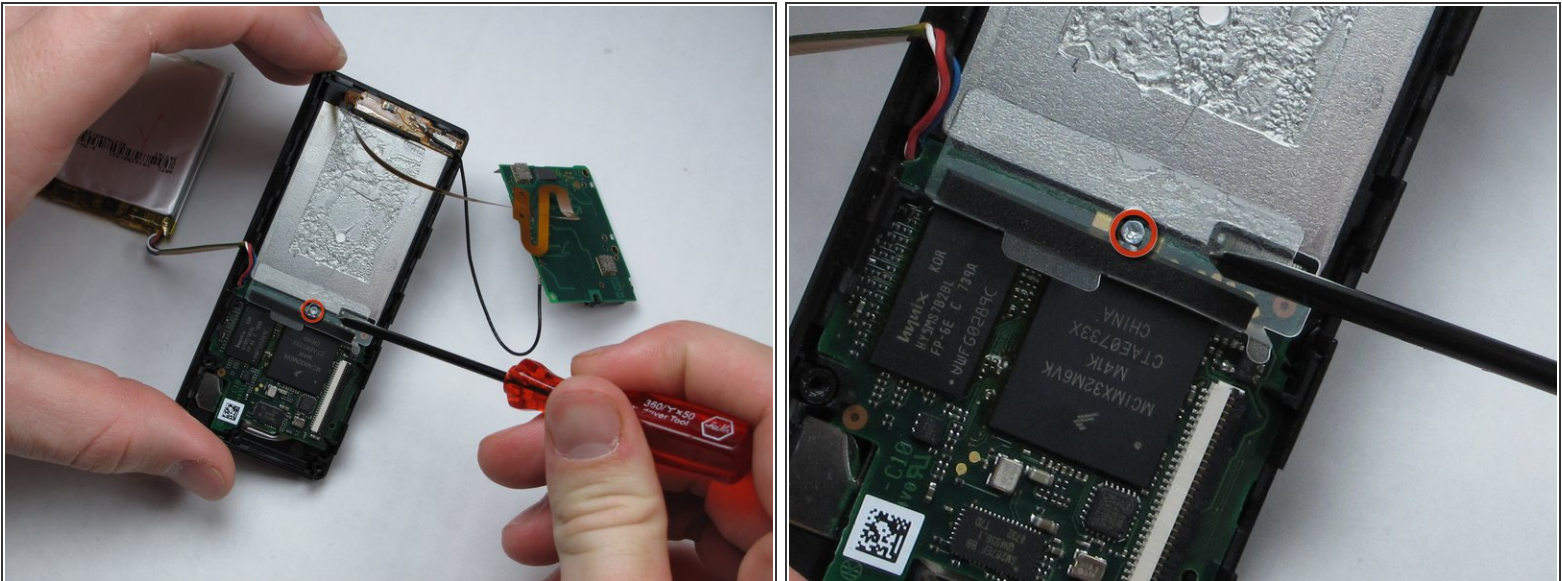
- Disconnect the ribbon with the plastic opening tool by flipping up the black plastic flap where the ribbon connects to the memory board.
- Carefully pull the ribbon out of the memory board, ensuring that the black plastic flap is up before removal to avoid the ripping the ribbon.

## Step 9



- Remove the battery by prying the battery off from the bottom with a Zune opening tool.
- ⓘ There is an adhesive between the battery and the device, therefore use a metal spudger to finish detaching the battery.
- ⚠ Be sure not to puncture the battery in any way when using the metal spudger.

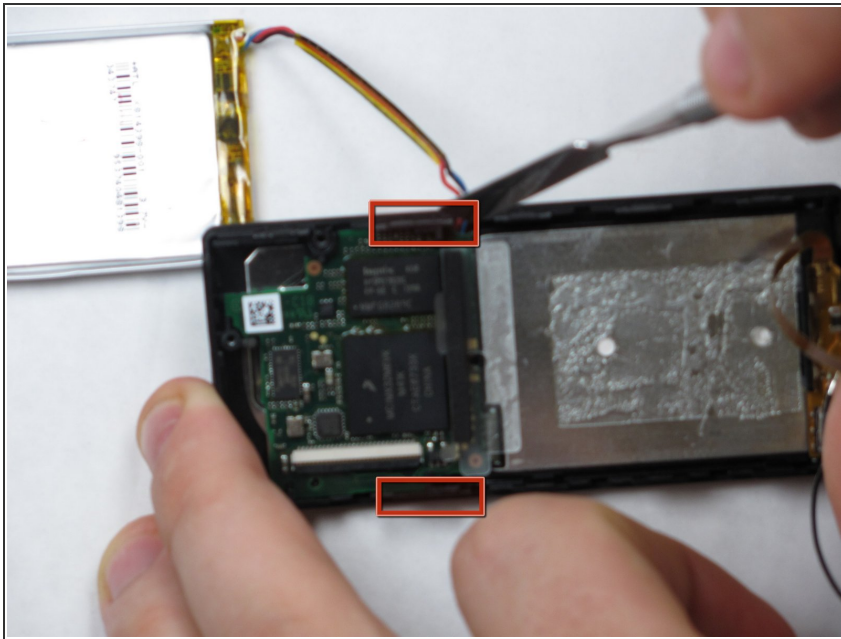
## Step 10



- Remove the single screw under the battery using a small Tri-Wing screwdriver.

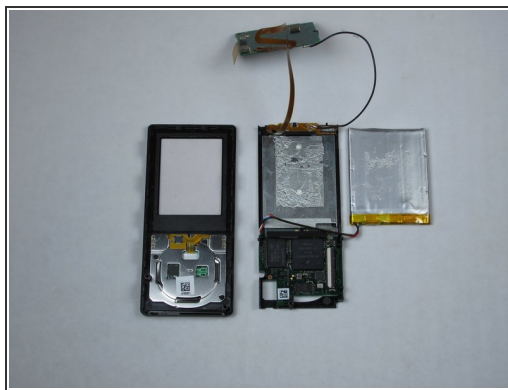
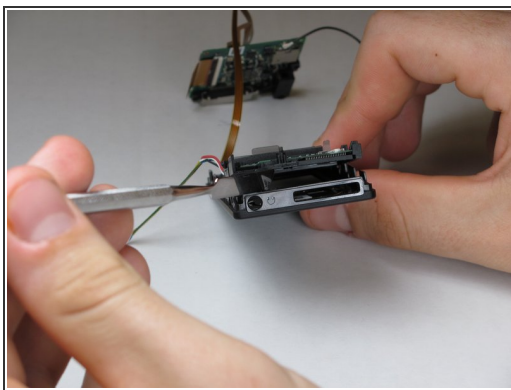


## Step 11



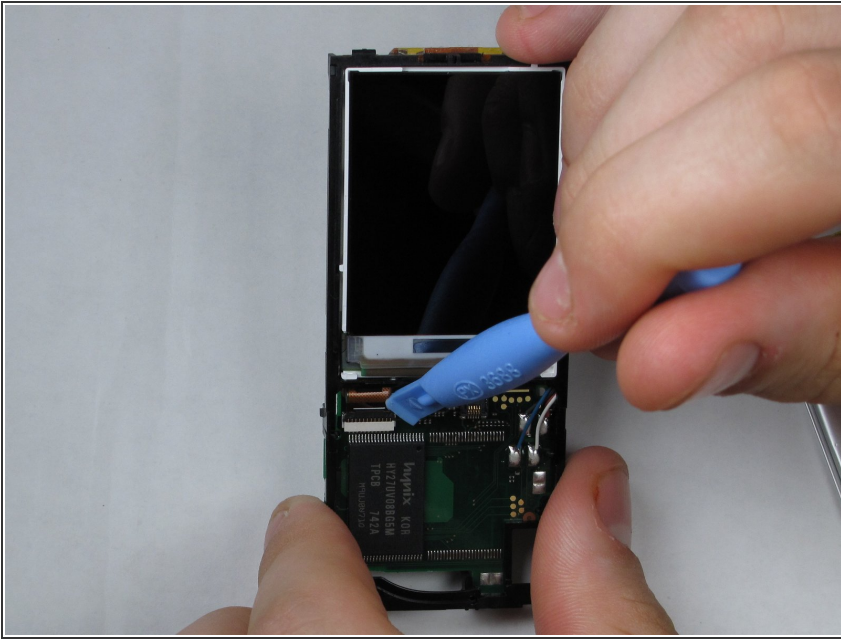
- Disconnect the faceplate from the device by depressing the two tabs located near the middle of each of the sides using a metal spudger.
- This will disconnect the last circuit board in the device from the center frame.

## Step 12



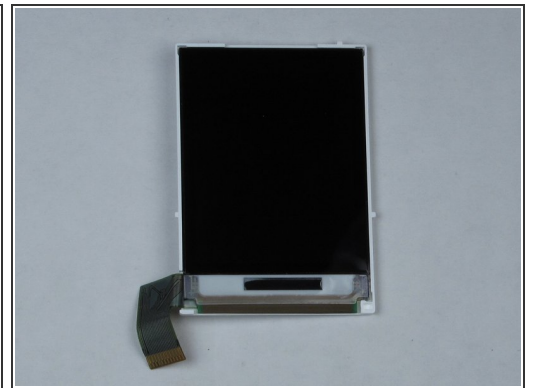
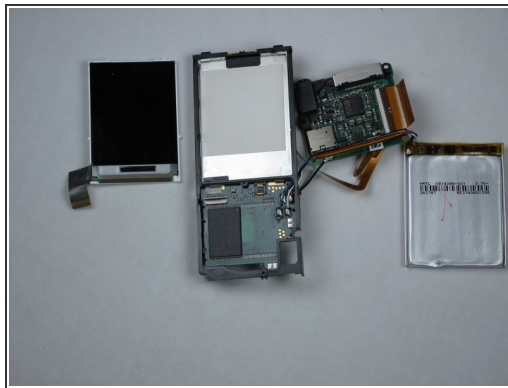
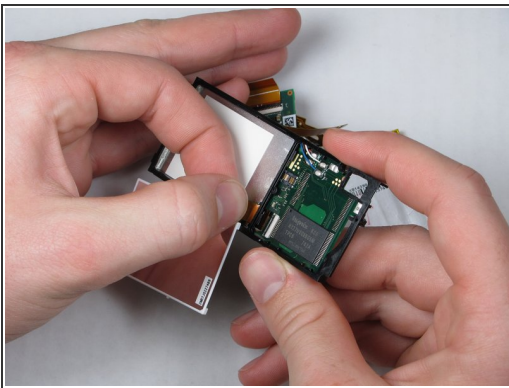
- Remove the faceplate by using a metal spudger to separate it from the remaining components.

## Step 13 — LCD Display



- Release the LCD connector ribbon by flipping up the black switch. This will disconnect the LCD from the device.
- At this point the LCD screen should be easily separable from the device.

## Step 14



- Remove the LCD by carefully pulling directly on the ribbon.
- Pull slowly to ensure that the ribbon isn't damaged upon removal.

To reassemble your device, follow these instructions in reverse order.