



bObi Pet Bumper Replacement

The following instructions will show you how to open bObi Pet and remove the whole front bumper for replacement.

Written By: Chelsea



INTRODUCTION

This guide involves opening bObi Pet and separating the whole front bumper using a Phillips head screwdriver and a replacement bumper for bObi Pet.



TOOLS:

- [Phillips #2 Screwdriver](#) (1)



PARTS:

- [bObi Pet Front Bumper](#) (1)

Step 1 — Turn bObi Pet Off



- Before we get started, turn bObi Pet OFF and flip her over onto a flat surface.
- Next, remove bObi Pet's dustbin. Grip the small tab on the back of the bin, and pull to remove.

Step 2 — Remove the Front Wheel



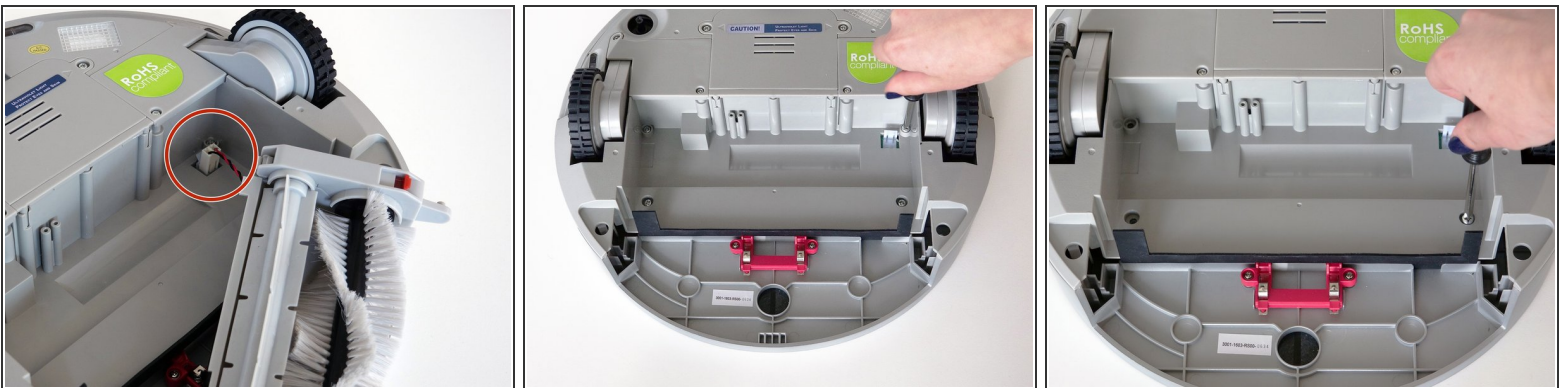
- Grip the front wheel and pull straight up, using the screwdriver for leverage.
 - The wheel will pop out and you will see two screws beneath it.
 - There is a larger screw set deeper in the wheel compartment. Use the screwdriver to remove it.
- ☒ Remember to keep all screws and parts removed from bObi Pet safely aside during the repair. They may be needed for re-assembly.

Step 3 — Remove the Dustbin's Holders



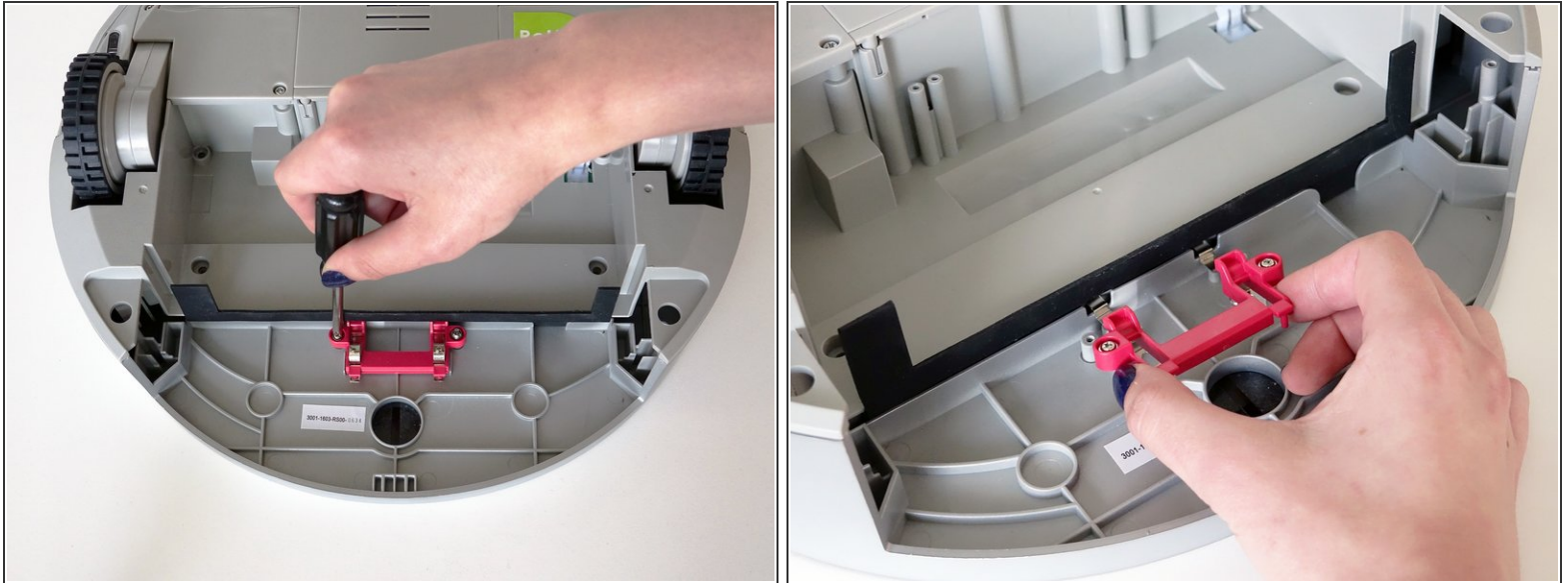
- Remove the screws on both sides of bObi Pet's dustbin. Then, remove the corner pieces that were held down by the screws.
- Grip the brush compartment and pull down to reveal two screws on a red fastener.
- Remove them with the screwdriver.

Step 4 — Remove the Main Brush Attachment



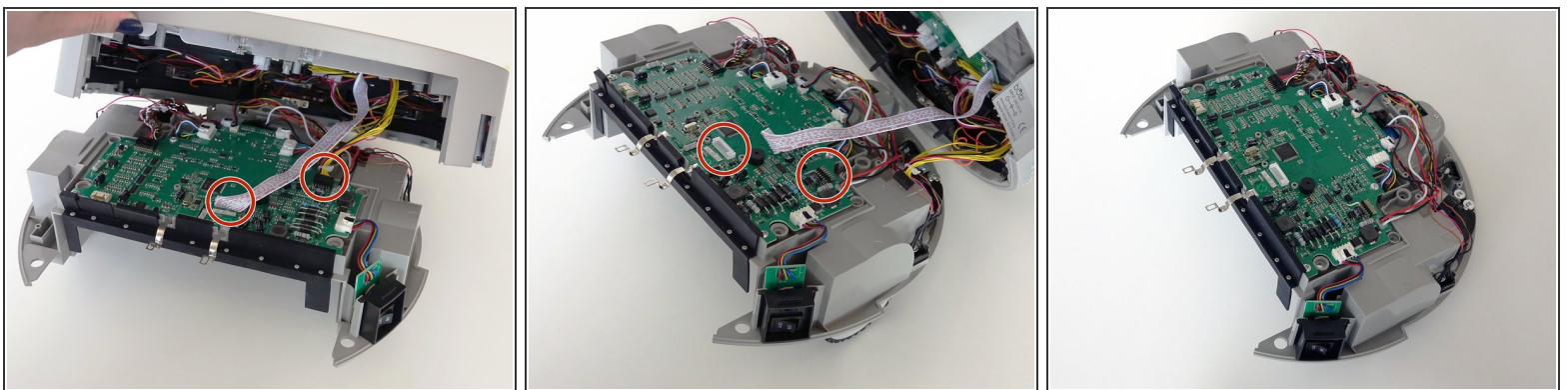
- Pull the brush compartment up until the fastener is freed from bObi Pet. Then, detach the brush compartment's circuit plug and set it aside.
- Remove the 4 screws located beneath the brush compartment.

Step 5 — Remove the Cover Screws



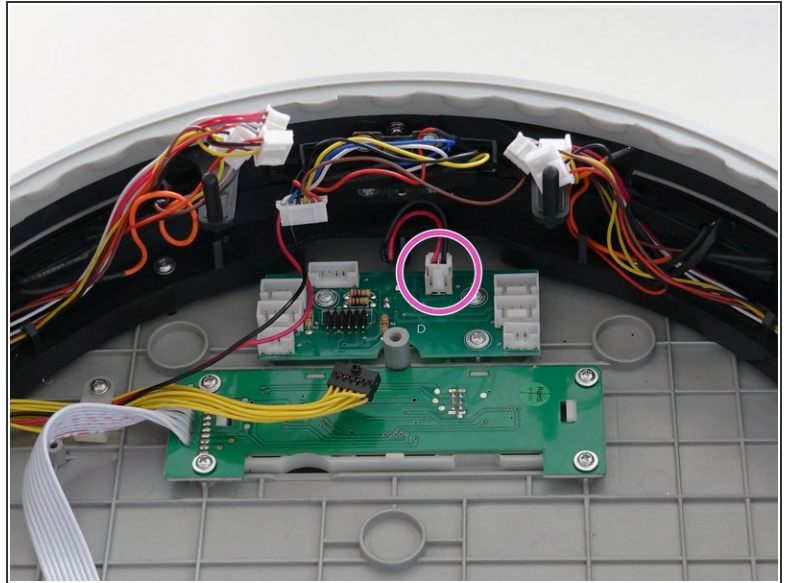
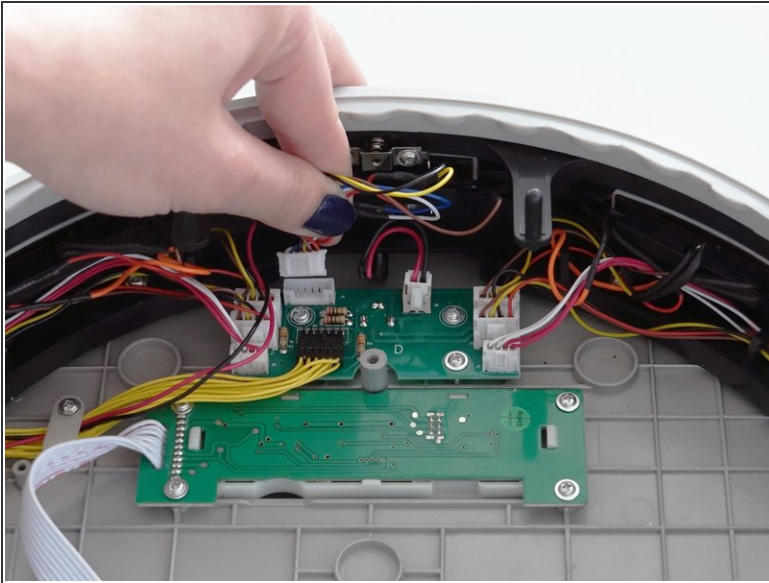
- Remove the 2 screws on the dustbin's red fastener.
- Remove the fastener and set it aside for reassembly.
- The cover is no longer secured, so carefully flip bObi Pet onto her wheels.

Step 6 — Detach the Cover



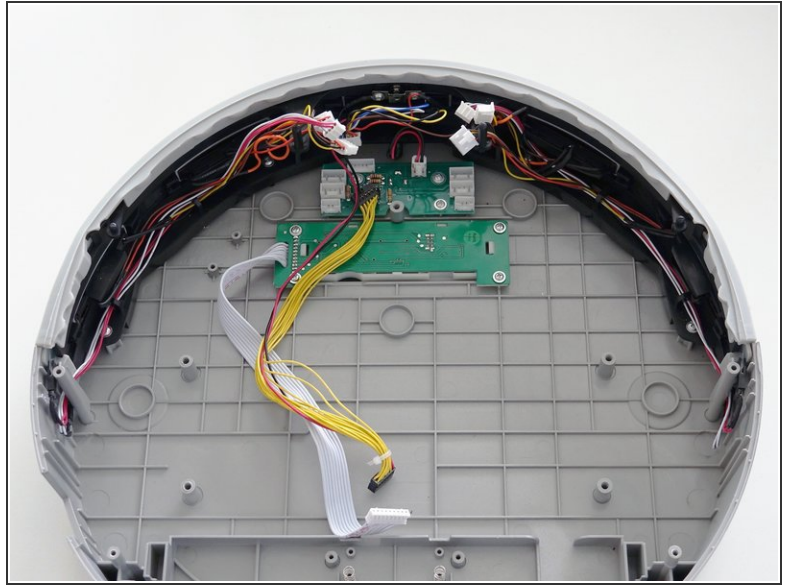
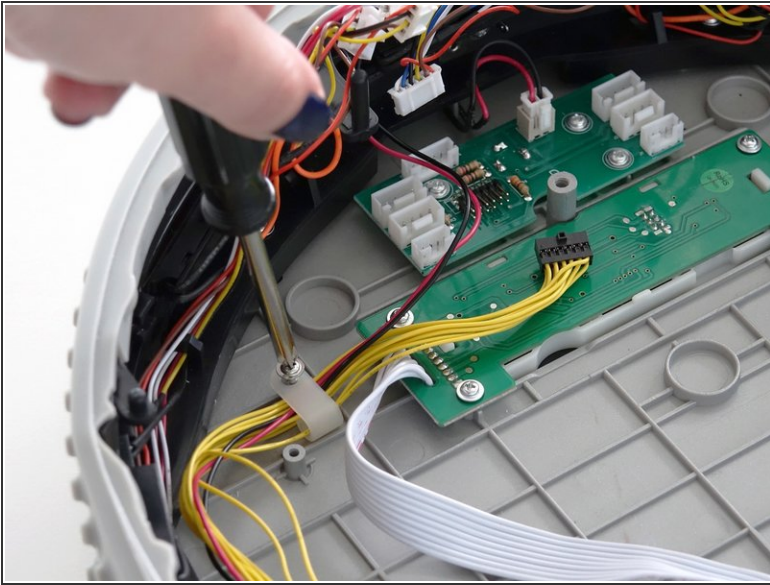
- Lift the cover to reveal the main board underneath.
- Remove the two circuit plugs connecting the lid to the mainboard.
- bObi Pet's cover is entirely separated, and you may now access any of her internal parts for replacement.

Step 7 — Remove the Circuit Plugs



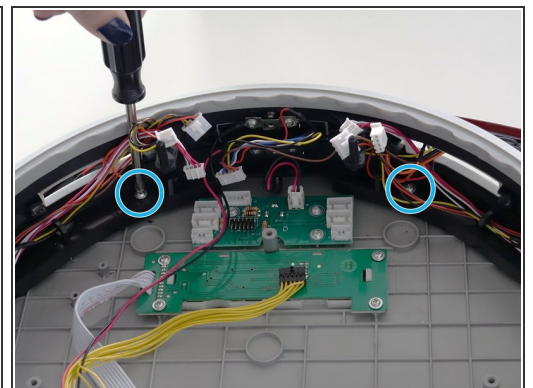
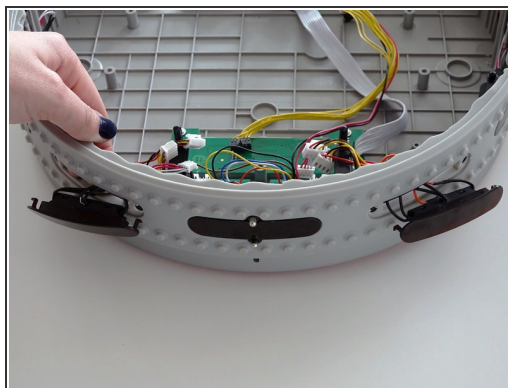
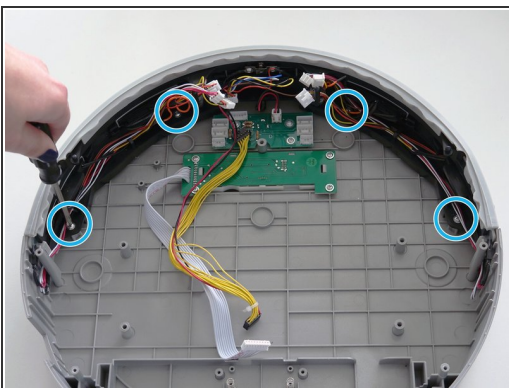
- Flip bObi Pet's cover over onto a flat surface so that you see 2 green circuit boards positioned at the top.
- There are 8 circuit plugs that you will need to remove. Leave the smallest circuit plug at the top in place, and do not remove it.
- ☞ If there is any glue holding down the other wires, you may scrape it off using a tool such as a screwdriver.

Step 8 — Remove the Wire's Hook



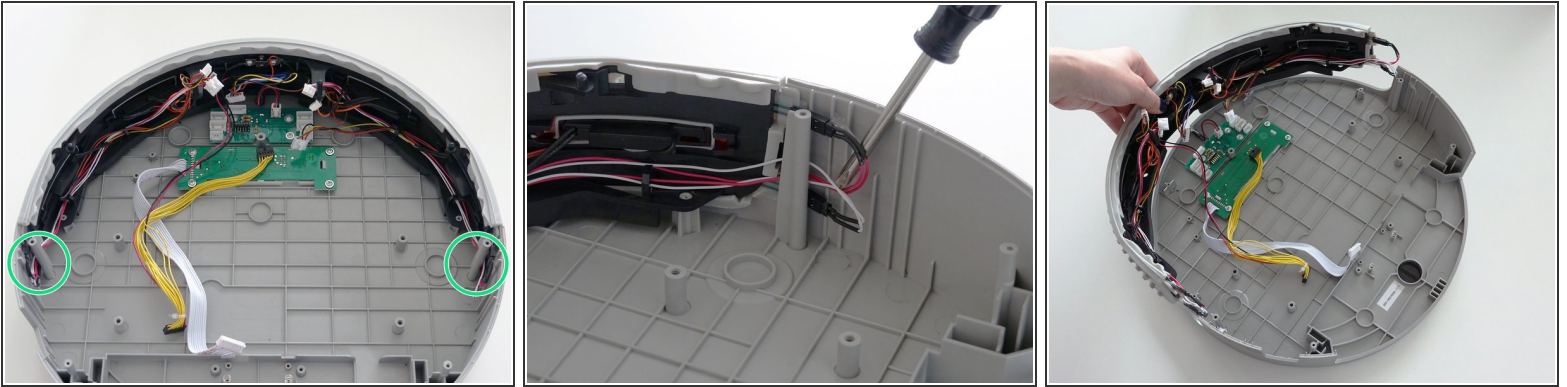
- Remove the hook holding the yellow circuit plug against the lid. Keep the small hook and all screws safely aside for later reassembly.
- ⓘ Depending on your model, bObi Pet may have one of two hooks holding the yellow wire. In this case, remove and keep both aside for reassembly.

Step 9 — Uninstall the Bumper Screw



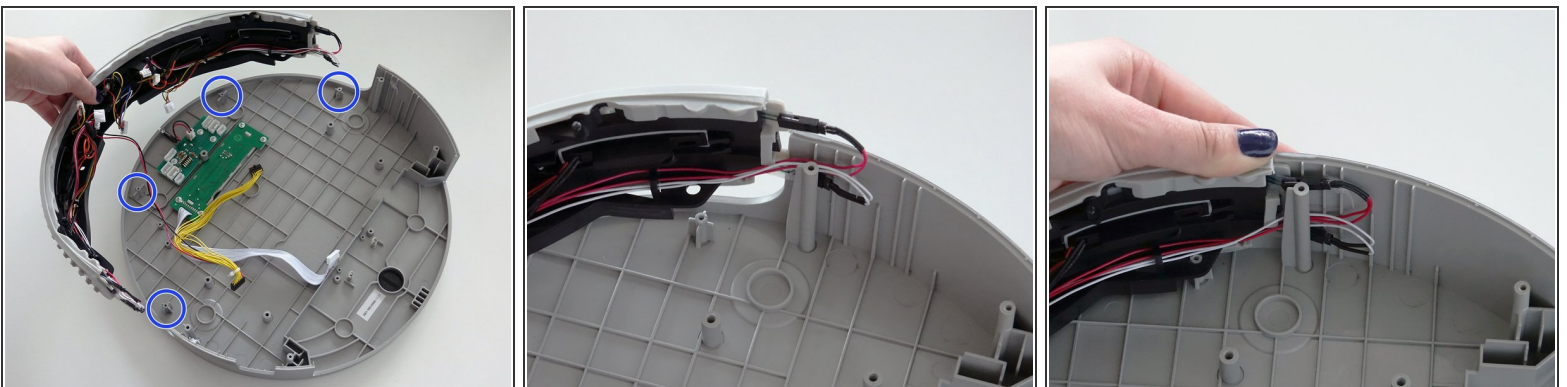
- Next, remove the 4 screws connecting the bumper to bObi Pet's lid.
- You may nudge two of the oblong wall sensors out of their spot on bObi Pet to make room for your screwdriver. Be sure to replace them when done.

Step 10 — Lift the Bumper Out



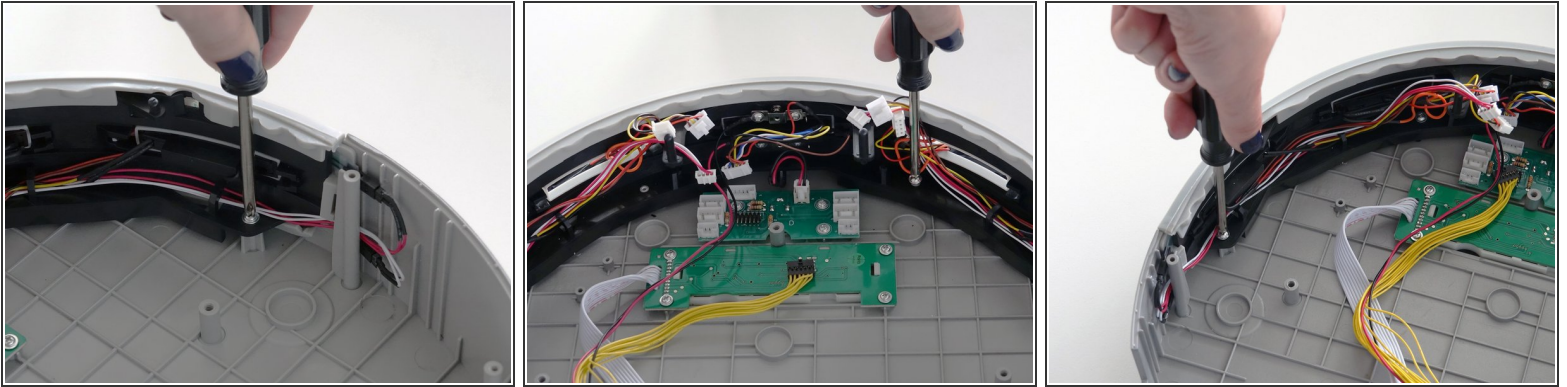
- On the left and right sides of the bumper are bObi Pet's sensor strips. They connect to the circuit board by red and white wires.
- The sensor strips may be glued to the inside of the cover. Use a tool like a screwdriver to break off the glue.
- Then, lift the whole bumper up and out.

Step 11 — Place the New Bumper



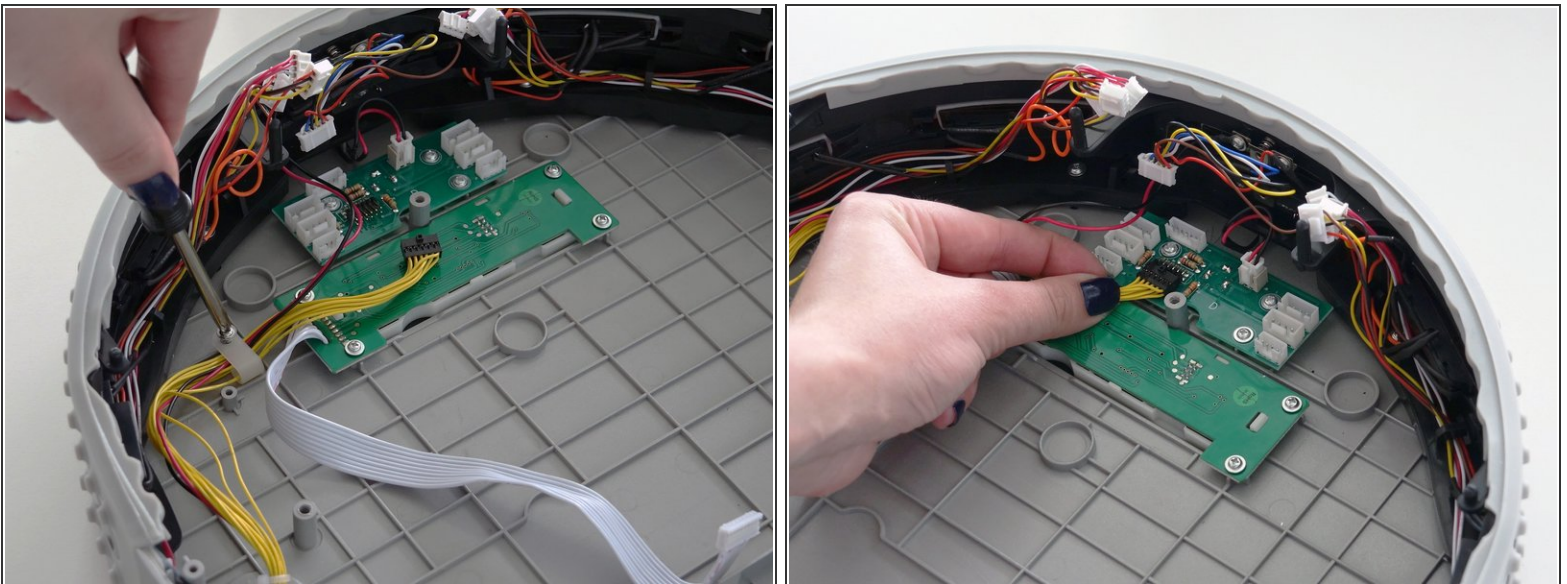
- Now line up bObi Pet's new bumper with the corresponding screw posts on her lid.
- Make sure the sensor strips slide in behind the screw posts on both ends of the bumper.

Step 12 — Secure the New Bumper



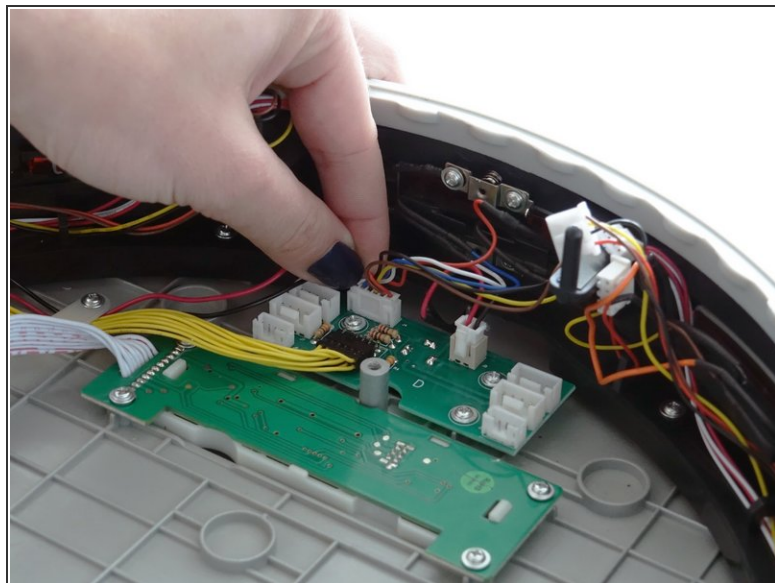
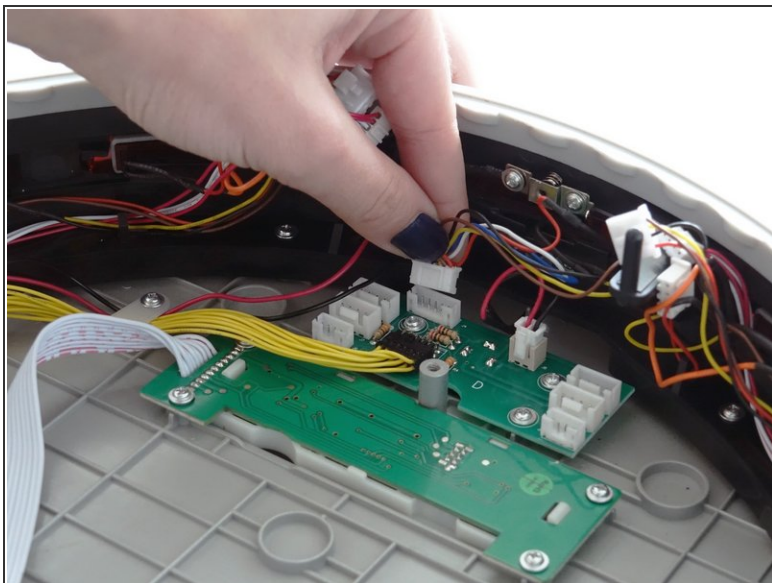
- Once the bumper is positioned securely on the lid, reinstall the 4 screws around the inside of the bumper.
- Once again, you may nudge 2 of the oblong wall sensors out to allow room for your screwdriver and then replace them when done.

Step 13 — Secure the Wires



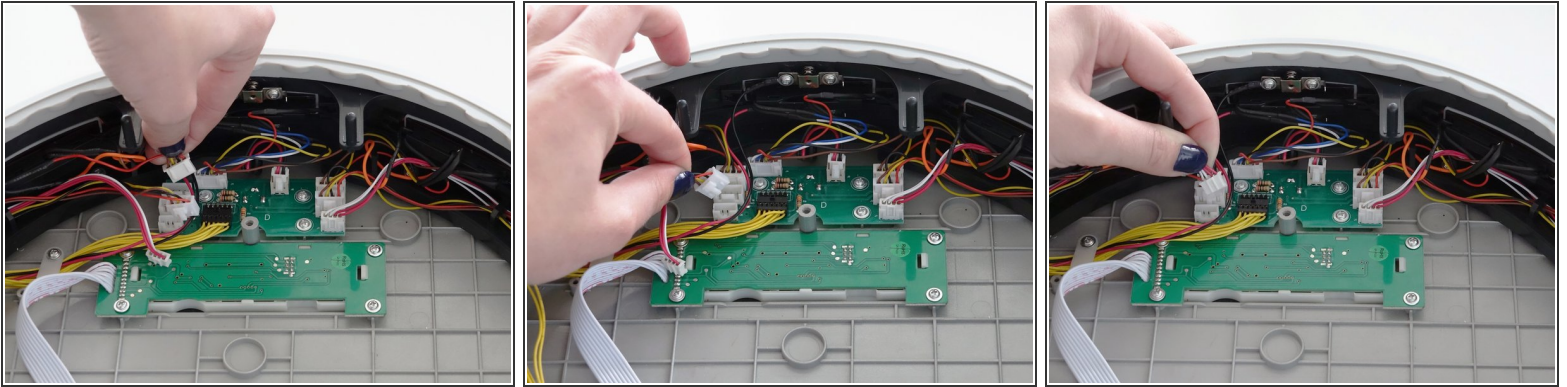
- Next, you'll need to replace the plastic hook removed previously. Place the yellow wire through it, and line the hook up with the screw post on the cover.
- When aligned, install the screw on the hook.
- Then, attach the thick yellow wire to the lower edge of the circuit board.

Step 14 — Start Connecting All Circuit Plugs



- Continue reconnecting all circuit plugs.
- In the middle of bObi Pet's bumper is a circuit plug for one of the 5 wall sensors. Plug this one in at the topmost spot.

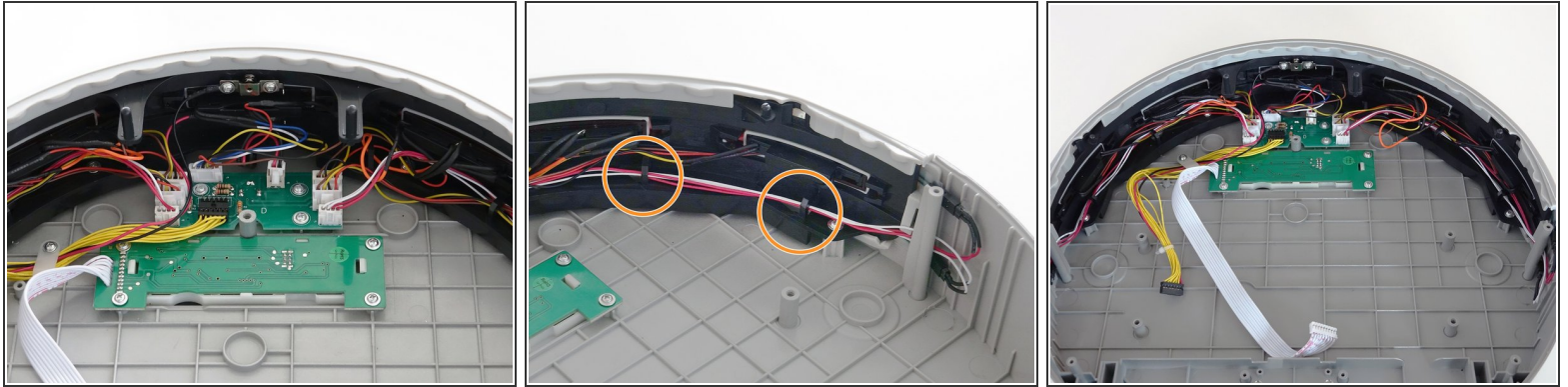
Step 15 — Finish Connecting All Circuit Plugs



i The rows on each side of the cover circuit board follow the same pattern for installation.

- The left side of the circuit board has 3 spaces: The top space corresponds to the wall sensor with the shortest wire and no tab on the circuit plug.
- Just below that is where the leftmost wall sensor plugs in. It has a longer wire and a small white tab on its circuit plug.
- The space on the very bottom is for bObi Pet's sensor strips. They have red and white wires.

Step 16 — Double Check Wires and Connections



- Repeat the previous process for the circuit plugs on the right and double check that all connections are secure.
- Make sure the the red and white wires are tucked behind the screw posts at the ends of the bumper.
- Make sure all the wires are tucked behind the black hooks lining the inside of the bumper before closing bObi Pet.
- For assistance on reassembly, see: [Assemble bObi Pet Post-Repair](#)

To reassemble your device, follow the guide for closing bObi Pet: [Assemble bObi Pet Post-Repair](#)