



bObi Pet Left or Right Wheel Replacement

This quick and easy tutorial will help you remove and replace the left or right wheel on a bObi Pet Robotic Vacuum and Mop.

Written By: Chelsea



INTRODUCTION

This guide demonstrates the replacement of bObi Pet's right wheel, but is applicable for replacing either the left or right wheel on bObi Pet.

There is a similar the video guide found here: <https://www.youtube.com/watch?v=iKn9qxmM...>



TOOLS:

- [Phillips #2 Screwdriver](#) (1)



PARTS:

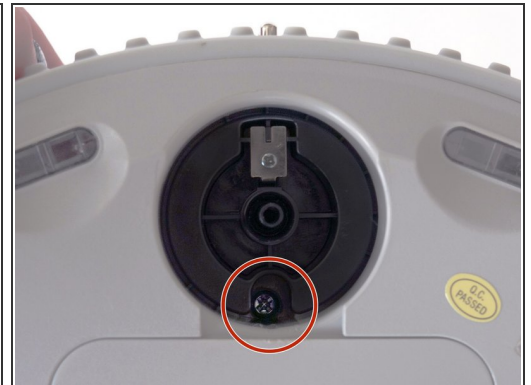
- [bObi Pet Wheel](#) (1)

Step 1 — Turn bObi Pet's Power Off



- Before we get started, turn bObi Pet OFF and flip her over onto a flat surface.
- Next, remove the dustbin. Grip the button on the back of the bin and pull to remove.

Step 2 — Remove the Front Wheel



- Then, remove bObi Pet's front wheel. Grip the wheel with your hand and pull straight up, using the screwdriver for leverage.
- Behind the wheel are two screws. Use the screwdriver to remove the larger screw set deeper in the wheel compartment.
- Keep the wheel, its screw, and all other screws removed from bObi Pet for later reassembly.

Step 3 — Remove the Dustbin Holders



- For the next step, remove the screws on both sides of the dustbin.
- Then, remove the corner pieces that were held down by the screws.
- Grip the brush compartment and pull down to reveal two screws on a red fastener. Remove them with the screwdriver.

Step 4 — Detach the Main Brushes



- Pull the brush compartment up until it is freed from the red fastener. Then, detach the brush compartment and set it aside.

Step 5 — Uninstall the Cover Screws



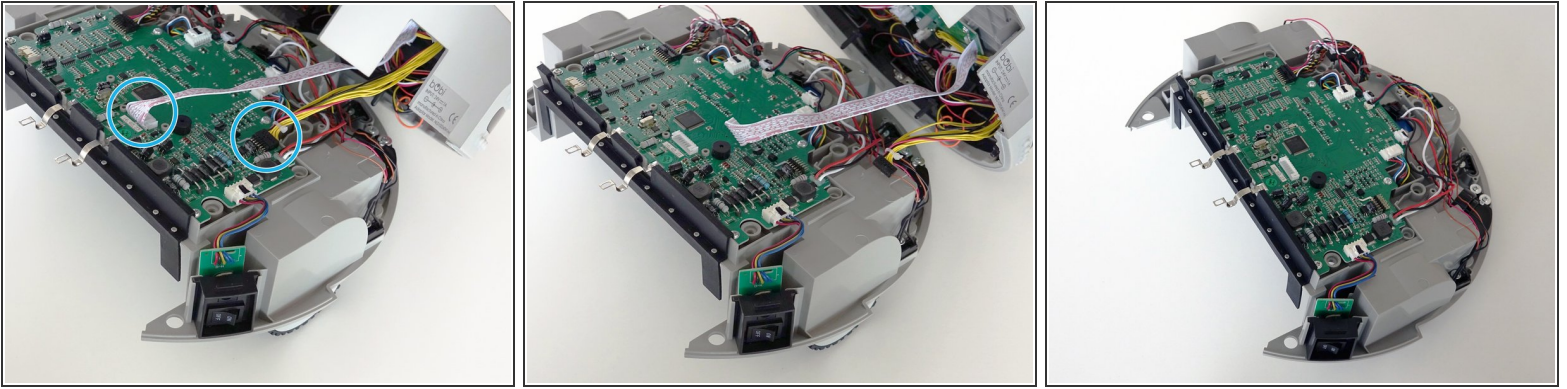
- Remove the 4 screws located beneath the brush compartment.
- Next, remove the 2 screws on the dustbin's red fastener.
- Remove the fastener and set it aside for reassembly.

Step 6 — Uninstall the Wheel's Screws



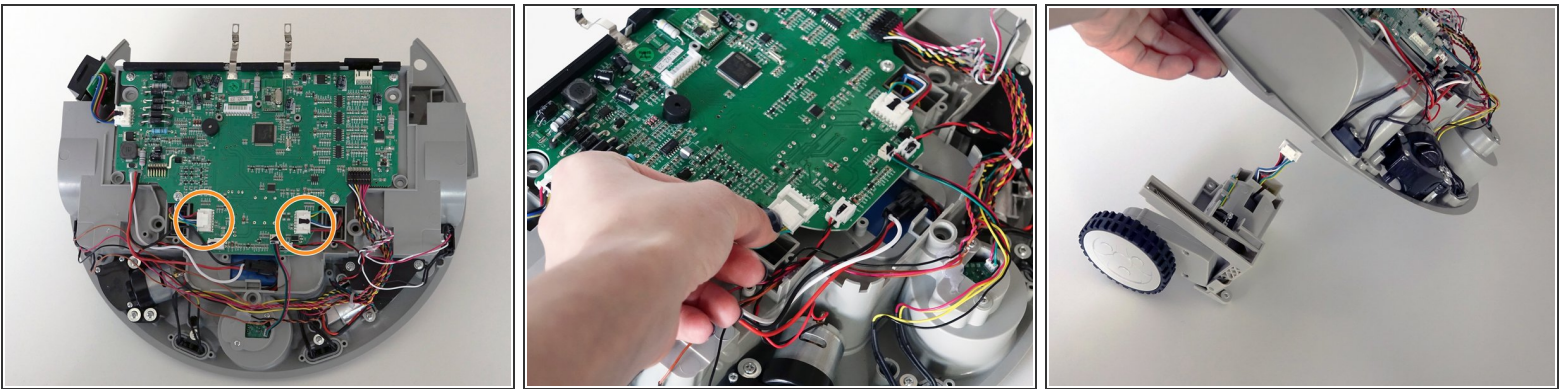
- Remove the two screws holding the wheel you'd like to replace. In this case, bObi Pet's right wheel is being replaced.

Step 7 — Disconnect the Cover



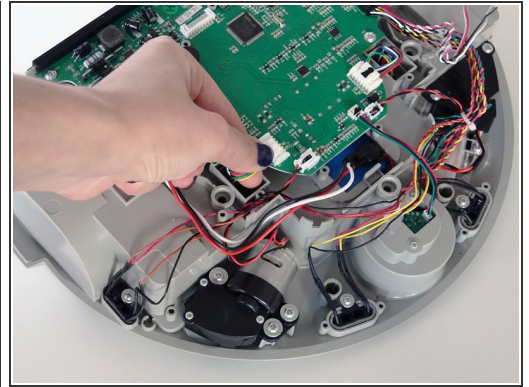
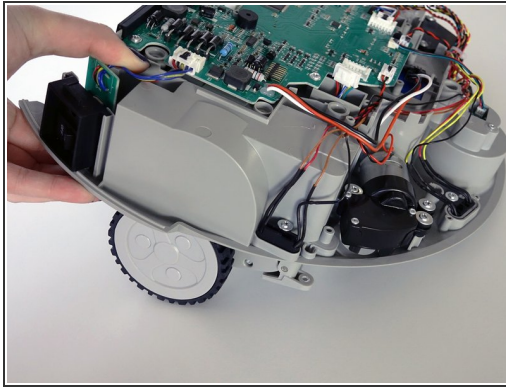
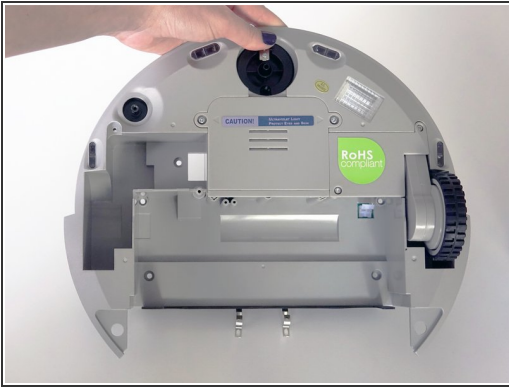
- The cover is no longer secured, so carefully flip Bobi Pet onto her wheels.
- Lift the cover to reveal the main board underneath. Remove the two circuit plugs connecting the lid to the mainboard.

Step 8 — Disconnect the Wheel



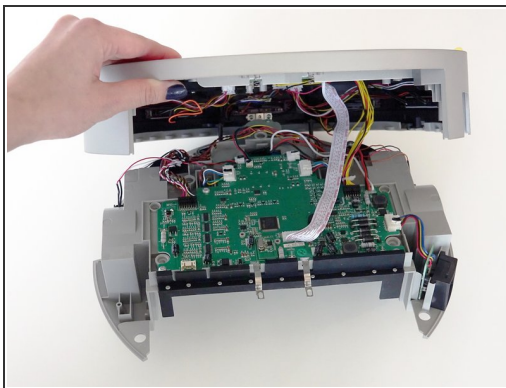
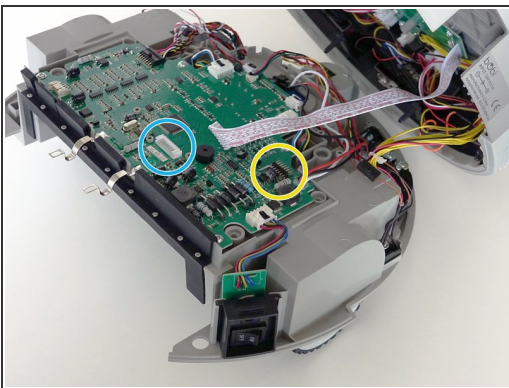
- The wheels are attached to the top of the mainboard.
- Unplug the wheel you wish to replace. If there is glue holding the circuit plug in place, you may scrape it off using your screwdriver.
- Lift bObi Pet and feed the wheel's wires through the opening in her cover. The wheel will detach from underneath.

Step 9 — Place the New Wheel



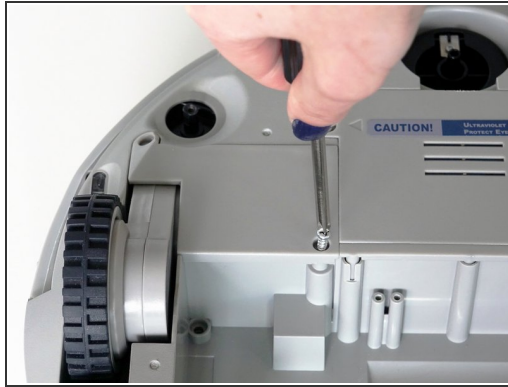
- Place your new wheel in the open space underneath bObi Pet.
- Ensure the circuit plug goes through the opening on bObi Pet and reaches the main board.
- Plug your new wheel into the mainboard. You may add glue or electrical tape to the new wheel's circuit plug for a more secure hold.

Step 10 — Attach the Cover



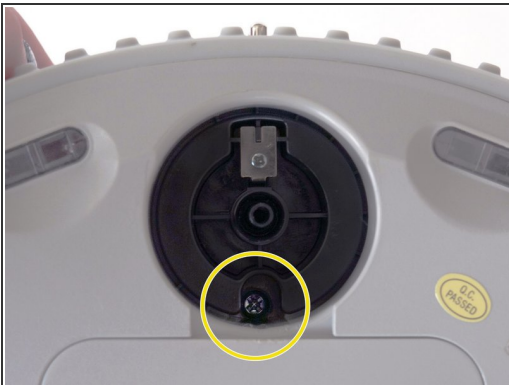
- Attach the two circuit plugs from bObi Pet's cover back onto her main board.
- The yellow-wired plug connects to the right side of the mainboard.
- The white-wired plug on bObi Pet's lid connects to the middle of the mainboard.
- Lay down the cover and line up the edges precisely.

Step 11 — Replace the Wheel's Screws



- While holding bObi Pet's top and bottom together, carefully flip her over onto a flat surface.
- Then reinstall the 2 screws on the wheel you've just replaced.

Step 12 — Install the Front Wheel



- Next, reinstall the front wheel's screw.
- Place the front wheel on top and firmly push down to secure it.

Step 13 — Replace the Cover Screws



- Replace the dustbin's red fastener and install its 2 screws.
- Next, install the 4 screws in the space beneath the brush compartment.

Step 14 — Connect the Main Brush Attachment



- Plug in the brush compartment.
- Then, replace its red brush fastener and install the 2 screws.
- Position the brush compartment back in its original place.

Step 15 — Replace bObi Pet's Bin



- Reinsert the corner pieces on both sides of the dustbin, with the arms of the brush attachment linked.
- Make sure the rubber strip is not stuck under the brush compartment before you reinstall the 2 screws in each of the corner pieces.
- Make sure the bin can slide in easily before using bObi Pet again, and you've finished the repair.

Congratulations on completing bObi Pet's left or right wheel repair and happy cleaning!