



# bObi Pet Main Brush Motor Replacement

In just a few minutes, you can remove bObi Pet's main brush motor and replace it. All you need is a Phillips head screwdriver and a few minutes.

Written By: Chelsea



## INTRODUCTION

This guide allows you to repair bObi Pet's main brush motor yourself, and can help if the remote is showing an error 002.

You may also follow the video guide found here: <https://www.youtube.com/watch?v=NUWf0k5y...>



### TOOLS:

- [Phillips #1 Screwdriver](#) (1)



### PARTS:

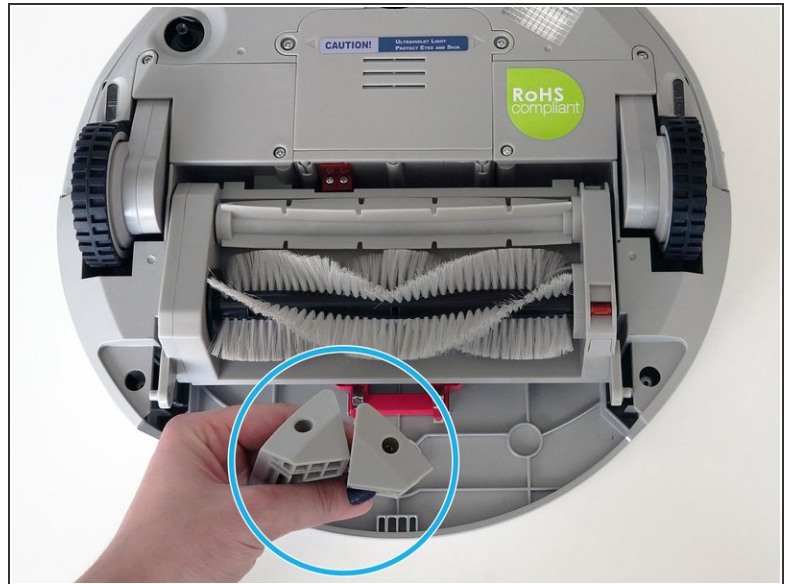
- [bObi Pet Main Brush Motor](#) (1)

## Step 1 — Turn bObi Pet Off



- Before we get started, turn bObi Pet OFF and flip her over onto a flat surface.
- Next, remove the dustbin.

## Step 2 — Remove the Dustbin Holders



- For the next step, remove the screws on both sides of the dustbin.
  - Then, remove the corner pieces that were held down by the screws.
- ☑ Remember to keep all screws and parts removed from bObi as they may be needed for reassembly.

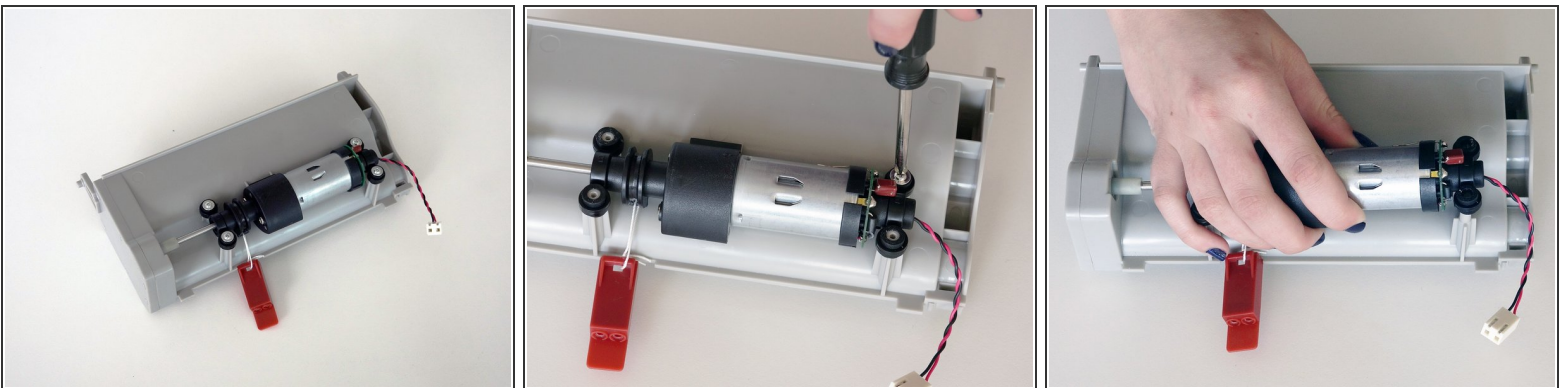


### Step 3 — Remove the Brush Compartment



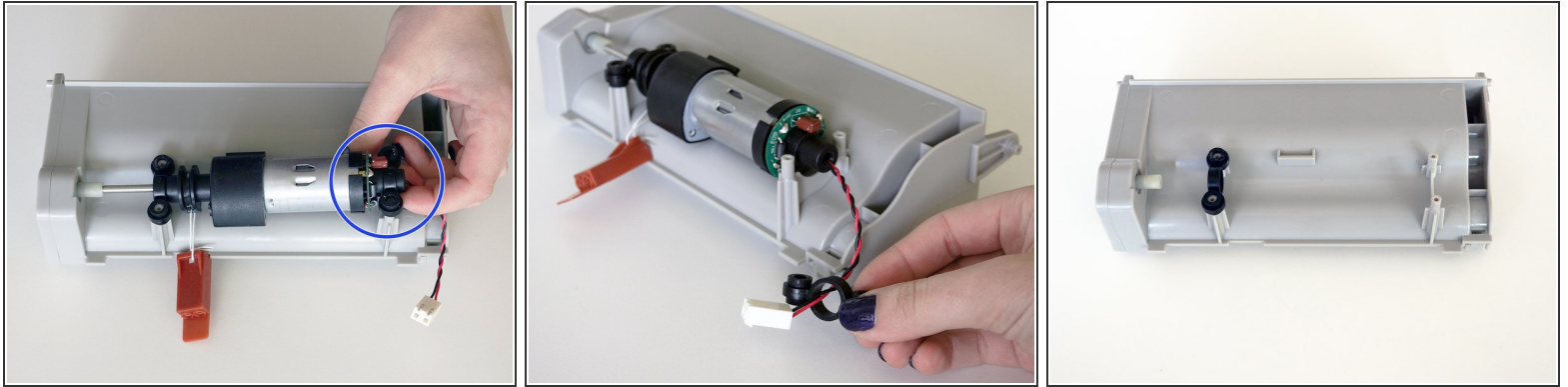
- Grip the brush compartment and pull down to reveal two screws on a red fastener. Remove them with the screwdriver.
- Pull the brush compartment up until it is freed from the red fastener.
- Then, detach the brush compartment and set it aside.

### Step 4 — Detach the motor



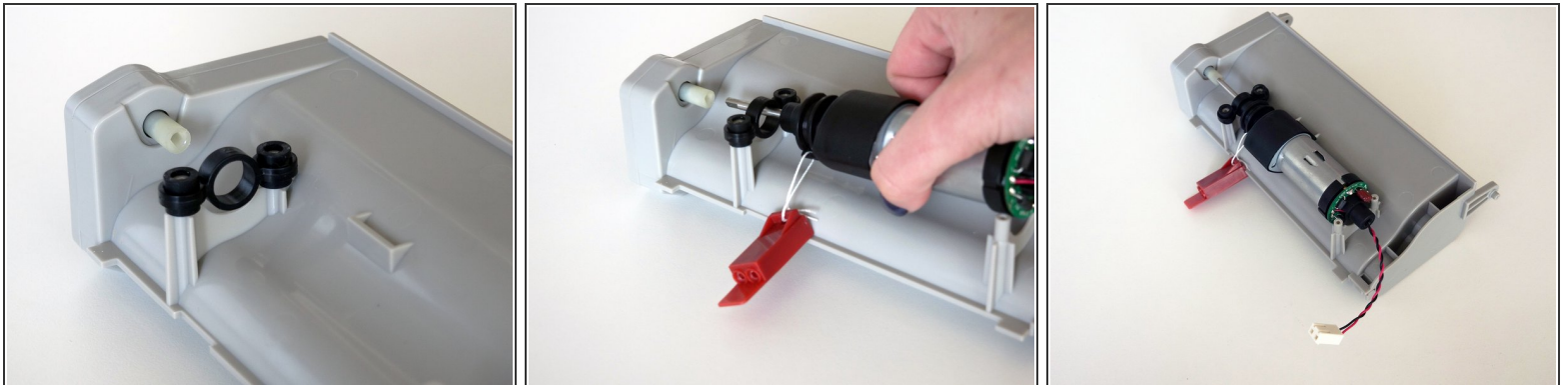
- The main brush motor is located on the bottom of the brush compartment, the side opposite the main brushes.
- Remove the 4 screws which secure it.
- Then lift the motor up.

## Step 5 — Remove the Motor's Stabilizers



- Remove the black stabilizer attached to the motor's circuit plug end.
- Then slide the motor out.
- Now you're ready to install bObi Pet's new motor.

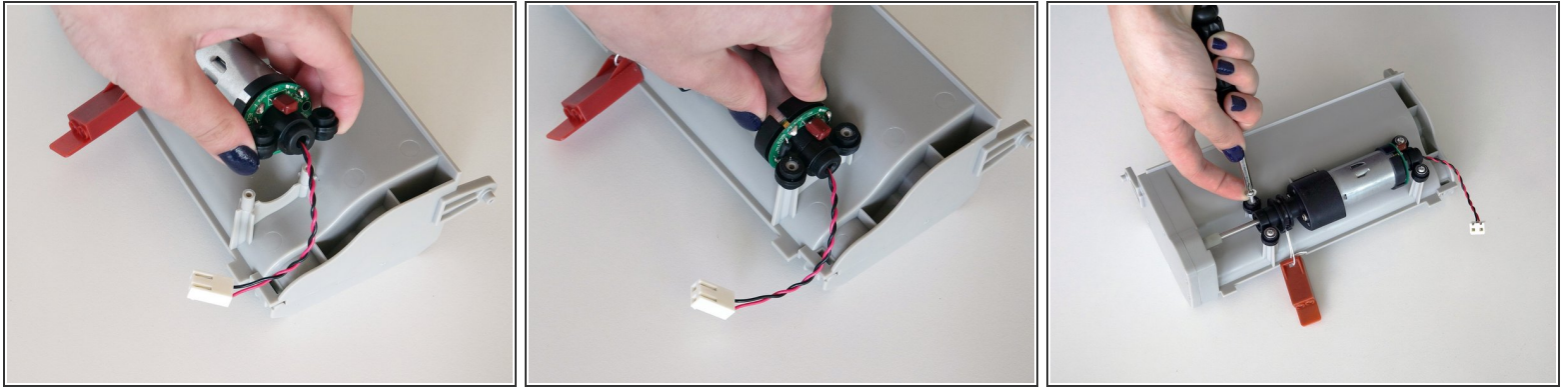
## Step 6 — Place the New Motor



- Slide the long metal end in through the first stabilizer.
- The metal end should line up with a small holder on the brush compartment.



## Step 7 — Replace the Stabilizers



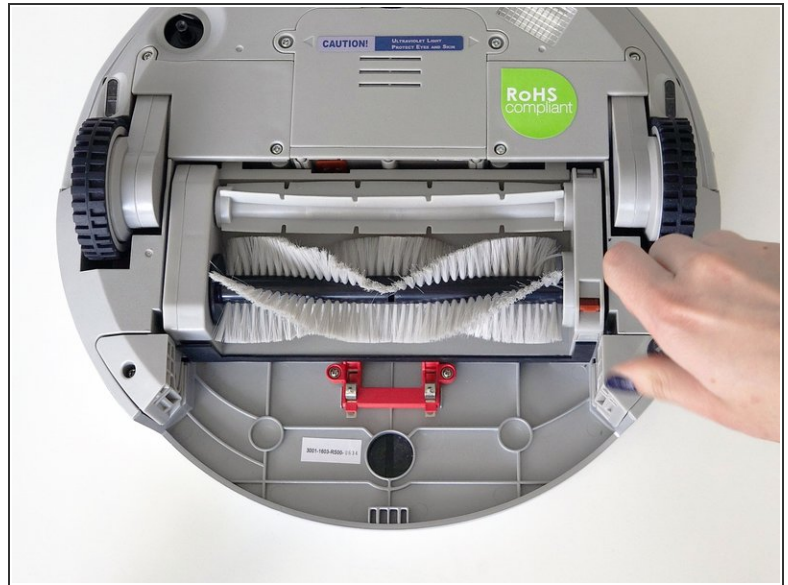
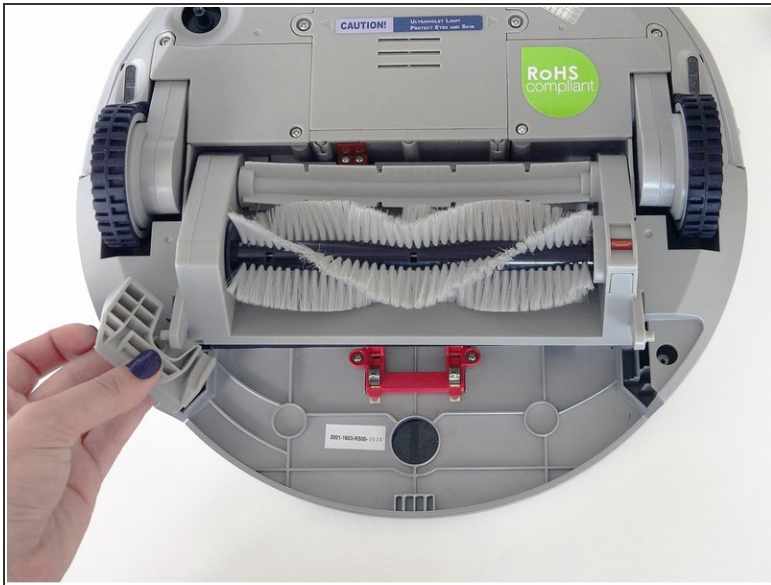
- Place the stabilizer you removed previously onto the new motor so it lines up with the screw posts.
- Push down so it holds securely. Then reinstall all four screws.

## Step 8 — Plug in the Main Brushes



- Now attach the brush compartment back onto bObi Pet. Plug it in first.
- Then, replace its red brush fastener on the screw posts on bObi Pet and install the 2 screws.

## Step 9 — Secure the Brushes to bObi Pet



- Position the brush compartment back in its original place.
- Now reinsert the corner pieces on both sides of the dustbin, with the arms of the brush attachment linked.
- ☑ Make sure the rubber strip near bObi Pet's dustbin is not stuck under the brush compartment.
- Install the two screws on the corner pieces.

## Step 10 — Replace the Dustbin



- Ensure the bin slides in easily before using bObi Pet again, and your repair is complete.

When complete, bObi Pet's main brushes will be ready to sweep your floors again.