



bObi Pet Power Switch Replacement

This quick and easy tutorial will help you remove and replace the power switch on a bObi Pet Robotic Vacuum and Mop.

Written By: Chelsea



INTRODUCTION

This DIY repair can be done in a few minutes with just a Phillips head screwdriver and a new power switch. Here you'll learn how to open and close bObi Pet, as well as replace the power switch and inlet.

You can also follow the video guide: <https://www.youtube.com/watch?v=1PEyz9em...>



TOOLS:

- [Phillips #2 Screwdriver](#) (1)



PARTS:

- [bObi Pet Power Switch](#) (1)

Step 1 — Turn bObi Pet Off



- Before we get started, turn bObi Pet OFF and flip her over onto a flat surface.
- Next, remove bObi Pet's dustbin. Grip the small tab on the back of the bin, and pull to remove.

Step 2 — Remove the Front Wheel



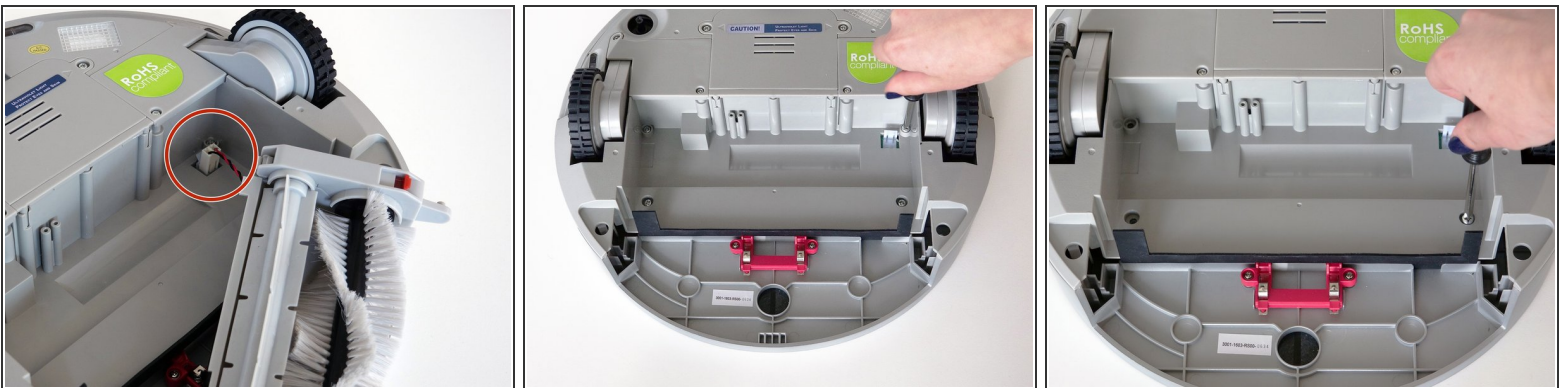
- Grip the front wheel and pull straight up, using the screwdriver for leverage.
 - The wheel will pop out and you will see two screws beneath it.
 - There is a larger screw set deeper in the wheel compartment. Use the screwdriver to remove it.
- ☑ Remember to keep all screws and parts removed from bObi Pet safely aside during the repair. They may be needed for re-assembly.

Step 3 — Remove the Dustbin's Holders



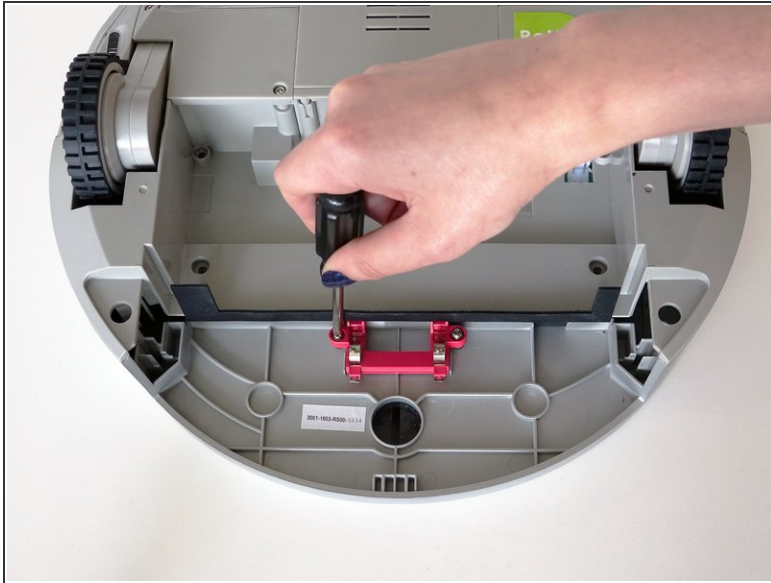
- Remove the screws on both sides of bObi Pet's dustbin. Then, remove the corner pieces that were held down by the screws.
- Grip the brush compartment and pull down to reveal two screws on a red fastener.
- Remove them with the screwdriver.

Step 4 — Remove the Main Brush Attachment



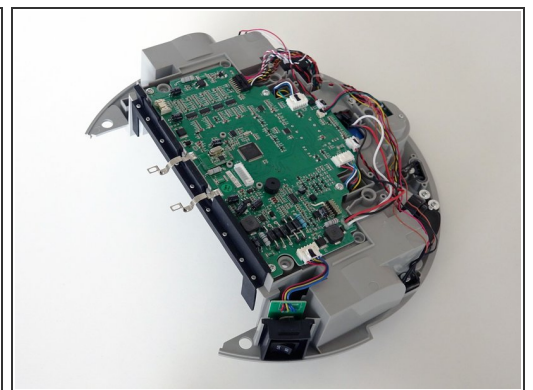
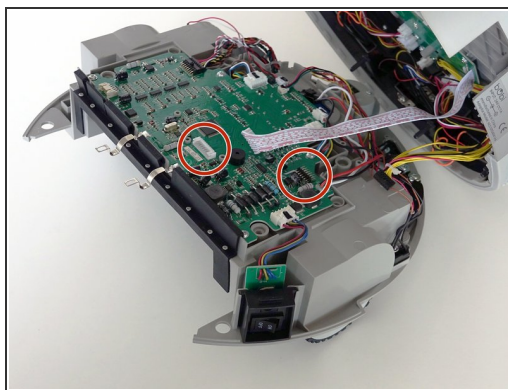
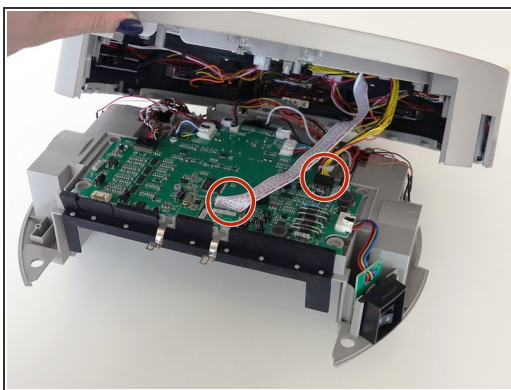
- Pull the brush compartment up until the fastener is freed from bObi Pet. Then, detach the brush compartment's circuit plug and set it aside.
- Remove the 4 screws located beneath the brush compartment.

Step 5 — Remove the Cover Screws



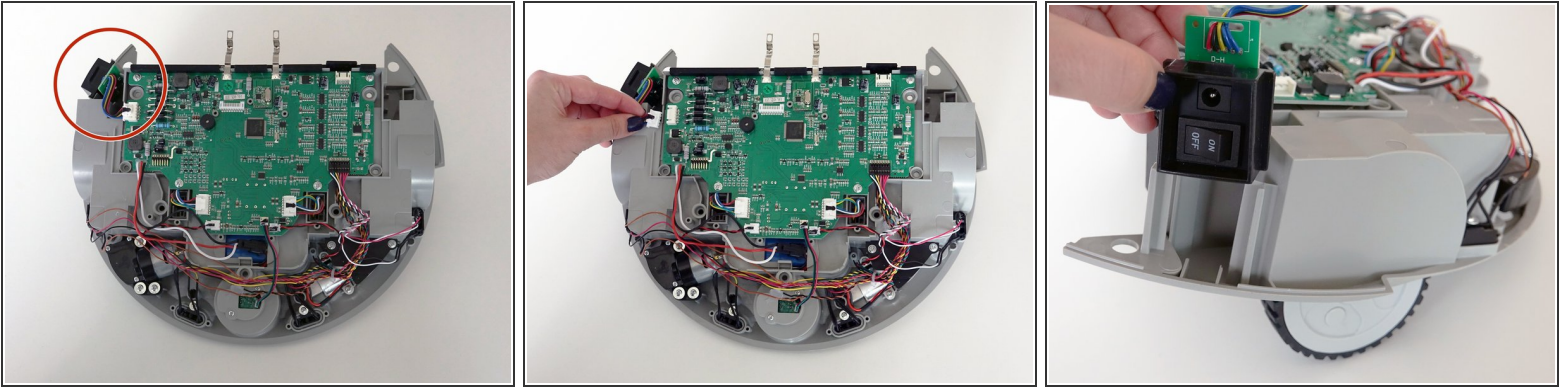
- Remove the 2 screws on the dustbin's red fastener.
- Remove the fastener and set it aside for reassembly.
- The cover is no longer secured, so carefully flip bObi Pet onto her wheels.

Step 6 — Detach the Cover



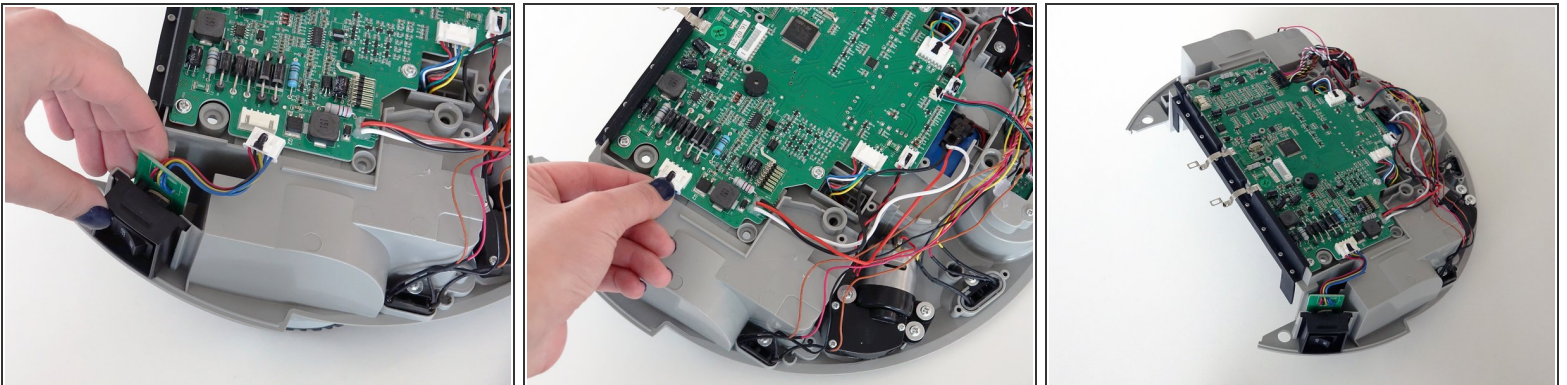
- Lift the cover to reveal the main board underneath.
- Remove the two circuit plugs connecting the lid to the mainboard.
- bObi Pet's cover is entirely separated, and you may now access any of her internal parts for replacement.

Step 7 — Remove the Switch



- The power switch is located on bObi Pet's right side, behind the right wheel.
- Press the small white tab on the circuit plug, then pull yo detach it from the mainboard.
- Slide the switch up out of its holders.

Step 8 — Place a New Switch



- Slide the replacement switch straight down into the holders on bObi Pet.
- Attach the circuit plug to the mainboard securely, and you're ready to start closing bObi Pet.
- See the guide for closing bObi Pet here: [Assemble bObi Pet Post-Repair](#)

To reassemble your device, see the guide for assembling bObi Pet after any internal repair:

[Assemble bObi Pet Post-Repair](#)