



bObi Pet Touch Sensors Replacement

This guide covers opening bObi Pet and replacing the touch sensor strips only. It will only affect bObi Pet's abilities to react upon touching obstacles, not her ability to see the obstacles.

Written By: Chelsea



INTRODUCTION

Before starting this replacement, you should troubleshoot using bObi Pet's Check Up Test. It is the same for bObi Classic and Pet, available here:

<https://www.youtube.com/watch?v=F2lUnk-E...>

If you've determined that only the touch sensors on one of both sides of bObi Pet work abnormally, continue with this repair.

If there are issues with any other parts of the bumper, try this repair instead: [bObi Pet Bumper Replacement](#)



TOOLS:

- [Phillips #2 Screwdriver](#) (1)



PARTS:

- [bObi Pet Touch Sensor Strips](#) (1)

Step 1 — Turn bObi Pet Off



- Before we get started, turn bObi Pet OFF and flip her over onto a flat surface.
- Next, remove bObi Pet's dustbin. Grip the small tab on the back of the bin, and pull to remove.

Step 2 — Remove the Front Wheel



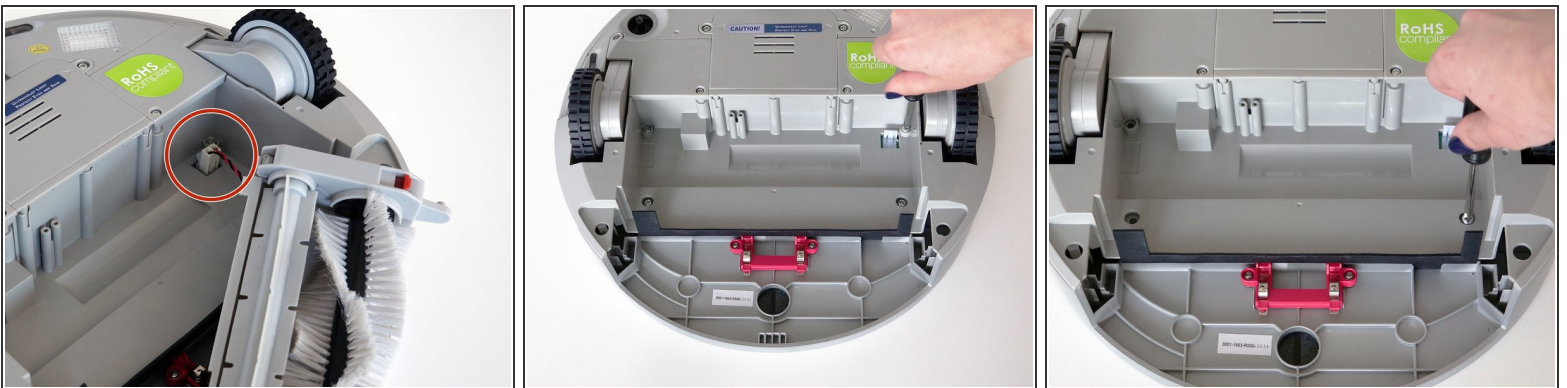
- Grip the front wheel and pull straight up, using the screwdriver for leverage.
 - The wheel will pop out and you will see two screws beneath it.
 - There is a larger screw set deeper in the wheel compartment. Use the screwdriver to remove it.
- ☑ Remember to keep all screws and parts removed from bObi Pet safely aside during the repair. They may be needed for re-assembly.

Step 3 — Remove the Dustbin's Holders



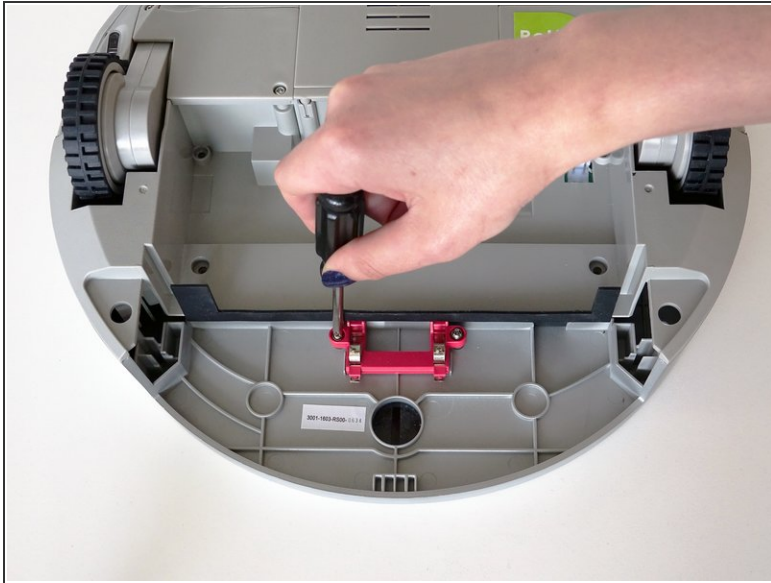
- Remove the screws on both sides of bObi Pet's dustbin. Then, remove the corner pieces that were held down by the screws.
- Grip the brush compartment and pull down to reveal two screws on a red fastener.
- Remove them with the screwdriver.

Step 4 — Remove the Main Brush Attachment



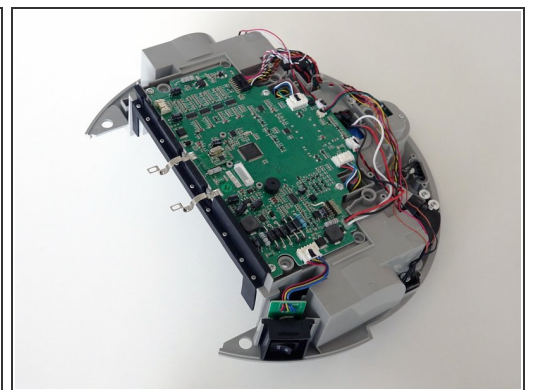
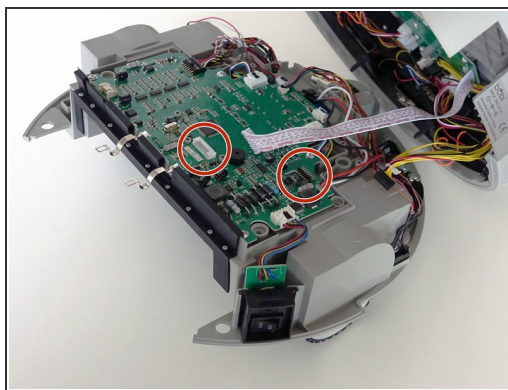
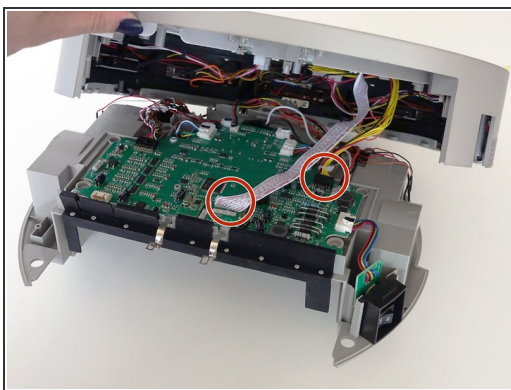
- Pull the brush compartment up until the fastener is freed from bObi Pet. Then, detach the brush compartment's circuit plug and set it aside.
- Remove the 4 screws located beneath the brush compartment.

Step 5 — Remove the Cover Screws



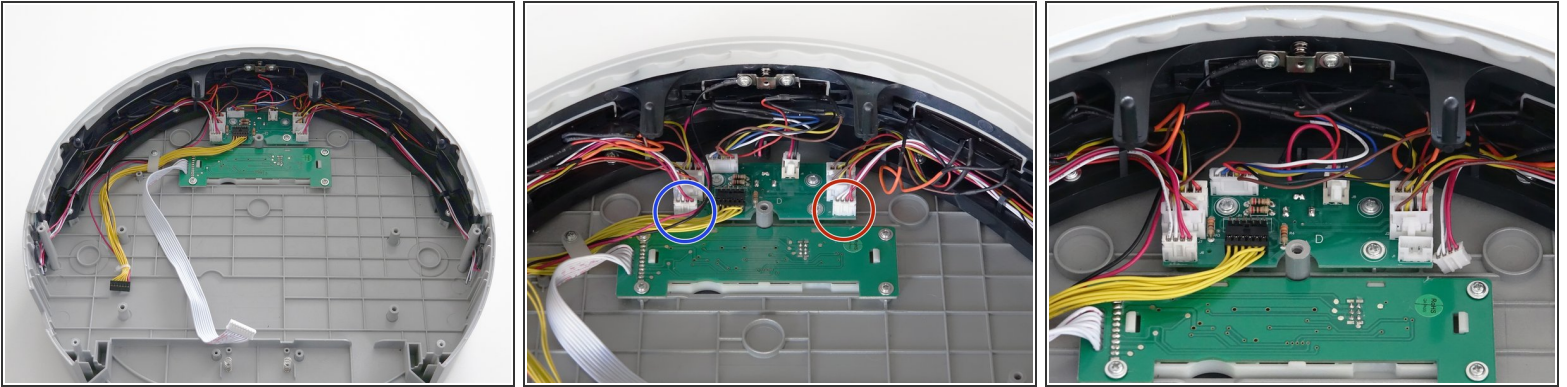
- Remove the 2 screws on the dustbin's red fastener.
- Remove the fastener and set it aside for reassembly.
- The cover is no longer secured, so carefully flip bObi Pet onto her wheels.

Step 6 — Detach the Cover



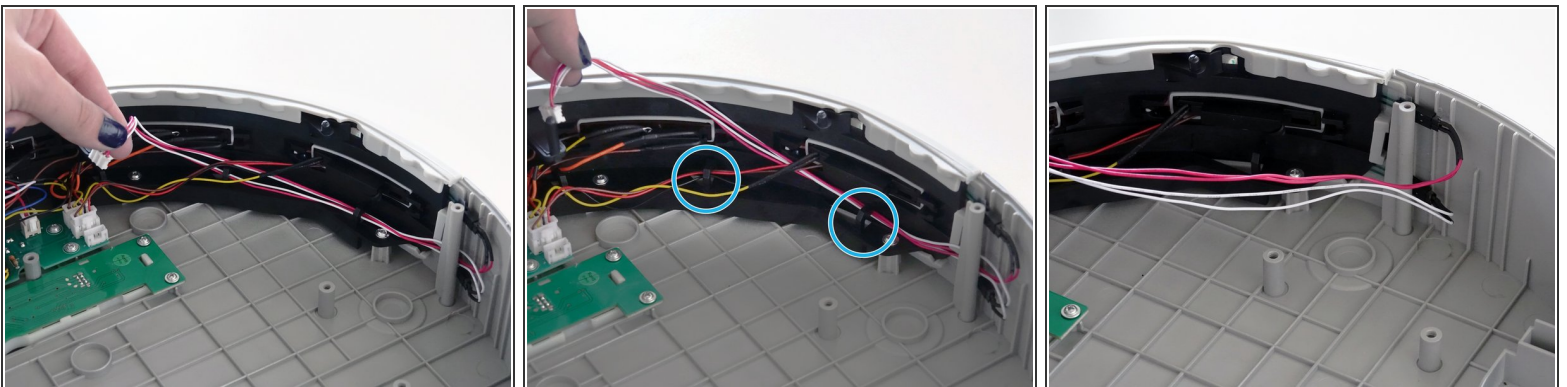
- Lift the cover to reveal the main board underneath.
- Remove the two circuit plugs connecting the lid to the mainboard.
- bObi Pet's cover is entirely separated, and you may now access any of her internal parts for replacement.

Step 7 — Unplug the Sensor Strip



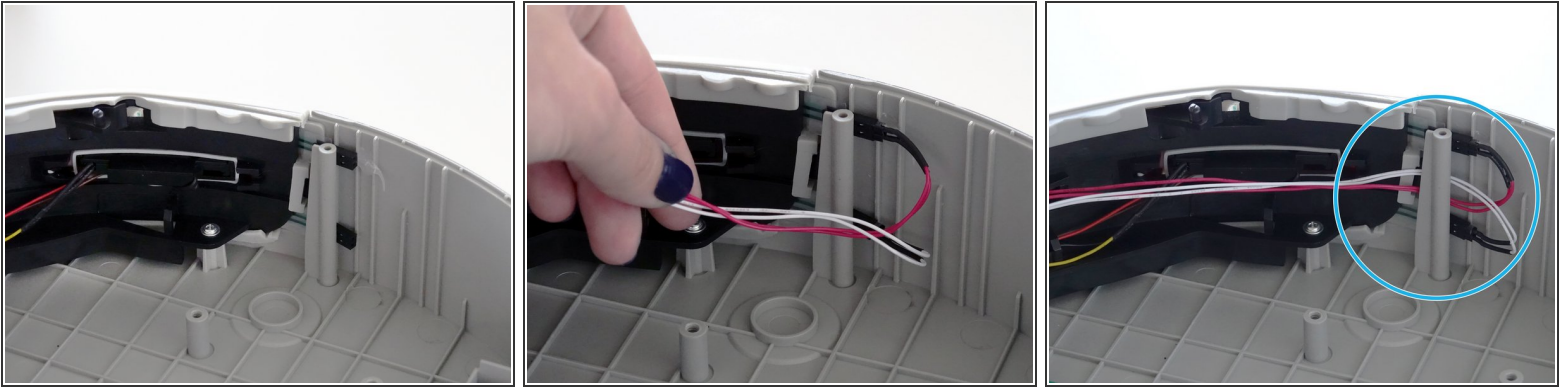
- bObi Pet's sensor strips are attached to the circuit board by red and white wires.
- Since bObi Pet's lid is now flipped, the sensor strip shown on the left receives signals from bObi Pet's right half of touch sensors during the Check Up Test.
- The sensor strip shown plugged in on the right of the cover circuit board receives signals from bObi Pet's left half of touch sensors.
- Unplug the side you wish to replace from the circuit board. In this case, bObi Pet's left side of sensor strips is being replaced.

Step 8 — Remove the Sensor Strip



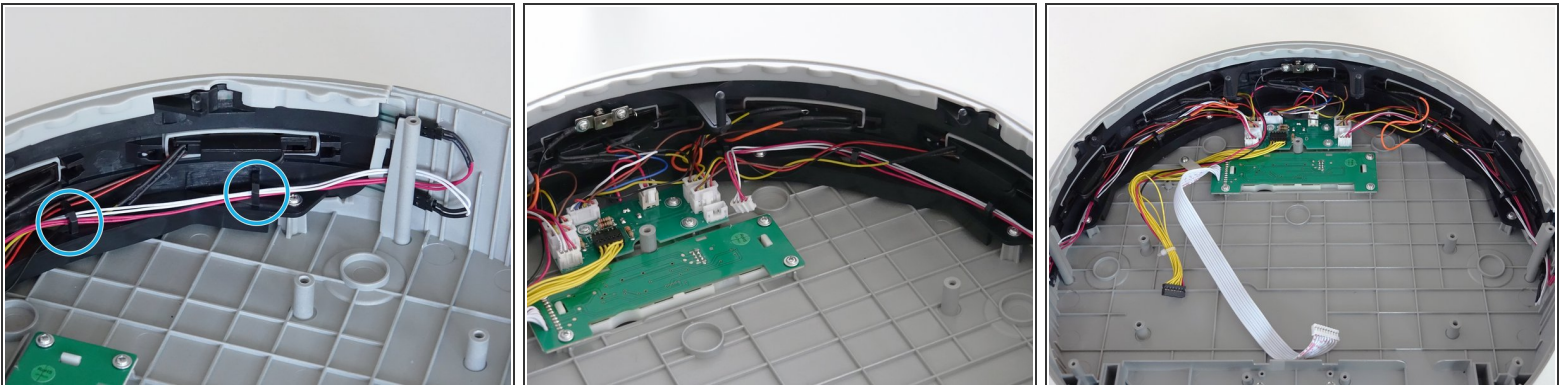
- Feed the wires towards the edge of the bumper.
- You will have to remove them from the hooks along the inside edge of the bumper.

Step 9 — Place a New Sensor Strip



- Once you've freed the wires from all the hooks, pull to unplug them from bObi Pet.
- Attach your new touch sensors. The red wire plugs on top and the white wire below.
- Then, tuck both wires back behind the screw post on the cover.

Step 10 — Plug in the Touch Sensors



- Feed the wires of your touch sensors back through the hooks along the inside edge of the bumper.
- Once you reach the middle, plug in your touch sensors and you're ready to close the cover.
- This guide will walk you through closing bObi Pet: [Assemble bObi Pet Post-Repair](#)

To finish off this repair, see the guide on closing bObi Pet:

[Assemble bObi Pet Post-Repair](#)