



# bObi Pet UV Lamp Replacement

If bObi Pet's disinfecting UV lamp stops working, this walkthrough will help you repair bObi Pet yourself.

Written By: Chelsea



## INTRODUCTION

Using a Phillips head screwdriver, this tutorial will show you how to open bObi Pet and replace the disinfecting UV lamp.

The video version of this tutorial is available here: <https://www.youtube.com/watch?v=58P04Sti...>



### TOOLS:

- [Phillips #2 Screwdriver](#) (1)



### PARTS:

- [bObi Pet UV Lamp](#) (1)

## Step 1 — Turn bObi Pet Off



- Before we get started, turn bObi Pet OFF and flip her over onto a flat surface.
- Next, remove bObi Pet's dustbin. Grip the small tab on the back of the bin, and pull to remove.

## Step 2 — Remove the Front Wheel



- Grip the front wheel and pull straight up, using the screwdriver for leverage.
  - The wheel will pop out and you will see two screws beneath it.
  - There is a larger screw set deeper in the wheel compartment. Use the screwdriver to remove it.
- ☑ Remember to keep all screws and parts removed from bObi Pet safely aside during the repair. They may be needed for re-assembly.

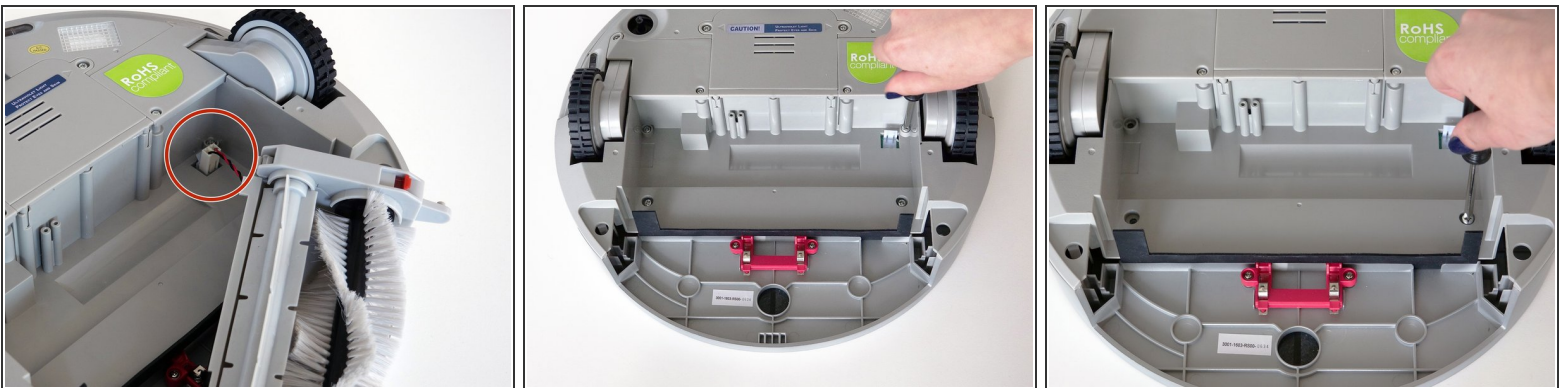


### Step 3 — Remove the Dustbin's Holders



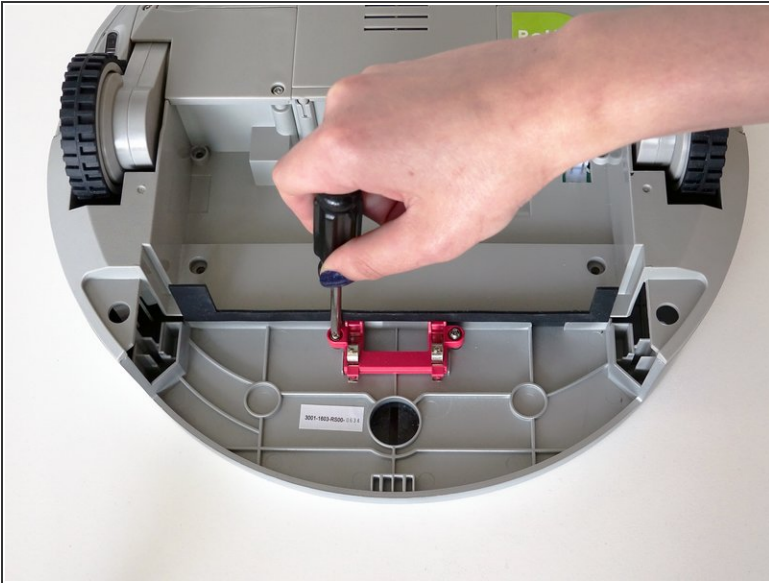
- Remove the screws on both sides of bObi Pet's dustbin. Then, remove the corner pieces that were held down by the screws.
- Grip the brush compartment and pull down to reveal two screws on a red fastener.
- Remove them with the screwdriver.

### Step 4 — Remove the Main Brush Attachment



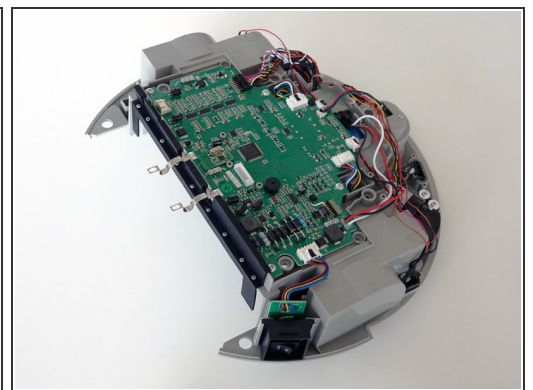
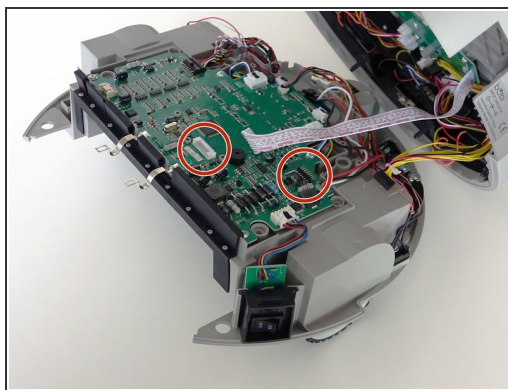
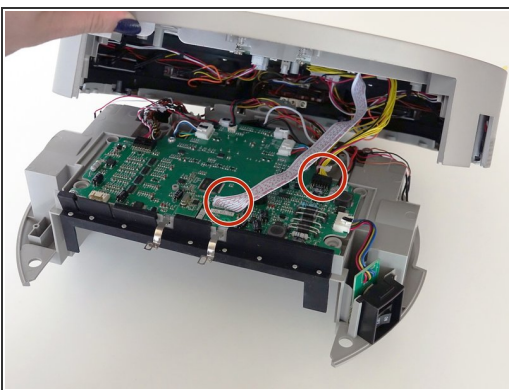
- Pull the brush compartment up until the fastener is freed from bObi Pet. Then, detach the brush compartment's circuit plug and set it aside.
- Remove the 4 screws located beneath the brush compartment.

## Step 5 — Remove the Cover Screws



- Remove the 2 screws on the dustbin's red fastener.
- Remove the fastener and set it aside for reassembly.
- The cover is no longer secured, so carefully flip bObi Pet onto her wheels.

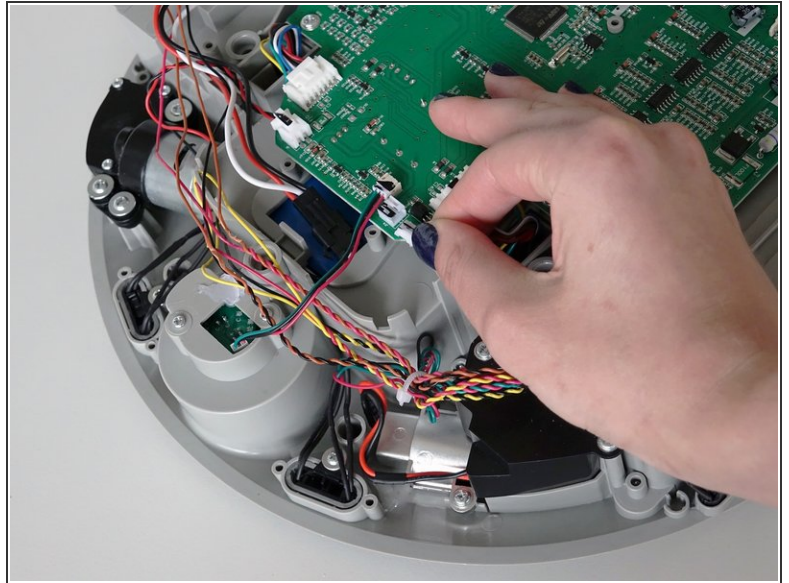
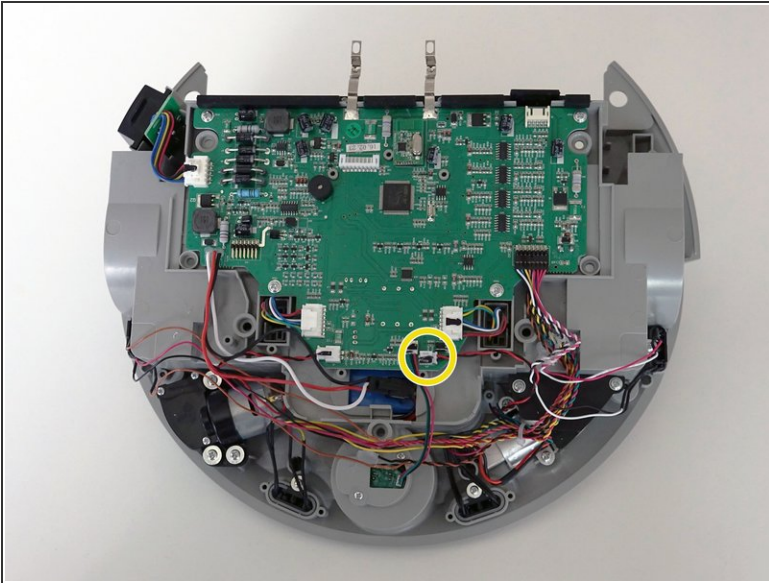
## Step 6 — Detach the Cover



- Lift the cover to reveal the main board underneath.
- Remove the two circuit plugs connecting the lid to the mainboard.
- bObi Pet's cover is entirely separated, and you may now access any of her internal parts for replacement.

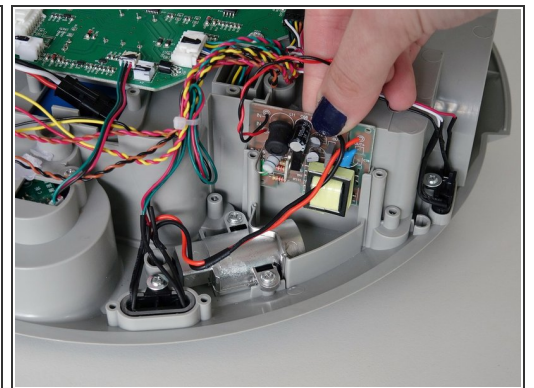
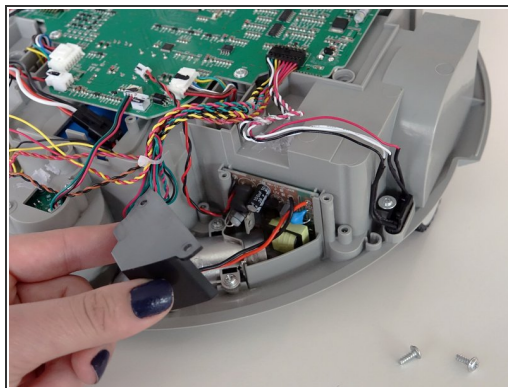
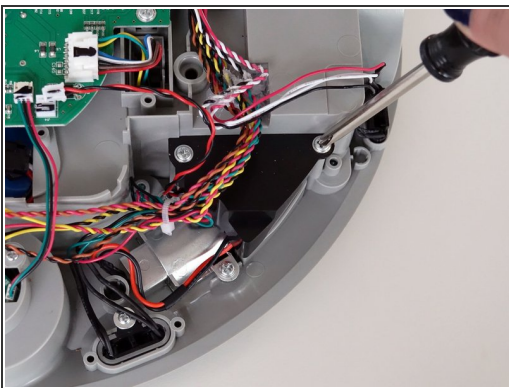


## Step 7 — Unplug the Lamp



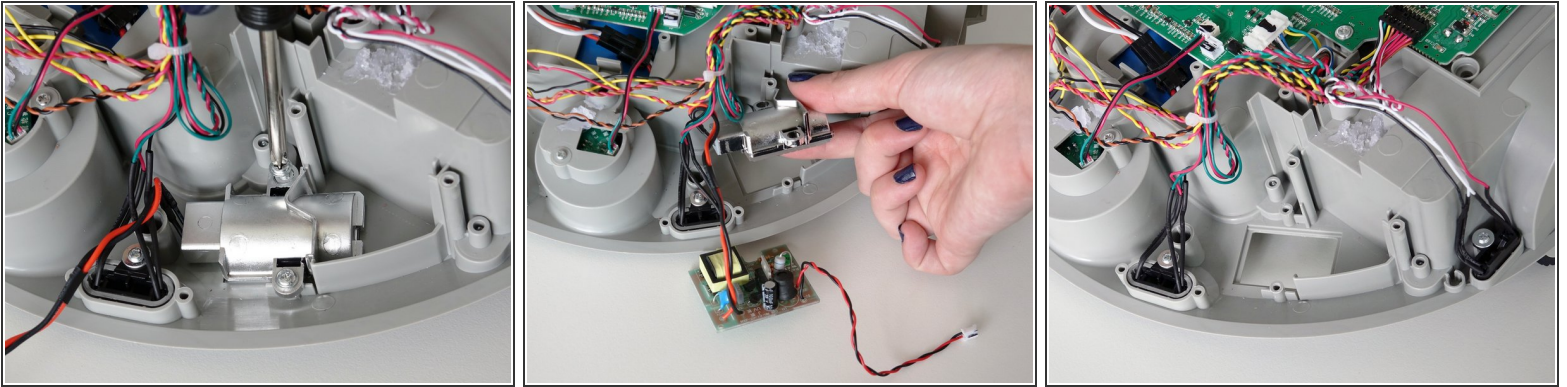
- The UV lamp connects to bObi Pet's left side.
- Remove the small, red-and-black-wired circuit plug, and break off any glue holding it in place.

## Step 8 — Remove the Circuit Board Cover



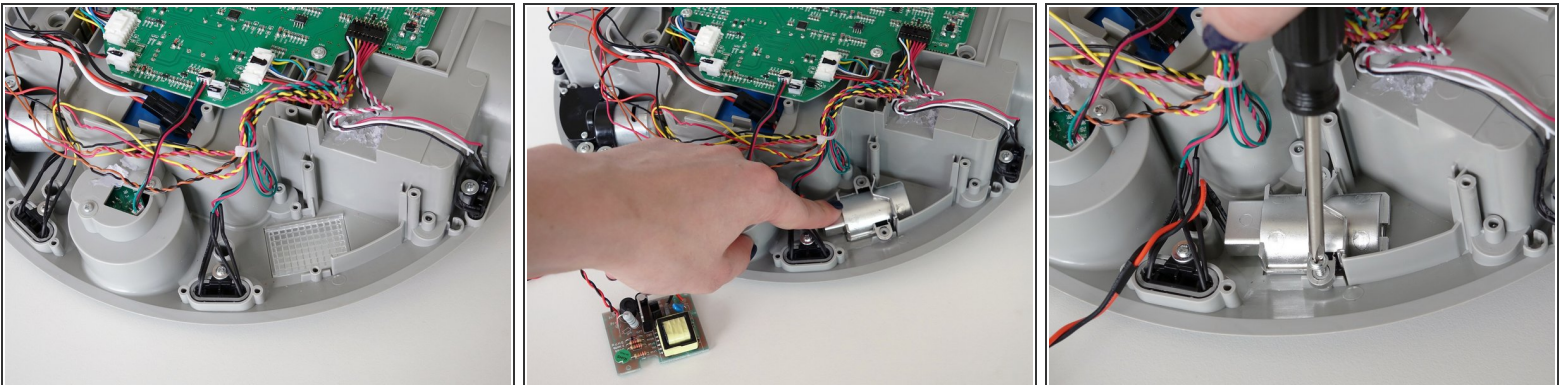
- Remove the 2 screws on the black circuit cover.
- Lift the black cover up to expose the small circuit board for bObi Pet's UV lamp.
- Then, slide the circuit board up to remove.

## Step 9 — Remove the Lamp



- Next, remove the 2 screws on the UV lamp.
- Gently push the UV lamp out of its spot from underneath.
- Then, lift out the whole lamp, including the cover plate.

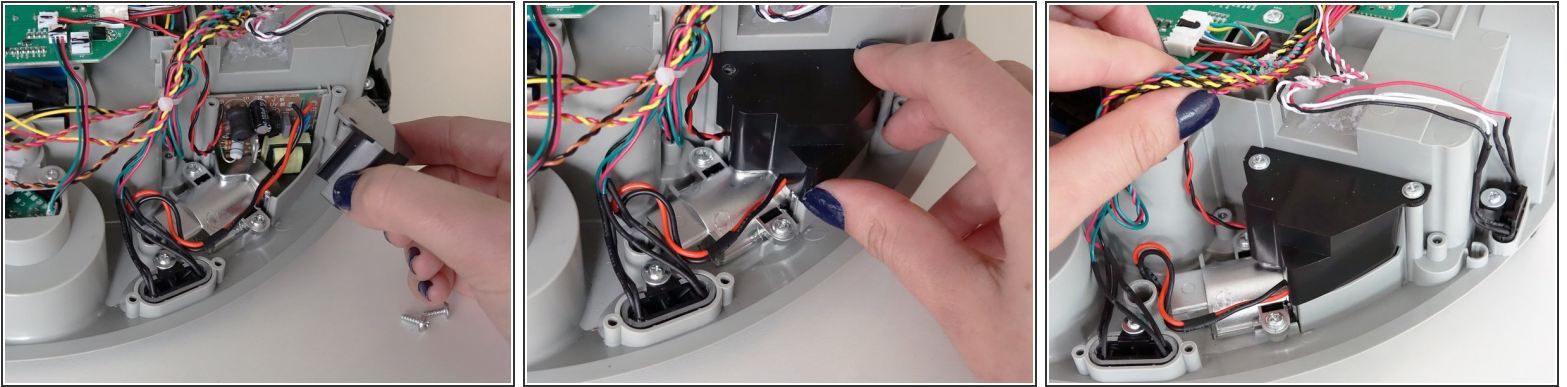
## Step 10 — Place the New UV Lamp



- Lay the replacement lamp in the empty space. Place the cover plate in first, then the lightbulb on top.
- Once the lamp lies flat, install its 2 screws.



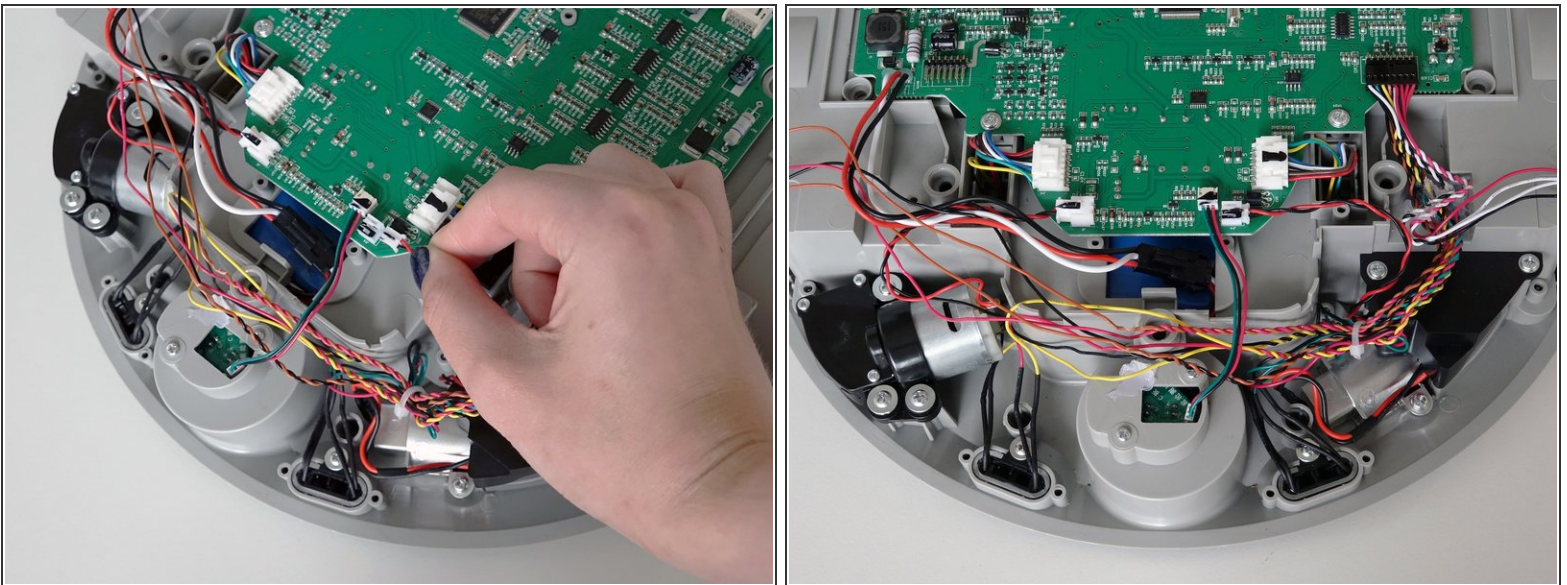
## Step 11 — Replace the Circuit Board Cover



- Slide the new circuit board down into its holder and replace the black cover.

- ☑ Be sure to tuck the lamp's wires through the indentations at the bottom of the cover before installing its 2 screws.

## Step 12



- Attach the lamp's circuit plug to the main board and you'll be ready to close bObi Pet's cover.
- See this guide for help re-assembling bObi Pet: [Assemble bObi Pet Post-Repair](#)

To put bObi Pet back together, refer to this guide: [Assemble bObi Pet Post-Repair](#)