



bObi Robotic Vacuum Front Wheel Replacement

This guide will teach you how to remove, clean, and replace the front wheel on bObi.

Written By: Chelsea



INTRODUCTION

This guide will teach you how to remove, clean, and replace the front wheel on bObi.



TOOLS:

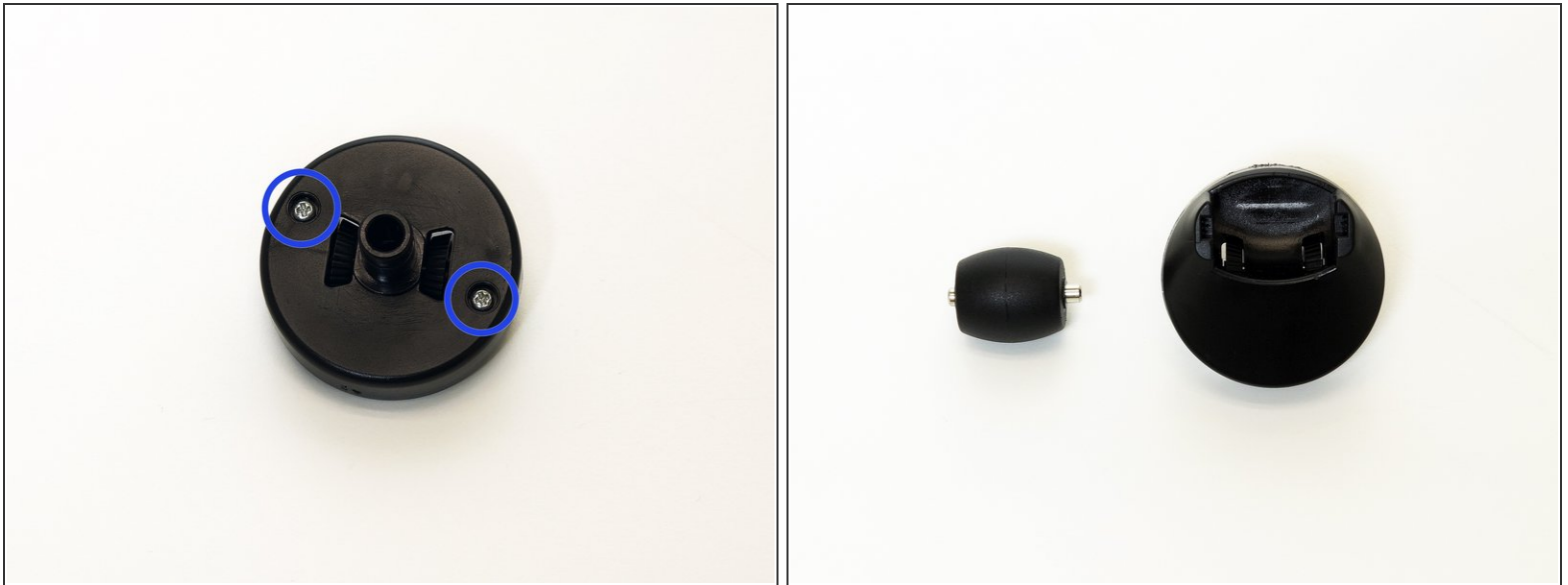
- [Phillips #2 Screwdriver](#) (1)
-


Step 1 — Front Wheel



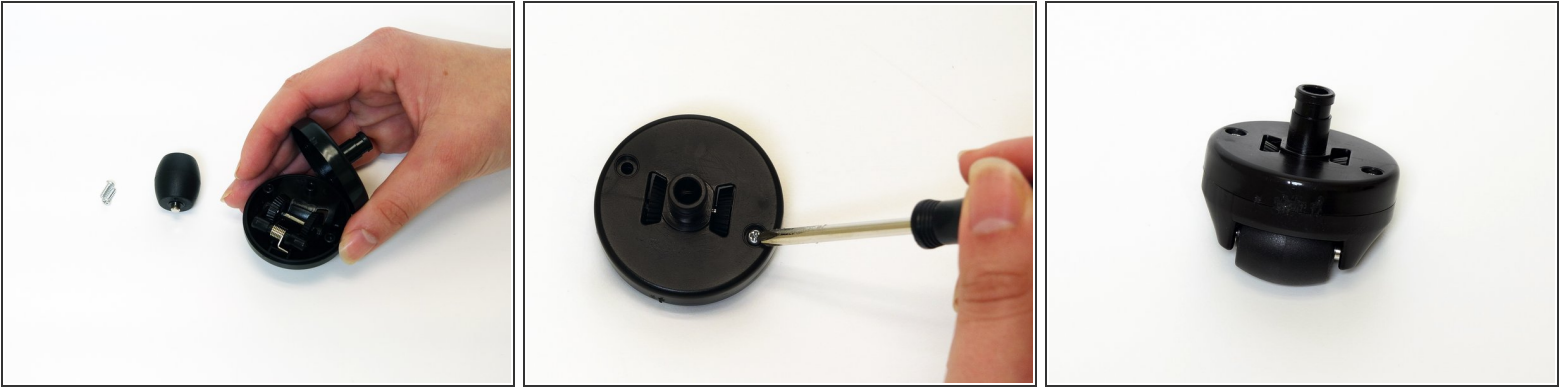
- Turn the front wheel so it faces bObi's front touch sensors.
 - Grip the wheel and pull straight up.
- i** You may use a screwdriver for leverage when removing the wheel.

Step 2



-  This step is only necessary when cleaning the wheel. Skip to step 4 for instructions on installing a new wheel.
- To disassemble and deep clean the wheel, remove two small screws found on the bottom of the wheel. Then you can open it.
 - Grip the actual wheel and pull up to detach and clean beneath it. Use the screwdriver as leverage if you have difficulty separating the parts.

Step 3



i This step is only necessary when cleaning bObi's front wheel. Skip to step 4 for instructions on installing the wheel.

- After cleaning, replace the small spring piece inside the wheel.
- Hold the wheel cover back together and install the two screws.
- Place the small wheel back in its space and apply pressure until it reattaches.

Step 4



- Place the wheel back in bObi. Make sure it faces in the same way as it did when removing (wheel closer to bObi's front).
- Push down and the wheel will attach to bObi.

To reassemble your device, follow these instructions in reverse order.