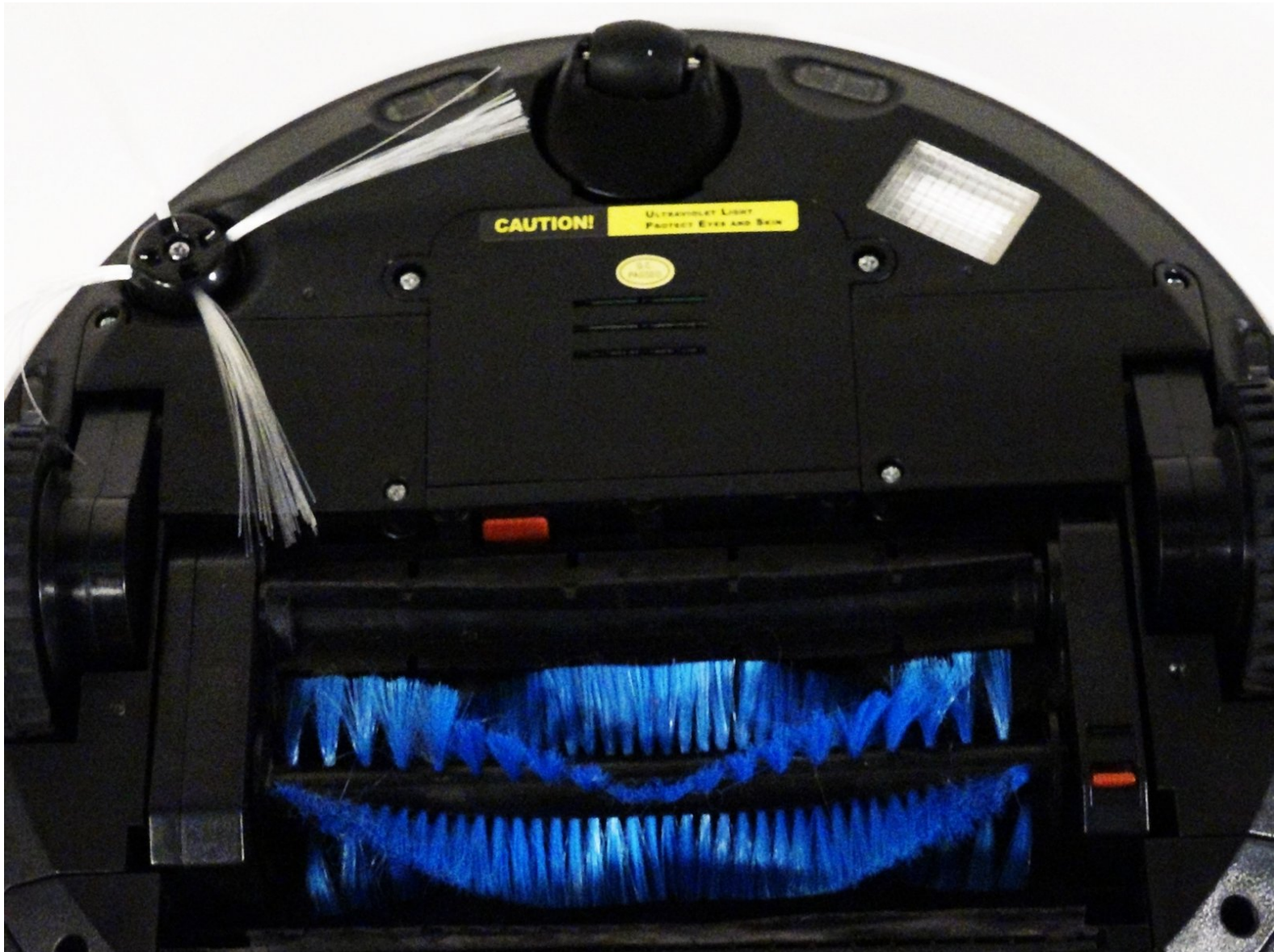




bObi Robotic Vacuum Main Brush Motor Replacement

How to remove and replace the motor for bObi's main brushes.

Written By: Chelsea



INTRODUCTION

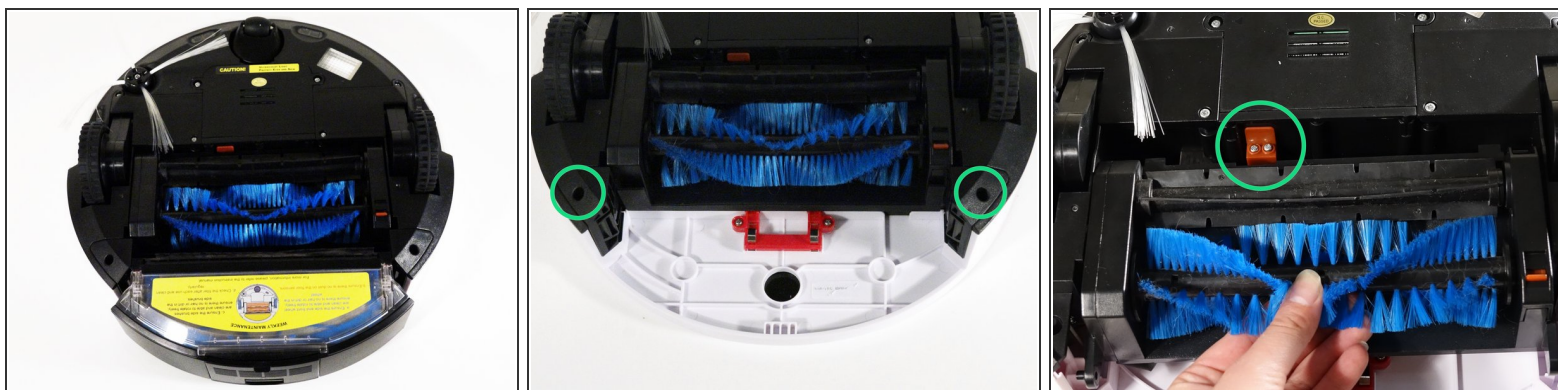
How to remove and replace the motor for bObi's main brushes.



TOOLS:

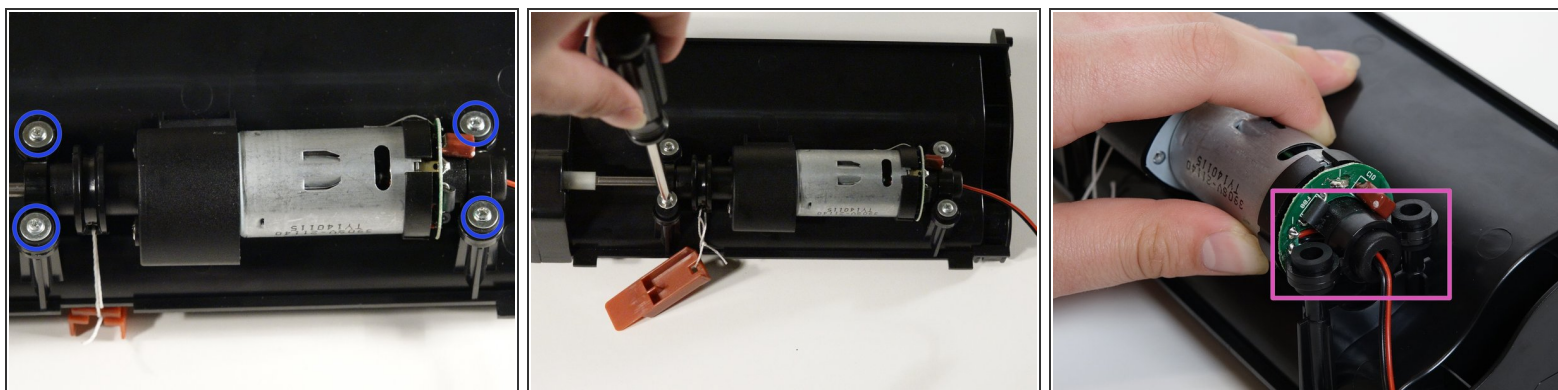
- [Phillips #2 Screwdriver](#) (1)
-

Step 1 — Main brush motor



- Remove bObi's dustbin. Press the small latch on the back and it will pop out.
- Uninstall the 2 screws close to bObi's dustbin, plus 2 smaller screws above the main brushes.

Step 2



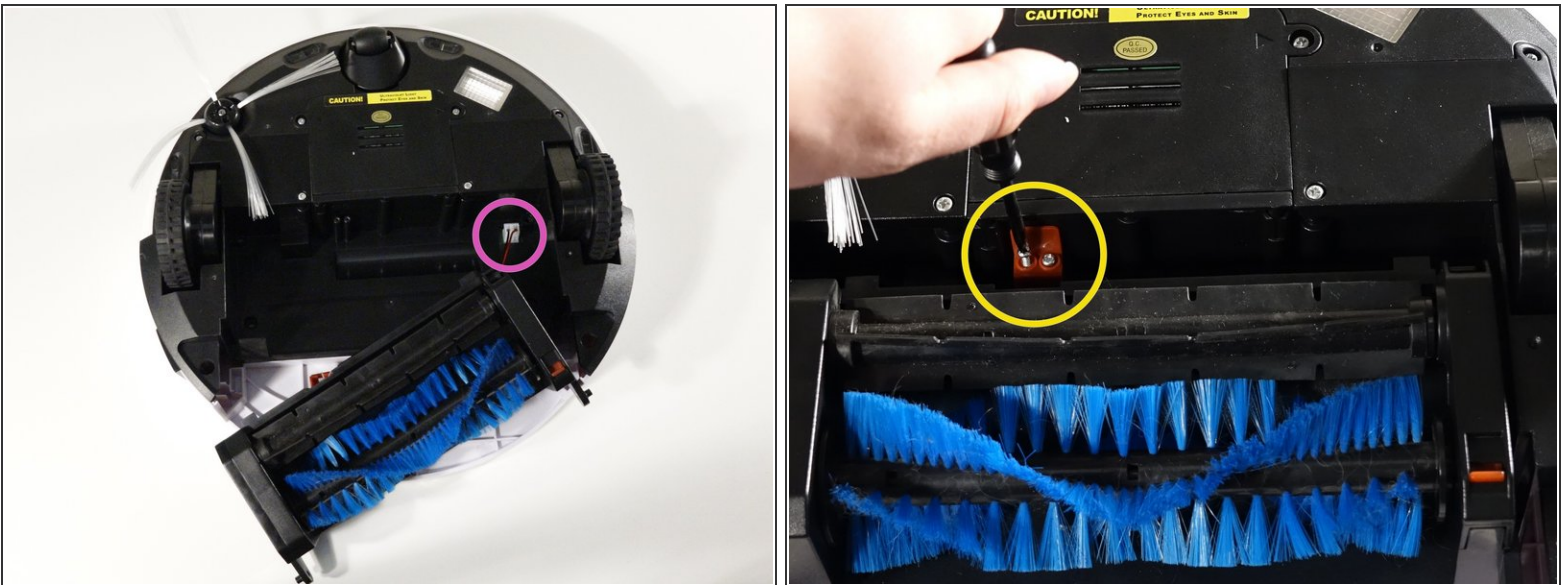
- To detach the brushes completely, unplug them from bObi.
- The motor is on the bottom of the main brush attachment. Uninstall the four screws which secure it, then lift the motor out.
- Remove the stabilizer attached to the motor's end, closer to its circuit plug before pulling the whole piece out.

Step 3



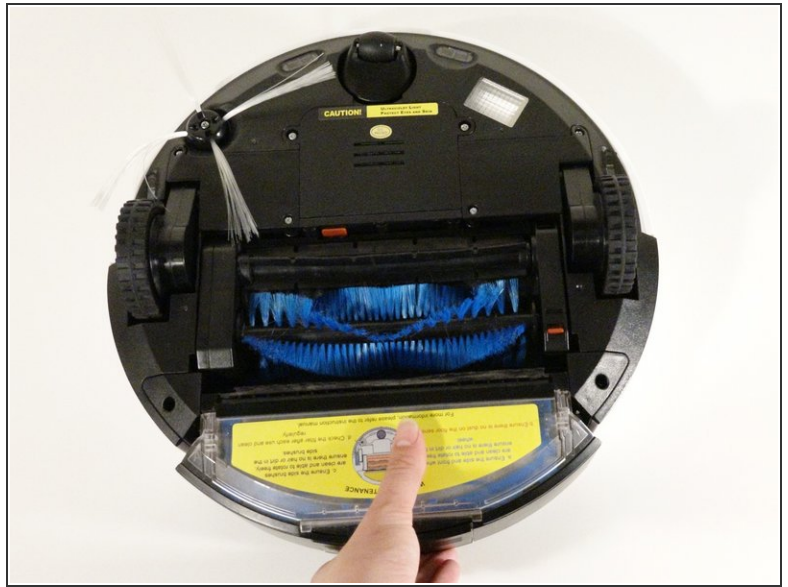
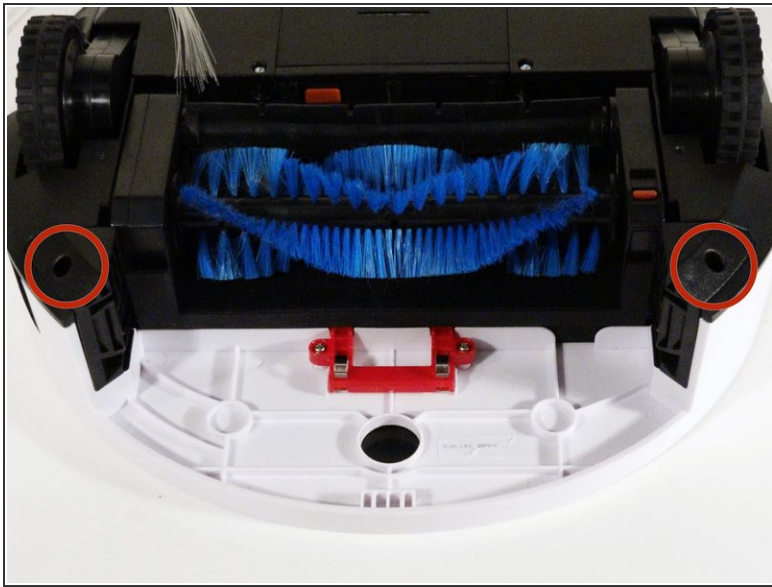
- Slide the long metal end in first, through the second stabilizer, so the end fits inside the motor holder.
- Place the stabilizer you removed previously on the new motor.

Step 4



- Align the stabilizer with the screw posts on the brush holder, then install all four screws.
- Connect the motor's circuit plug.
- Place the main brush attachment in bObi so it sits flat.
- Line up the red fastener on bObi, and replace its two smaller screws.

Step 5



- Lay the two screw holders down. Then install each screw.
- Slide bObi's dustbin back in until it locks in place.

To reassemble your device, follow these instructions in reverse order.