



bObi Robotic Vacuum Screen Replacement

The step-by-step guide for removing bObi's cover and screen.

Written By: Chelsea



INTRODUCTION

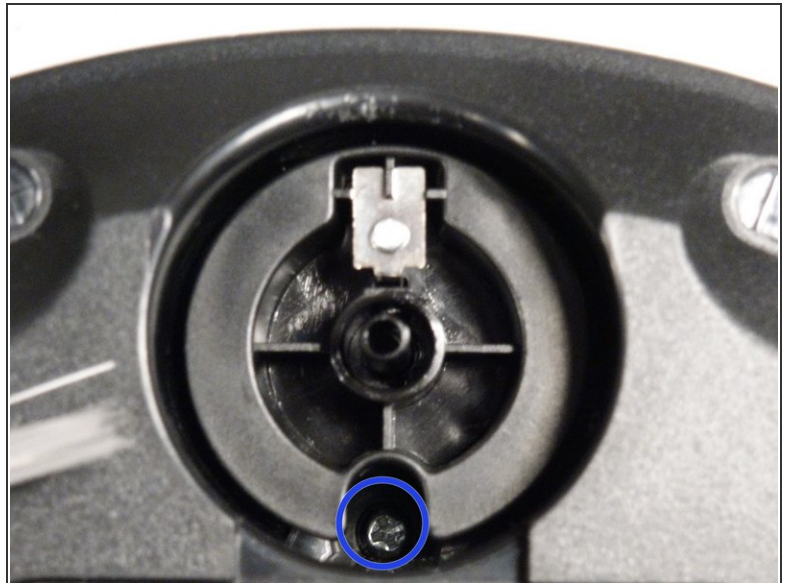
The step-by-step guide for removing bObi's cover and screen. For help putting bObi back together, refer to: [Closing bObi's Cover Post-Repair](#)



TOOLS:

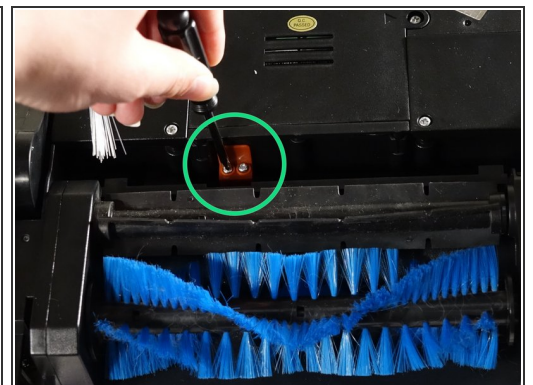
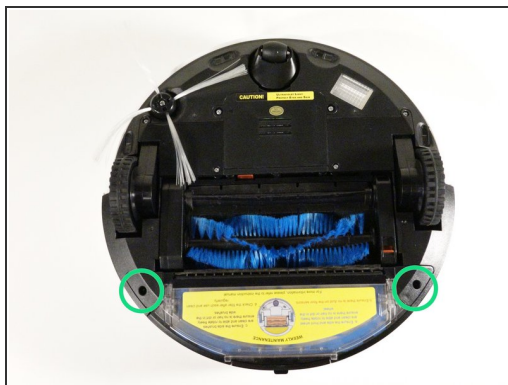
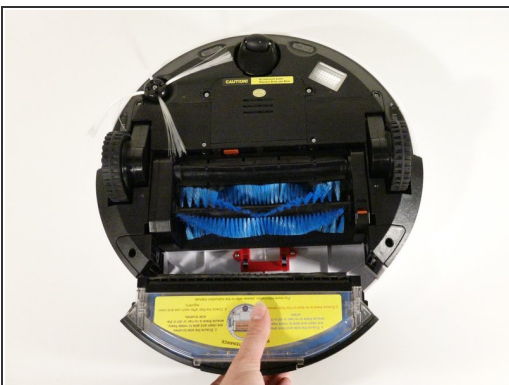
- [Phillips #2 Screwdriver](#) (1)
-

Step 1 — Top Cover



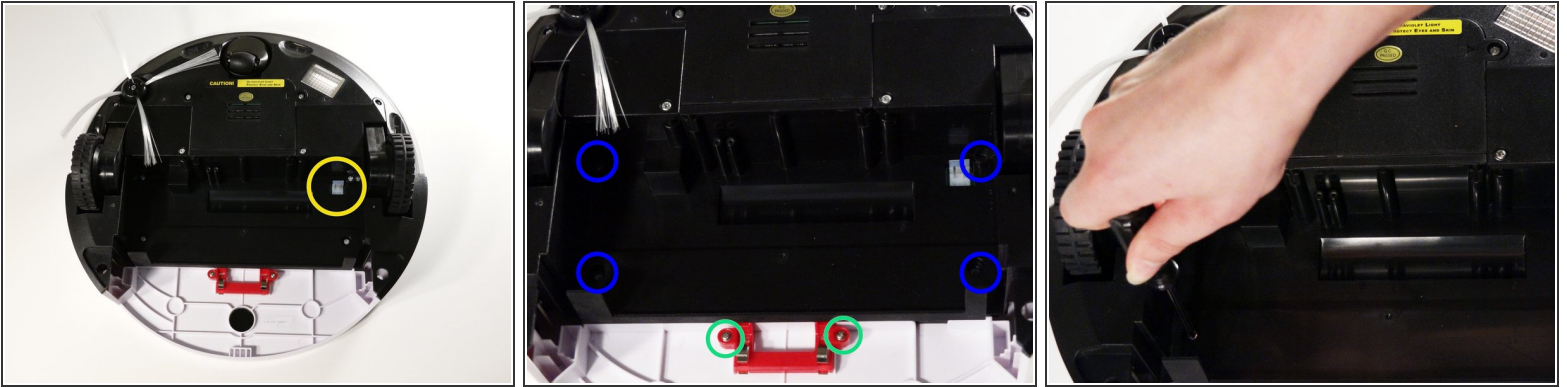
- Remove bObi's front wheel to access one of the screws holding bObi together.
- i* Make sure the wheel is turned closer to bObi's front touch sensors. Use your screwdriver for leverage, and the wheel will pop up and out.
- Uninstall the larger screw that sits deeper in the wheel compartment.

Step 2



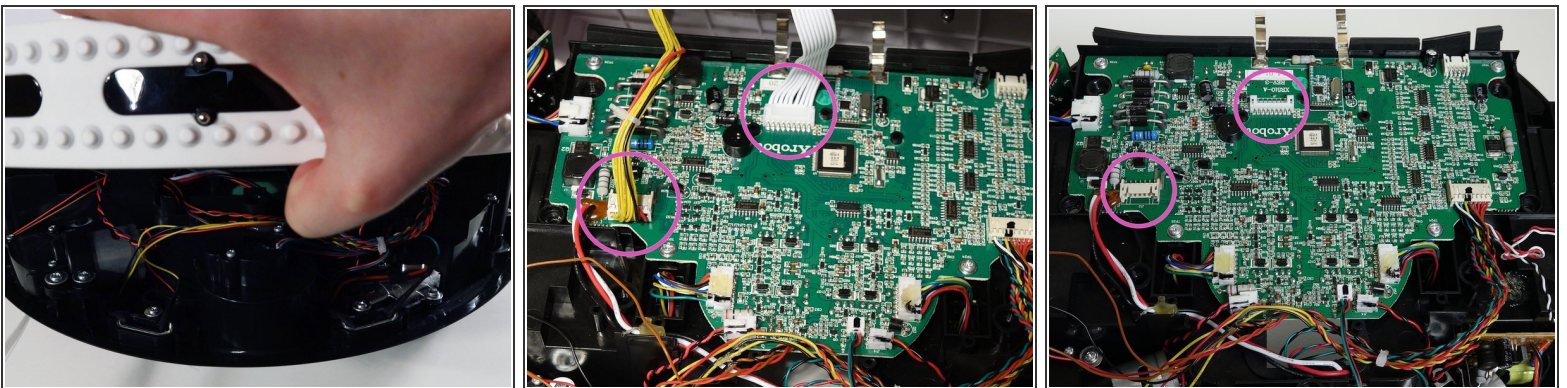
- Remove bObi's dustbin.
- Uninstall the 2 screws close to the bin and 2 smaller screws above her main brushes.

Step 3



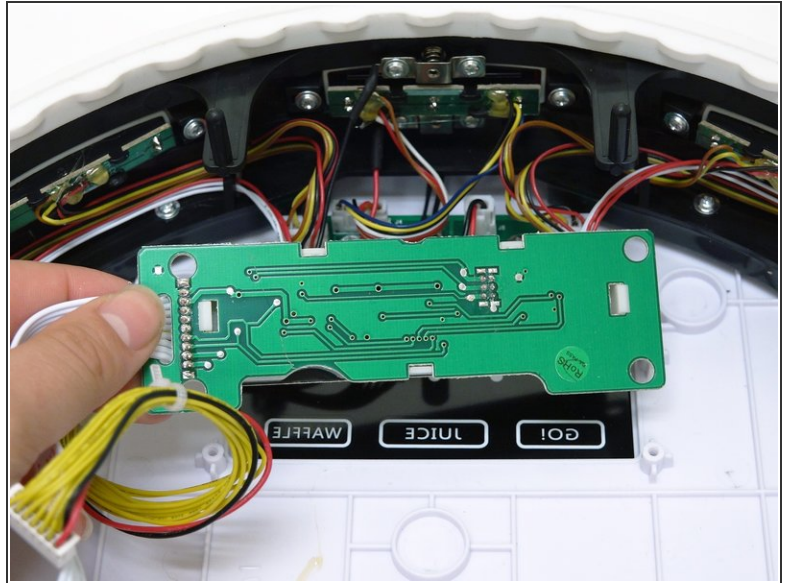
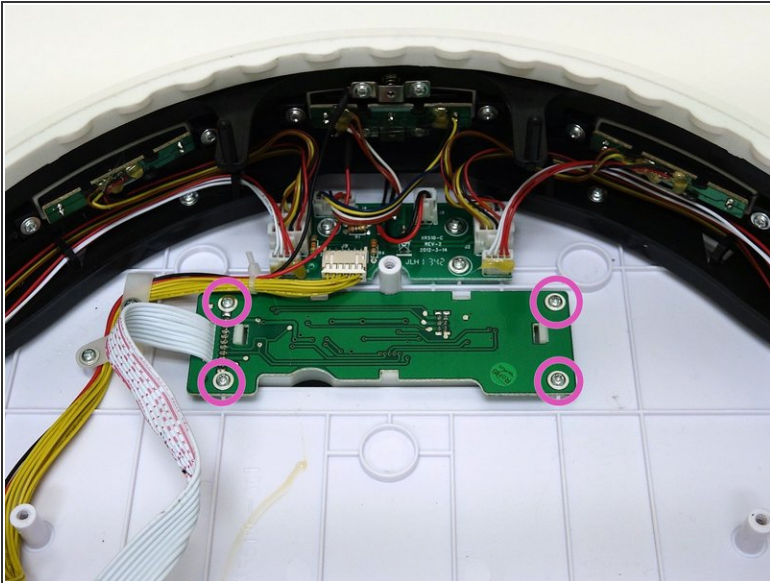
- Lift the brush holder. To detach completely, unplug it from bObi.
- Remove the two screws on the dustbin contact point holder inside bObi.
- There are 4 screws beneath the main brushes. Uninstall these, and open bObi up to expose her main circuit board.

Step 4



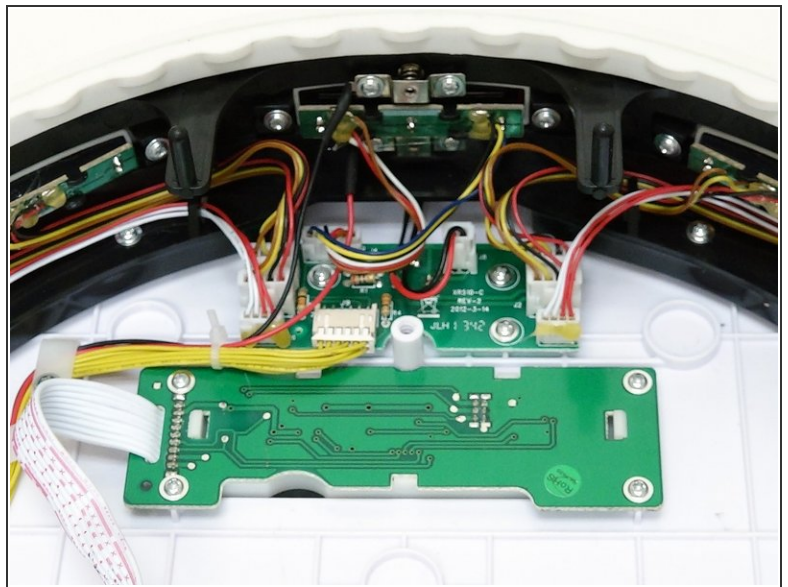
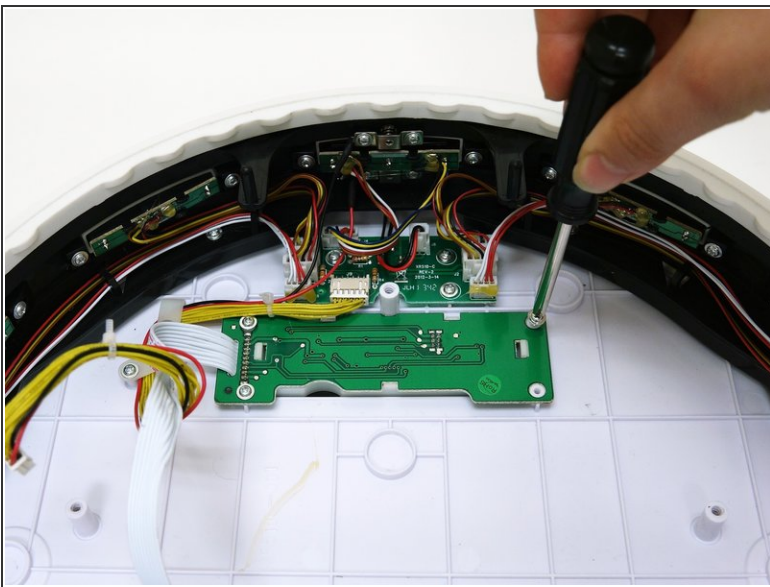
- Detach the two circuit plugs connecting bObi's cover to the main board and the cover will be completely removed.

Step 5 — Screen



- Remove the four screws that secure bObi's screen and lift the whole piece out.
- Put the replacement screen in the open space.

Step 6



- Re-install all four screws.
- For a tutorial on closing bObi, see: [Closing bObi's Cover Post-Repair](#)

To reassemble your device, follow the guide for closing bObi, found here: [Closing bObi's Cover Post-Repair](#)