



bObi Robotic Vacuum Side Brush Motor Replacement

How to remove and replace bObi's side brush after cover disassembly.

Written By: Chelsea



INTRODUCTION

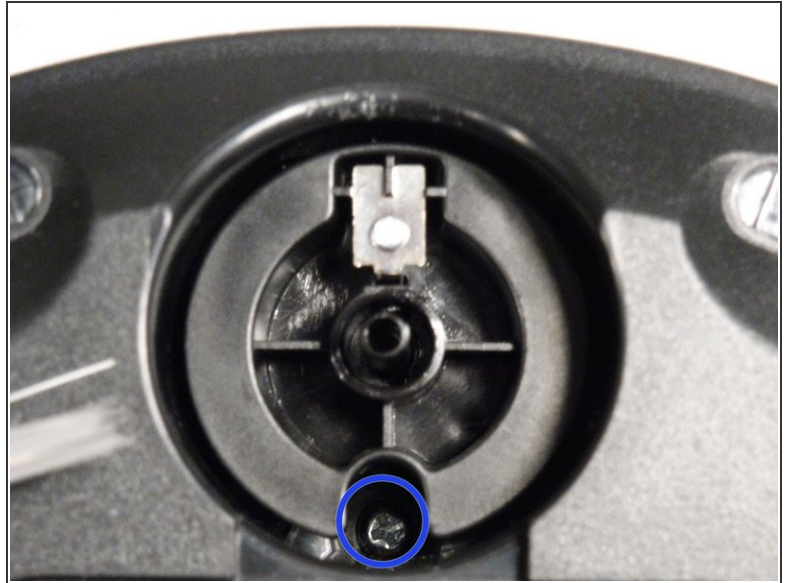
How to remove and replace bObi's side brush after cover disassembly. To close bObi when the repair is complete, follow this guide: [Closing bObi's Cover Post-Repair](#)



PARTS:

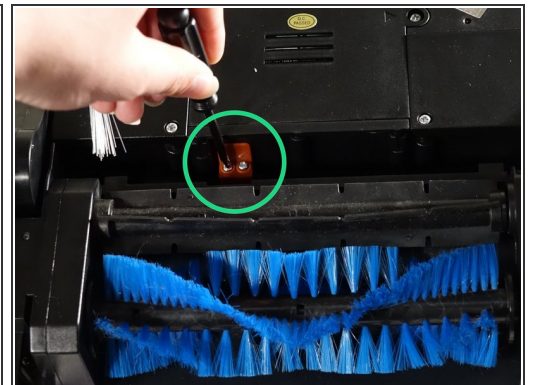
- [bObi UV lamp](#) (1)
-

Step 1 — Top Cover



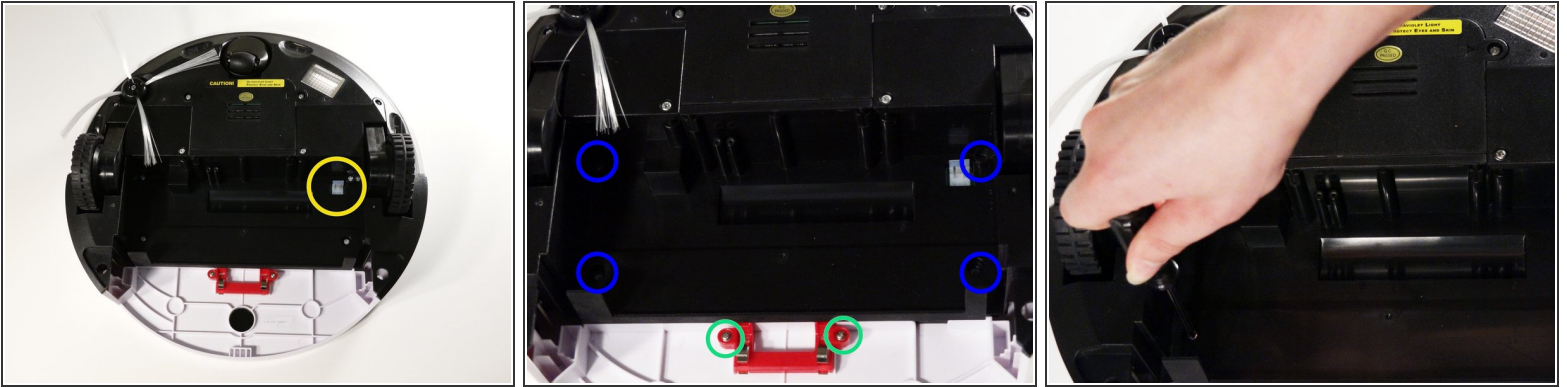
- Remove bObi's front wheel to access one of the screws holding bObi together.
- i* Make sure the wheel is turned closer to bObi's front touch sensors. Use your screwdriver for leverage, and the wheel will pop up and out.
- Uninstall the larger screw that sits deeper in the wheel compartment.

Step 2



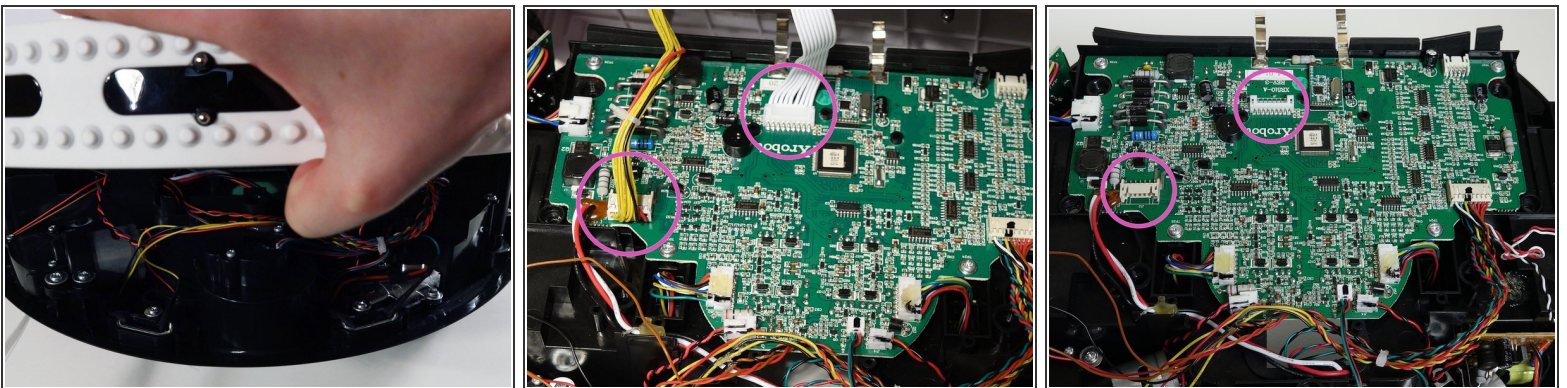
- Remove bObi's dustbin.
- Uninstall the 2 screws close to the bin and 2 smaller screws above her main brushes.

Step 3



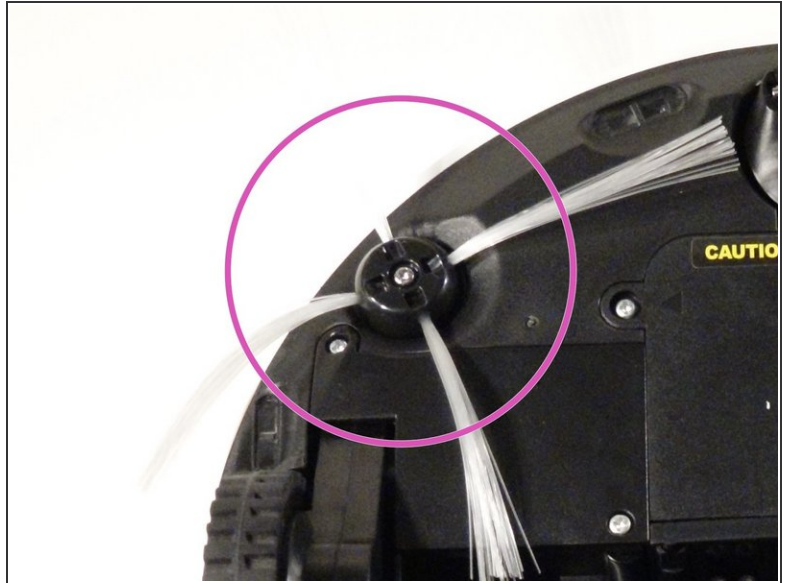
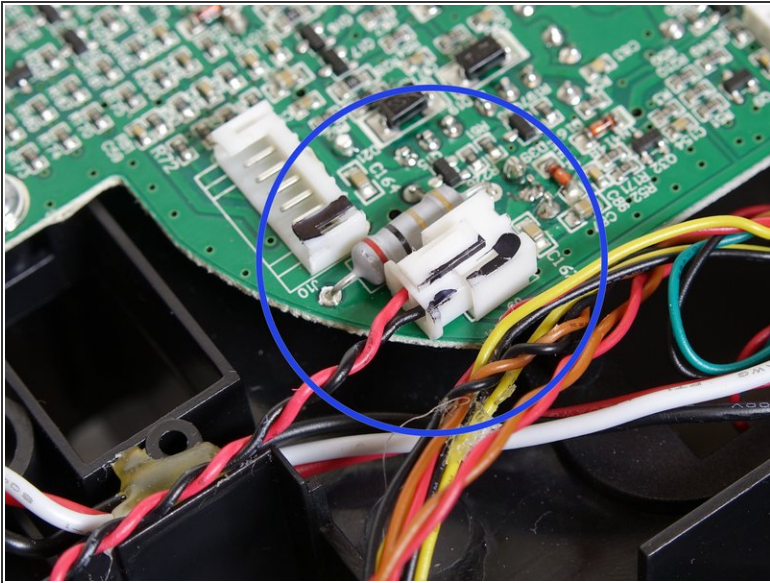
- Lift the brush holder. To detach completely, unplug it from bObi.
- Remove the two screws on the dustbin contact point holder inside bObi.
- There are 4 screws beneath the main brushes. Uninstall these, and open bObi up to expose her main circuit board.

Step 4



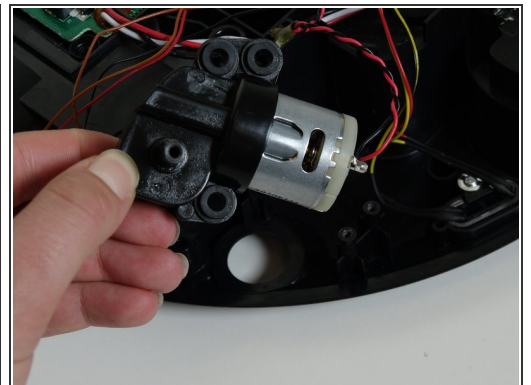
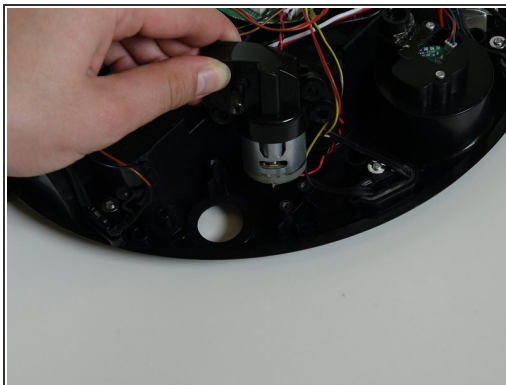
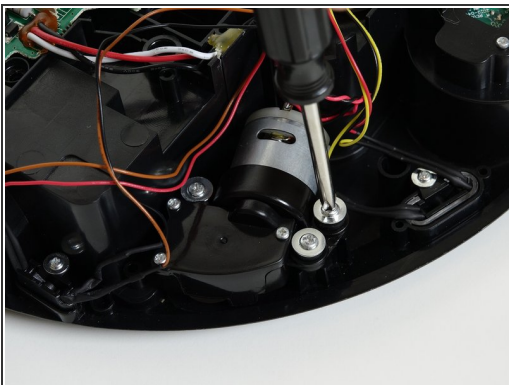
- Detach the two circuit plugs connecting bObi's cover to the main board and the cover will be completely removed.

Step 5 — Side Brush Motor



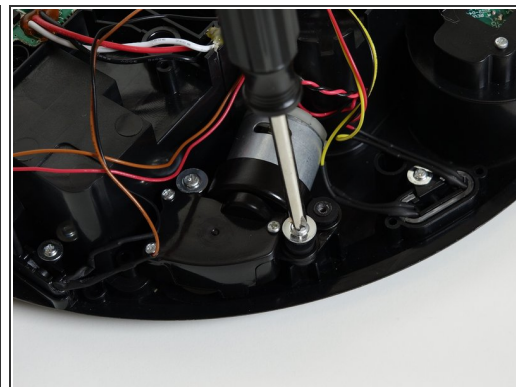
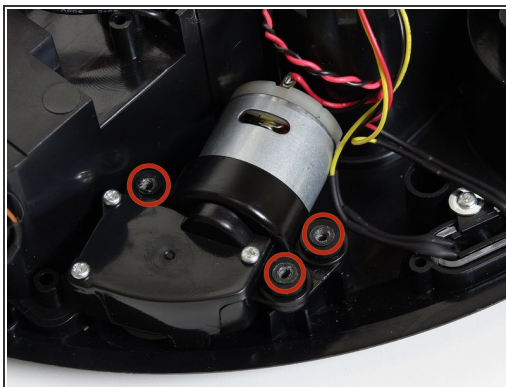
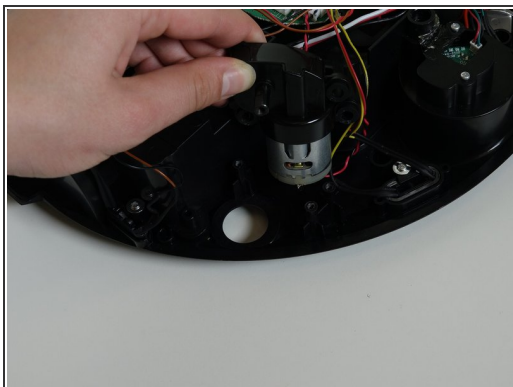
- The side brush motor is attached to the circuit board by one red and black twisted wire. Push down on the small white tab and pull to unplug it from the main board.
- If there is glue holding it on bObi, use your screwdriver to break it off.
- Remember to remove the screw and brush before trying to lift the motor out of bObi.

Step 6



- Uninstall the three screws holding the motor on bObi, then lift it straight up.

Step 7



- Line up the motor with bObi's screw posts, and lower it in place.
- Install the three screws.
- Finish your repair by closing bObi. For detailed instructions, refer to: [Closing bObi's Cover Post-Repair](#)

To close bObi when the repair is complete, follow this guide: [Closing bObi's Cover Post-Repair](#)