



bObi Robotic Vacuum Touch Sensors Replacement

Directions for opening bObi and removing the touch sensor strip under the bumper pads.

Written By: Chelsea



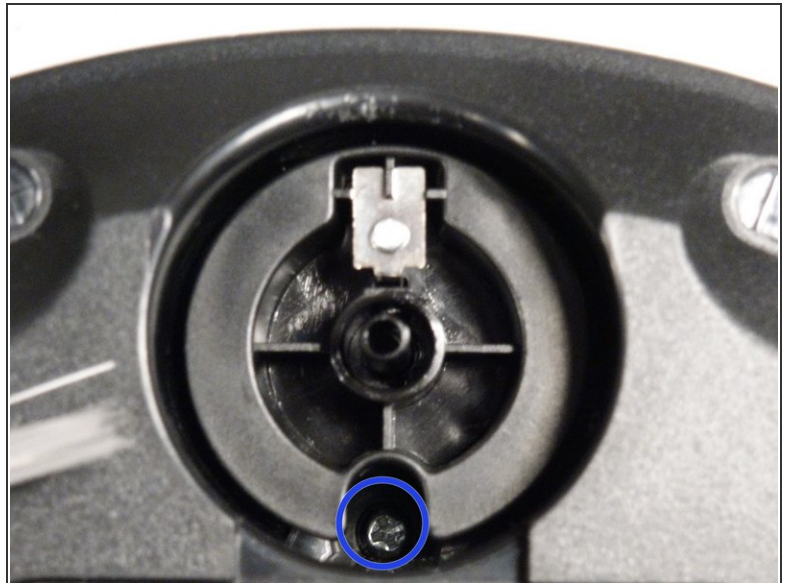
INTRODUCTION

Directions for opening bObi and removing the touch sensor strip under the bumper pads. For help closing bObi, see [Closing bObi's Cover Post-Repair](#)

TOOLS:

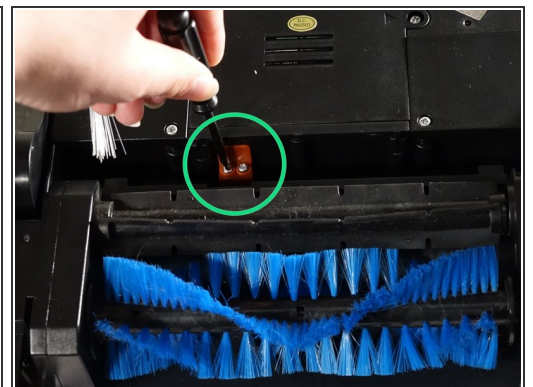
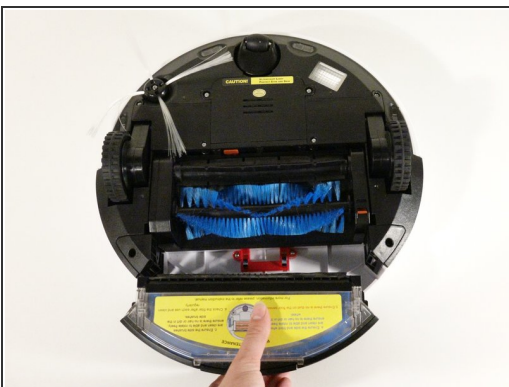
- [Phillips #2 Screwdriver](#) (1)
-

Step 1 — Top Cover



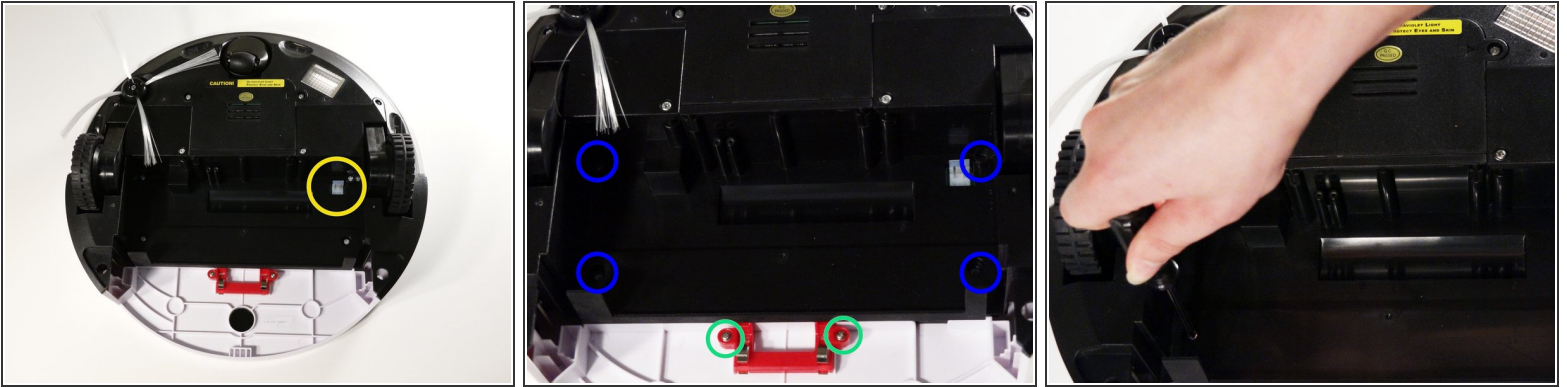
- Remove bObi's front wheel to access one of the screws holding bObi together.
- i* Make sure the wheel is turned closer to bObi's front touch sensors. Use your screwdriver for leverage, and the wheel will pop up and out.
- Uninstall the larger screw that sits deeper in the wheel compartment.

Step 2



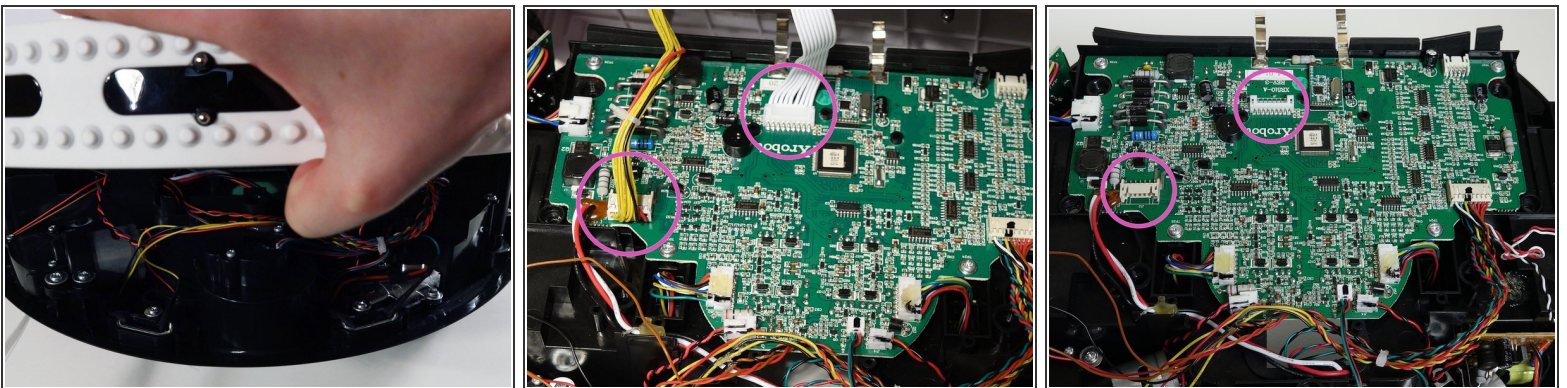
- Remove bObi's dustbin.
- Uninstall the 2 screws close to the bin and 2 smaller screws above her main brushes.

Step 3



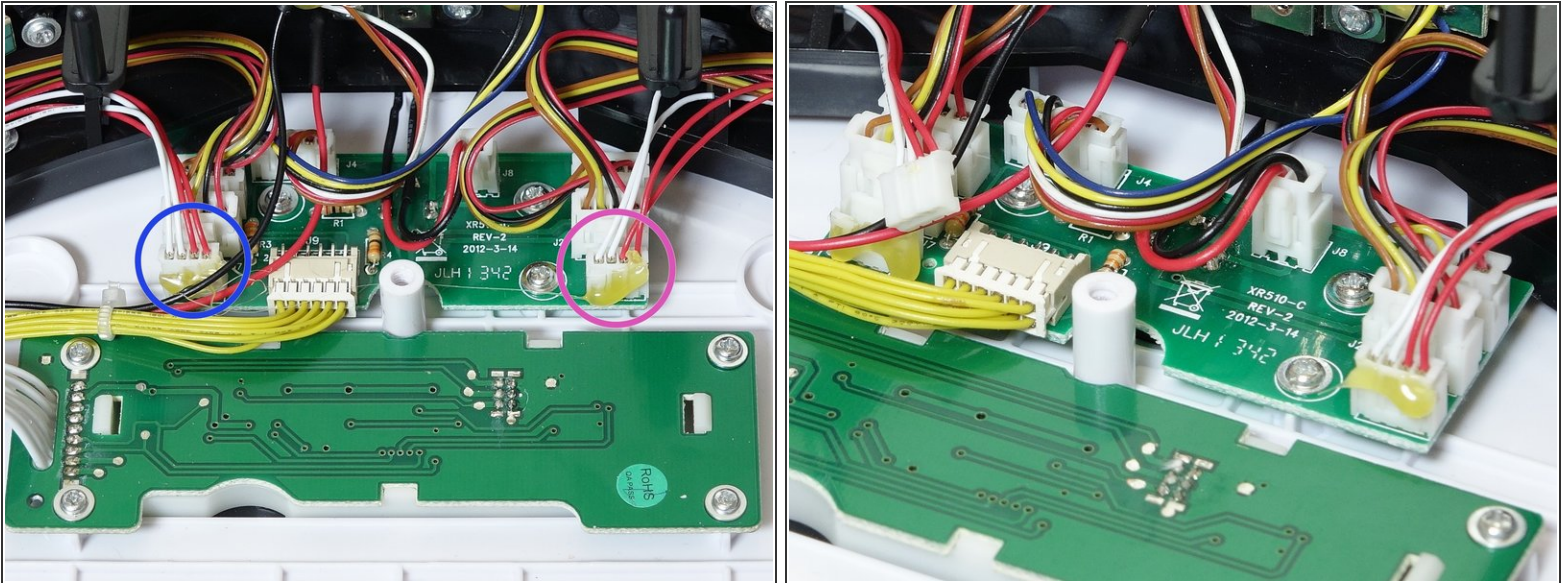
- Lift the brush holder. To detach completely, unplug it from bObi.
- Remove the two screws on the dustbin contact point holder inside bObi.
- There are 4 screws beneath the main brushes. Uninstall these, and open bObi up to expose her main circuit board.

Step 4



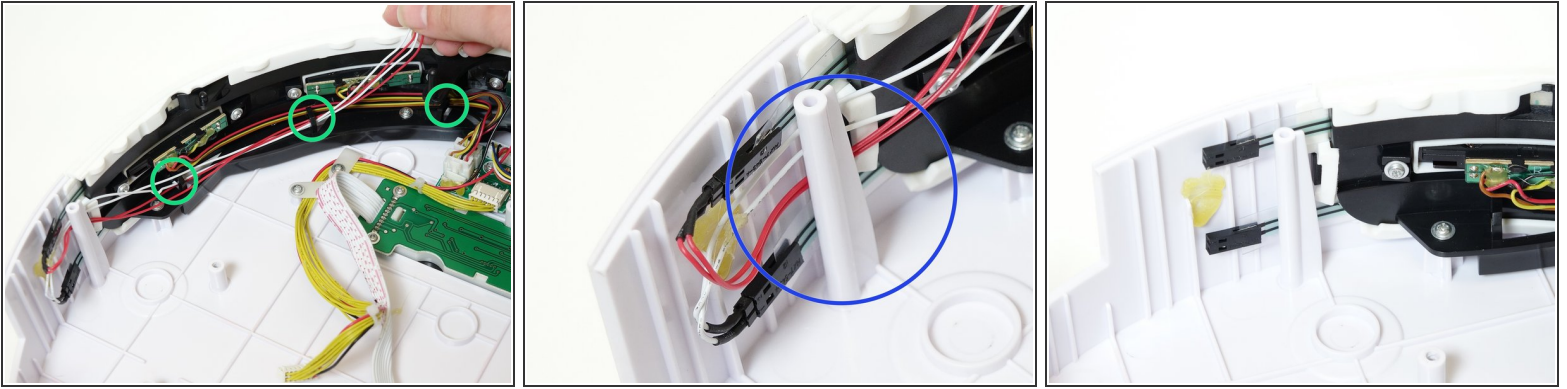
- Detach the two circuit plugs connecting bObi's cover to the main board and the cover will be completely removed.

Step 5 — Touch Sensors



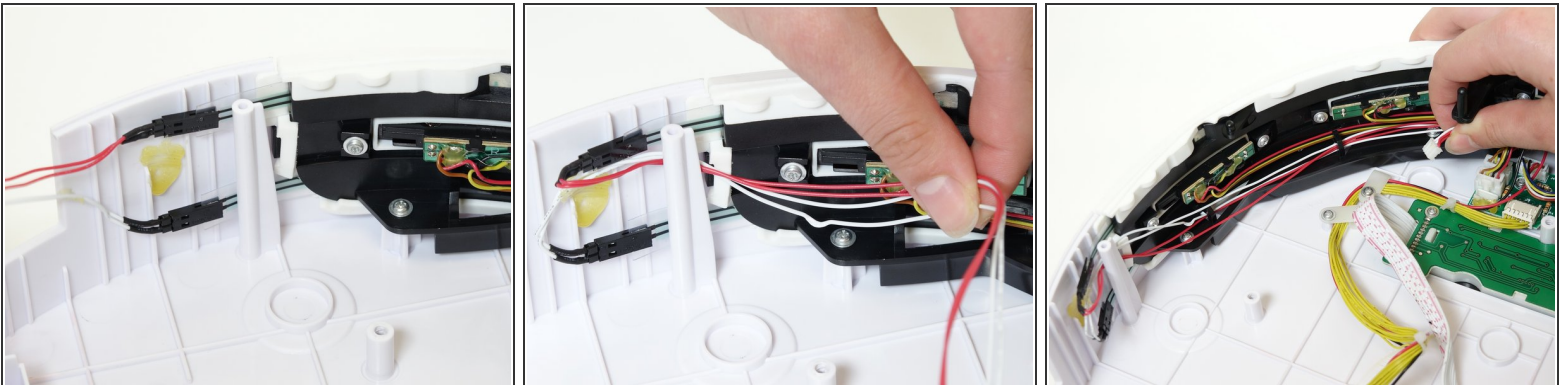
- The sensor strips underneath bObi's 80 exterior touch sensors are attached to the cover circuit board by two wires, one red one white.
- The circuit plug on the left communicates with bObi's right half of touch sensors.
- The plug on the right controls bObi's left half of touch sensors.
- Remove the appropriate touch sensor's circuit plug from the cover's circuit board.

Step 6



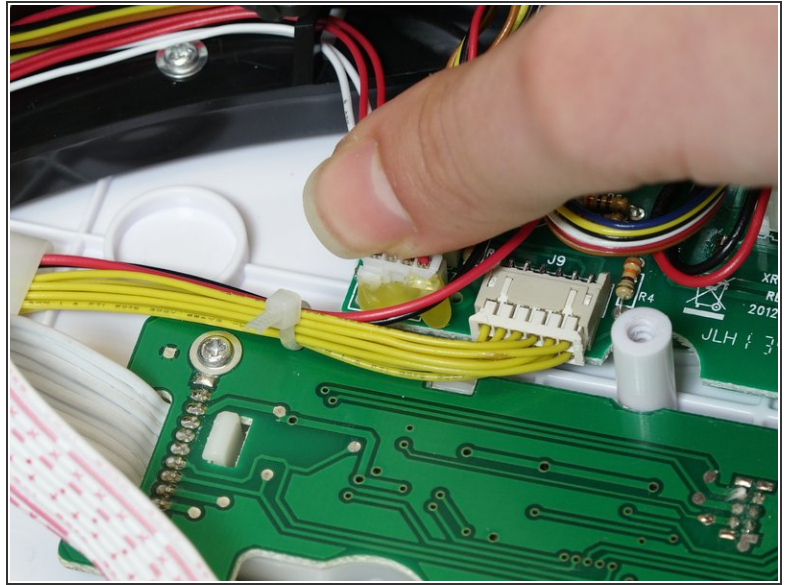
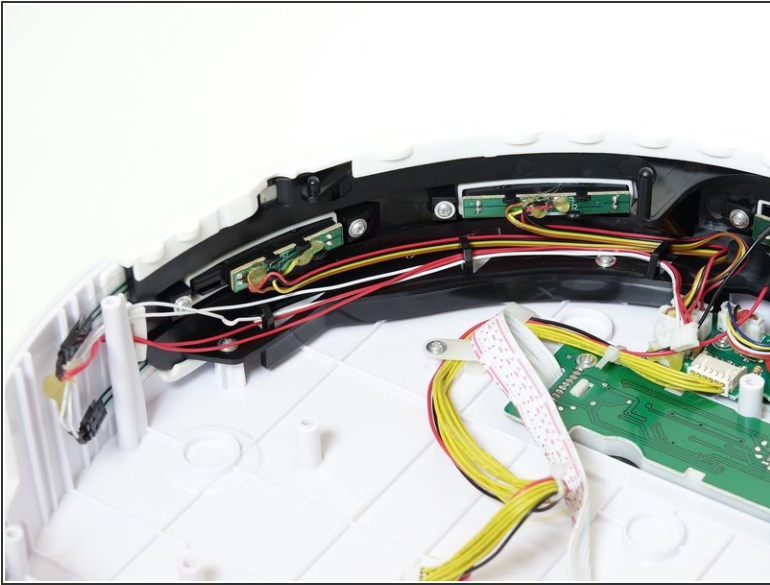
- Feed both wires towards the end of the bumper.
- Continue along the inside edge of the bumper until the wires are unhooked from each holder.
- Then, pull both out from the post at the bumper's edge.
- Pull each wire to the side to disconnect it from the touch sensor adapter.

Step 7



- Plug in the white wire to the bottom touch strip connector, and the red one on top.
- Tuck the wires behind the white post at the end of the bumper. Then, feed them back through the hooks.

Step 8



- Firmly press the circuit plug for the replacement sensor in to the open space.
- To put bObi back together, follow the steps in the reassembly guide: [Closing bObi's Cover Post-Repair](#)

For instructions on how to reassemble bObi's cover, check out the guide [Closing bObi's Cover Post-Repair](#)