



# bObsweep Pethair LCD Screen Replacement

How to replace the cover screen for a bObsweep Pethair robotic vacuum.

Written By: Tatiana



## INTRODUCTION

A simple fix for any screen issues on a bObsweep Pethair.

Video instructions:

[video: <https://www.youtube.com/watch?v=diRTaPyNzs4>]



### TOOLS:

- [Phillips #2 Screwdriver](#) (1)



### PARTS:

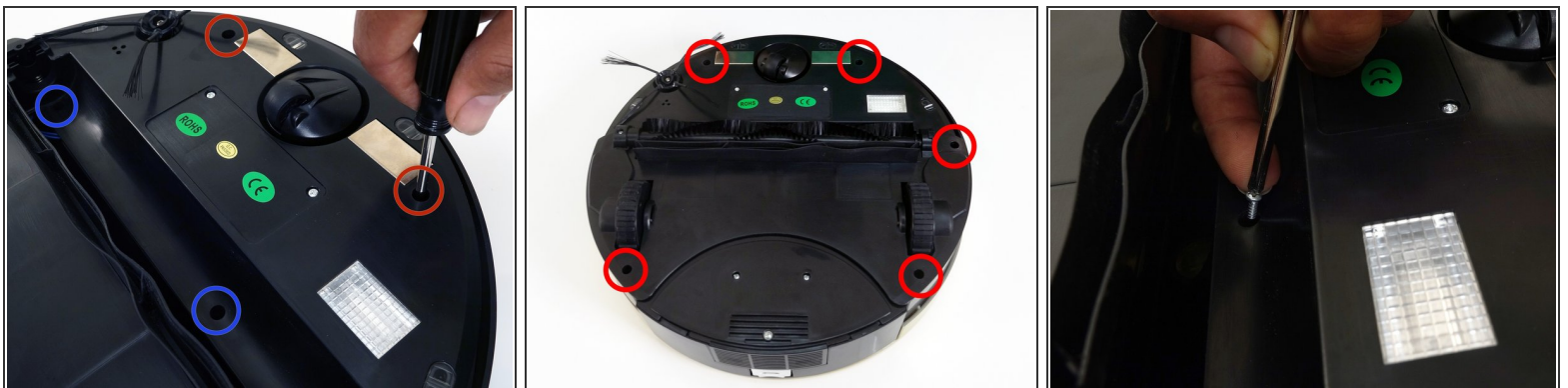
- [Replacement bObsweep Pethair Screen](#) (1)

## Step 1 — bObsweep's cover



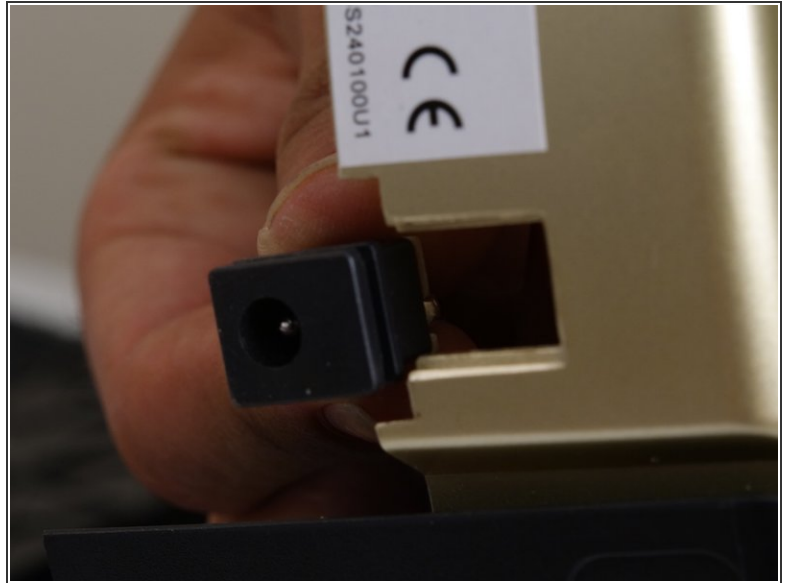
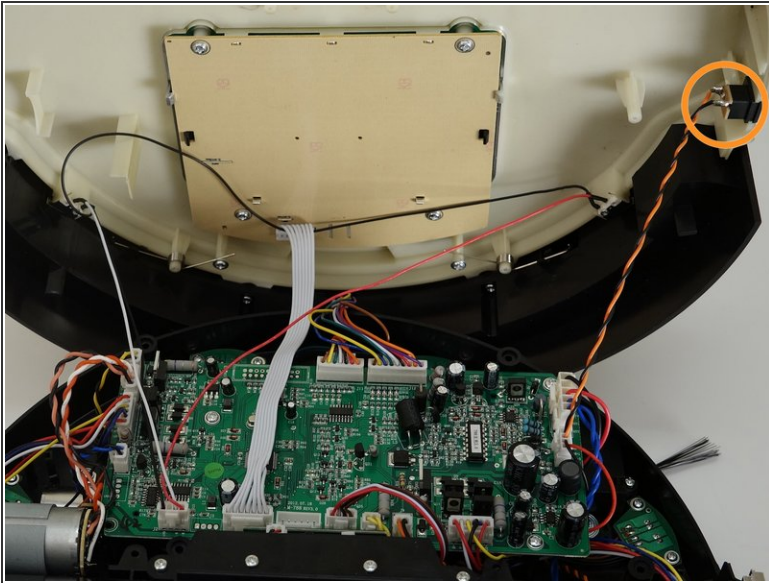
- Flip Bob over and remove the 7 screws around which hold the cover together.
  - Remove the main brush. Unscrew the holder, and lift the brush out. Reminder: Keep this screw separate from the others so you can use it later to reinstall.
- ⓘ Depending on your model, there may be only 6 screws installed on bObsweep.

## Step 2



- There are two screw holes inside the brush compartment: one in the centre, one on the left end. Remove both and keep aside for reassembly.
- There are five more screws around bObsweep's edges. Two are installed at the top and bottom, and one on the right end of the main brush.

### Step 3



- Flip bOb back over so you can see the screen. Lift the cover up to reveal bObsweep's main board.
- Detach the power inlet from the cover. Grip and slide it out.

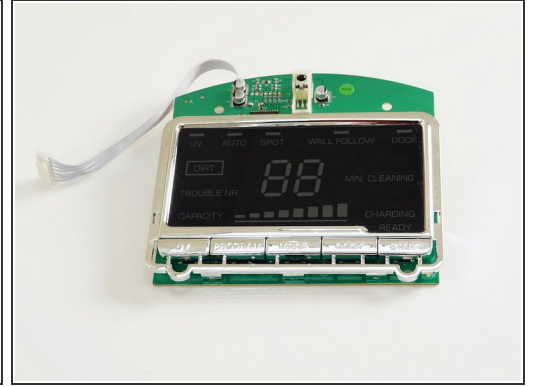
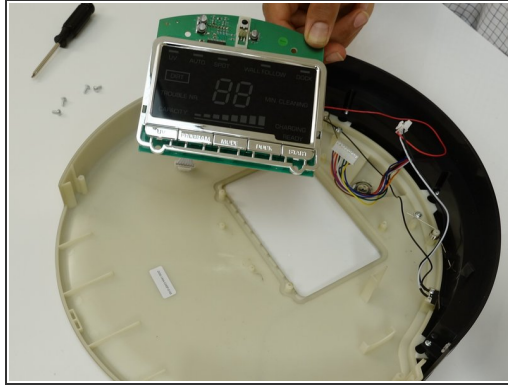
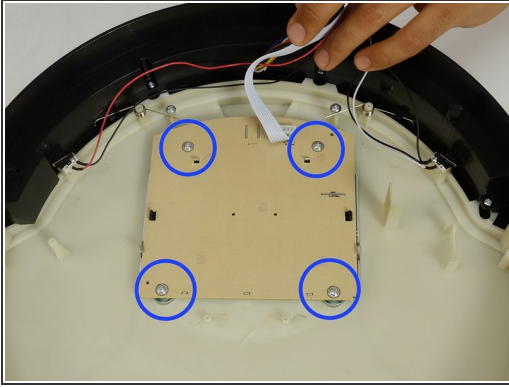


## Step 4



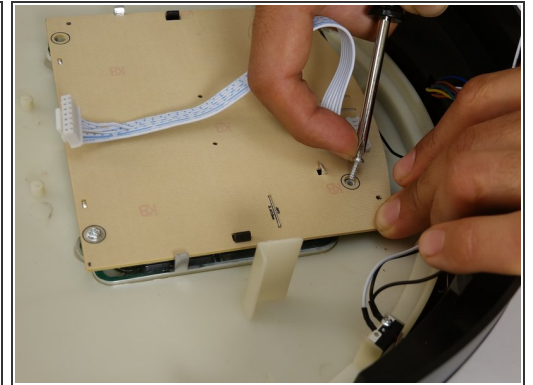
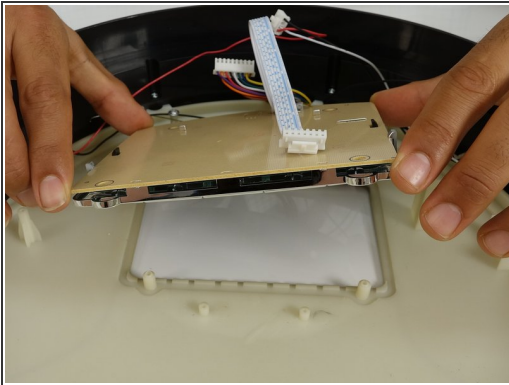
- Remove three circuit plugs from the motherboard. Pinch the small white tab on the side of each circuit plug and pull straight up to release each from the motherboard.
  - 1. On the bottom left corner: a small connector with red, black and white wires.
  - 2. One thick white wire that attaches on the right side of the previous connector.
  - 3. On the top edge of bOb's motherboard: a wide multicoloured connector.
- Place the cover aside and begin your repair.

## Step 5 — bObsweep Pethair's LCD Screen



- Remove the four screws holding the screen in place
- Lift the screen up and it will detach from the cover.

## Step 6



- The screen and cover buttons will lift out together, leaving an open space for your replacement parts to fit into.
- If you remove the infrared sensor, replace it in its space on the new cover so the black side will be on bOb's outside.
- Then, install all four screws for the LCD display. To finish off the repair, simply follow: [Closing bObsweep's cover after repair](#)

To reassemble your device, follow the [guide for closing bObsweep after repair](#).