



# bObsweep Robotic Vacuum Battery Replacement

Four simple steps for uninstalling and replacing bObsweep's battery.

Written By: Tatiana



## INTRODUCTION

The guide to one of bObsweep's simplest fixes: replacement of the vacuum's battery.

Video version:

[video: <https://www.youtube.com/watch?v=E42dgFpY5C0>]



### TOOLS:

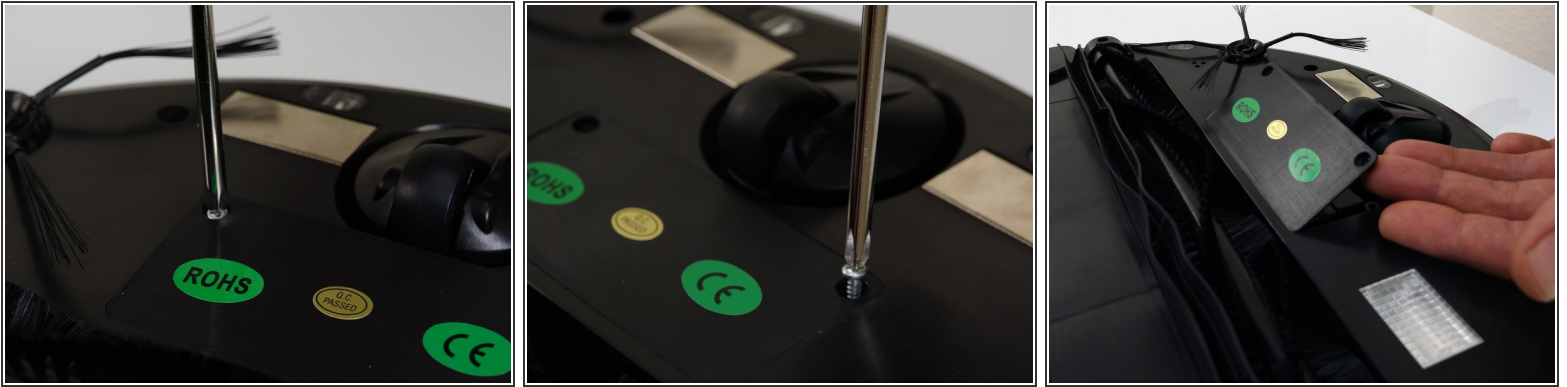
- [Phillips #2 Screwdriver](#) (1)



### PARTS:

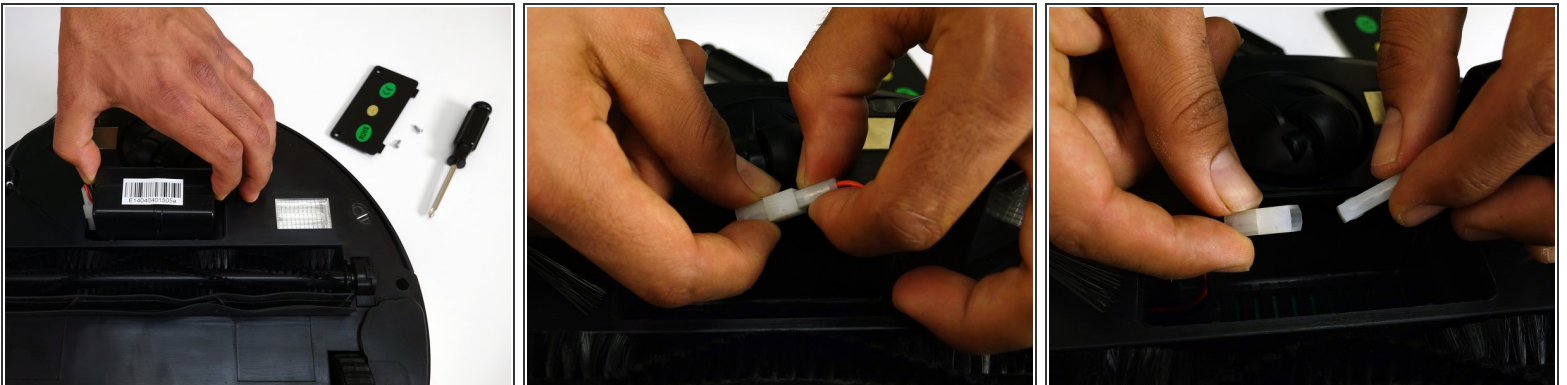
- [bObsweep battery](#) (1)

## Step 1 — Battery



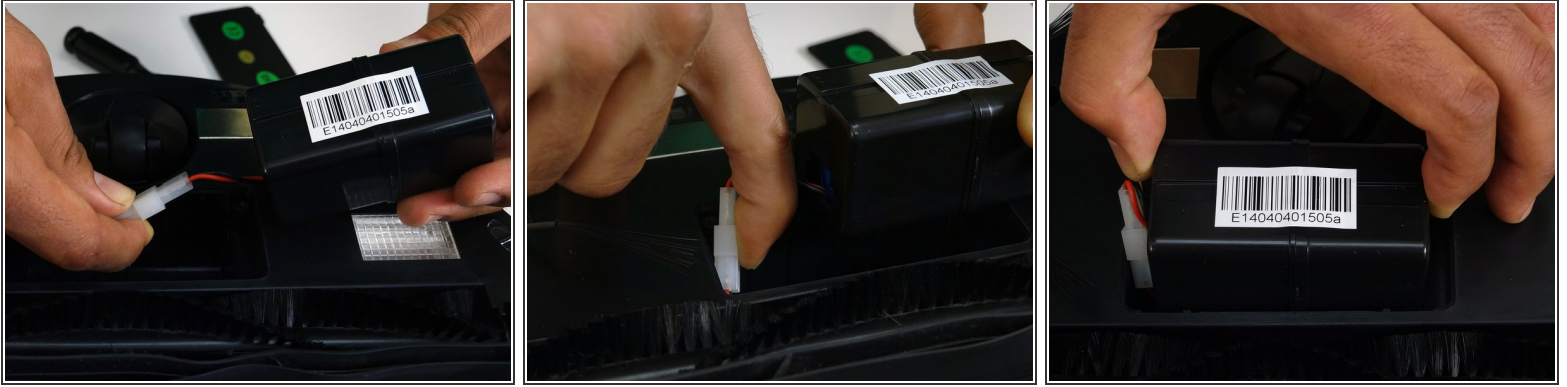
- Unscrew the battery's cover plate on bObsweep's underside, above the main brush.
- Lift the cover plate to expose the battery.

## Step 2



- Lift the battery up and out of its compartment.
- Using both hands, pinch the plastic connector where the battery's wiring attaches to bObsweep and pull apart to disconnect.

## Step 3



- Connect the wires of the new battery. Push together tightly and it will lock in place.
- Tuck the wires down inside the battery compartment on the right side.
- Lower the battery down into bObsweep with the barcode facing up.

## Step 4



- Lower the cover down so it lies flat and the screw holes of the cover line up with those on bObsweep.
- Reinstall the two screws removed in step one to secure the cover and battery in place.

A quick fix for bObsweep's power supply. Changing an old lithium ion battery for a new one ensures the vacuum will work longer with fewer charging breaks.