



bypass broken USB on GARMIN Gps

if you cannot use or charge your garmin gps due to broken mini usb port on back, this will enable you to use your gps again.

Written By: doggy2





TOOLS:

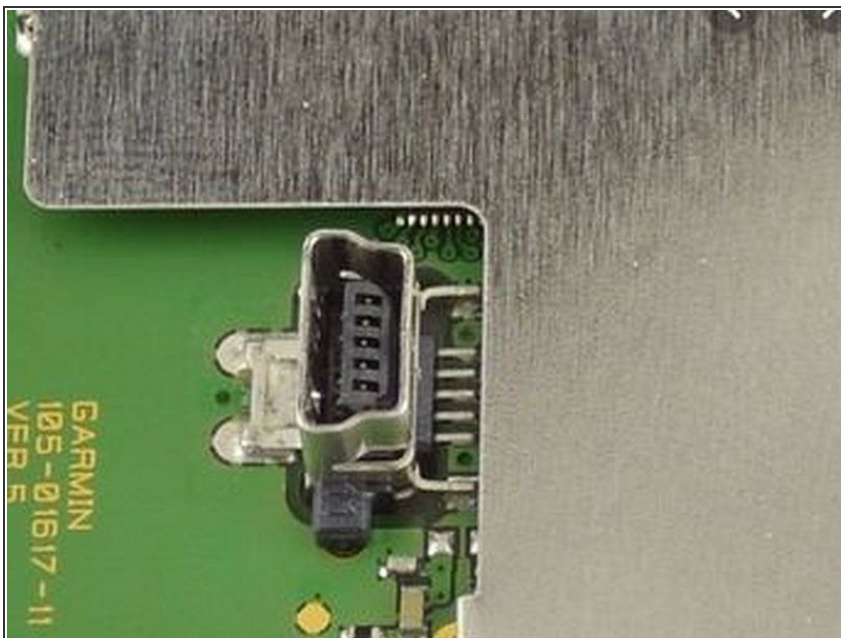
- mini torx screwdriver, electrical tape, knife, (1)
-

Step 1 — Fix broken Garmin charging usb port



- steps follow below

Step 2



- The Garmin mini usb port seems to be designed to break easily forcing you to buy a new GPS. This is how to bypass a broken usb port on the back of garmin GPS receivers. It will leave you with a GPS which works with the car adapter only.

Step 3



- The battery must be removed for safety since the yellow wire which sends a safety signal to the charging electronics about the battery heat levels will be bypassed. We will be powering the unit directly from the Garmin Car Charger (others may not work since Garmin has special circuitry in its chargers).

Step 4



- # using a mini torx screwdriver, remove all the screws and separate the front and back of the case.
if the usb connector is still on the circuit board, carefully twist it off and discard # cut the car charger cable a few cm from the usb connector and strip the two wires back 0.5 cm. the middle wire is positive, the outer mesh sheath, negative.

Step 5



- fold open the two halves carefully. Try NOT to pull out any ribbon cables. If you do pull one out, open the tiny folding clamp and carefully put it back in

Step 6



- make the usb port hole in the back plastic larger and feed charger cable in # pull/disconnect the white battery connector from the circuit board # pry the glued in place battery loose with a plastic (not metal) spudger, guitar pick, or similar. Remove battery.

Step 7



- DO NOT CUT battery wires AT THE SAME TIME, they will short out and battery may explode. ONE AT A TIME, cut the battery wires at the battery leaving a few cm wires on the white connector. strip the black and red ends .5cm, leave yellow wire unstripped

Step 8



- solder or twist the positive (inner) cable to the red wire and negative(mesh) to the black wire.insulate the connections using heat shrink tubing or electrical tape

Step 9



- wrap the cable with a lump of tape so it can't be pulled out of the hole in the case.put case carefully back together.

Step 10



- plug car adapter into cig. lighter and turn on GPS.you now have a working GPS again.you will need to update maps using the SD card since you cant communicate using a PC any more.

Step 11



- == Tips == * free updated maps are available at openstreetmap. <http://garmin.openstreetmap.nl/> ==
Warnings == * make sure you dont cut battery wires at the same time, the wire cutters will short out the battery and it may explode or catch fire. wires must be cut indicidually

To reassemble your device, follow these instructions in reverse order.