



canon PowerShot SX150 IS Teardown

whats inside a camera? that's what i asked myself so in this Teardown we see just that;to understand this device better

Written By: Iris Jimenez



INTRODUCTION

Here we have a *canon PowerShot SX150 IS* a camera used by many, but also many don't know how does it function here we see the interior of the camera to show how does this device operate when taking photos.

TOOLS:

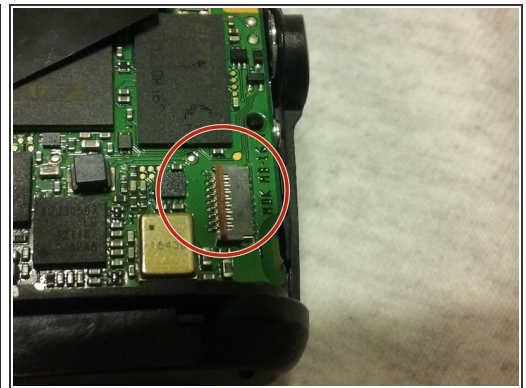
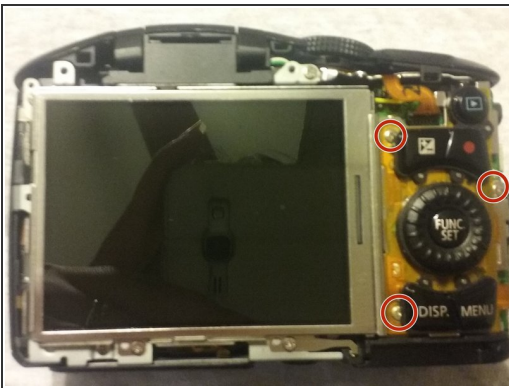
- [Essential Electronics Toolkit](#) (1)
-

Step 1 — How to start



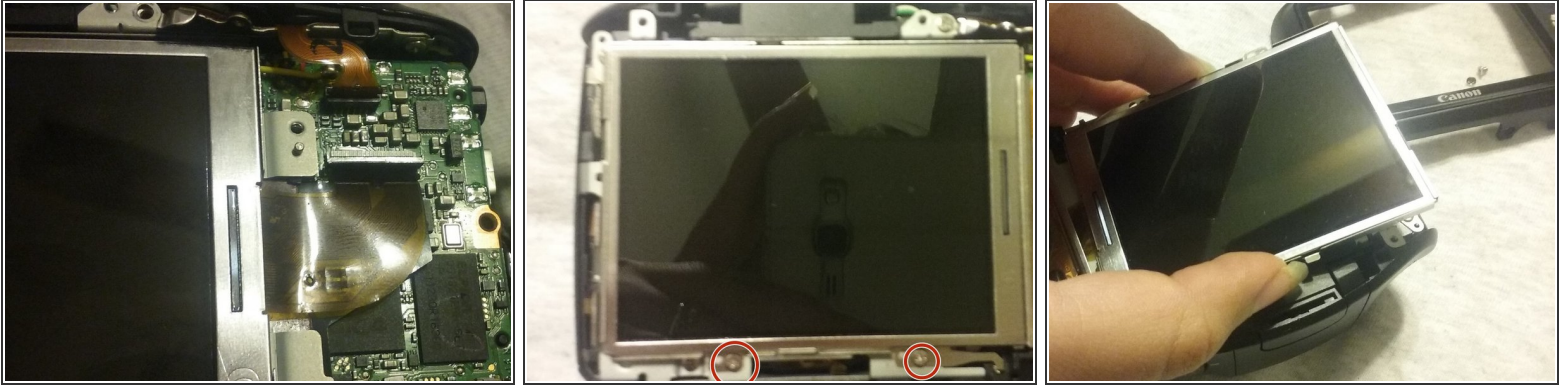
- Start by removing the screws of the back side of the camera.
- Try to remember where each screw goes keep in mind there small keep them safe
 - when removing screws make sure you remove them all if one screw is still there you may break the camera check in all sides to be sure. yes there are screws on the sides and on the bottom of the camera
- be care full when removing this item

Step 2 — Removal of an important metal



- remove the small screws that are in the sides of the buttons
- ⓘ this part of the camera is connected to the camera so **don't pull** it to harshly
- now we remove the connection between the items if lifting up a tiny lock and pulling it out carefully.

Step 3 — removing the screen



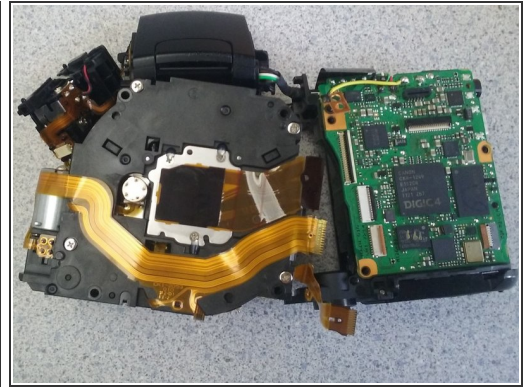
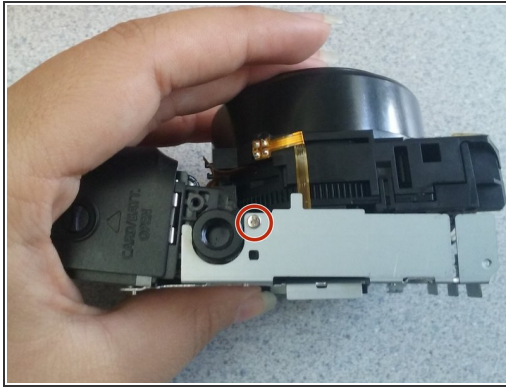
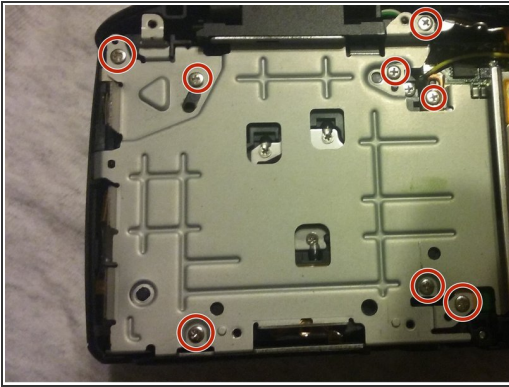
- we remove the screen by separating it's connection and remove the screws on the bottom of the screen

Step 4 — removing the front of the camera



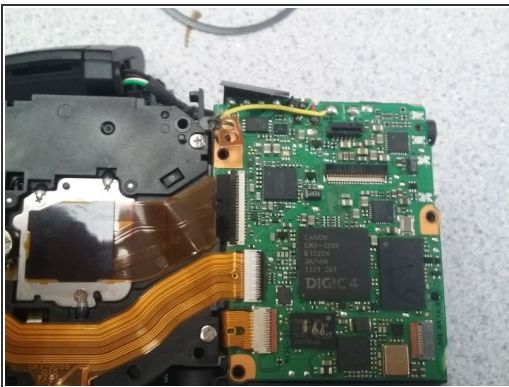
- check the bottom of the camera there will be two screws one will be visible the other one is where you insert the batteries.
- check now the sides and the front of the camera there will be more screws in where the flash is remove them, then the camera should look like the picture shown.

Step 5 — removing the item that holds it all



- there are many screws so we remove them all also we check the bottom there will be one screw we remove it as well
- ⓘ this is a very important part since this piece holds everything in place make sure you are careful with it

Step 6 — the final connections/step



- now we finally disconnect the last parts that are assemble be careful these are sensitive parts
- now we are finally done with the teardown