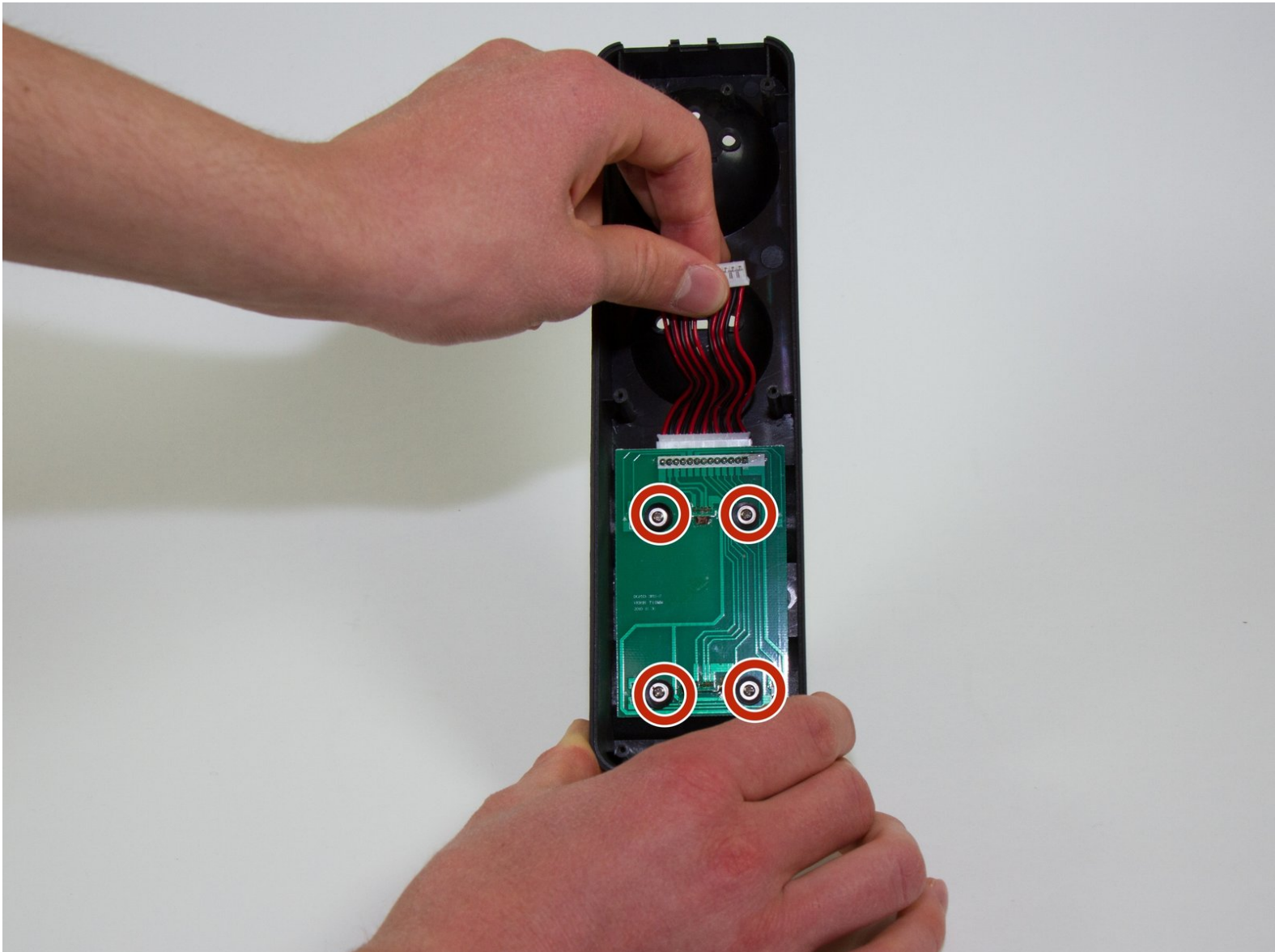




dreamGEAR Quad Dock Pro Power Board Replacement

How to replace the Power Board that charges your controllers.

Written By: Jacob



INTRODUCTION

The Power Board is the board that charges the PS Move controllers. This is how you replace it.



TOOLS:

- [Phillips #0 Screwdriver](#) (1)
 - [iFixit Opening Tools](#) (1)
-

Step 1 — Prerequisite Guide to Accessing Interior



- Remove the rubber foot pads on the bottom of the device using a plastic opening tool.

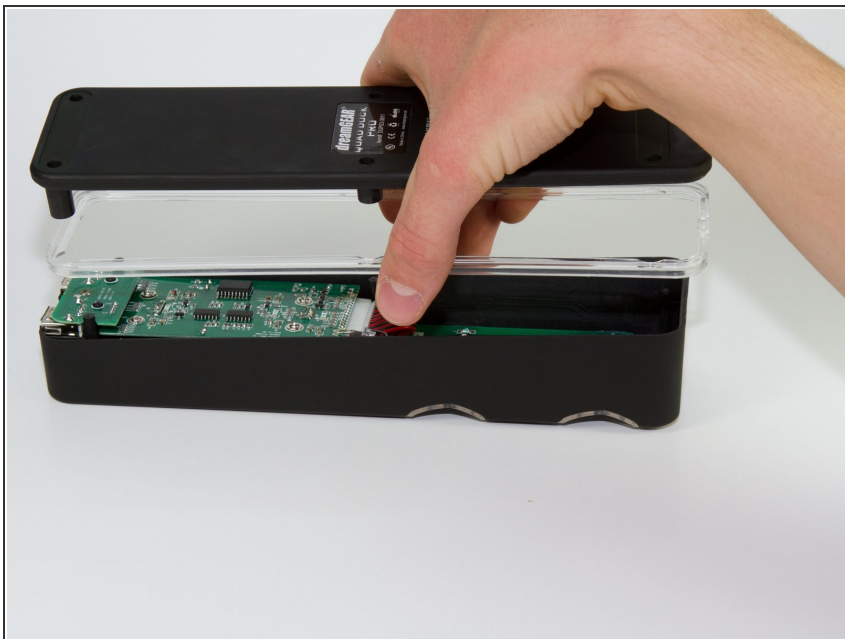
Step 2



- Remove the six 2 mm PH0 screws on the bottom of the device.

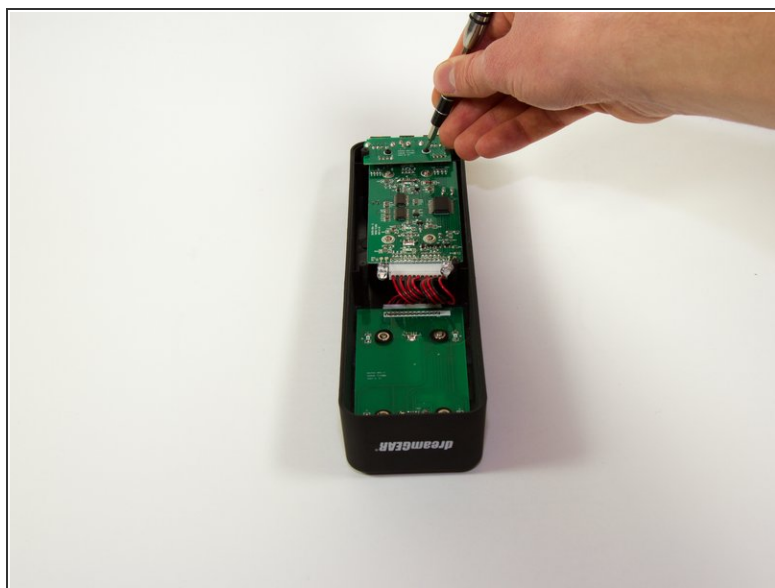
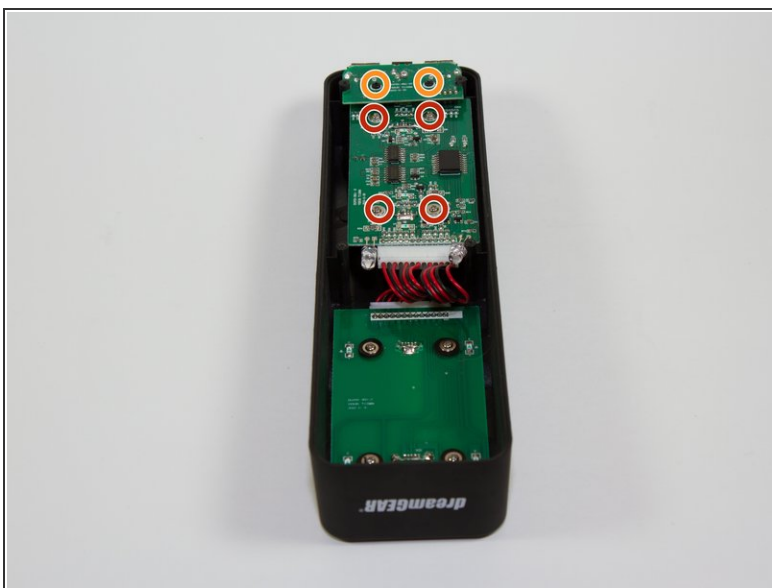
i Four of those screws are located under the foot pads.

Step 3



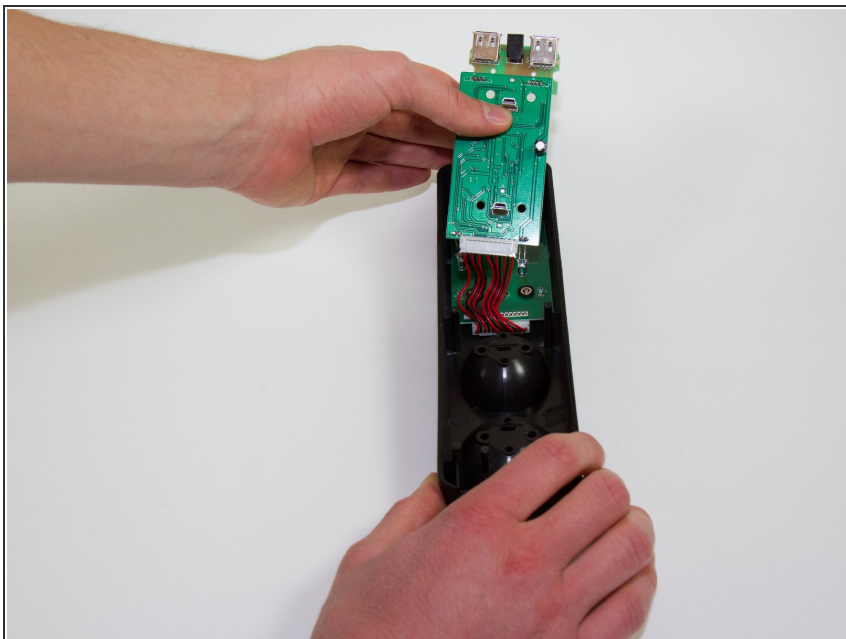
- Gently remove the bottom of the device.

Step 4 — Mother Board



- Remove the six screws holding the motherboard in. Two are 2mm PH0 screws (circled in orange), four are 1.8 mm J1 screws (circled in red).

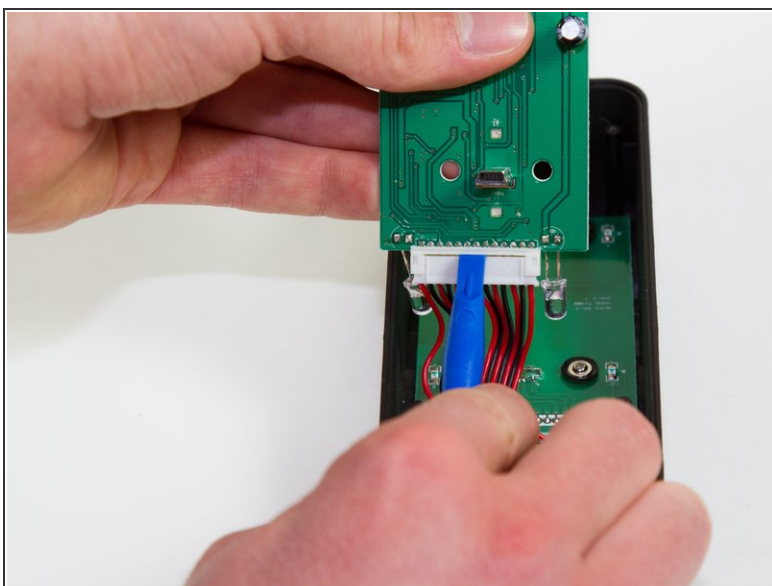
Step 5



- Gently pick up the mother board

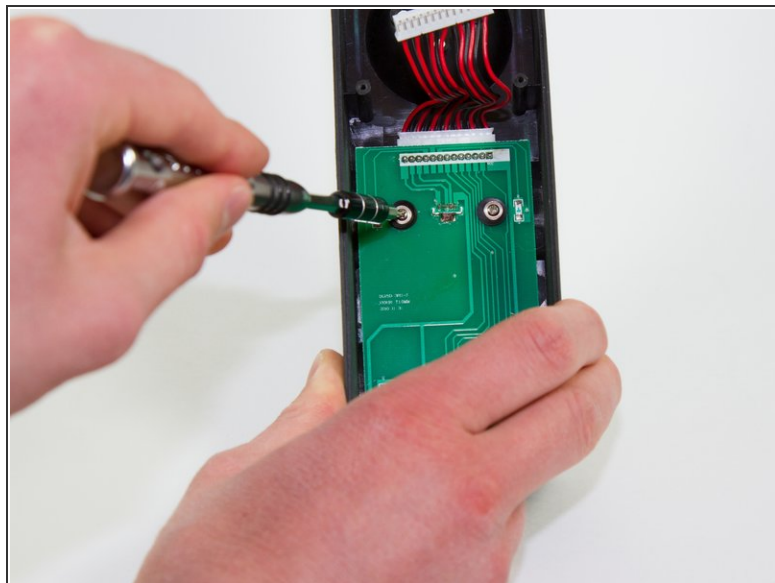
⚠ Pick the mother board straight up or you may risk damaging the mini-USB charging ports.

Step 6



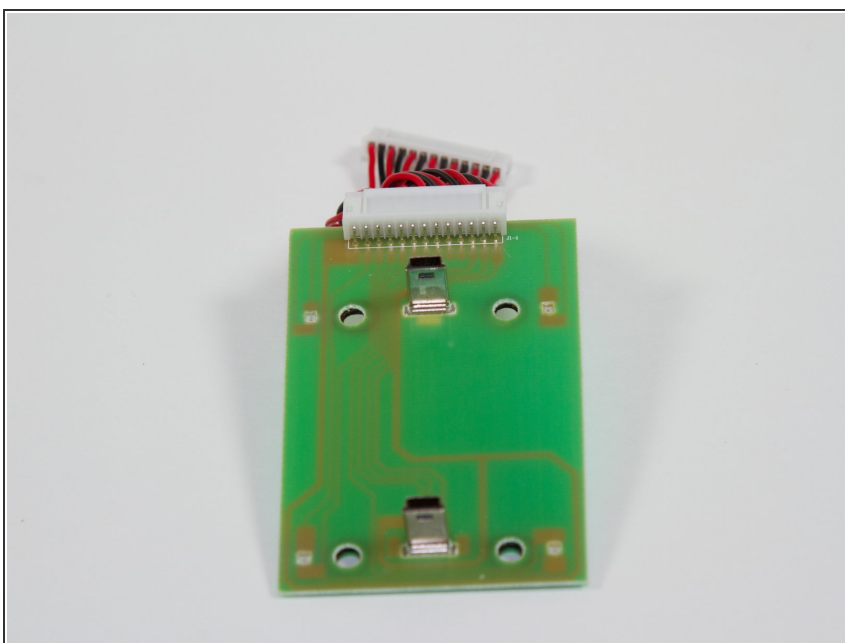
- Use a plastic opening tool or similar tool to gently pry the power ribbon cord out of its port.

Step 7 — Power Board



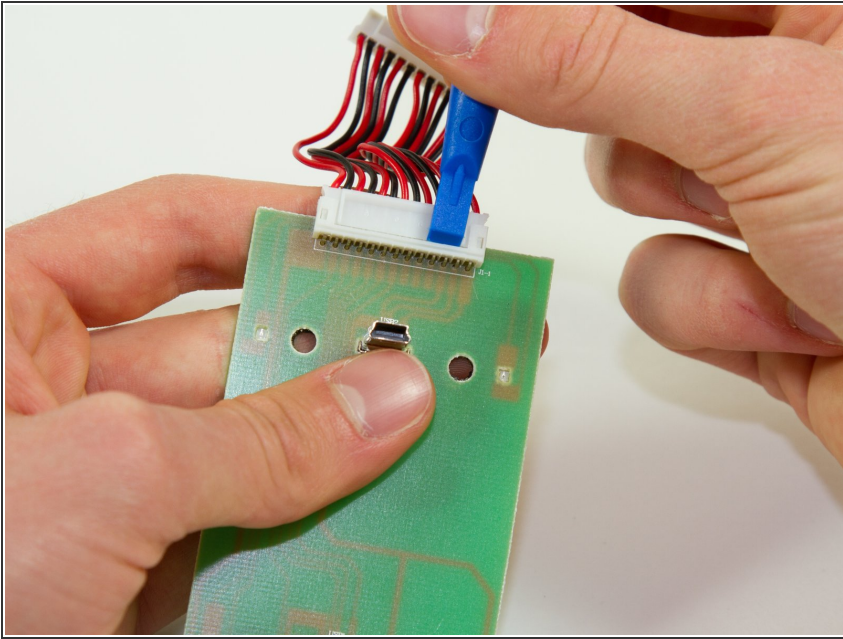
- Remove the four 1.8 mm PH0 screws that are holding the board in.
- ⓘ When you remove these screws, the plastic cups inside the PS Move stations will fall out.

Step 8



- Pick up the board.
- ⚠ Pick the board straight up, or you risk damaging the charging ports.

Step 9



- Using a plastic opening tool or a similar tool, gently pry the power ribbon cord out of its port.

To reassemble your device, follow these instructions in reverse order.