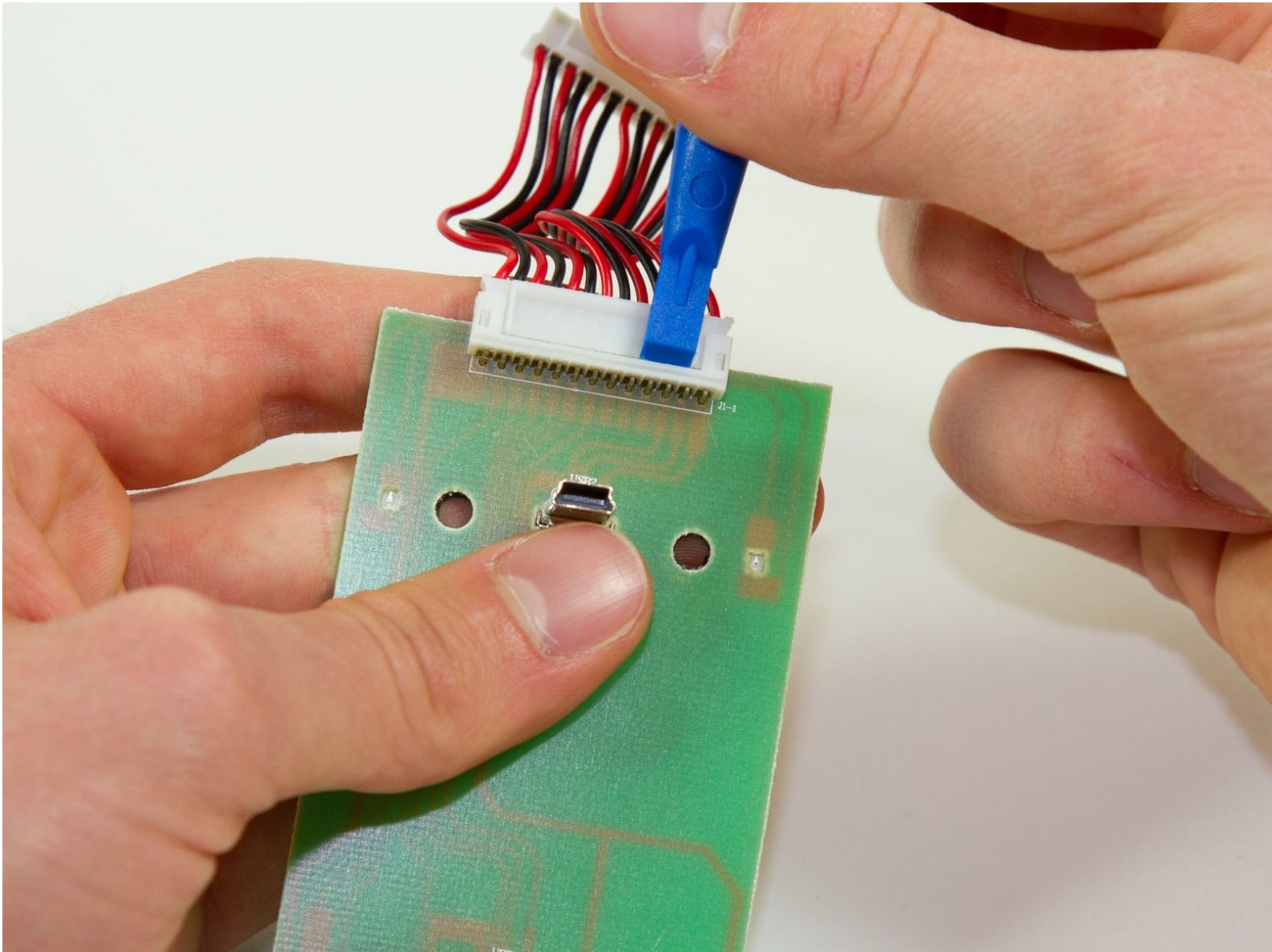




# dreamGEAR Quad Dock Pro Power Ribbon Cord Replacement

How to replace the power ribbon cord inside your Quad Dock Pro

Written By: Jacob



---

## INTRODUCTION

This is how you replace the internal ribbon power cord.



### TOOLS:

- [Phillips #0 Screwdriver](#) (1)
  - [iFixit Opening Tools](#) (1)
-

## Step 1 — Prerequisite Guide to Accessing Interior




- Remove the rubber foot pads on the bottom of the device using a plastic opening tool.

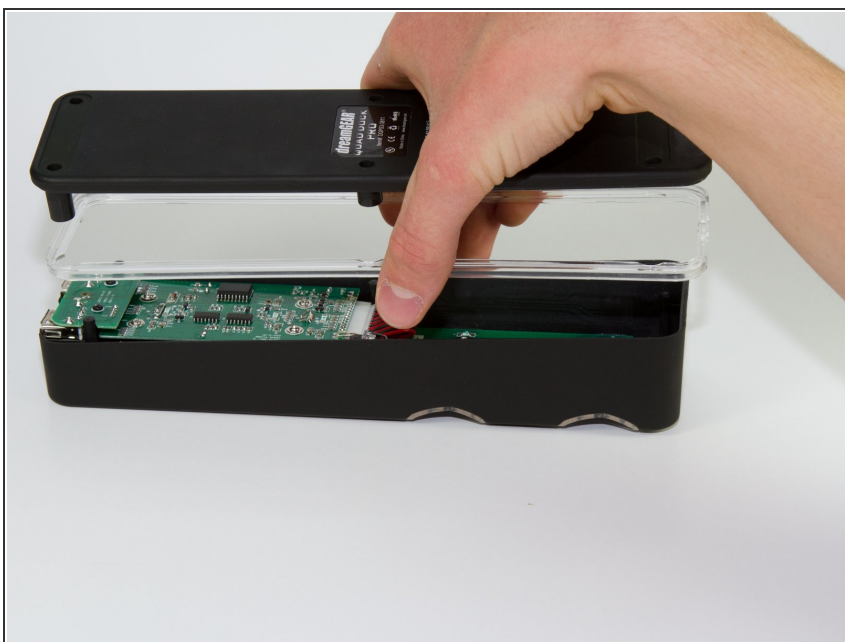
## Step 2



- Remove the six 2 mm PH0 screws on the bottom of the device.

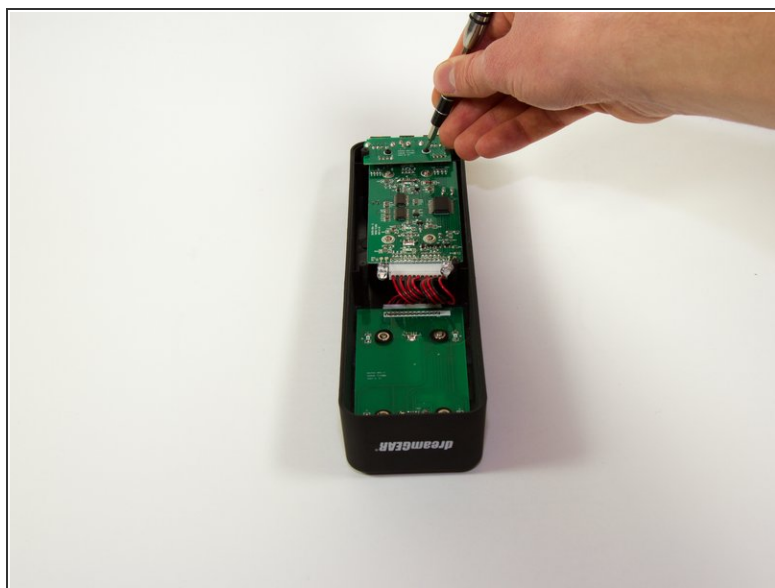
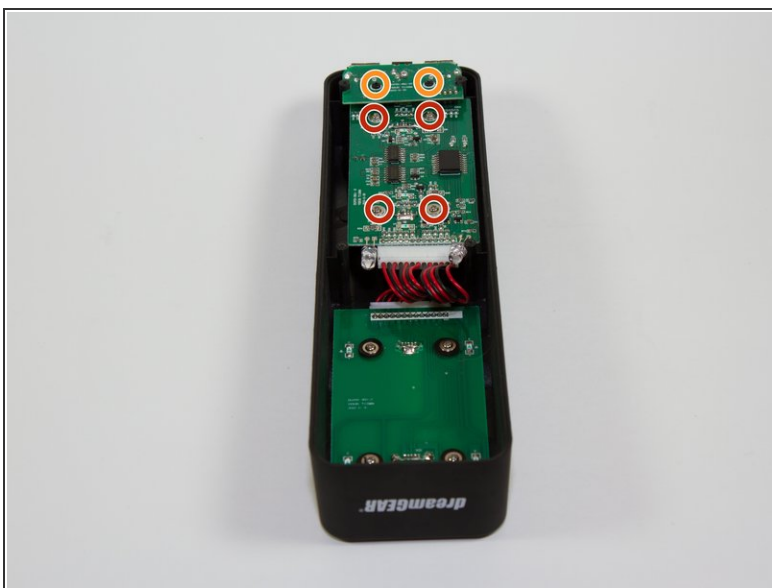
 Four of those screws are located under the foot pads.

### Step 3



- Gently remove the bottom of the device.

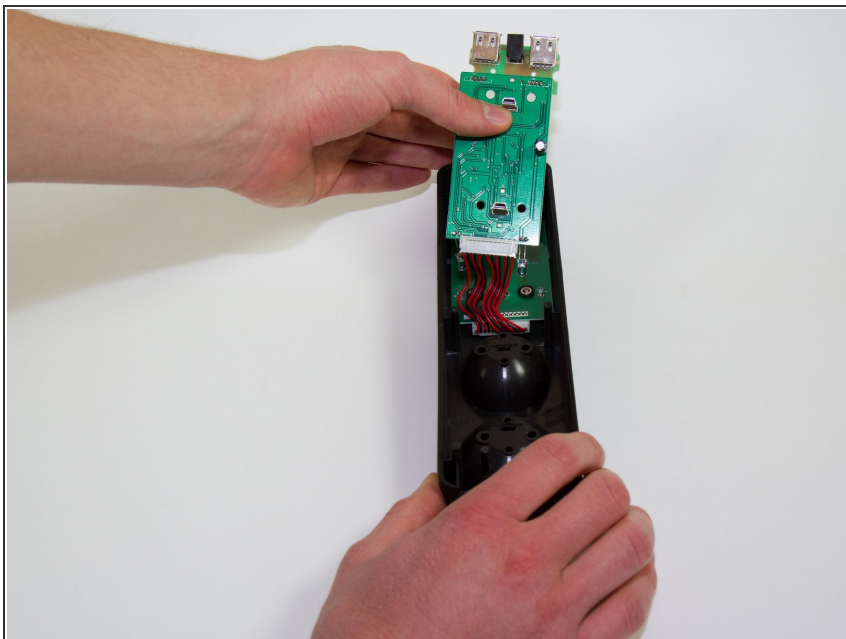
### Step 4 — Mother Board



- Remove the six screws holding the motherboard in. Two are 2mm PH0 screws (circled in orange), four are 1.8 mm J1 screws (circled in red).



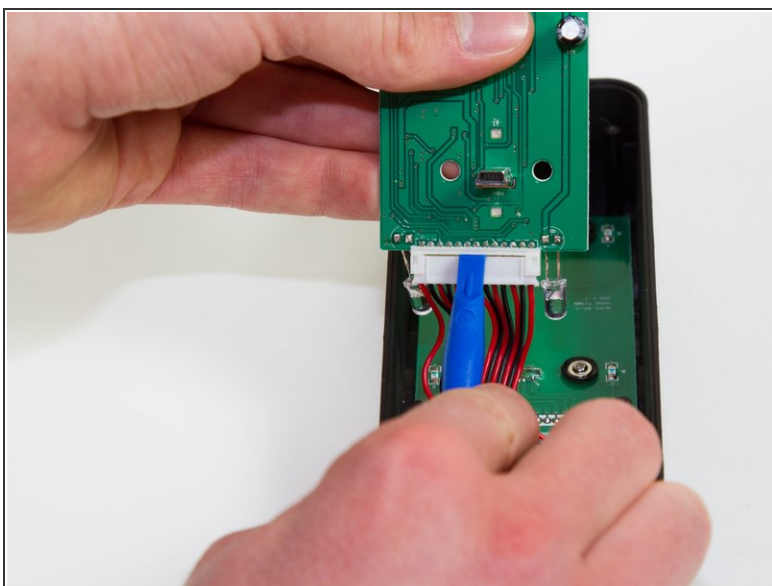
## Step 5



- Gently pick up the mother board

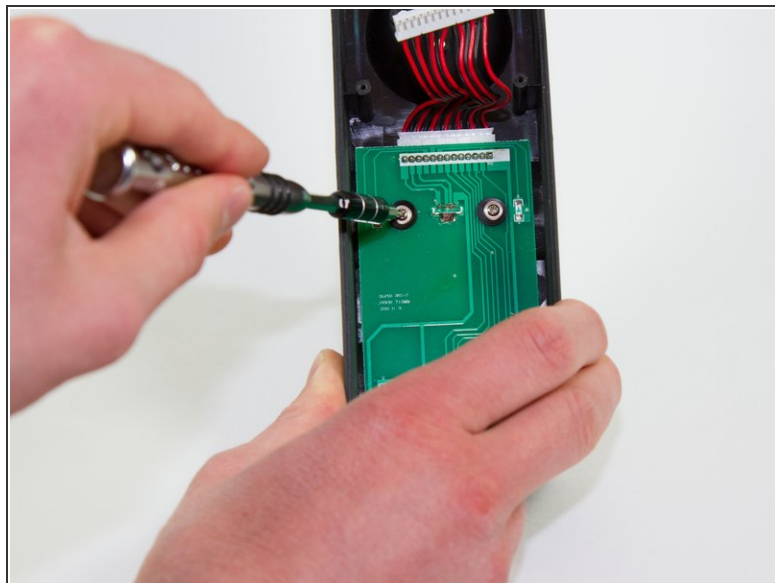
⚠ Pick the mother board straight up or you may risk damaging the mini-USB charging ports.

## Step 6



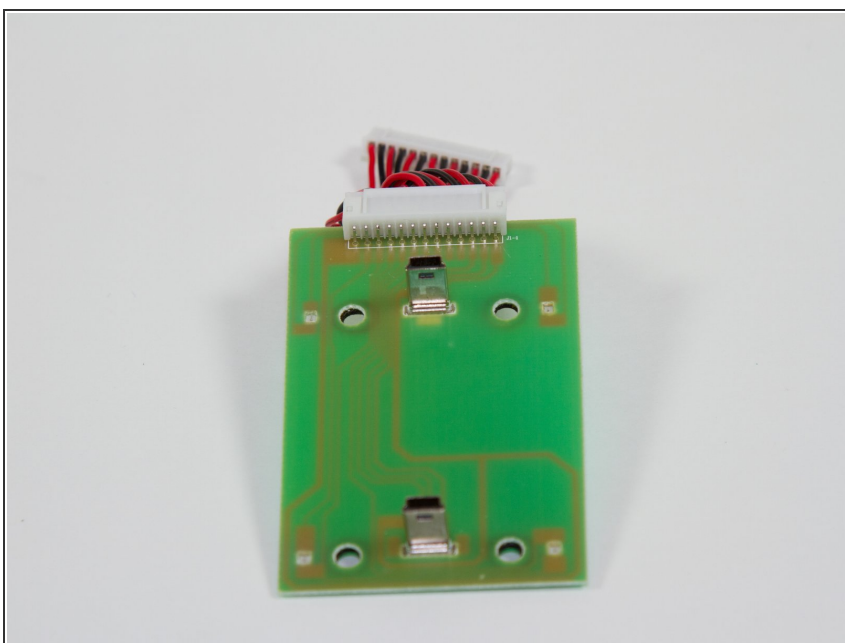
- Use a plastic opening tool or similar tool to gently pry the power ribbon cord out of its port.

## Step 7 — Power Board



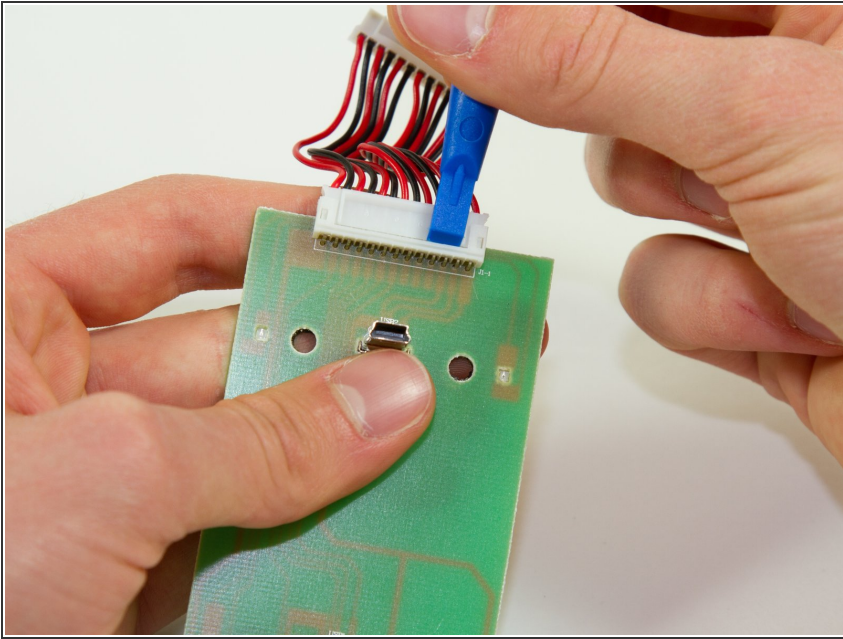
- Remove the four 1.8 mm PH0 screws that are holding the board in.
- ⓘ When you remove these screws, the plastic cups inside the PS Move stations will fall out.

## Step 8



- Pick up the board.
- ⚠ Pick the board straight up, or you risk damaging the charging ports.

## Step 9



- Using a plastic opening tool or a similar tool, gently pry the power ribbon cord out of its port.

To reassemble your device, follow these instructions in reverse order.