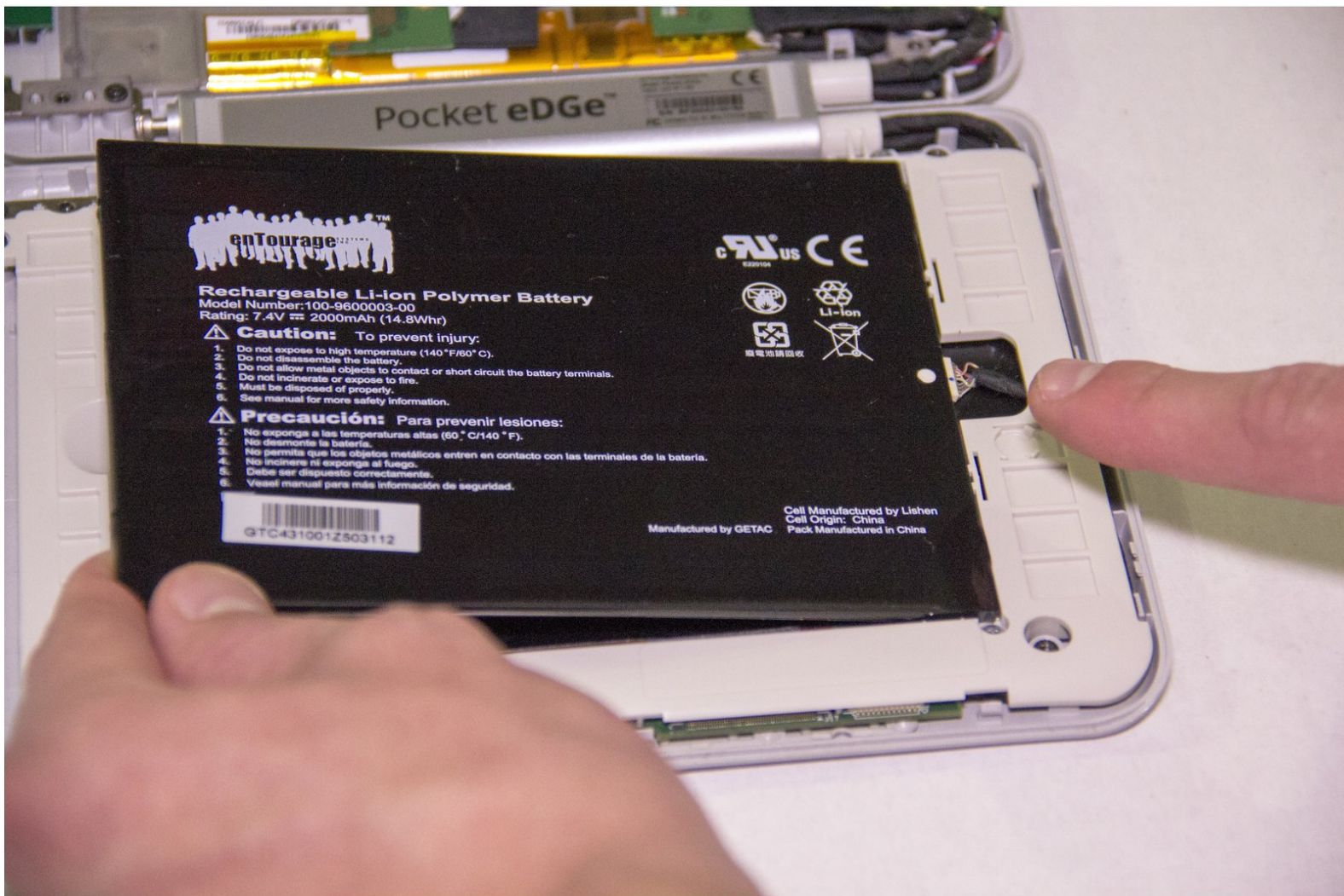




# enTourage Pocket eDGe Battery Replacement

This guide will aid the reader in replacing the battery on their Entourage Pocket eDGe.

Written By: Adrian Do



## INTRODUCTION

The enTourage Pocket eDGe may experience battery failure. If you need to replace the battery of your enTourage Pocket eDGe for any reason, follow this guide.



### TOOLS:

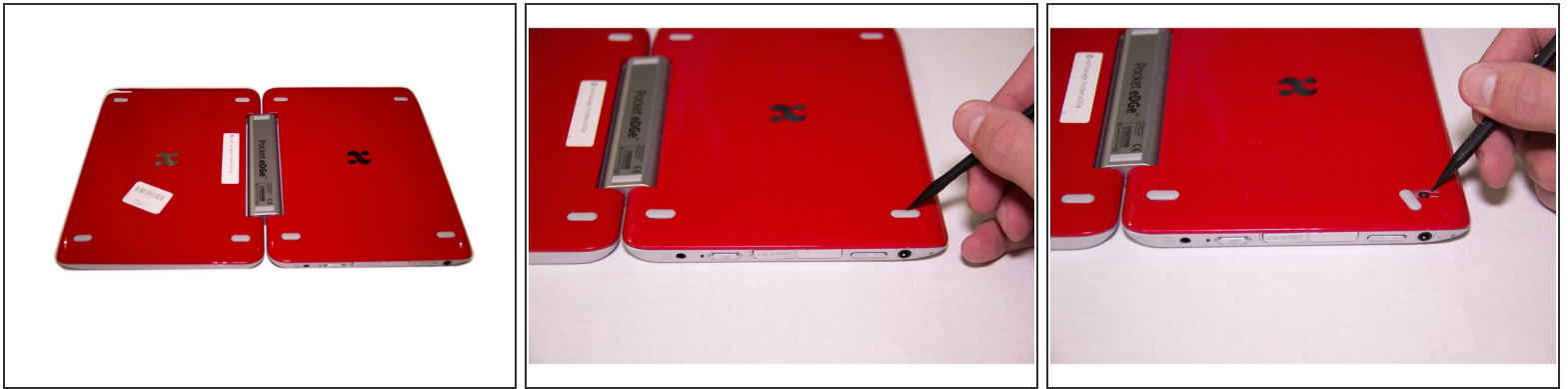
- [Screwdriver](#) (1)
- [JIS #1](#) (1)
- [iFixit Opening Tools](#) (1)



### PARTS:

- [Replacement Battery for Entourage Pocket eDGe](#) (1)

## Step 1 — Battery



⚠ Make sure the device is powered off before beginning.

- Open the Pocket Edge and place device with the screens face down. The side containing the stylus should be on the left.
- Remove all eight elliptical rubber tabs covering screws using your finger or spudger.

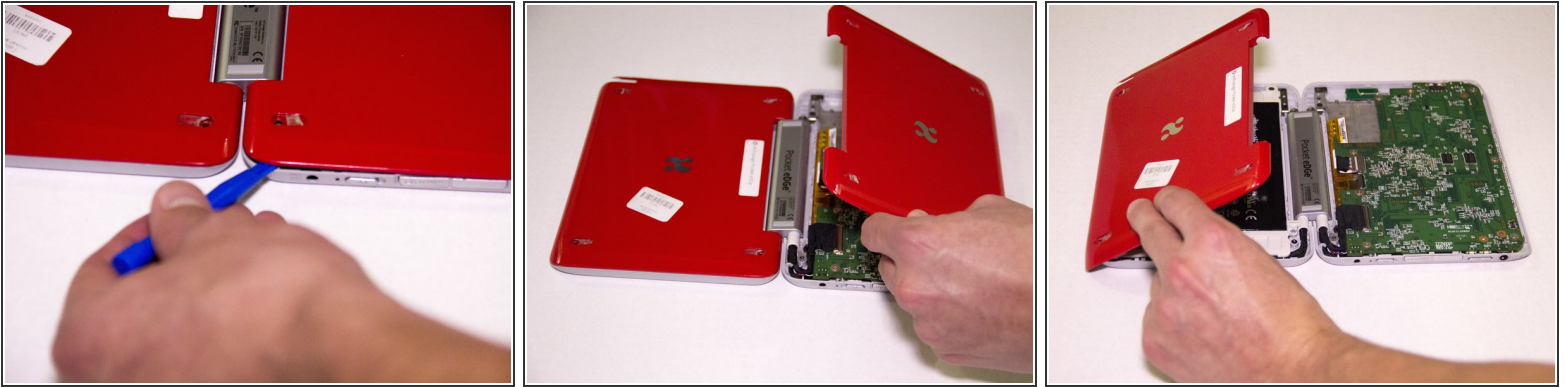
## Step 2



- Using your J1 Phillips head screwdriver, remove all eight 6mm screws from the back of your device.



### Step 3



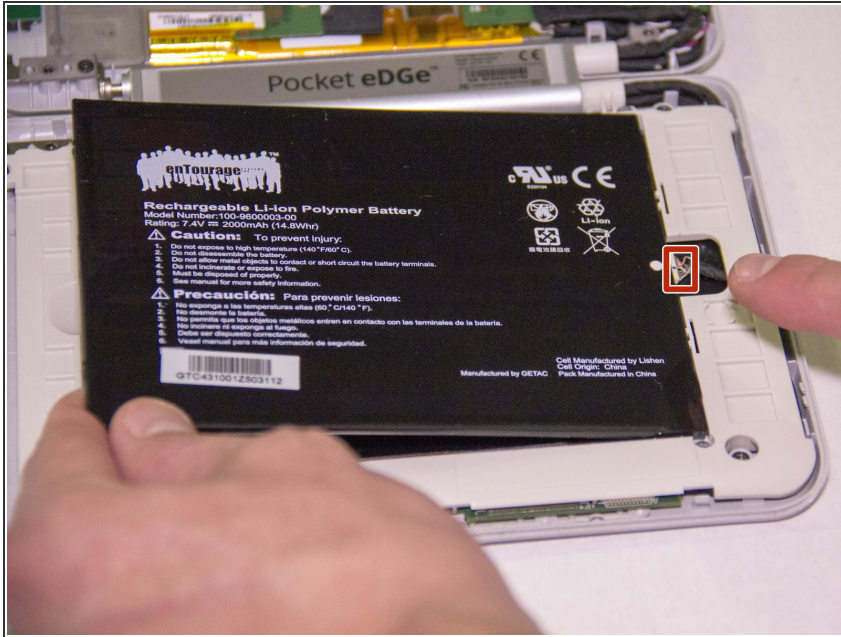
- Using the plastic opening tool, lift the back plate from both sides of your device and remove them.

### Step 4



- Locate the side containing the battery. Lift the top of the battery out using your finger and the indentation at the top.

## Step 5



- Carefully unplug the bottom side of the battery from the connecting plug and set the disconnected battery aside.

To reassemble your device, follow these instructions in reverse order.