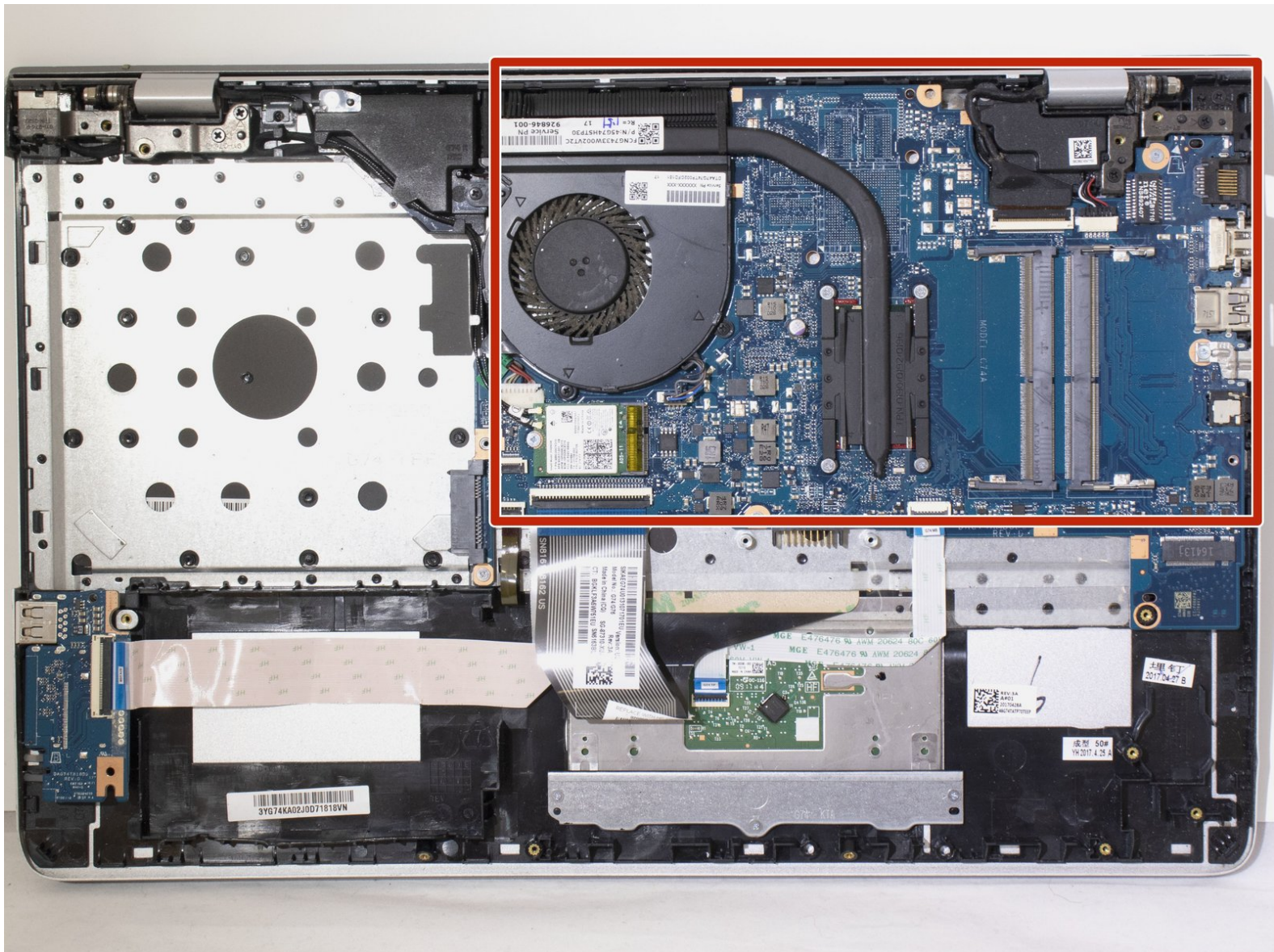




hp pavilion 15-cc023cl Motherboard Replacement

Replace the motherboard after nothing else fixes your broken laptop.

Written By: Stephanie Henry



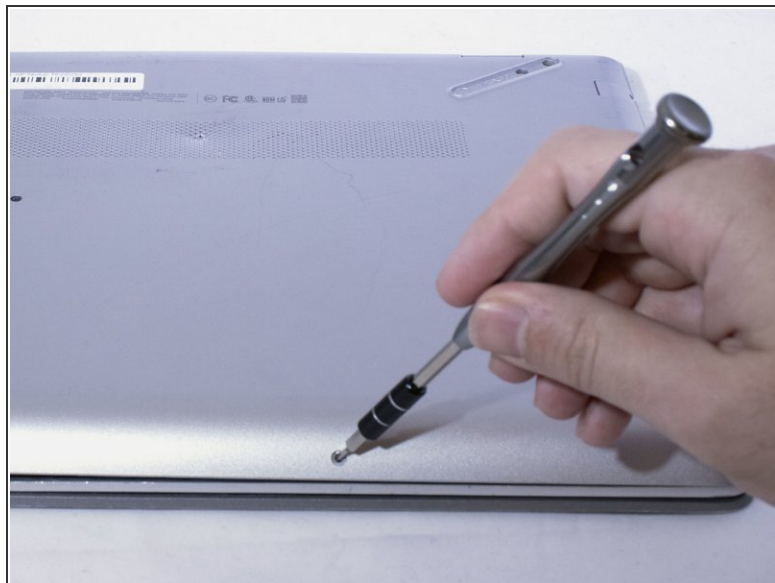
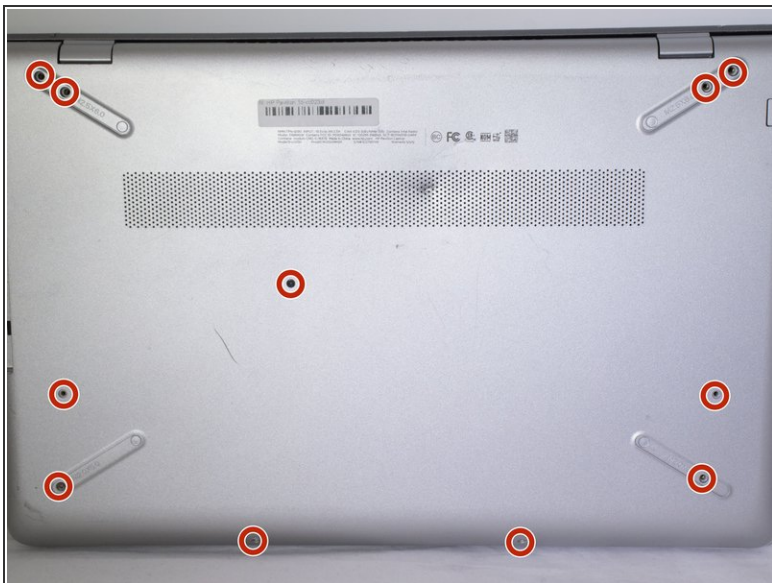
INTRODUCTION

If all else has failed, now is the time to replace your motherboard in a last attempt to save your laptop.

TOOLS:

- [Phillips #000 Screwdriver](#) (1)
 - [iFixit Opening Tools](#) (1)
 - [Spudger](#) (1)
 - [Phillips #0 Screwdriver](#) (1)
 - [Phillips #1 Screwdriver](#) (1)
-

Step 1 — Battery



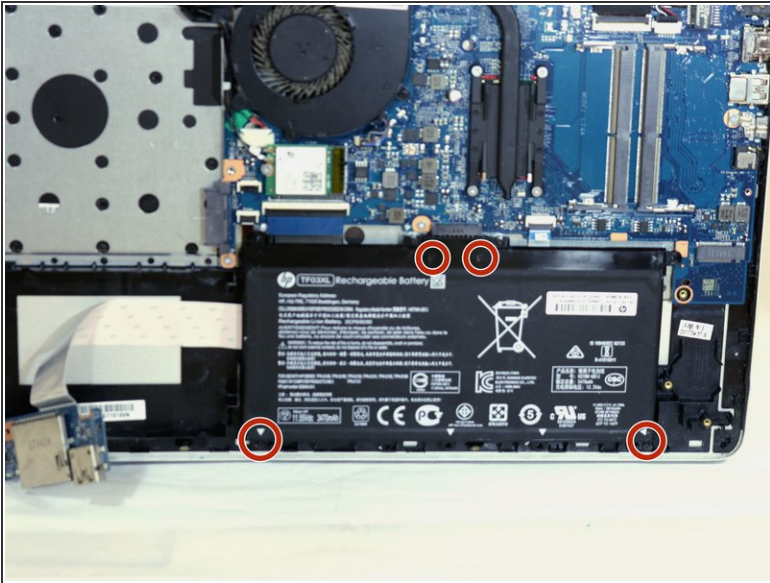
- Use a PH000 screwdriver to unscrew the eleven 4mm Phillip head screws located on the back panel.

Step 2



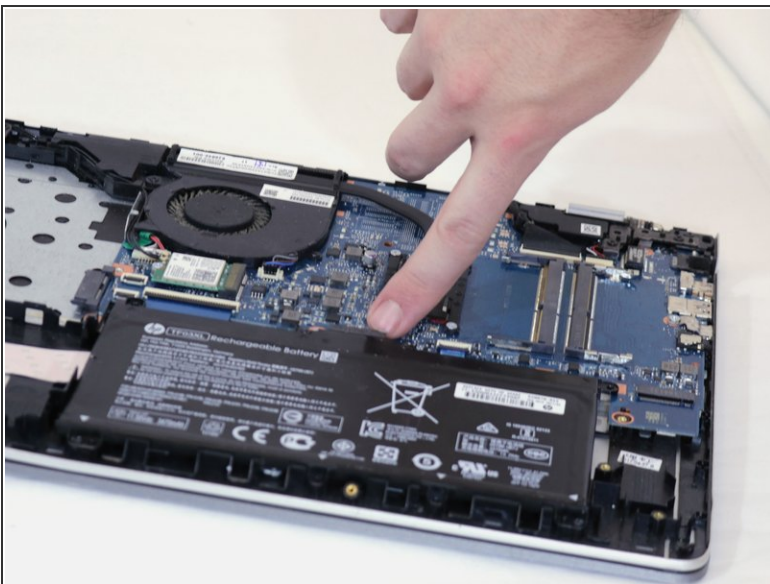
- Using the iFixit opening tool, pry open and remove the back cover of the laptop.
- ⚠ Be gentle when applying force to the cover.

Step 3



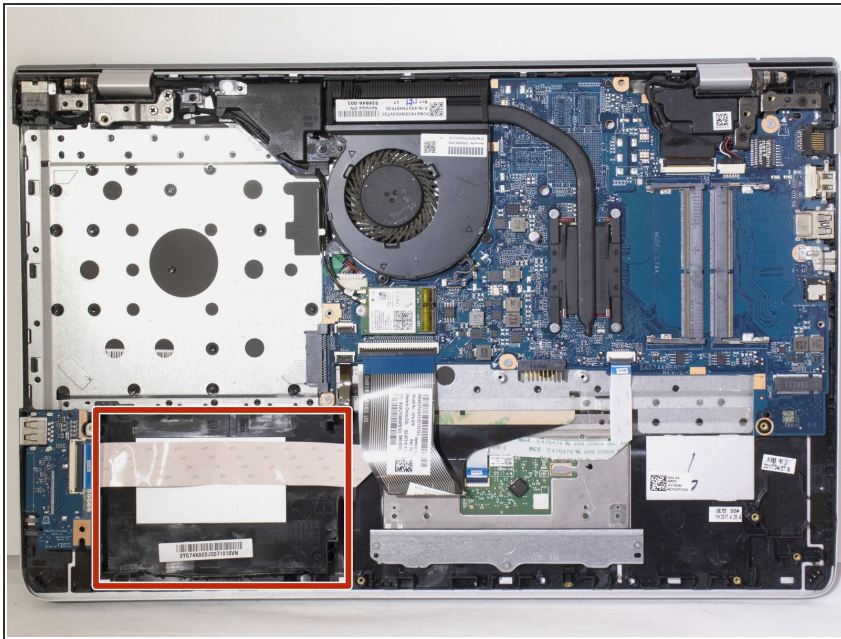
- Use a PH000 screwdriver to unscrew the four 3.5mm Philips head screws located on the battery.

Step 4



- Disconnect the port connecting the battery and the motherboard and then remove.

Step 5 — Hard Drive



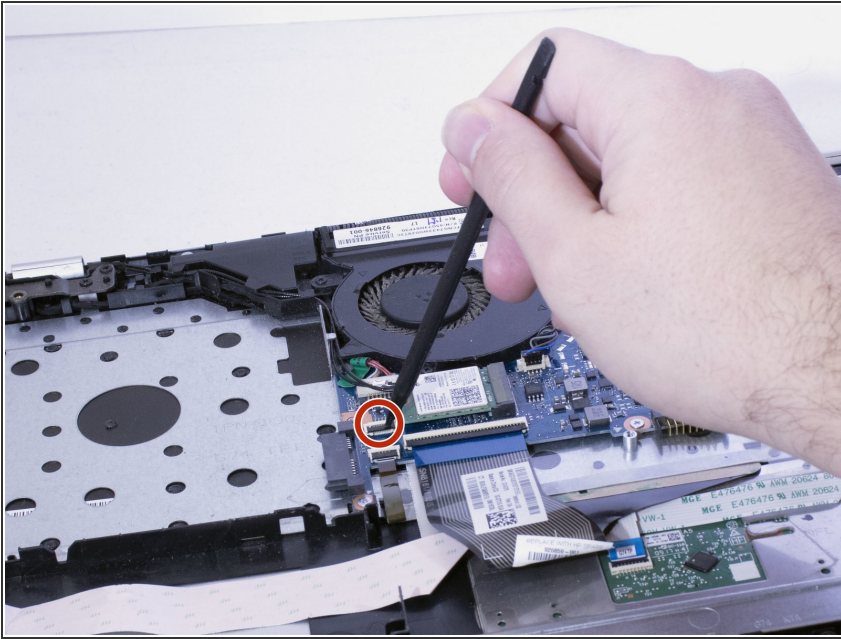
- Use a spudger to lift the latch that holds the hard drive cable in place.

Step 6



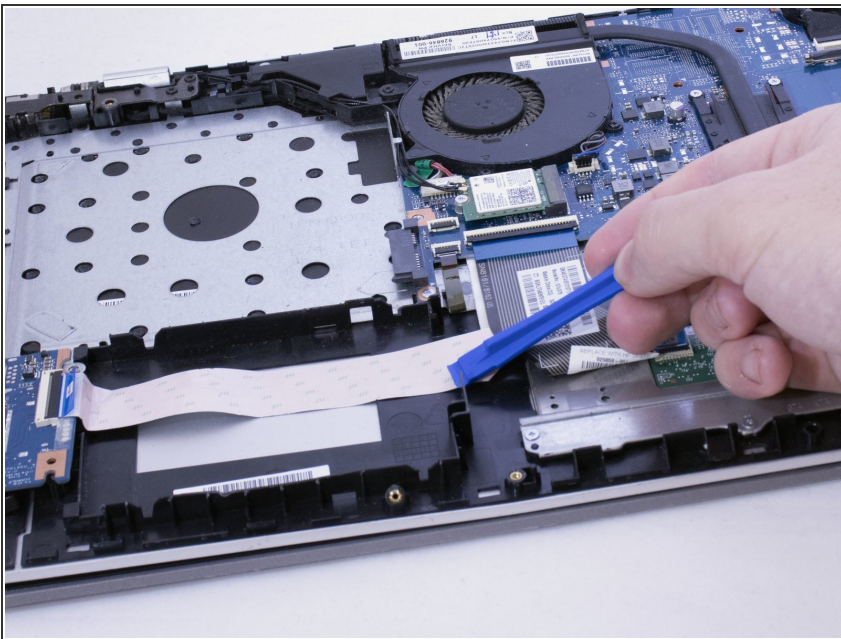
- Use a plastic opening tool to pry the hard drive out.

Step 7



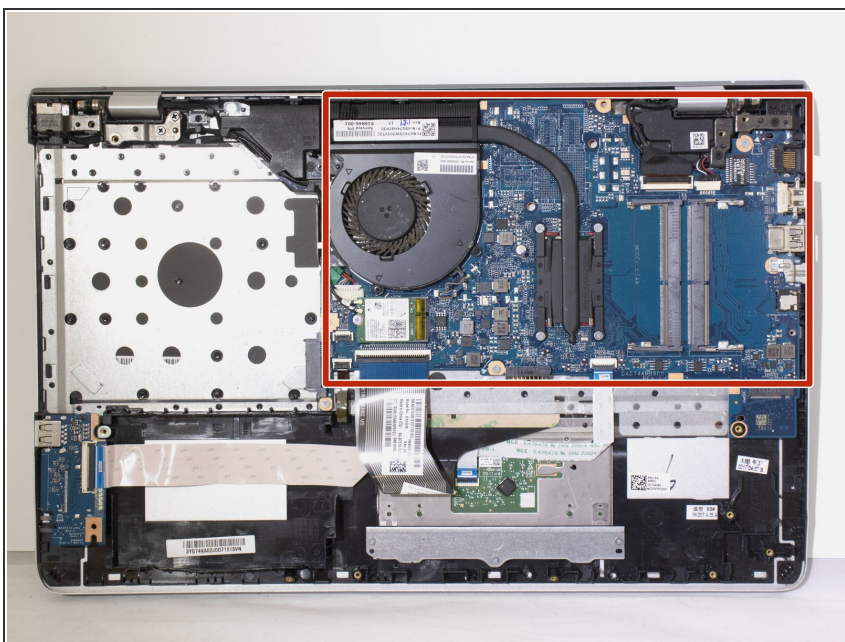
- Disconnect the hard drive cable.

Step 8



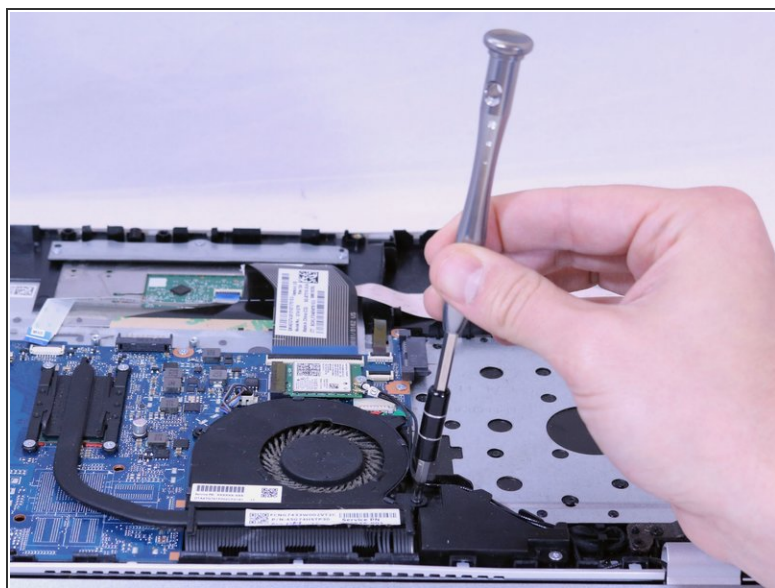
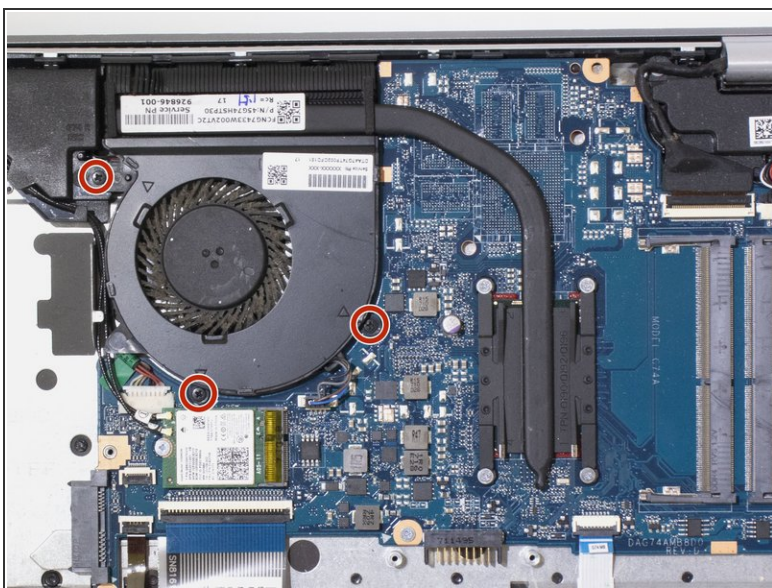
- Lift the plastic wedges up on both sides of the hard drive.

Step 9 — Motherboard



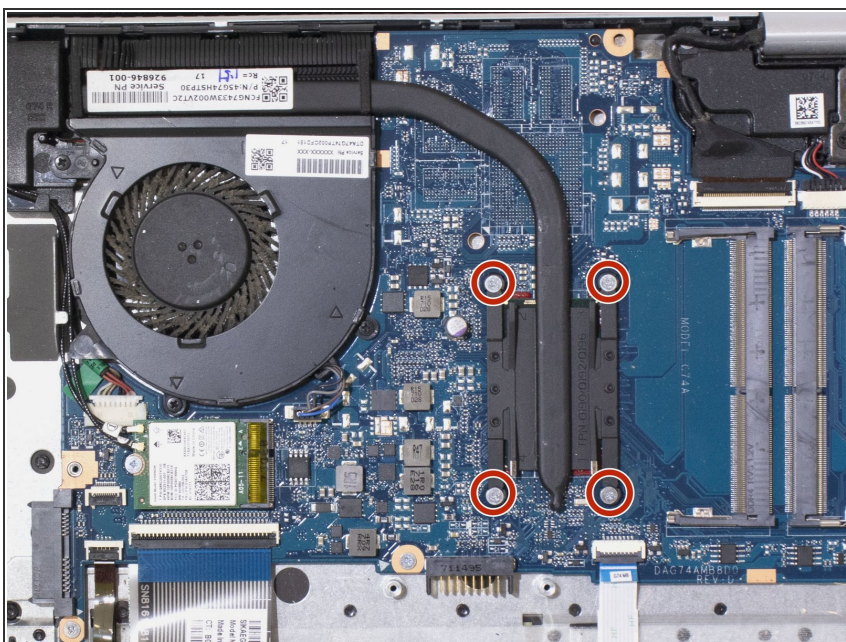
- Locate the motherboard.

Step 10



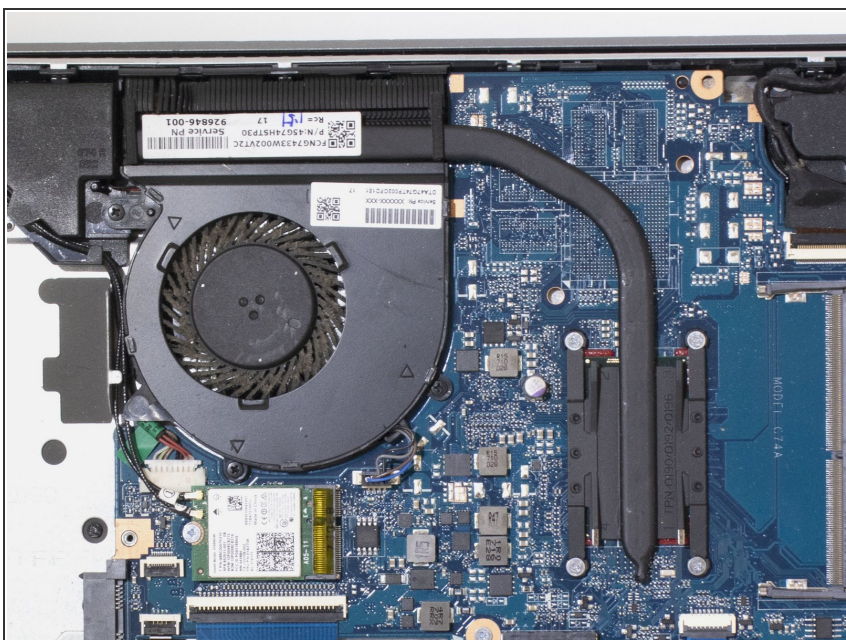
- Use a PH0 screwdriver to unscrew the three 3 mm Phillips head screws located on the fan.

Step 11



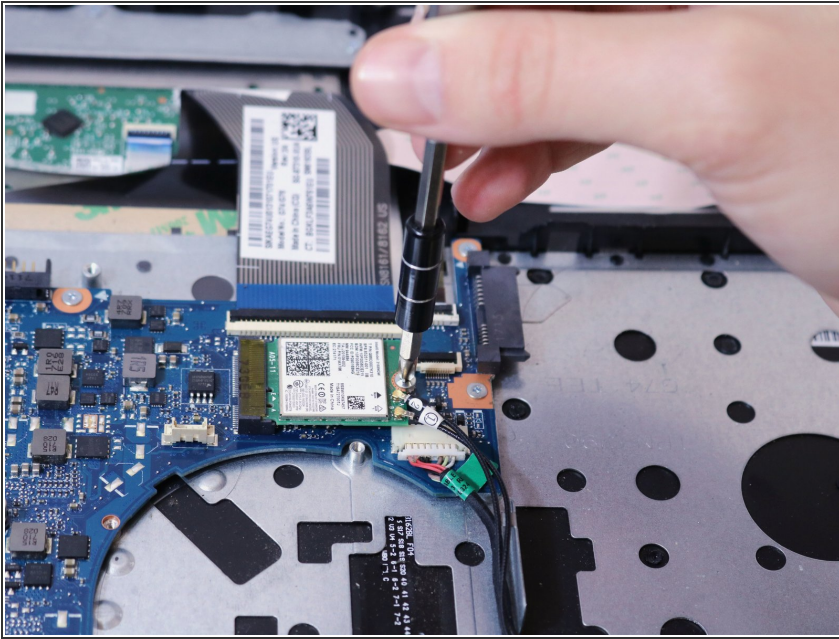
- Use a PH1 screwdriver to unscrew the four 3mm Phillips head screws located on the processor cover.
- Disconnect the cable.

Step 12



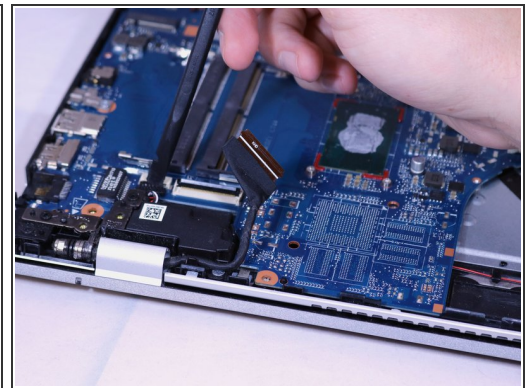
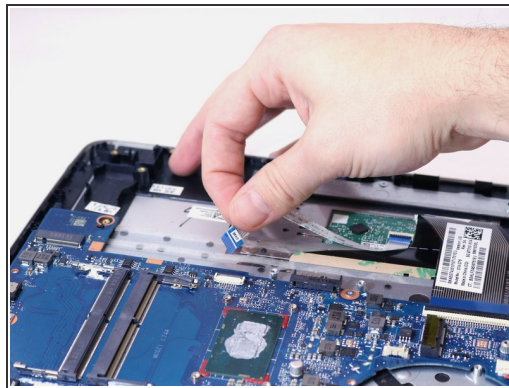
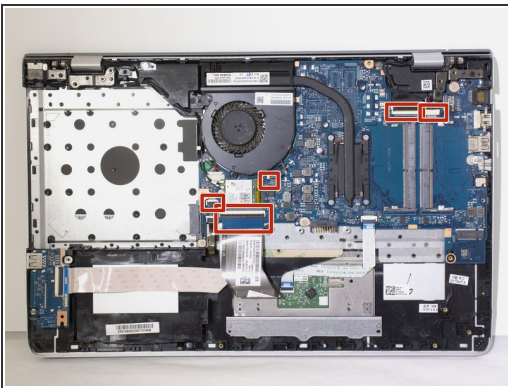
- Disconnect the plastic arm attached to the processor and remove.
- Disconnect the cable attaching the fan to the motherboard and remove.

Step 13



- Use a PH1 screwdriver to unscrew one 3mm Phillips head screws on Wifi card.
 - Disconnect the Wifi card.
- ⚠ Be careful not to break any of the connectors.

Step 14

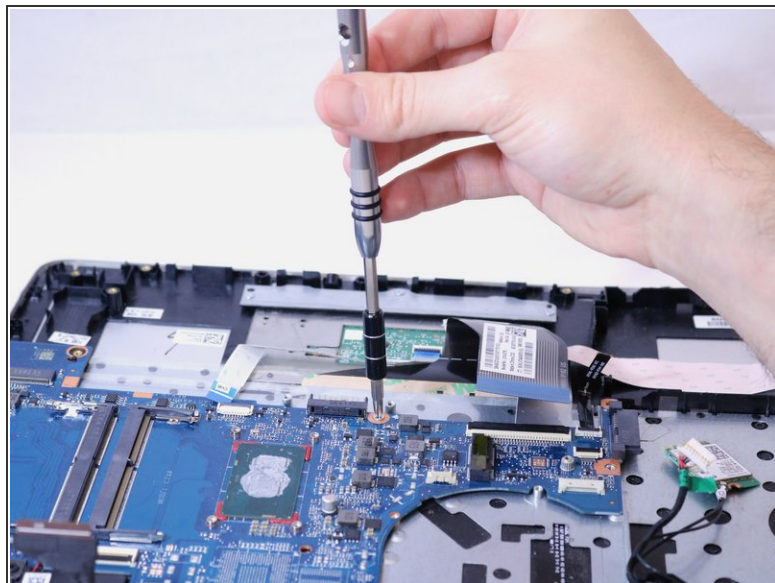
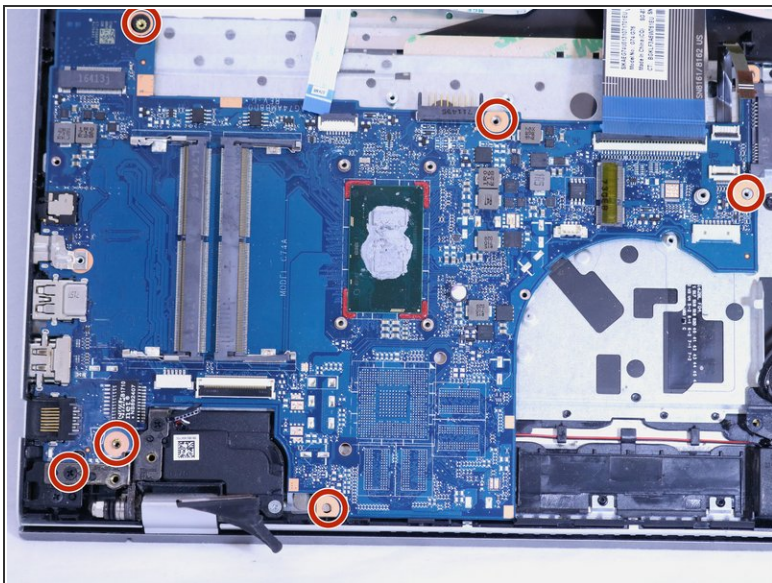


- Disconnect the 5 cables to keyboard and speakers.

⚠ Be careful not to break any of the connectors.

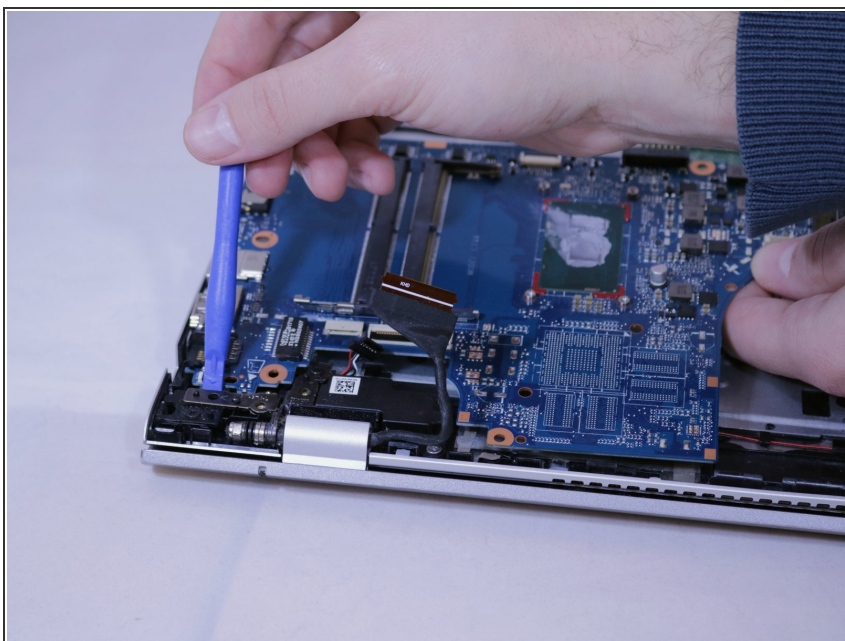
i You may have to pry some up with the spudger.

Step 15



- Use a PH1 screwdriver to unscrew six 3 mm Phillips head screws on the motherboard.

Step 16



- Use the iFixit opening tools to pry motherboard from back of laptop.

Step 17



- Disconnect SD and USB card cable.

To reassemble your device, follow these instructions in reverse order.