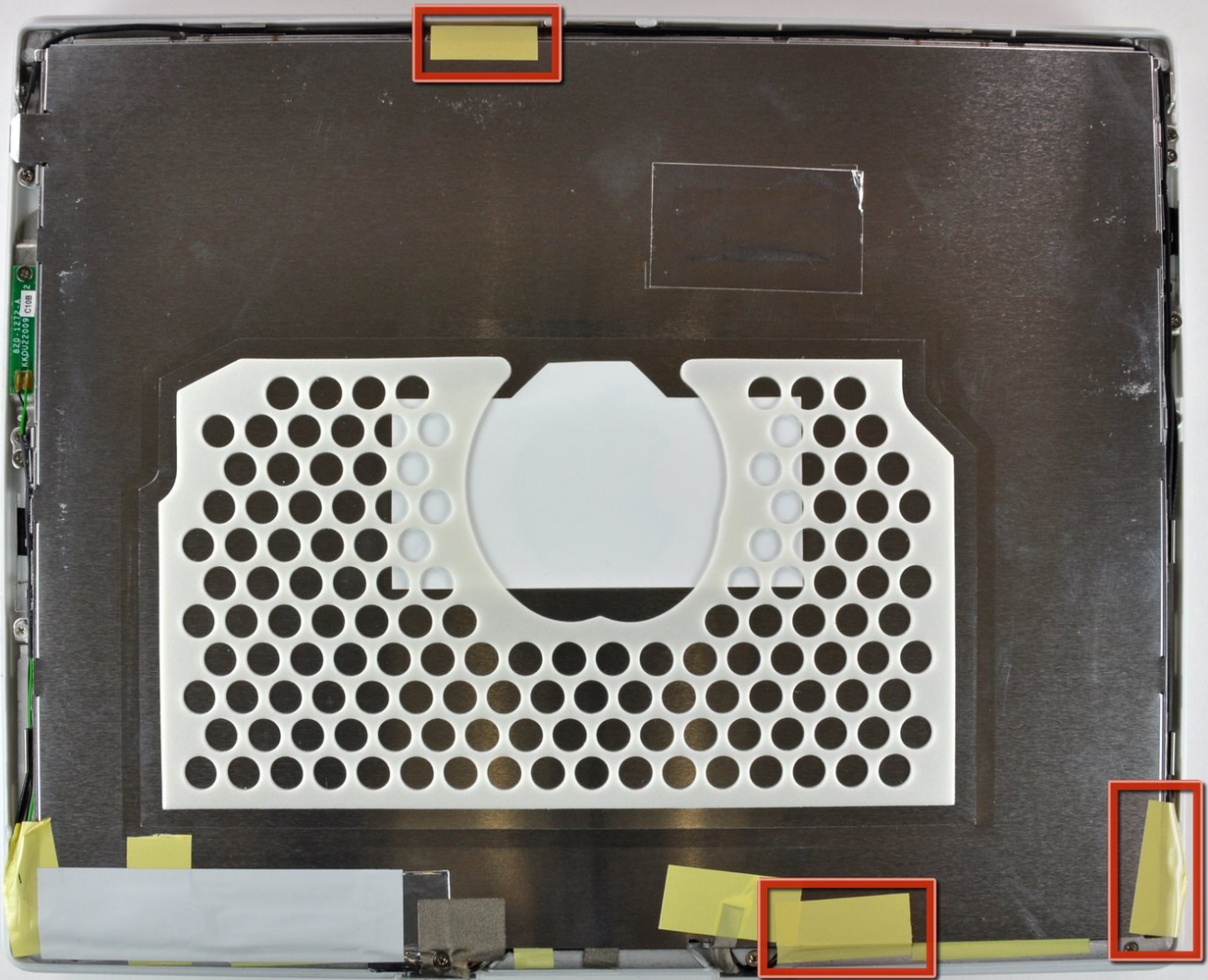




iBook G4 12" 800 MHz-1.2 GHz LCD Replacement

Written By: Andrew Bookholt



INTRODUCTION

Replace a broken LCD/Backlight with the display still attached to your iBook.



TOOLS:

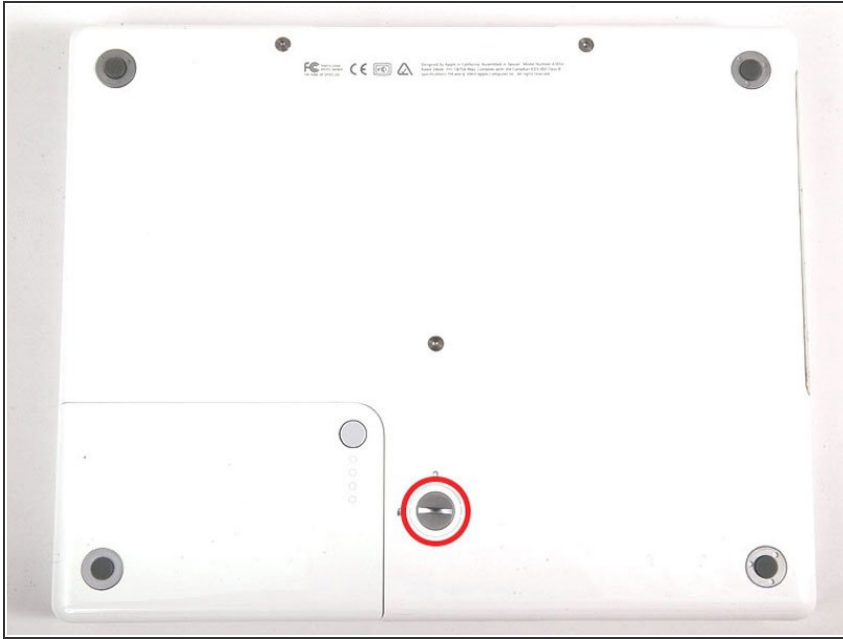
- [1.5mm Hex Screwdriver](#) (1)
- [Coin](#) (1)
- [Phillips #00 Screwdriver](#) (1)
- [Spudger](#) (1)



PARTS:

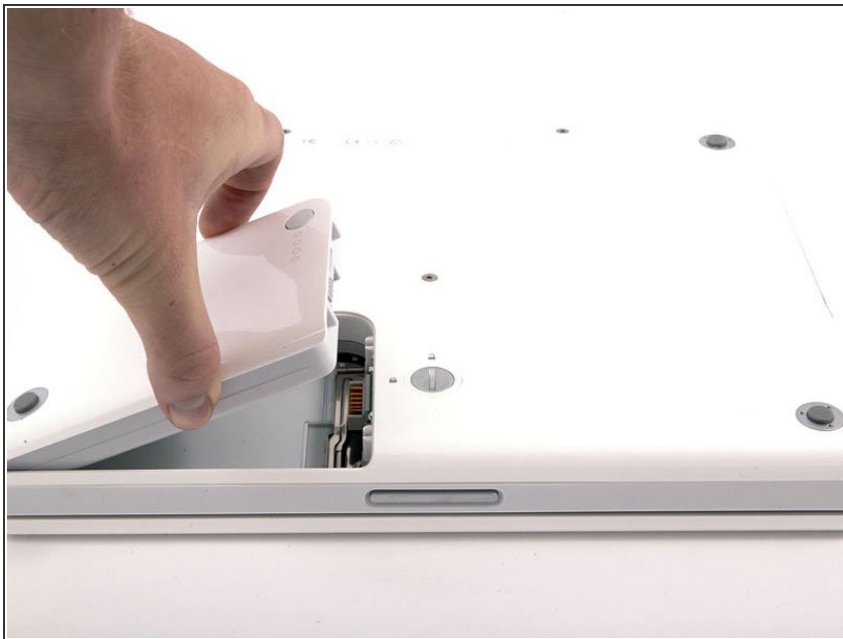
- [iBook G3 or G4 12" LCD Panel](#) (1)

Step 1 — Battery



- Use a coin to rotate the battery locking screw 90 degrees clockwise.

Step 2



- Lift the battery out of the computer.

Step 3 — Rear Display Bezel



- Use a 1.5mm hex screwdriver to remove the two hex screws on either side of the display (four screws total).
- ⓘ If you don't have a 1.5mm hex driver, you can probably get these screws out with a T6 Torx screwdriver. However, if you use a T6 Torx driver you'll be more likely to strip the screws.

Step 4



- Insert the flat end of a spudger perpendicular to the face of the display into the gap between the front and rear bezels near the upper left corner of the display.
- Rotate the spudger away from the display to pry the rear bezel off the front bezel.

Step 5



- Run your spudger along the top edge of the front display bezel to evenly separate the two bezels.

Step 6



- Working down from the upper left corner, use the flat end of a spudger to pry the rear bezel away from the left edge of the display.

Step 7



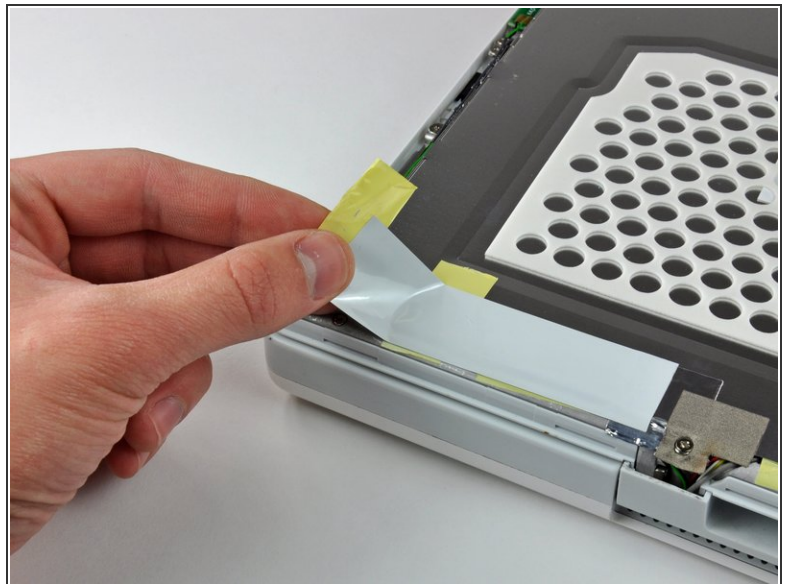
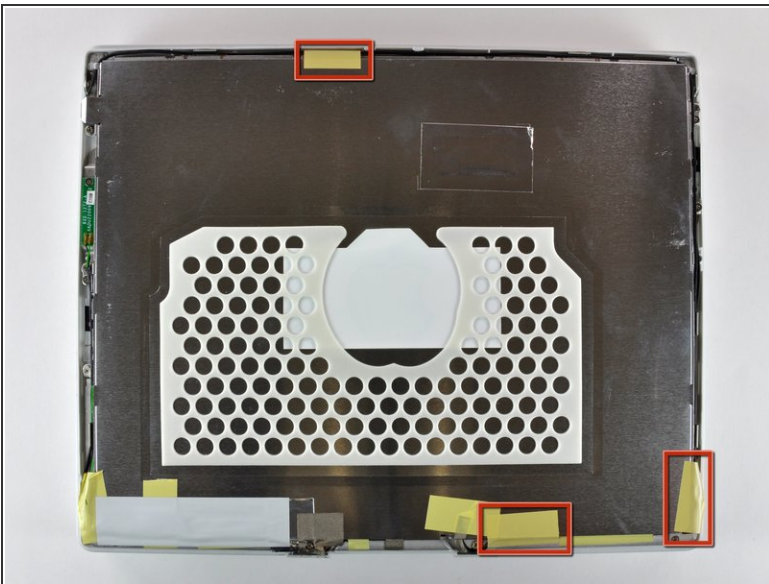
- Use the flat end of a spudger to pry the rear bezel away from the right edge of the display.
- If necessary, pry along the bottom edge of the rear bezel to separate it from the display assembly.

Step 8



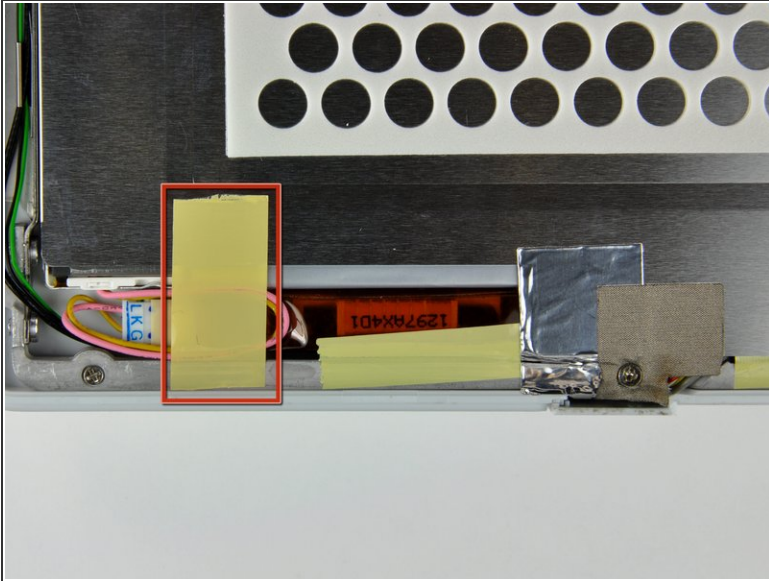
- Lift the rear bezel off the display assembly.

Step 9 — LCD



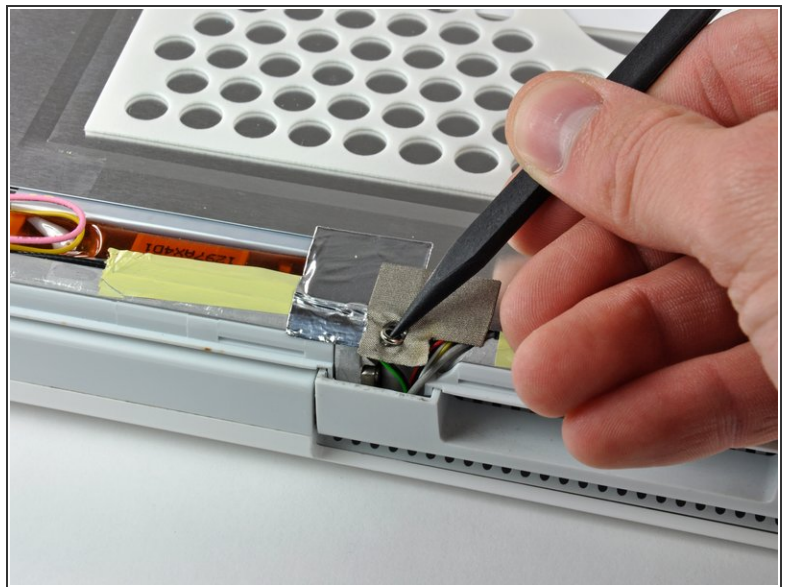
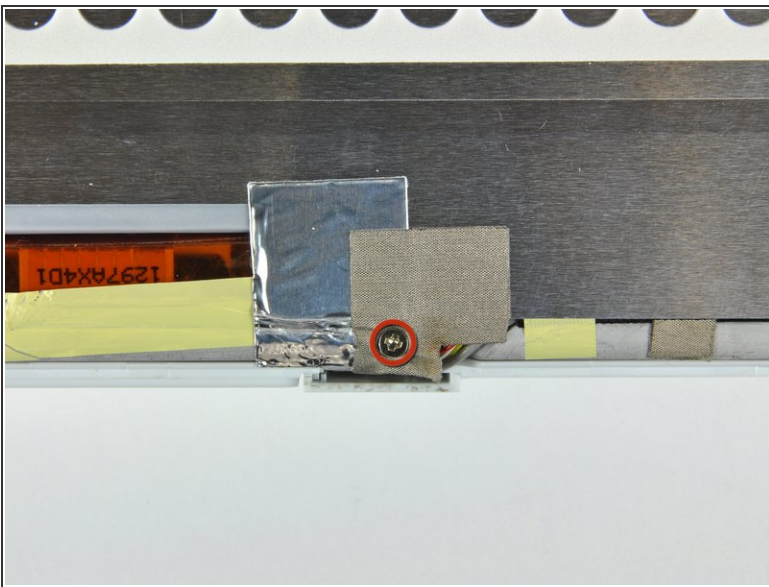
- Close the display.
- Remove the small pieces of yellow tape securing the thin metal LCD cover to the display.
- Remove the large piece of tape near the right display hinge.

Step 10



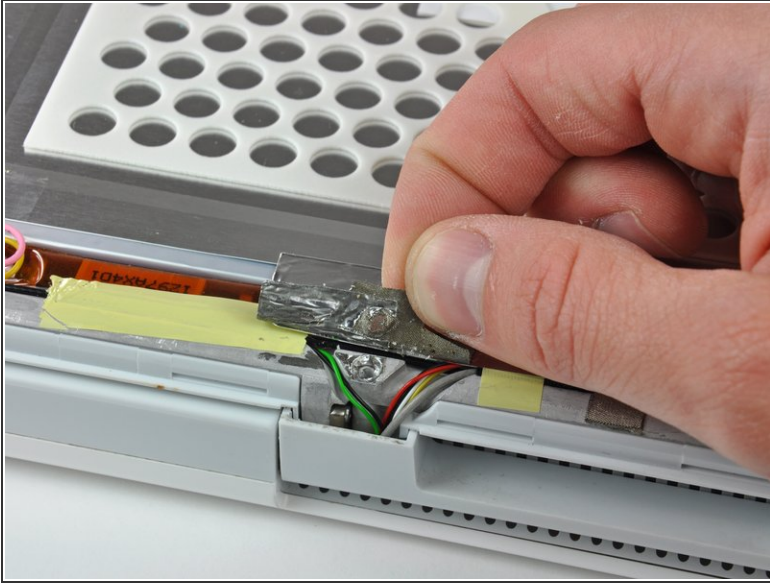
- Remove the tape covering the inverter cable connector.
- Remove the piece of foil tape near the center of the thin metal LCD cover.

Step 11



- Remove the Phillips screw near the right display hinge.
- Use the tip of a spudger to remove the small spacer under the screw you just removed.

Step 12



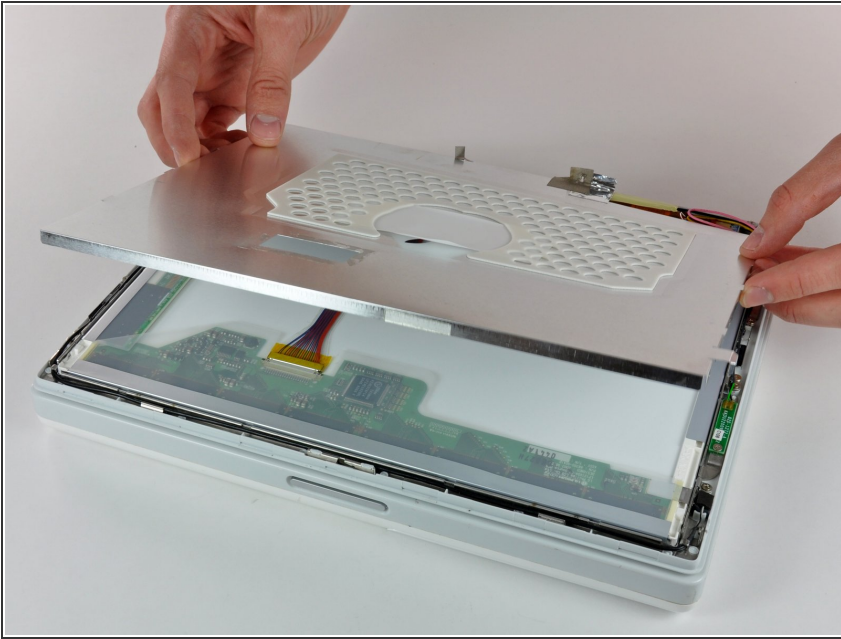
- Pull the foil/braided pieces of tape off the aluminum frame of the clutch hinges. Leave the tape attached to the thin steel LCD cover.
- Remove the small piece of tape holding the display data cable ground strap to the LCD cover.

Step 13



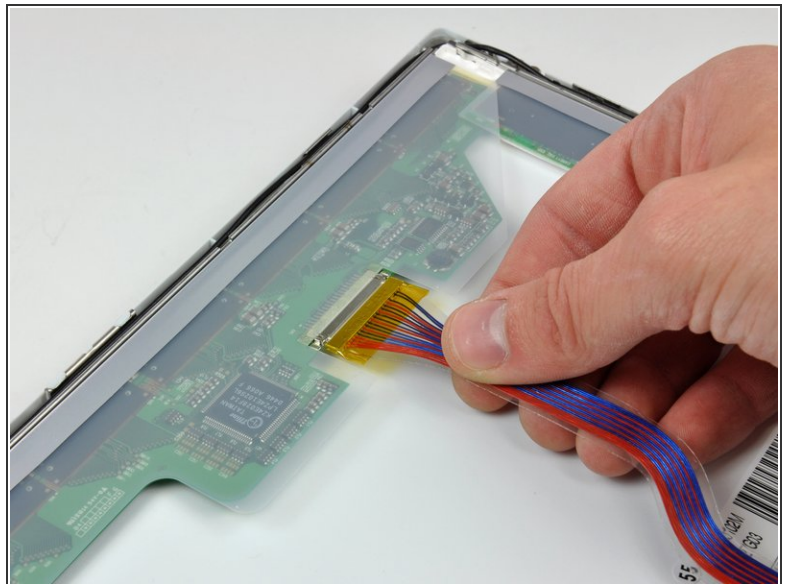
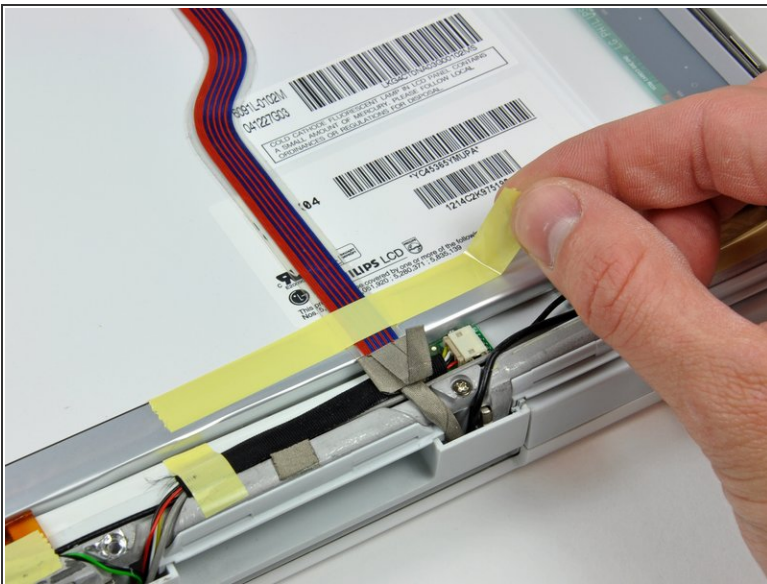
- Remove the two Phillips screws securing the left and right sides of the LCD to the frame of the clutch hinges (four screws total).

Step 14



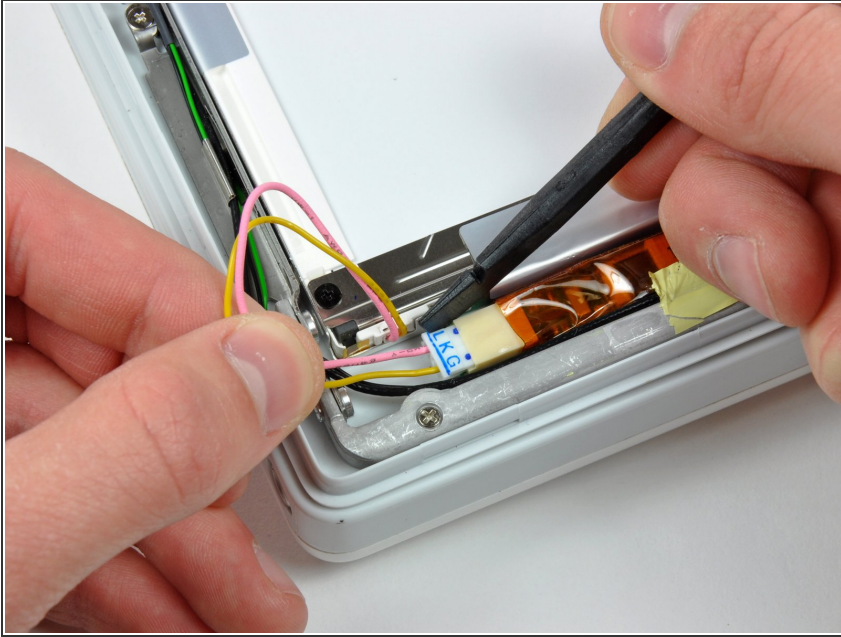
- Carefully remove the thin steel LCD cover.

Step 15



- Remove the long piece of tape securing the display data cable to the LCD.
- Disconnect the display data cable by pulling the cable away from the socket on the LCD.

Step 16



- Disconnect the backlight cable from the inverter.
- ⓘ It is helpful to use a spudger to push the backlight connector away from its socket while you lightly pull its cables away from the inverter.

Step 17



- Open the display.
- Lift the LCD out of the display assembly.

To reassemble your device, follow these instructions in reverse order.