



iDea USA CT 1020 Front & Rear Camera Assembly Replacement

A step-by-step replacement guide for front and rear camera assembly.

Written By: David Lawrence



INTRODUCTION

For this repair guide, the rear facing camera on the iDea USA CT 1020 will be addressed. The camera can easily become damaged or cracked if the tablet is mishandled by the user, or the camera can simply stop working. Once the backing plate is removed from the tablet and the rear camera is located on the motherboard, the removal process is simple. The electrical ribbon running from the camera goes to an electrical connector, and once the connector is unsnapped, the camera is free to be removed.



TOOLS:

- [Flathead 3/32" or 2.5 mm Screwdriver](#) (1)
- [iFixit Opening Tools](#) (1)



PARTS:

- [Rear Camera](#) (1)

Step 1 — Front & Rear Camera Assembly



! First, power down the tablet to avoid the chance of electrical shock or damaging the machine during repair work

- Place the tablet on a clean surface with the screen down

Step 2



- Remove the back plastic casing of the tablet by releasing the plastic clips with a plastic opening tool or a spudger.

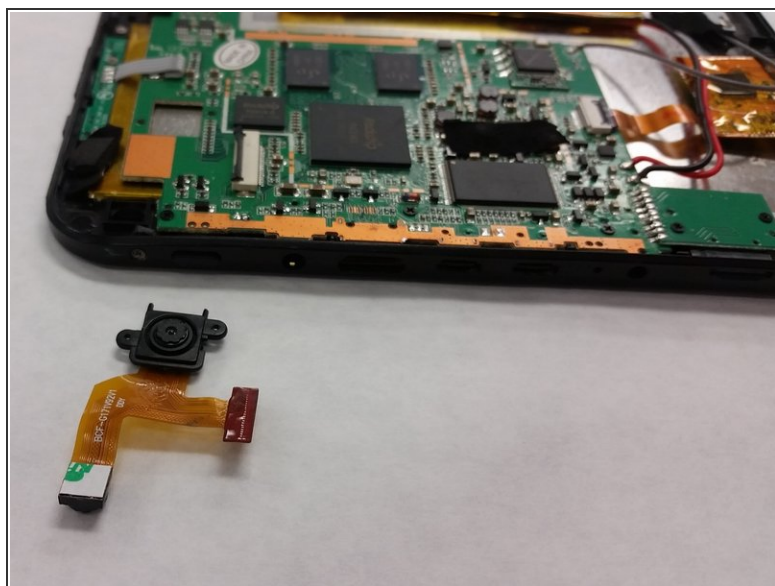
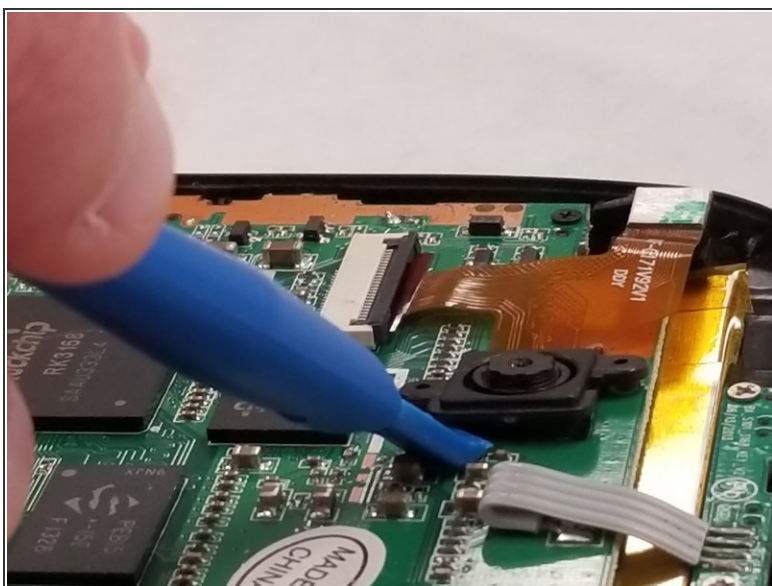
i Be cautious and take your time here; the plastic clips are quite fragile.

Step 3



- Use a plastic opening tool or spudger to lift and release the camera assembly ZIF tab.
- Gently pull the ribbon cable free.

Step 4



- The camera is held in place by adhesive material on the back of the camera
- To complete removal, peel the camera off the mother board

To reassemble your device, follow these instructions in reverse order.