



iDea USA CT702 Battery Replacement

The Battery Replacement guide for the IDEAUSA CT702 is a structured, step by step manual to replace the CT702 battery.

Written By: Benton Gray



INTRODUCTION

This simple task of replacing the battery will lengthen the lifespan of the charge on the iDeaUSA CT702.



TOOLS:

- [iFixit Opening Tools](#) (1)

Flat tip

- [Soldering Iron](#) (1)



PARTS:

- [Solder](#) (1)

Step 1 — Battery



- Face the tablet with portholes facing you.

Step 2



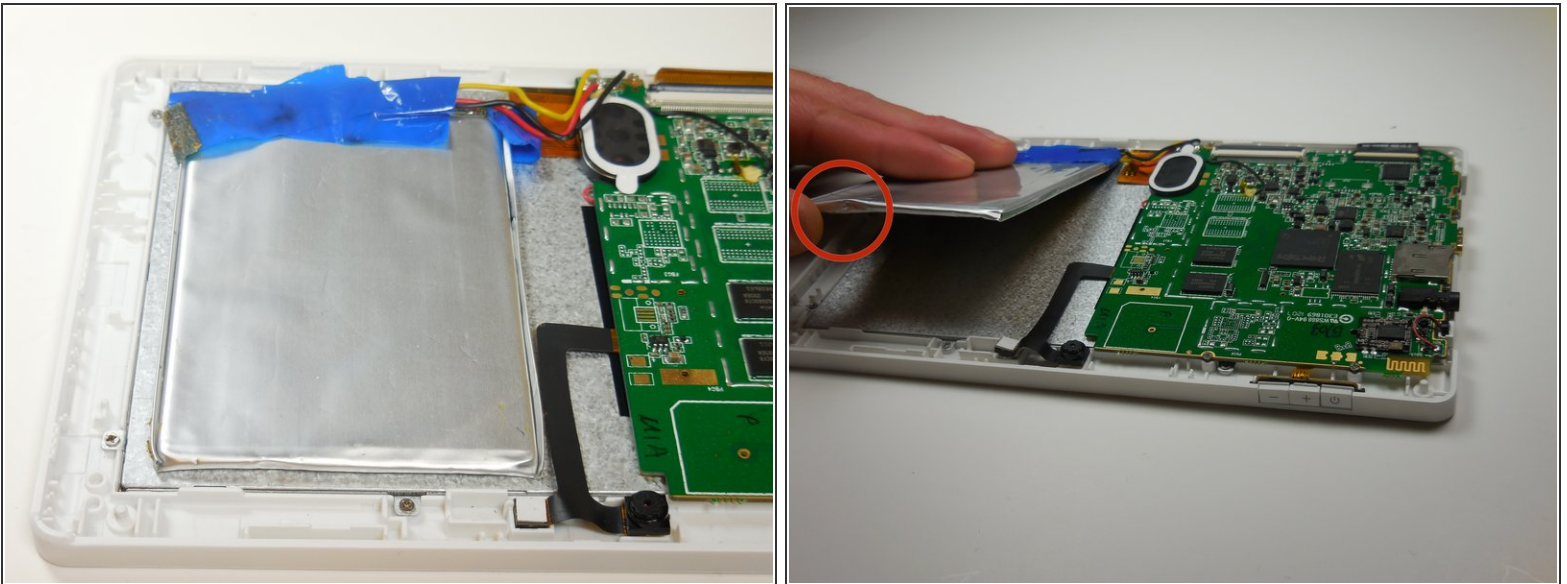
- Use a fingernail, or a plastic opening tool to gently pry the black panel around the portholes.
- ⓘ Be gentle and take your time.

Step 3



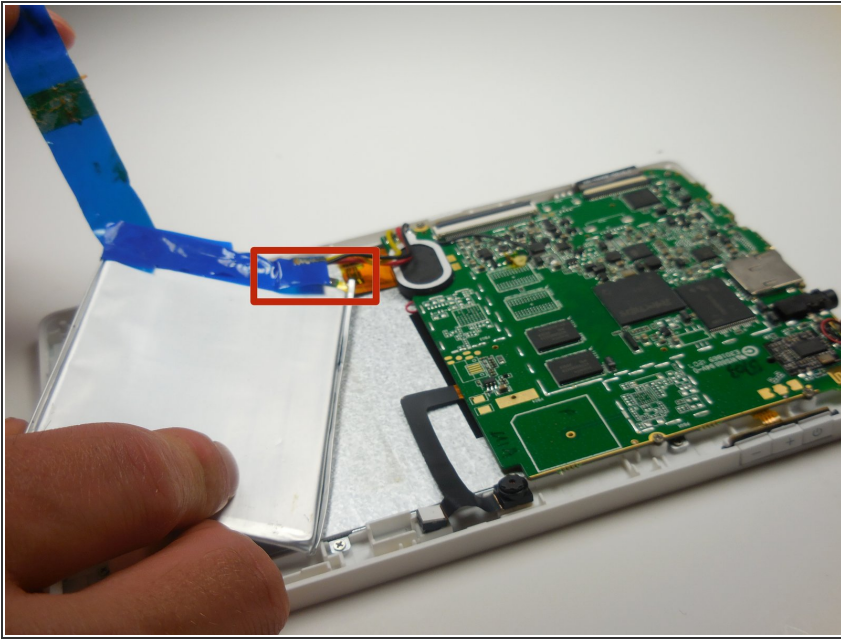
- Use your fingers to pry the rest of the back off. Slowly apply pressure from each side to break each clip connection.

Step 4



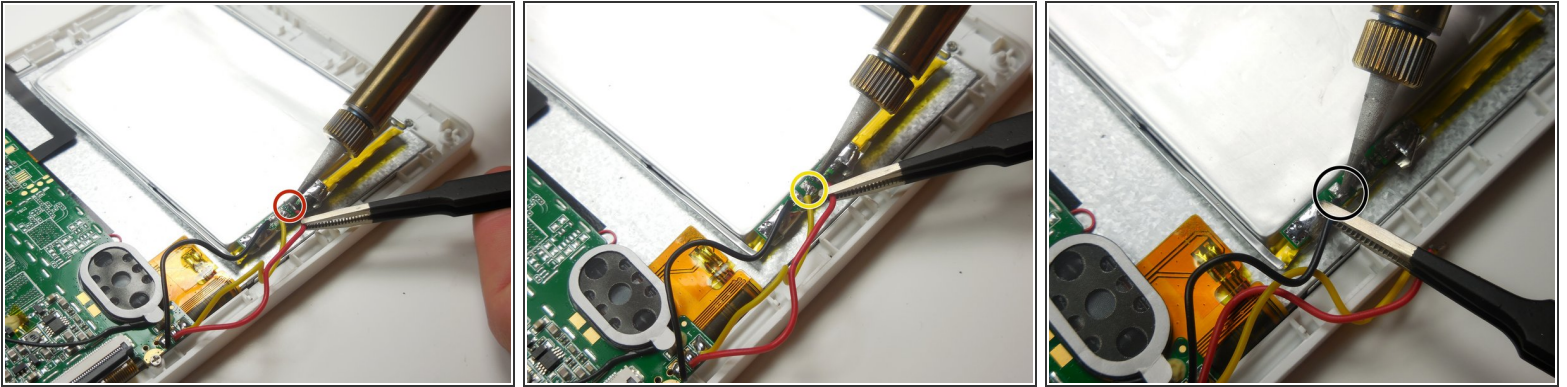
- Separate battery from device
 - Slowly use your thumb and fore fingers to pry from each corner.
- ⚠ Be aware of the adhesive on the bottom of the battery. Remove with care to keep battery in tact.

Step 5





- Carefully peel off tape around the top of the battery.
- Slowly use your fingernail to lift tape off of battery, dispose of tape or save for reuse.

Step 6



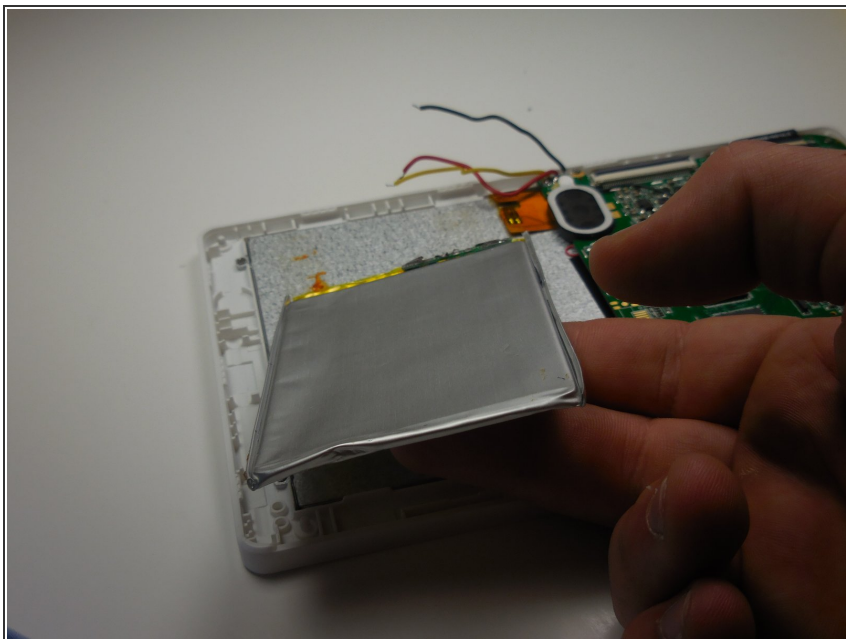
- Disconnect the battery using soldering iron.

 Remember to use proper safety precautions when soldering. Solder from the side and do not breath the smoke in.

 Make sure the soldering iron is on the highest heat for 5 minutes before starting.

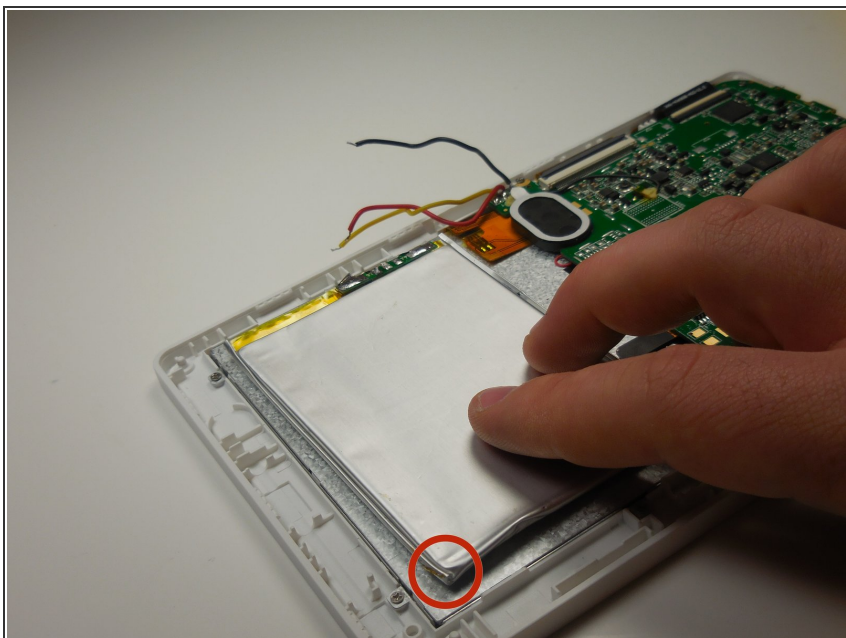
- Start with the red wire, and gently touch the tip of the iron onto the connection.
- Move to the yellow wire after the red.
- Move to the black wire after the yellow.

Step 7



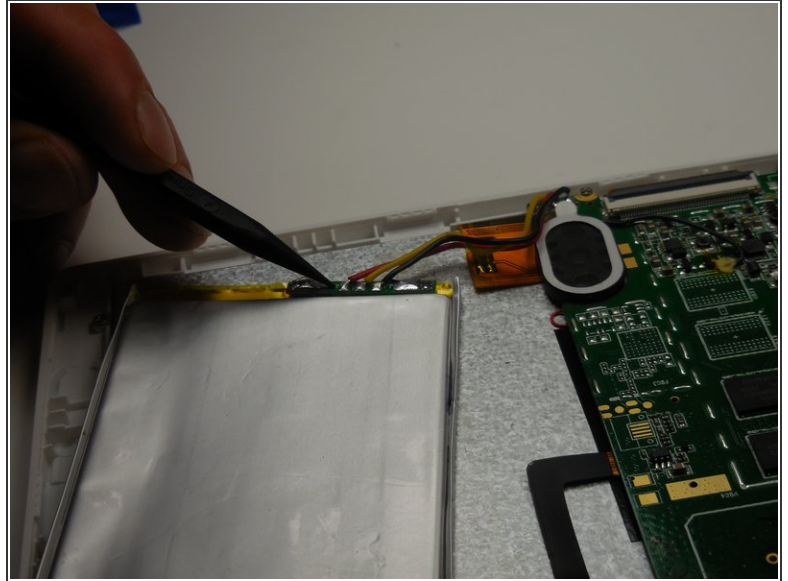
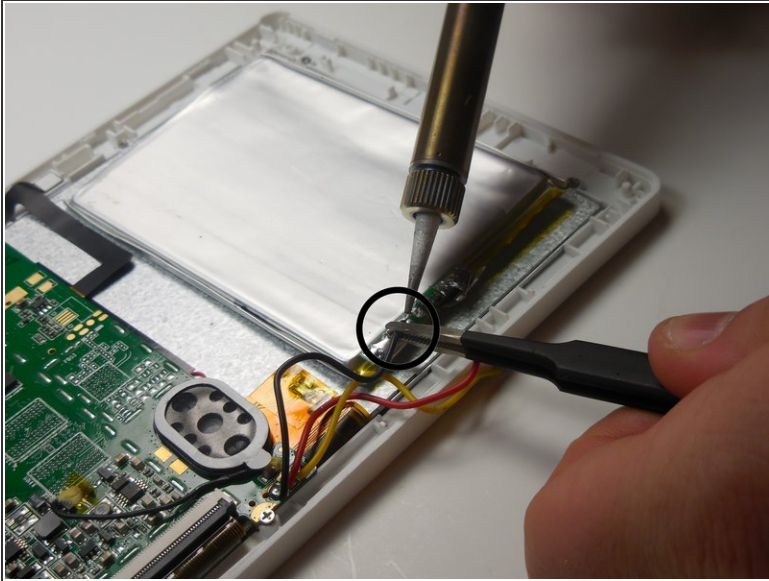
- Remove battery completely, dispose of defective battery properly at a recycling center.

Step 8



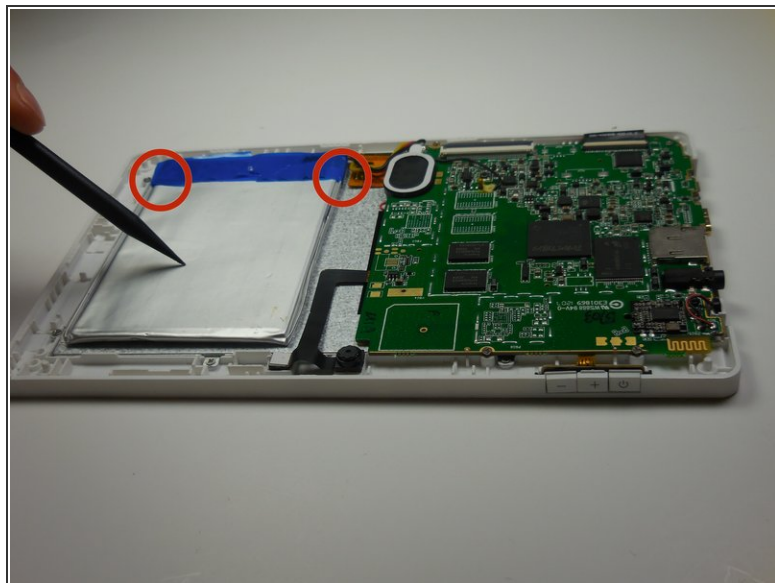
- Put new battery in place
- Make sure the corners are inside of the white shell

Step 9



- Solder new battery
- Start with the black wire and solder to the nearest connection
- Move to the yellow wire and solder to the middle connection
- End with the red wire and solder to the farthest connection away

Step 10



- Re-tape battery at the top
- ⚠ Make sure solder has cooled before taping
- Tape the corners in place, onto the shell
- To replace back cover follow the first three steps in reverse order

To reassemble your device, Start from step 9 and work backwards.