



iDea USA CT702 Digitizer Glass Replacement

When your screen is damaged, a replacement of the screen is an easy way to save money and the environment.

Written By: David Kambich



INTRODUCTION

This guide provides quick and easy steps for the replacement of a digitizer glass intended for an iDea USA CT702 tablet.

TOOLS:

- [iFixit Opening Tools](#) (1)
 - [Phillips #00 Screwdriver](#) (1)
 - [Tweezers](#) (1)
-

Step 1 — Digitizer Glass



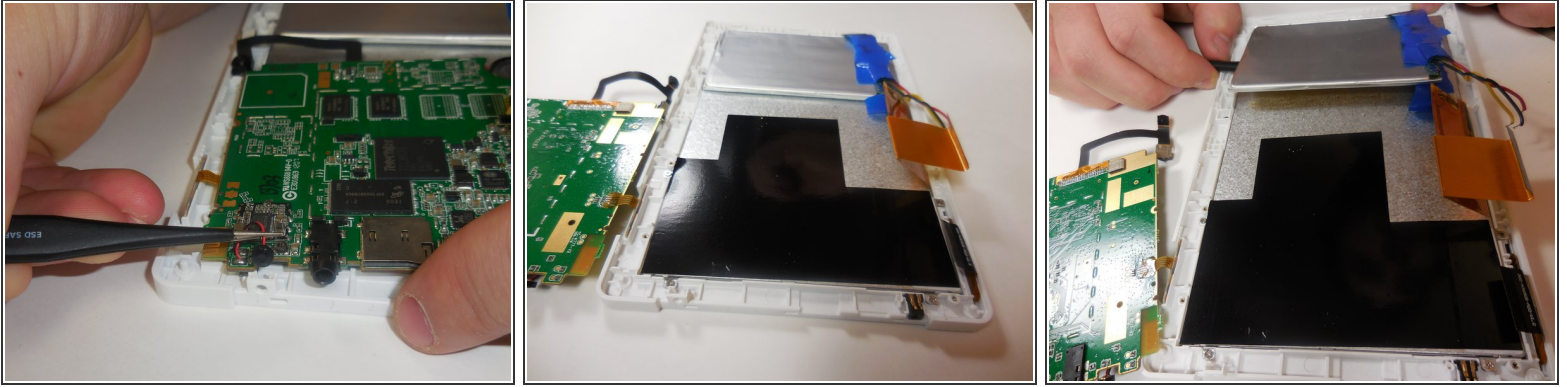
- Place tablet on the table with screen facing upright.
- Starting from the portholes, use plastic opening tool to pry in between the front panel and back cover.
- Follow the opening along the corners and sides until all latches are unclipped.
- Remove back cover completely and place it outside of the work area.

Step 2



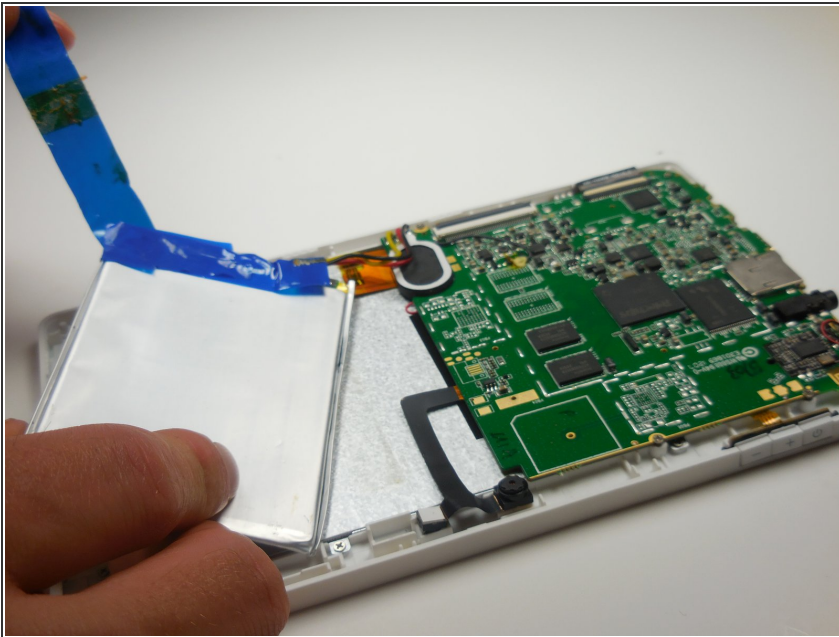
- Place tablet facing down.
- Locate the 4mm screws along the perimeter of the motherboard.
- There should be 4 screws.
- Use Philips screw driver to unscrew each one, and carefully place screws in a safe place.

Step 3



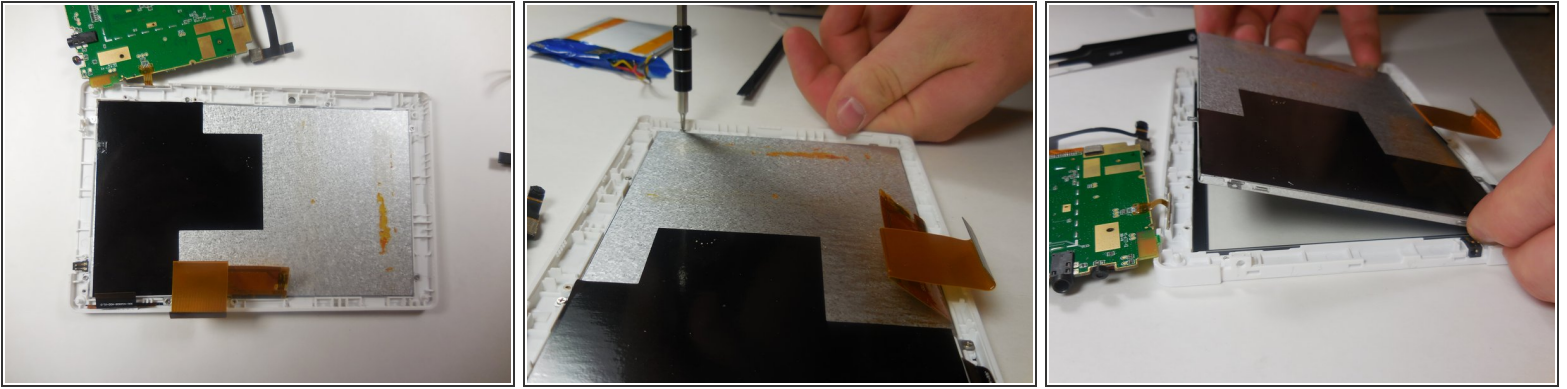
- After screws are removed, gently pull up on the ribbon wire connection to release all 3 wires from the motherboard.
- Safely remove mother board and battery from tablet by using tweezers.
- ⓘ Make sure the small ribbon wires are not damaged when removing larger members.

Step 4



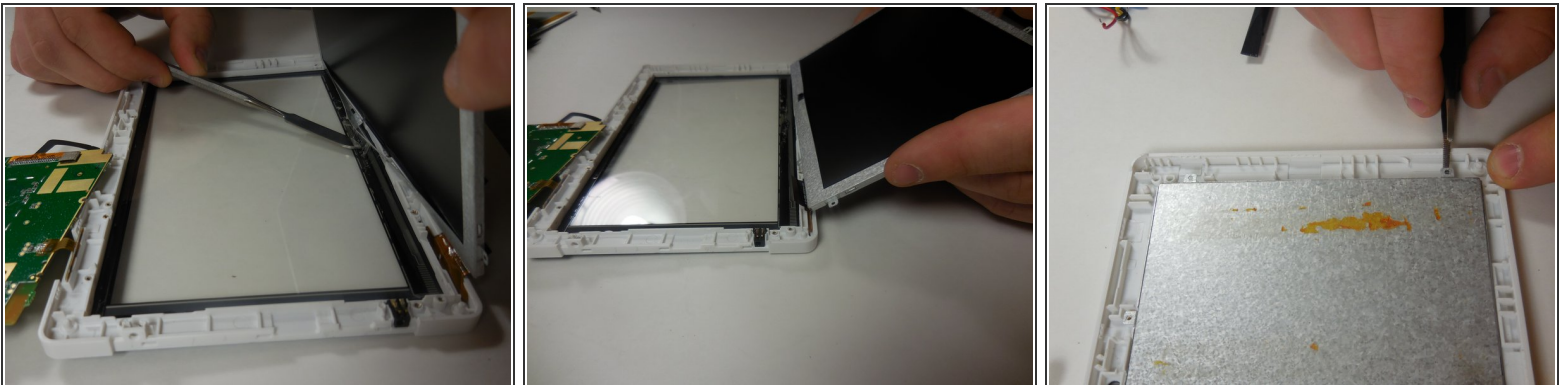
- Remove tape from battery pack, and dispose.
- ⚠ Be careful not to touch the wire/battery connection correctly, as it could result in injury.

Step 5



- After removing the battery pack and motherboard, the touch sensor unit should be visible.
- Use small Philips screw driver to unscrew all 6 of the 2mm screws.
- Use fingers and prying tool to remove the touch sensor unit from frame.

Step 6



- After the touch sensor is detached, only the plastic screen should remain.
- Insert new touch sensor plate into the same position, aligning all screw inputs.
- Insert all six of the 2mm. screws to connect the new touch sensor to the screen frame.

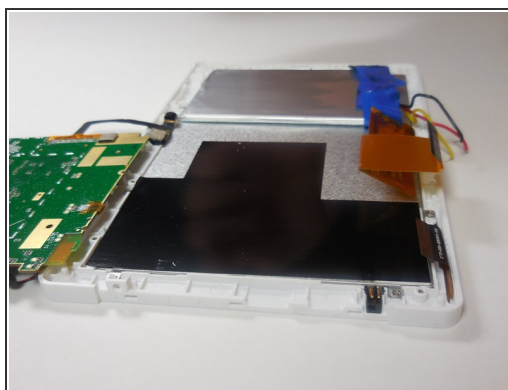
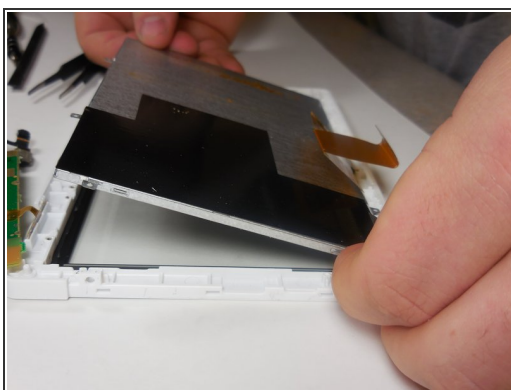
Step 7



- To continue reassembling the tablet, follow the steps in reverse.

⚠ Be careful when reconnecting battery, use safety goggles and gloves.

Step 8



- To reassemble tablet, follow these steps in reverse order.

To reassemble your device, follow these instructions in reverse order.