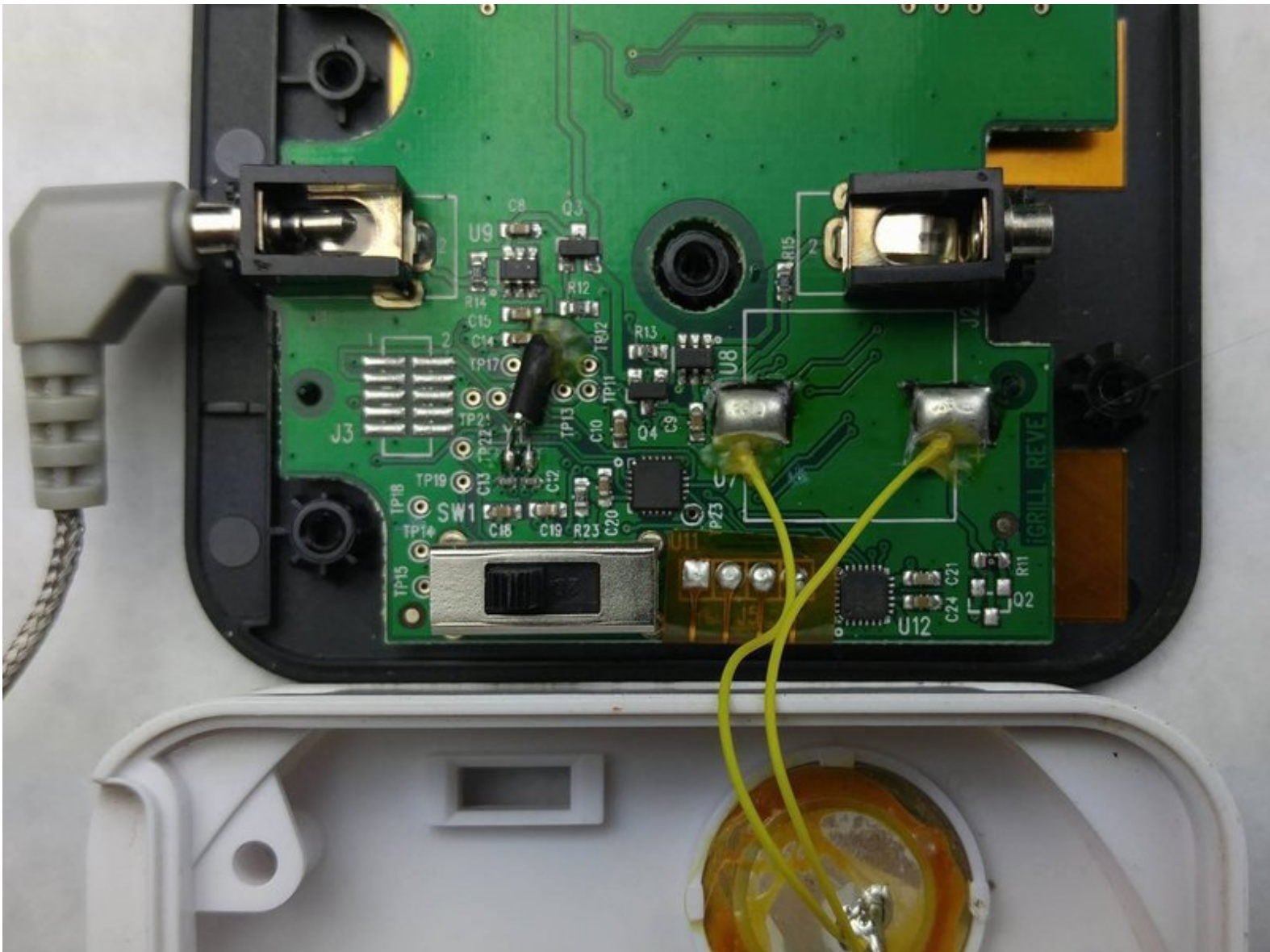




# iDevices iGrill Probe Replacement

This guide will show you how to replace the probes for the iGrill.

Written By: Michelle Nguyen



---

## INTRODUCTION

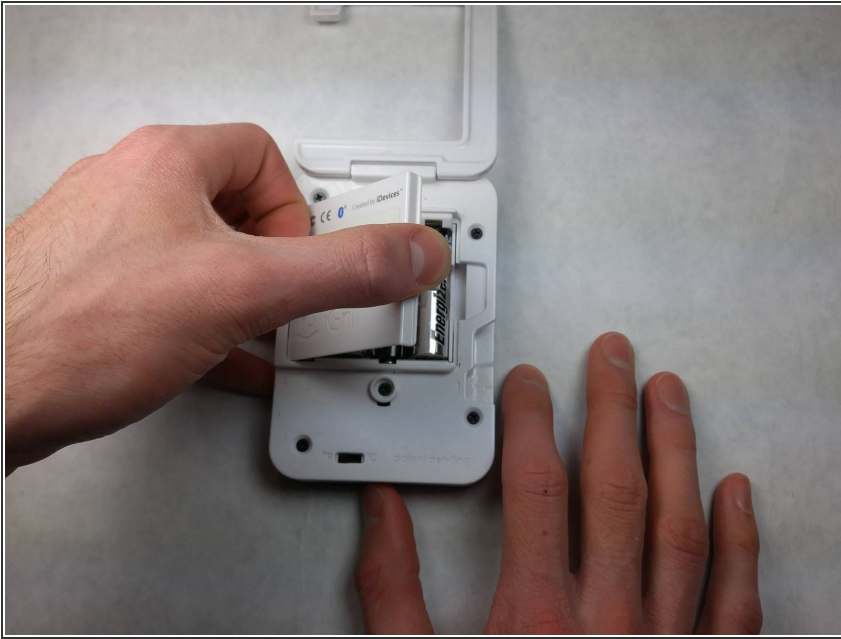
The probes may need to be replaced if your device is not reading the temperature properly. In this guide you will learn how to replace the connectors.

---

### TOOLS:

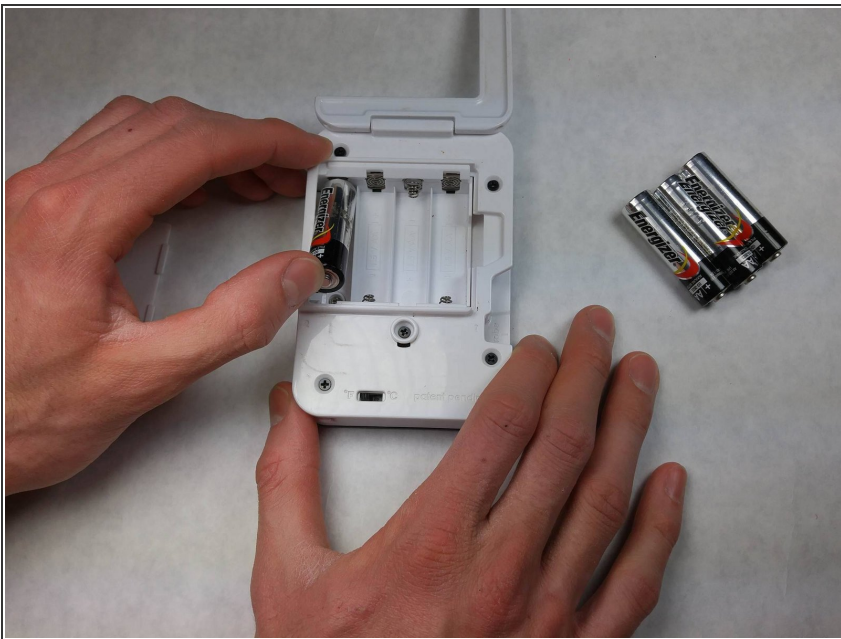
- [Phillips #1 Screwdriver](#) (1)
  - [Fingers](#) (1)
  - [Tweezers](#) (1)
-

## Step 1 — Probes



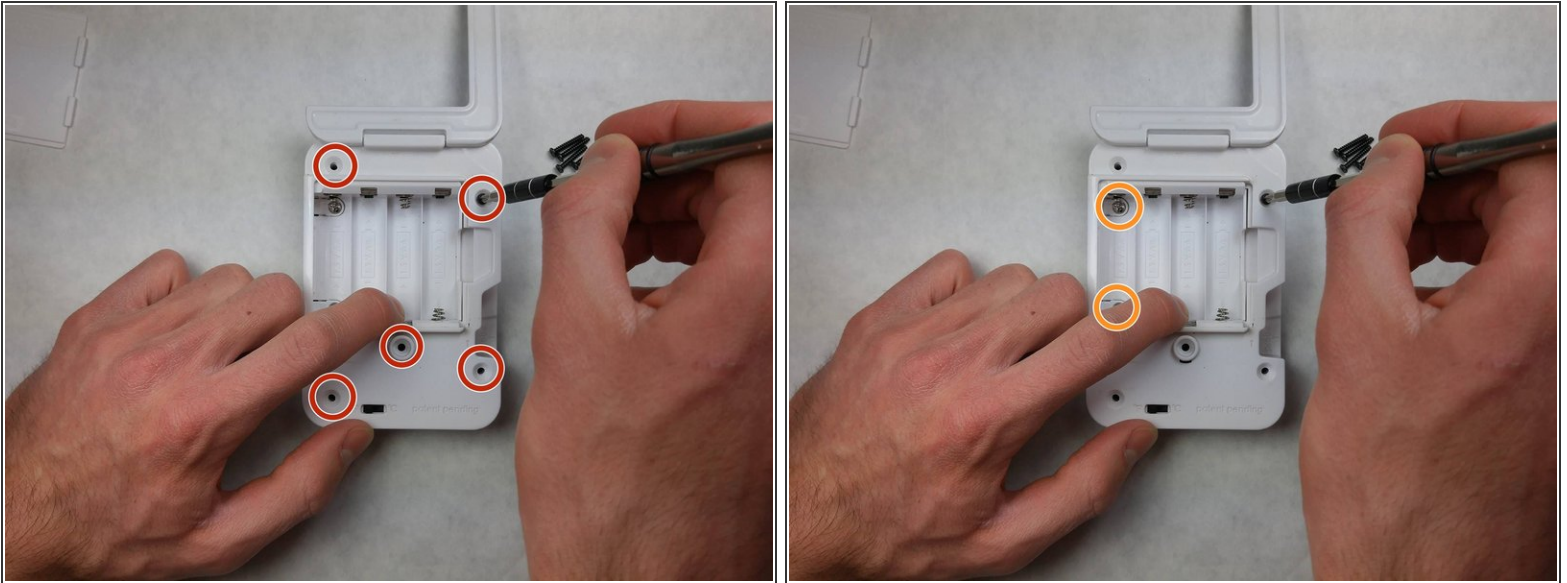
- Remove the back plastic cover from the device; this should allow you access to the batteries.

## Step 2



- Remove the batteries from the device.

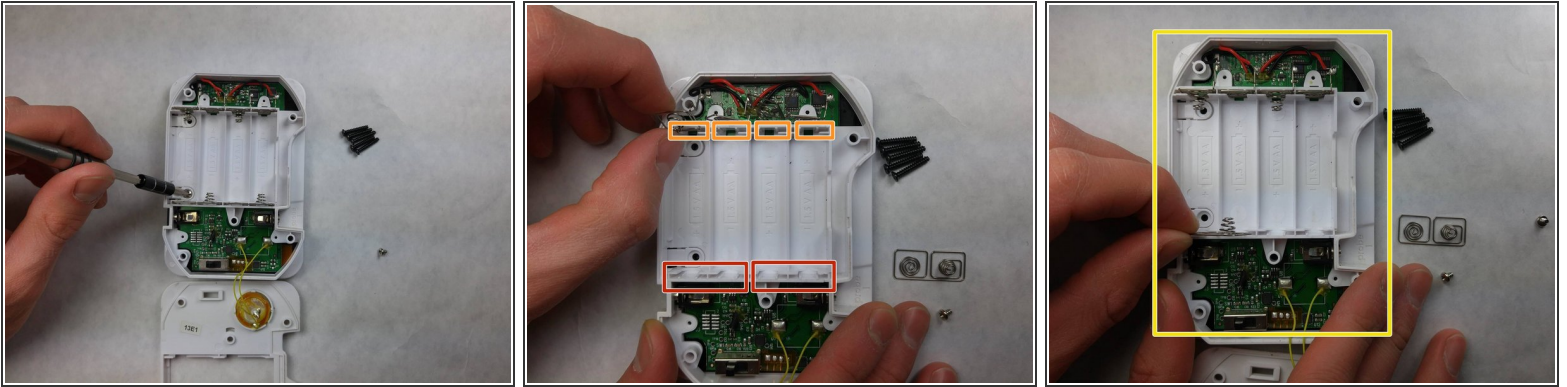
## Step 3



- Remove five black 10 mm Phillips #0 screws from the back side of the device.
- Remove two silver-colored 5 mm screws using a Phillips screwdriver. The screws are located on the left side of the internal cover.
- Remove the accompanying plastic tabs under the screws.
- Gently pull off the back cover from the device.

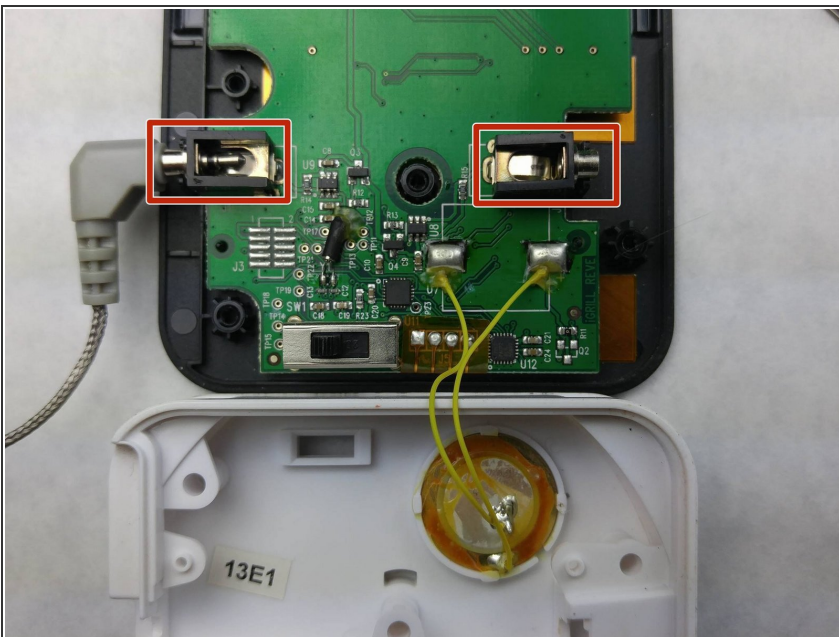


## Step 4



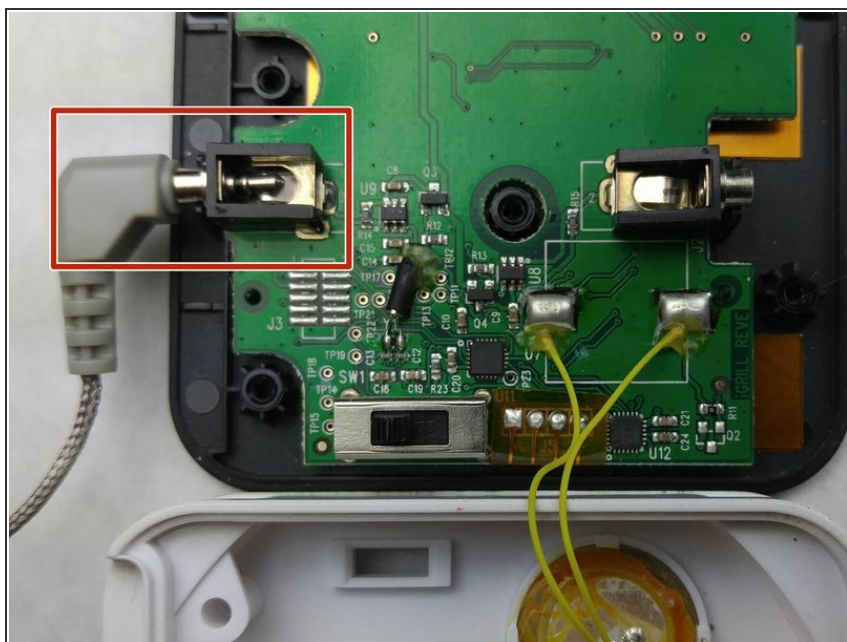
- If you have not removed the 2 silver-colored screws; you must remove them now.
- Remove the metal terminals from the battery slot closest you.
- Pull the remaining metal terminals out of their slots. Position them such that when removing the internal cover they will not be caught.
- Remove the internal cover.

## Step 5



- After the internal plastic case has been removed, you will have access to the probe contacts.
- You should then insert the probes to check their connection to the probe terminals.

## Step 6



- Using a pair of tweezers, bend the probe contacts back in place. The tweezers will touch the probe terminals when inserted.

To reassemble your device, follow these instructions in reverse order.