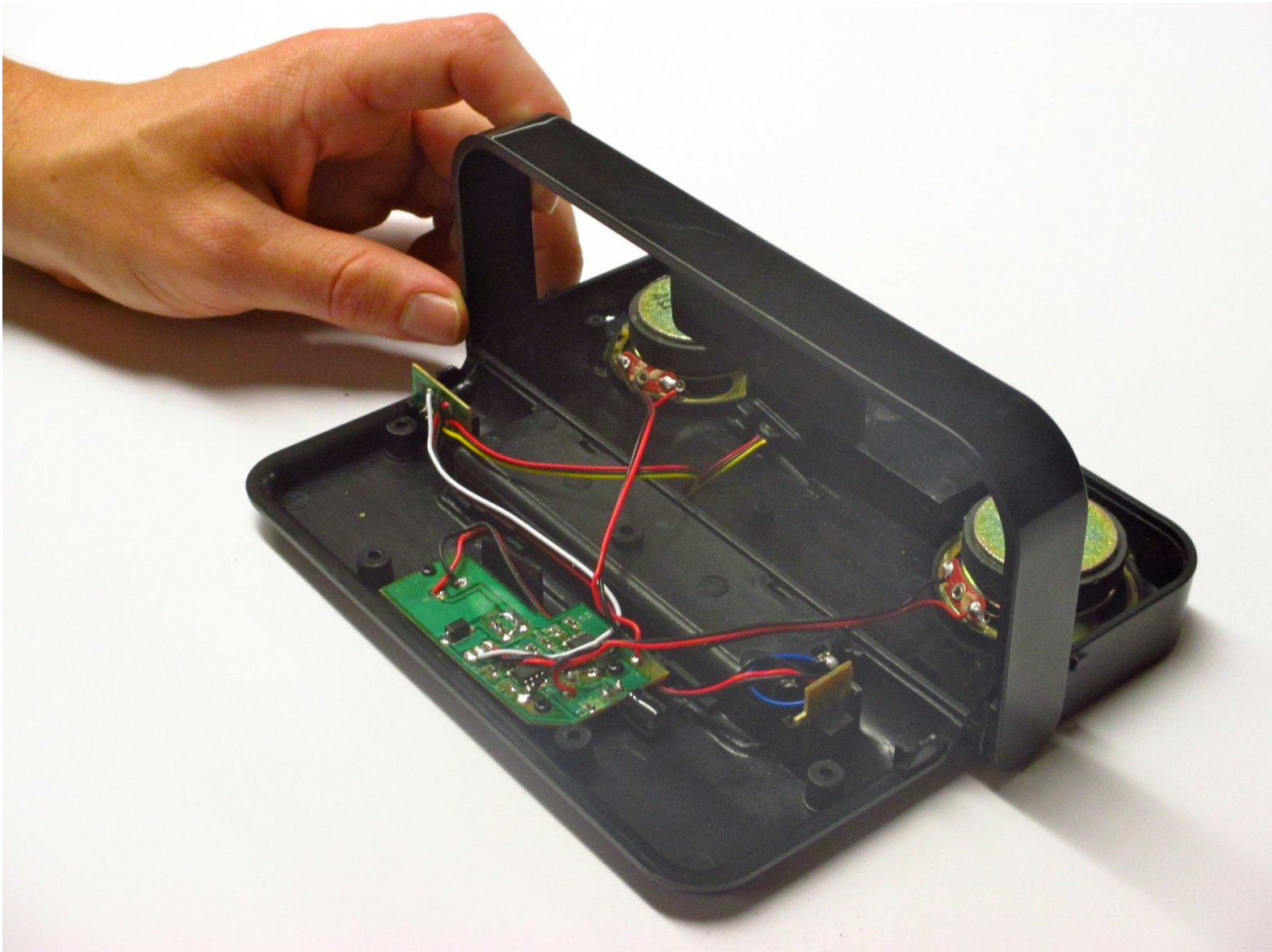




# iHip Fold-Up Portable Speaker Stand Replacement

If the stand used to hold up the speakers is jammed or broken, you can use this guide to replace it.

Written By: Lisa





## TOOLS:

- [Phillips #0 Screwdriver](#) (1)
- [Fingers](#) (1)
- [Small Needle Nose Pliers](#) (1)



## PARTS:

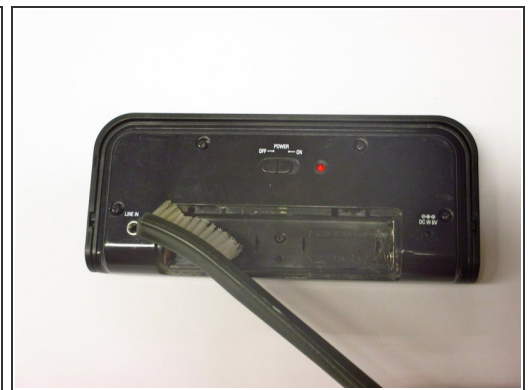
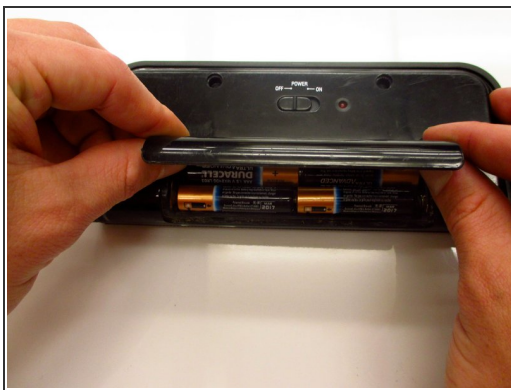
- [iHip portable speaker stand](#) (1)

## Step 1 — Removing the battery case cover



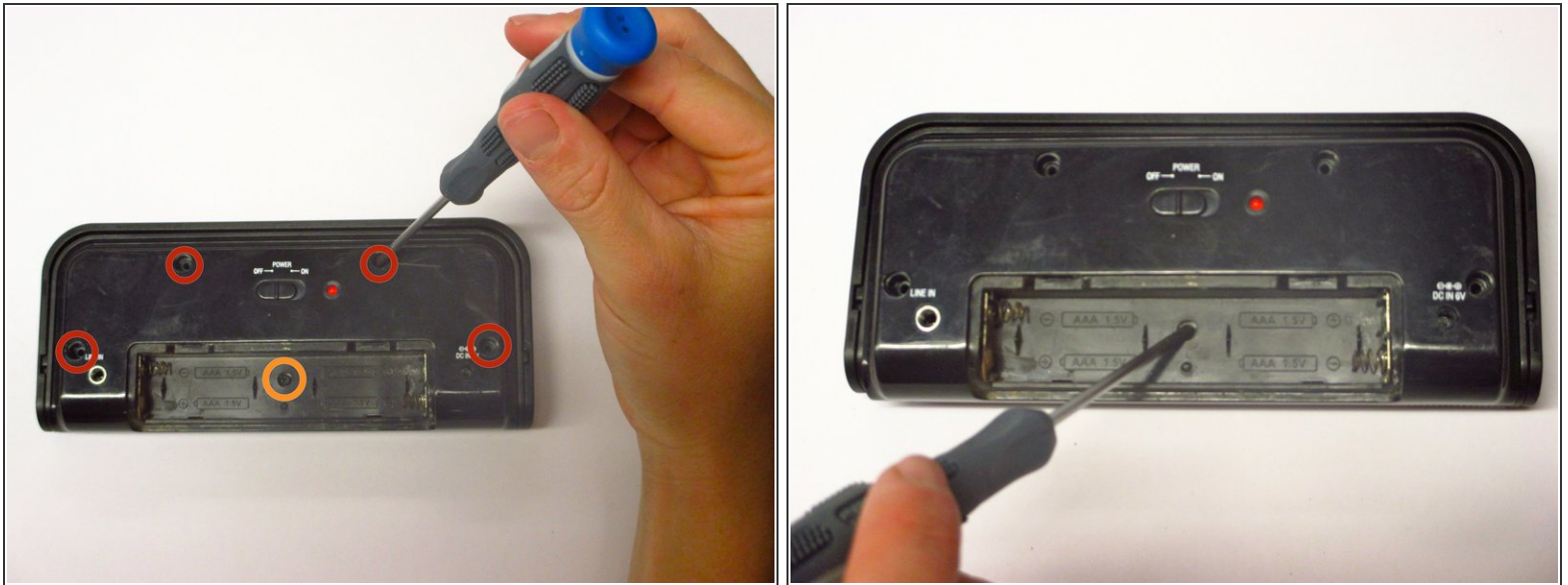
- Use your fingers to slide the battery case cover off in the direction of the arrows.

## Step 2 — Cleaning the battery case



- Remove the four AAA batteries. Be sure to check your nearest battery recycling point!
- ⓘ Use the detailing brush and a paper towel to remove any corrosion left by previous batteries.

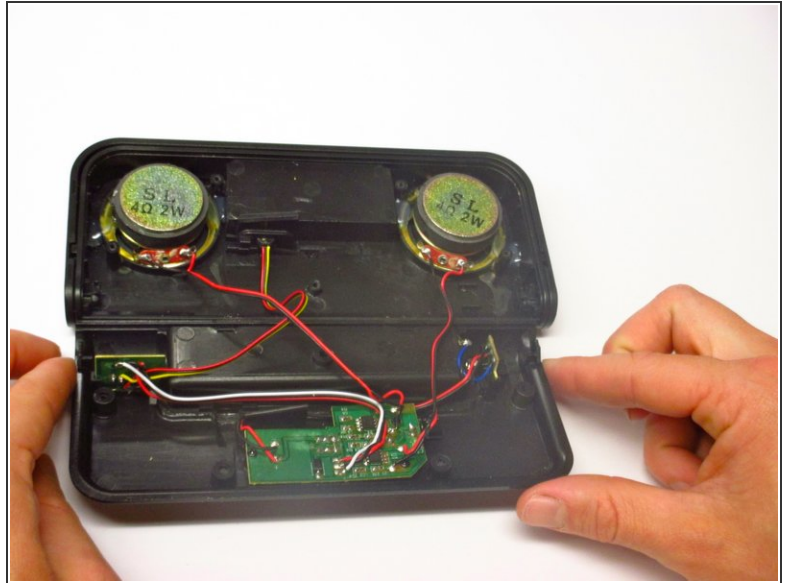
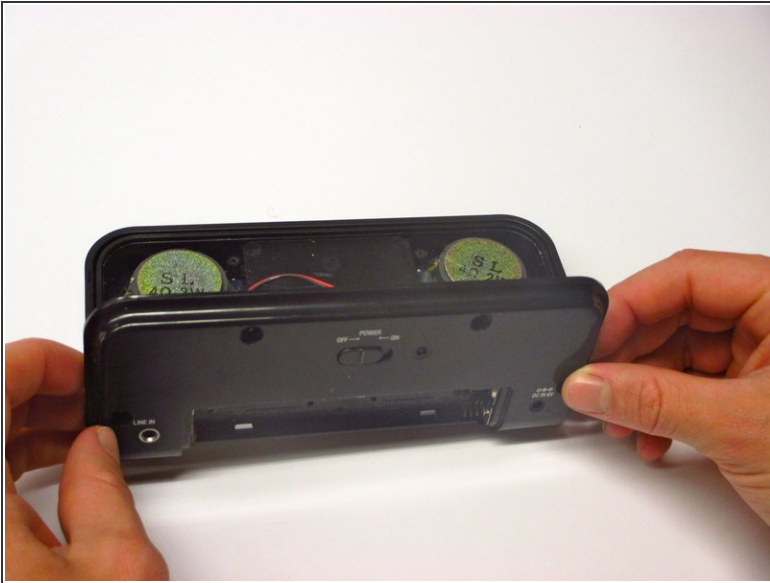
### Step 3 — Removing the screws



- Unscrew the four outer 1.0 mm screws with a Phillips-Head screwdriver.
  - ⓘ Screws will be magnetized in position and will require the use of tweezers to be removed.
- Push down gently on the battery case cover and slide it in the direction the arrows indicate. Remove the batteries.
- Unscrew the 0.6 mm screw located in the center of the battery case.
- Keep the 1.0 mm and 0.6 mm screws separate from each other for reassembly.

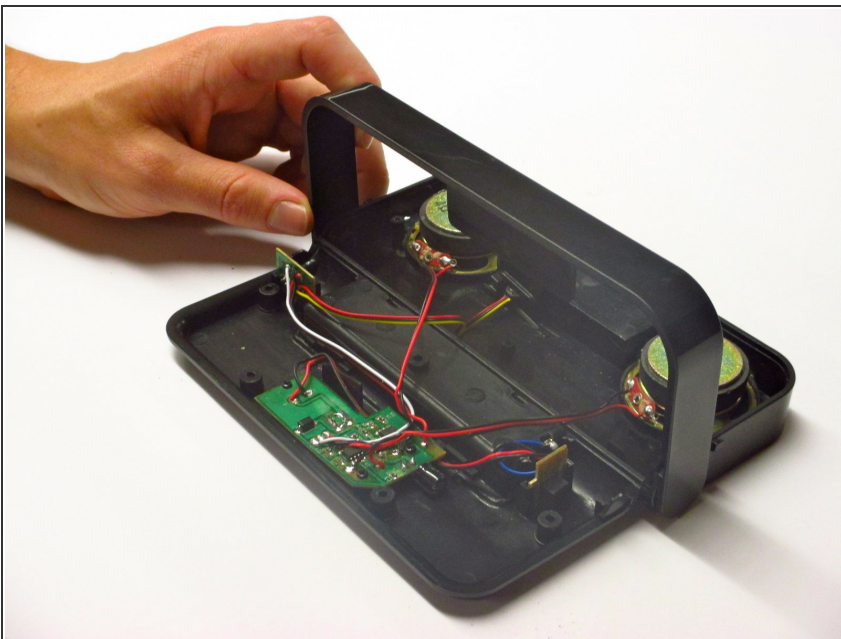


## Step 4 — Removing the back cover



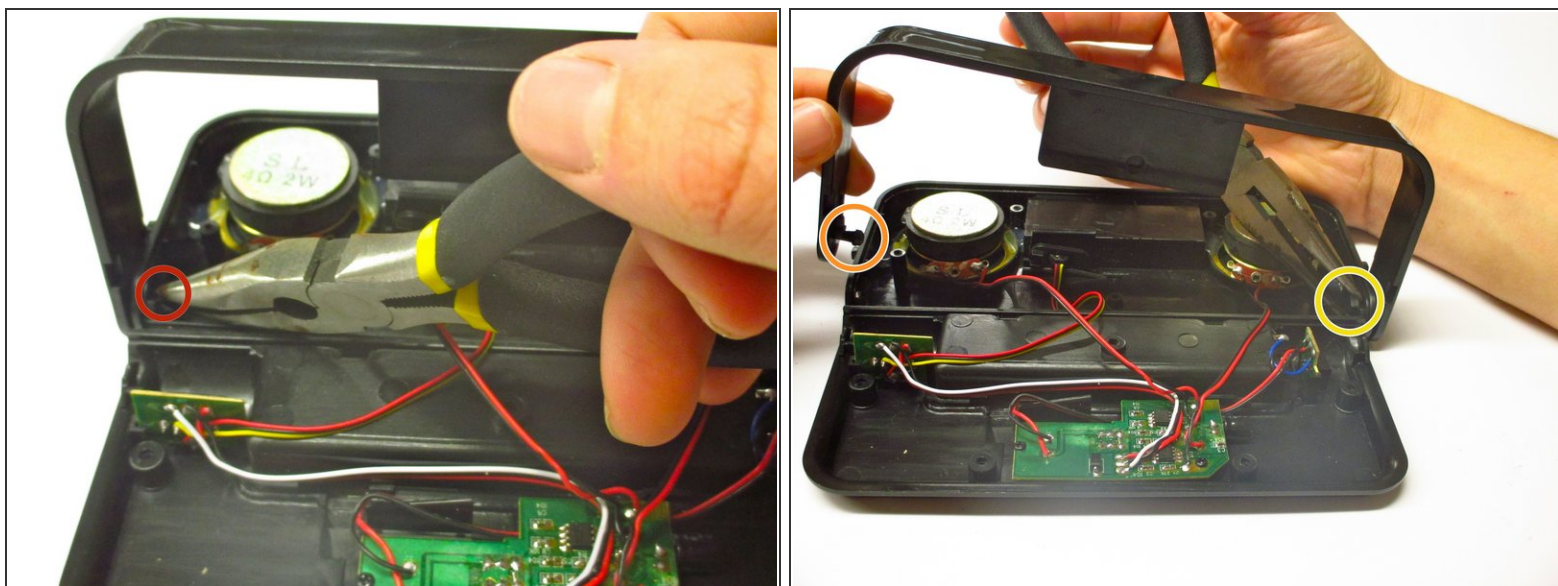
- Remove the back cover carefully; there are many wires that connect it to the device.

## Step 5 — Positioning the Stand



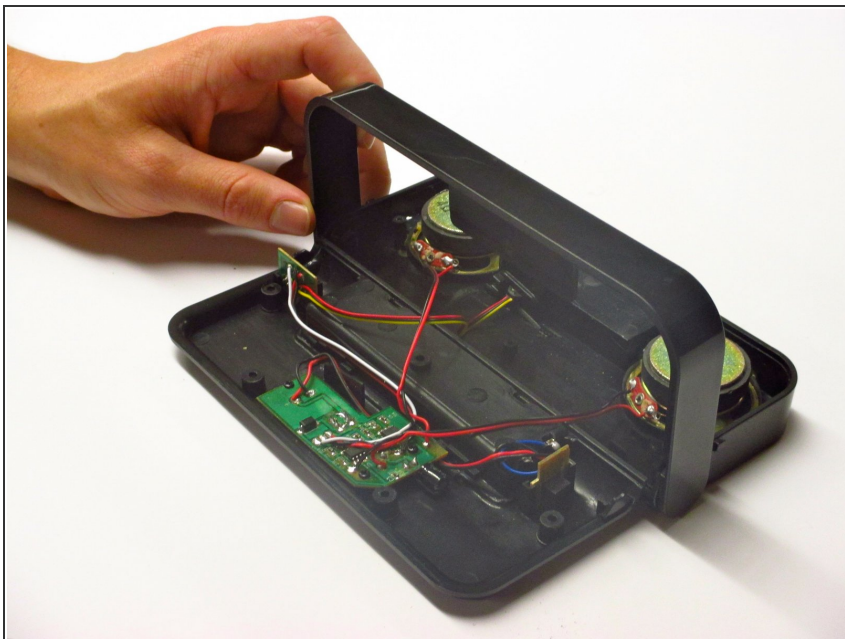
- Pull the stand backwards and around the system.
- ⓘ Make sure the stand is positioned perpendicular to the speaker system.

## Step 6 — Removing the Stand



- Locate the two small connection points for the stand.
- Using small needle nose pliers, pinch the end of the stand toward the side of the speaker case.
- Pop the end of the stand out of the hole in the side of the speaker case.
- Repeat this step for the opposite side of the stand.

## Step 7 — Connecting The New Stand



- 1. Position the new stand perpendicular to the speaker case.
- 2. Align the bulbs at the end of the stand with the holes in the side of the speaker case.
- 3. Gently push the bulbs into the holes of the speaker case.
- 4. Pull the stand back around the speaker system.

To reassemble your device, follow these instructions in reverse order.