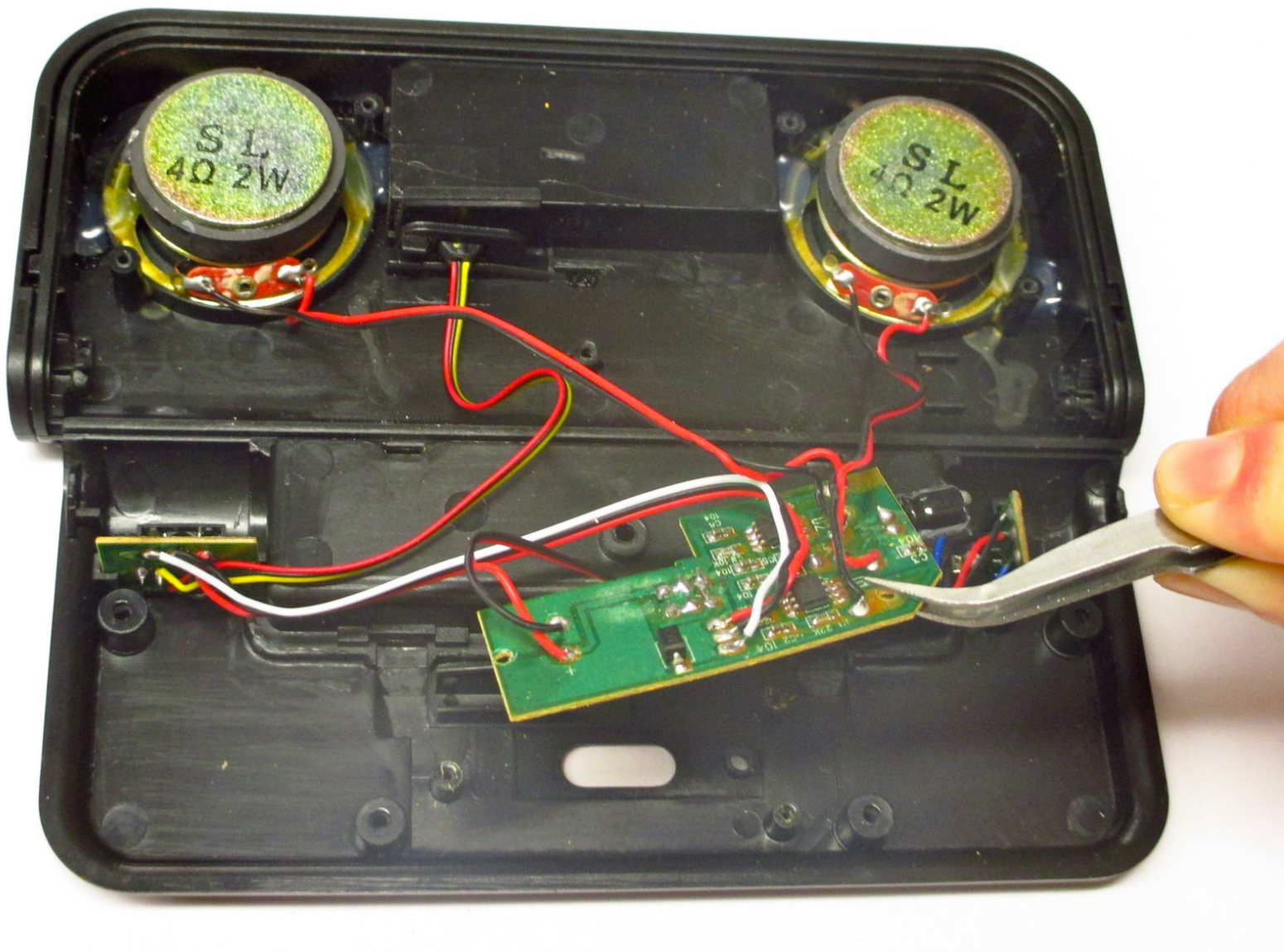




iHip Fold-up Portable Speaker Motherboard Replacement

Refer to this guide if the motherboard is not functioning correctly and requires replacement.

Written By: Amanda



INTRODUCTION

This guide will walk you through how to replace the motherboard of the iHip Fold-Up Portable Speaker.



TOOLS:

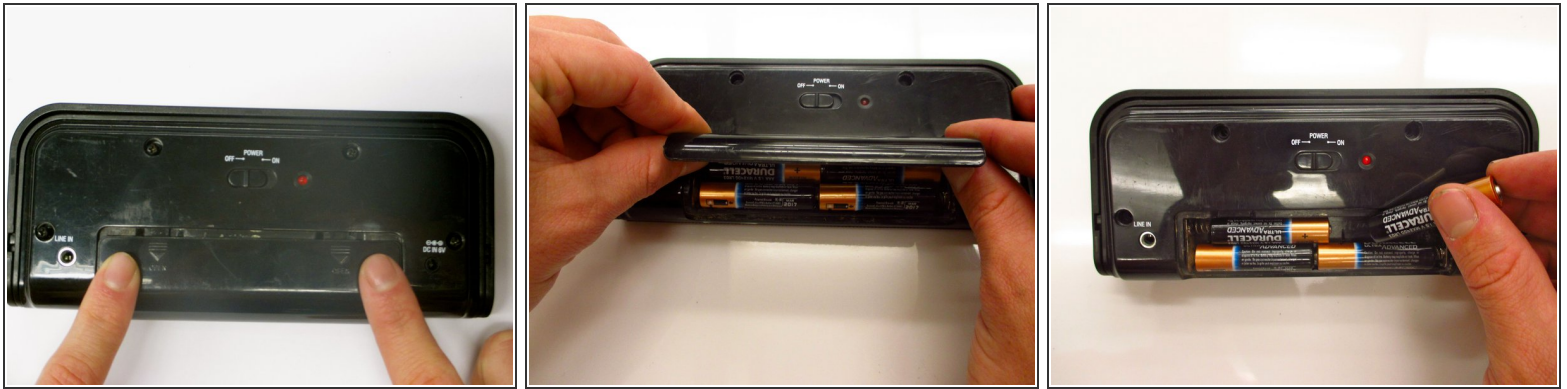
- [Phillips #1 Screwdriver](#) (1)
- [Tweezers](#) (1)
- [Portable Soldering Iron](#) (1)
- [Utility Scissors](#) (1)
- [Soldering Wire](#) (1)



PARTS:

- [iHip Portable Speaker Motherboard](#) (1)

Step 1 — Motherboard



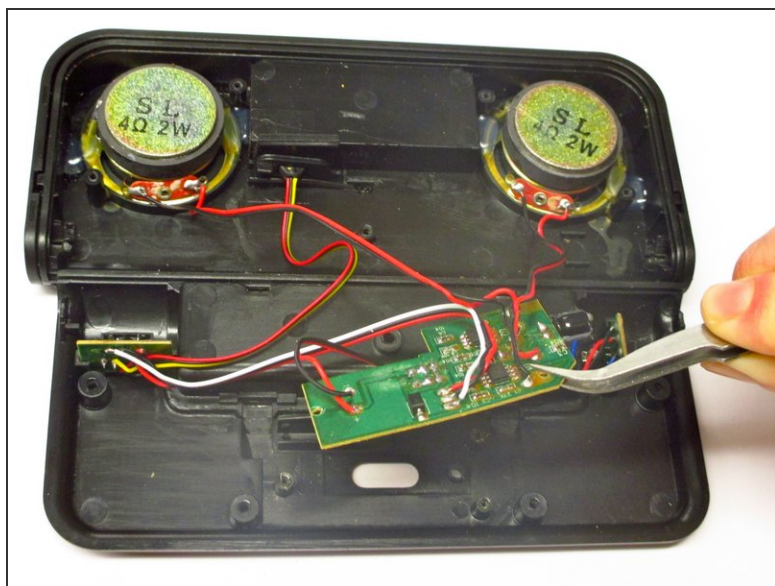
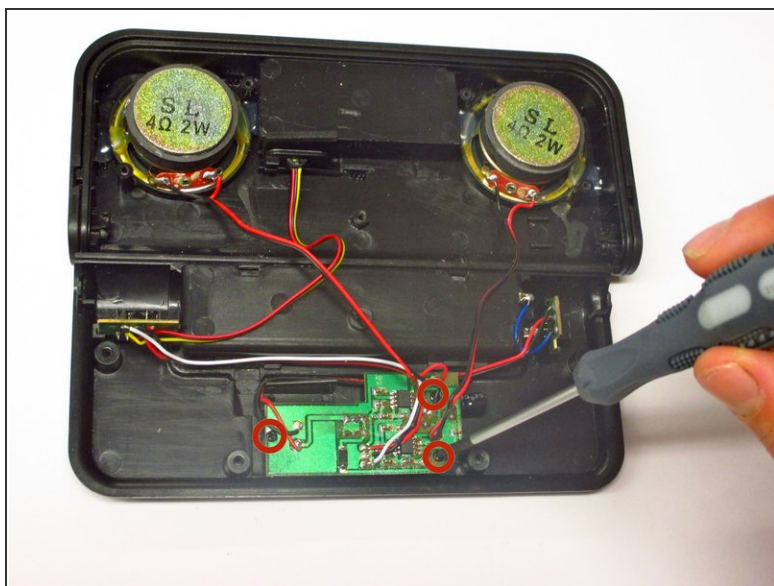
- Place the device on a flat surface as shown.
- Remove the battery case cover and batteries.

Step 2



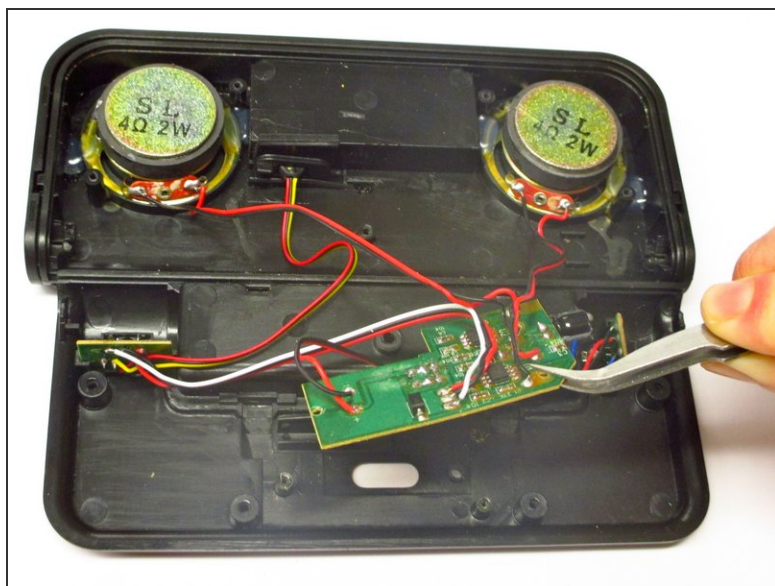
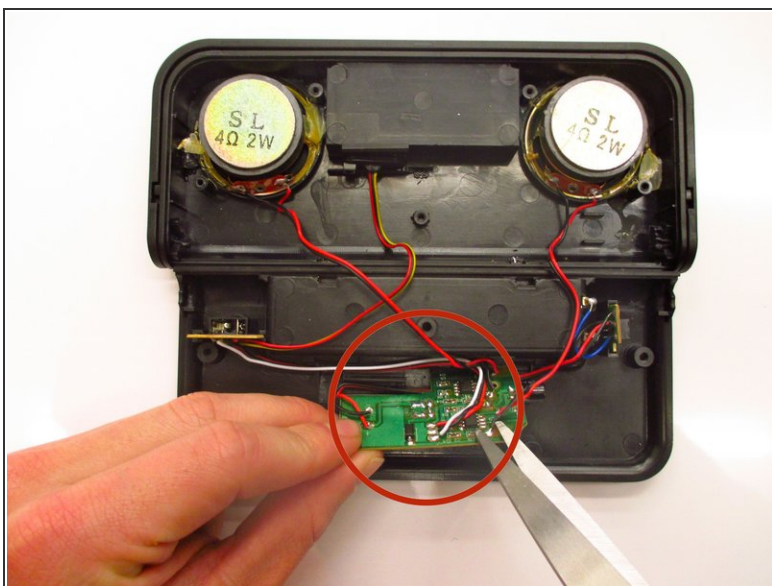
- Using a Phillips-Head #1 screwdriver, unscrew the four outer 1.0 mm screws and remove with tweezers.
- Unscrew the 0.6 mm screw located in the center of the battery case.
- Remove the back cover carefully; there are many wires that connect it to the device.
- ⓘ Keep the 1.0 mm and 0.6 mm screws separate from each other for reassembly.

Step 3 — Unscrewing the Motherboard



- i Observe the location of the motherboard at the bottom center of the back cover.
- Using a Phillips-Head #1 screwdriver, carefully unscrew all three 0.4 mm screws from the indicated locations. Set aside for reassembly.
- Using tweezers, gently remove the motherboard from the back cover of the device.

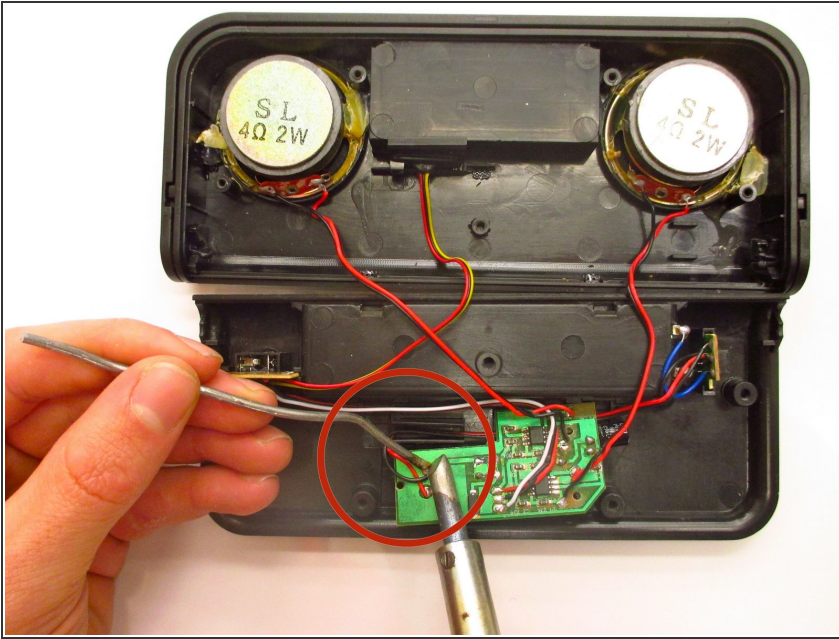
Step 4 — Cutting the Wires



i Note the connection point of each wire to the motherboard.

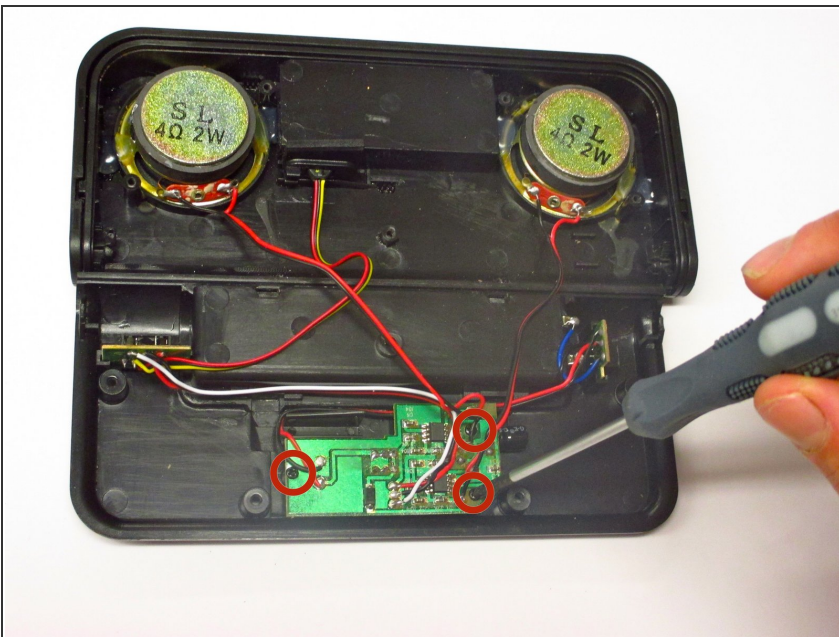
- Using utility scissors, cut all the wires connecting the motherboard to the device.
- Using tweezers, place the new motherboard in the exact position of the old motherboard.

Step 5 — Soldering the Wires



- ⚠ Read the manufacturer instructions for your specific soldering iron before use. Follow all safety instructions and solder at your own risk.
- Position a strip of solder at the point of contact between the motherboard and each individual wire.
- Solder the wires to the motherboard. Make sure to follow the manufacturer's instructions, as well as general soldering safety principles.

Step 6 — Securing the New Motherboard



- Using a Phillips-Head #1 screwdriver, screw the original 0.4 mm screws into the correct places to secure the motherboard back in place.

To reassemble your device, follow these instructions in reverse order.