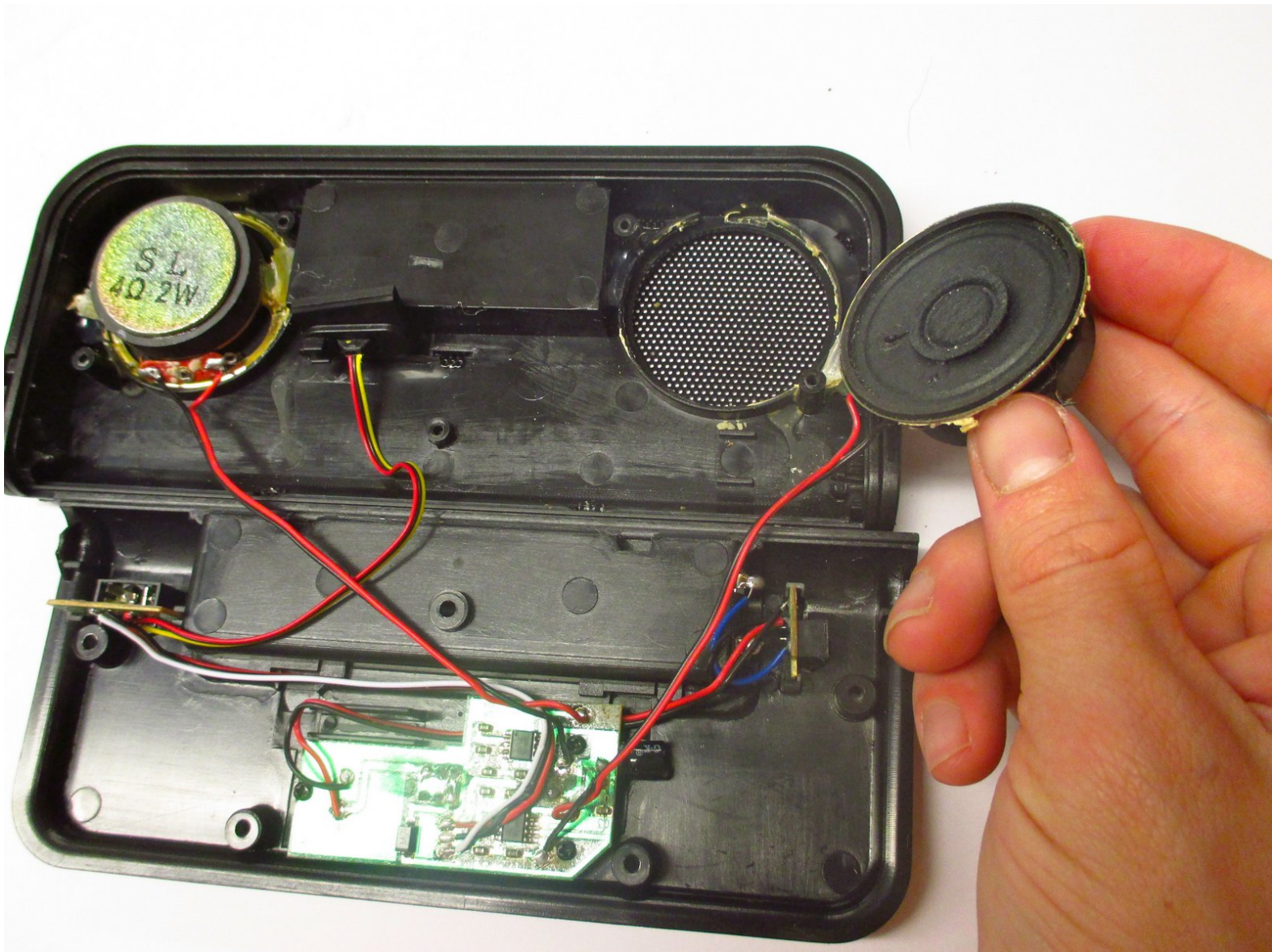




iHip Fold-up Portable Speaker Replacement

Use this guide to replace individual speakers in the iHip Fold-up Portable Speaker.

Written By: Lisa



INTRODUCTION

Use the following steps to replace an individual speaker out of the iHip Fold-up Portable Speaker. The issue usually arises from a speaker with distorted audio.



TOOLS:

- [Phillips #0 Screwdriver](#) (1)
- [Fingers](#) (1)
- [Portable Soldering Iron](#) (1)
- [Glue Gun](#) (1)



PARTS:

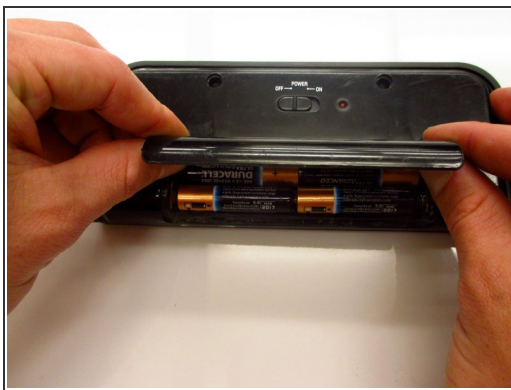
- [iHip individual speakers](#) (1)

Step 1 — Removing the battery case cover



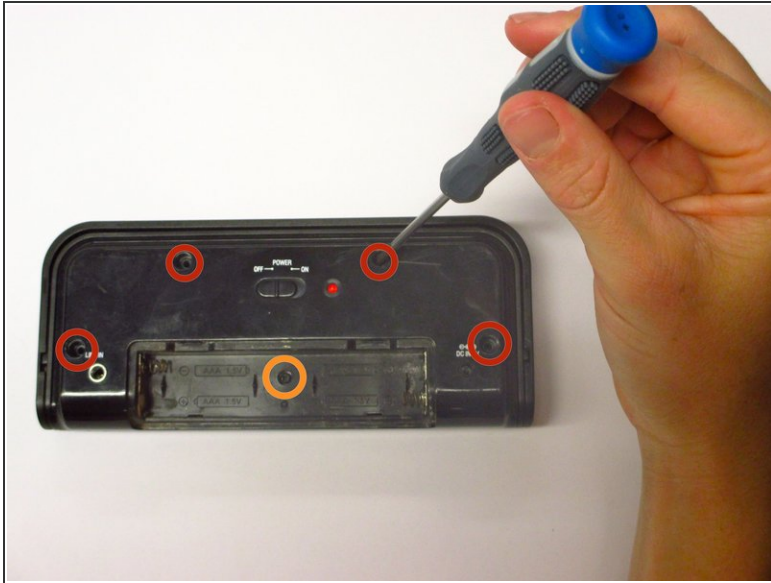
- Use your fingers to slide the battery case cover off in the direction of the arrows.

Step 2 — Cleaning the battery case



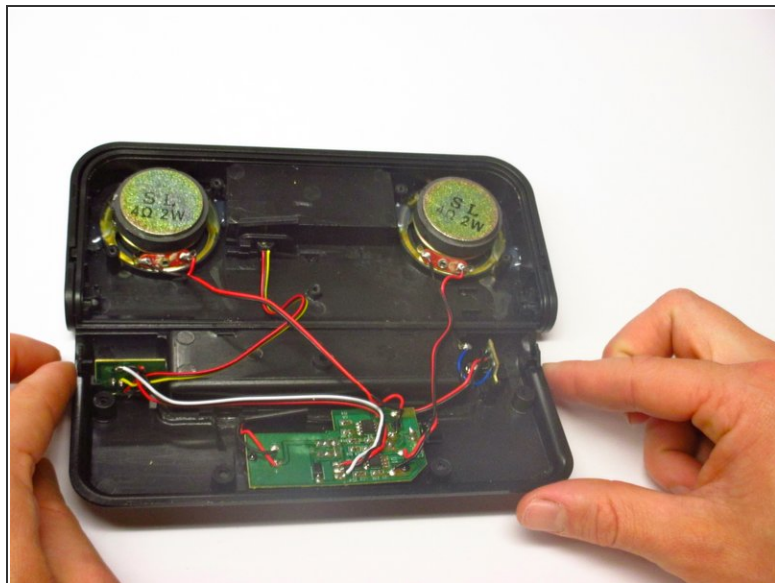
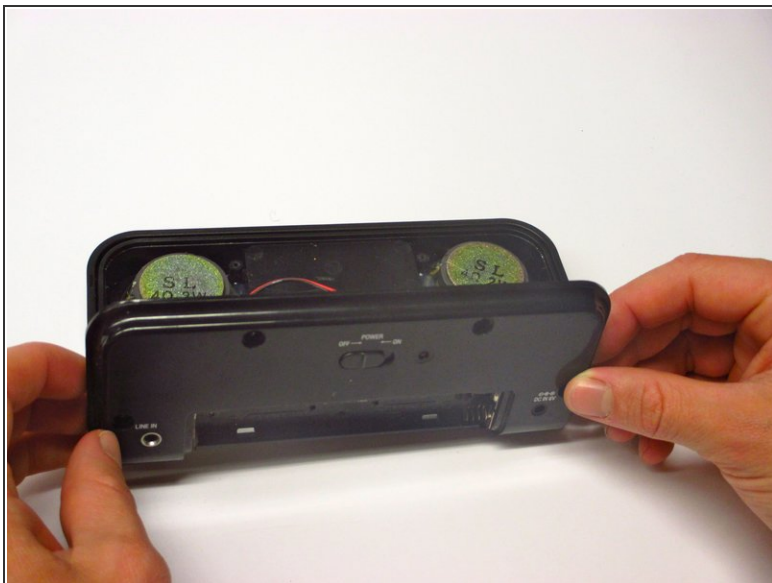
- Remove the four AAA batteries. Be sure to check your nearest battery recycling point!
- ⓘ Use the detailing brush and a paper towel to remove any corrosion left by previous batteries.

Step 3 — Removing the screws



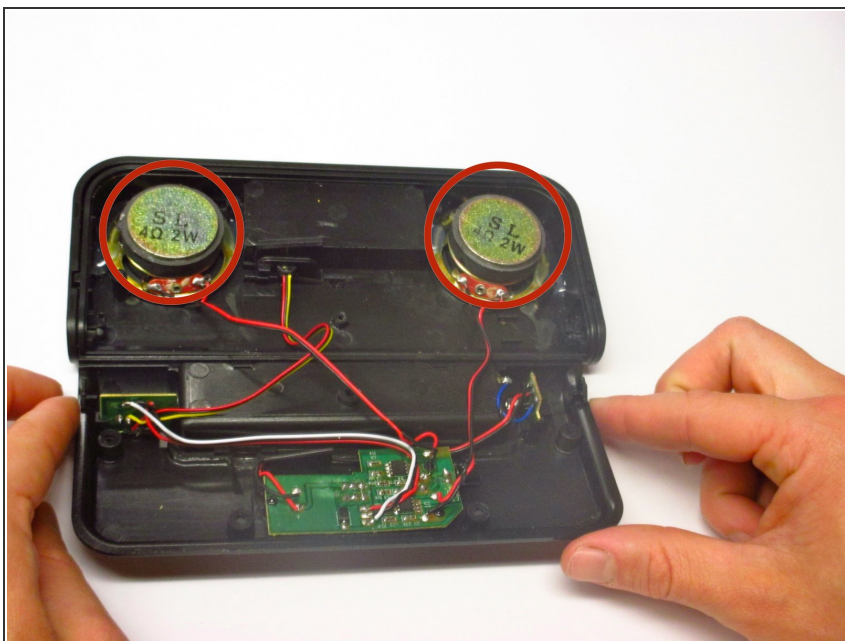
- Unscrew the four outer 1.0 mm screws with a Phillips-Head screwdriver.
 - ⓘ Screws will be magnetized in position and will require the use of tweezers to be removed.
- Push down gently on the battery case cover and slide it in the direction the arrows indicate. Remove the batteries.
- Unscrew the 0.6 mm screw located in the center of the battery case.
- Keep the 1.0 mm and 0.6 mm screws separate from each other for reassembly.

Step 4 — Removing the back cover



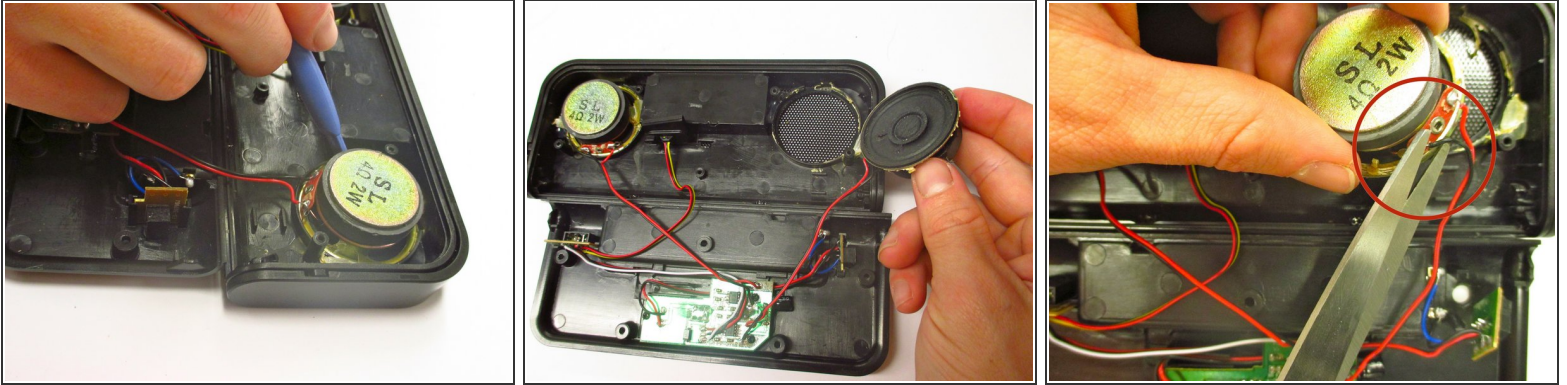
- Remove the back cover carefully; there are many wires that connect it to the device.

Step 5 — Locating Speakers



- Locate the two individual speakers on either side of the front cover.

Step 6 — Removing Individual Speakers



- Use a plastic opening tool to scrape off the glue around the speakers.
 - Gently pull the speaker up to detach it from the front cover.
 - [Desolder](#) the black and red wires from the speaker unit.
- ☒ Use a hot glue gun to secure the new speaker. Solder the black and red speaker wires back in place.

To reassemble your device, follow these instructions in reverse order.