



iHome IH11 Control Buttons Replacement

Install the silver control buttons on your iHome if they are damaged.

Written By: Courtney Steinberg



INTRODUCTION

This guide will show how to install new control buttons. For help troubleshooting click the link to our troubleshooting page [iHome IH11 Troubleshooting](#).

TOOLS:

- [Phillips #1 Screwdriver](#) (1)
-

Step 1 — Outer Case



- Unscrew the two 9.0 mm screws with the Phillips #1 screwdriver.
- Remove the translucent bottom case.

Step 2



- Remove the two 9.0mm screws on the back of the iHome with the Phillips #1 screwdriver.
- Repeat the previous step for the two screws on the bottom.

Step 3



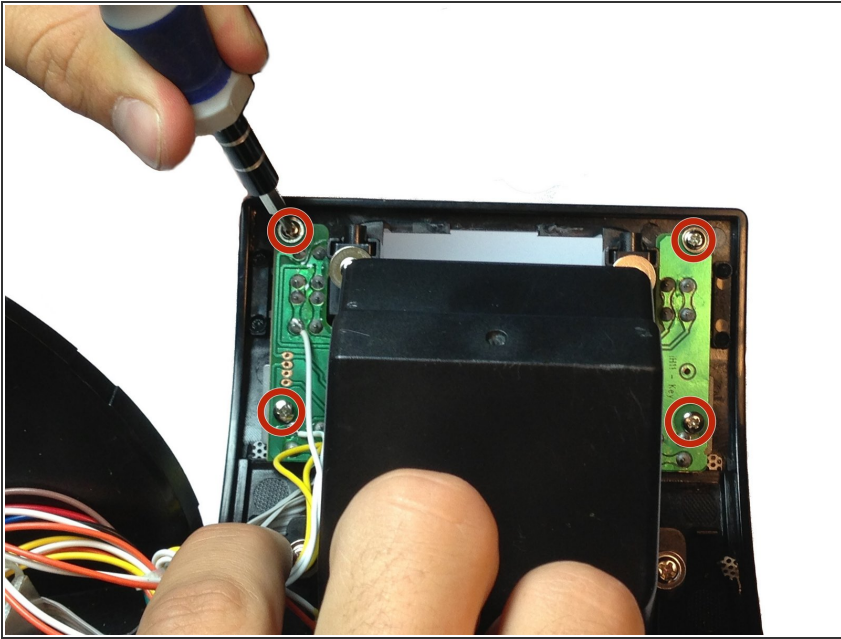
- Remove the two 9mm screws from the top of the iHome with a Phillips #1 Screwdriver.

Step 4



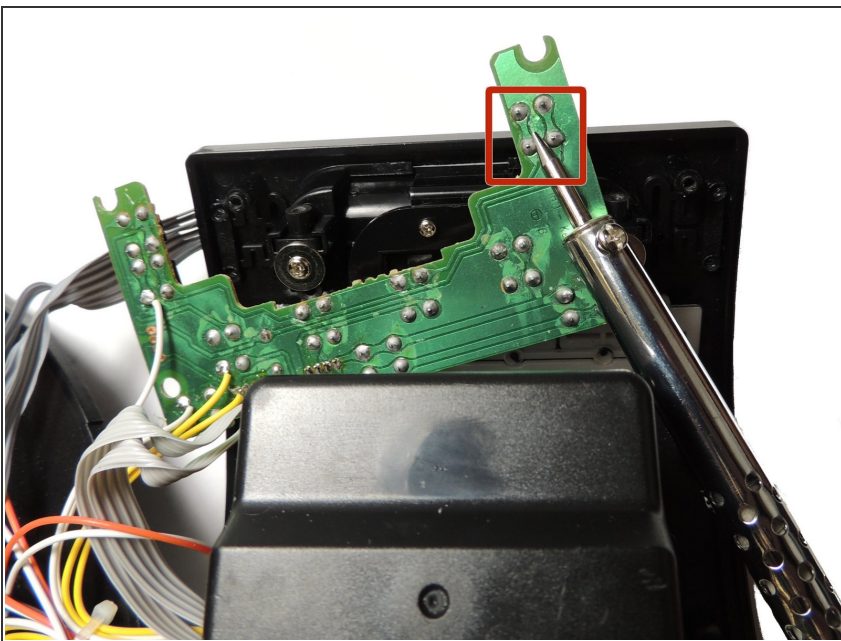
- Pop the dock connector out of the iHome and gently pull the white plastic plug from the dock connector.

Step 5



- Carefully pull apart the device.
- Remove the four screws that hold the circuit board for the buttons.

Step 6



- Desolder the four connections for the broken button.
- Solder the new button in the place of the old one.
- ⓘ For more information about soldering, refer to the soldering device page. [Soldering Skills](#)

To reassemble your device, follow these instructions in reverse order.