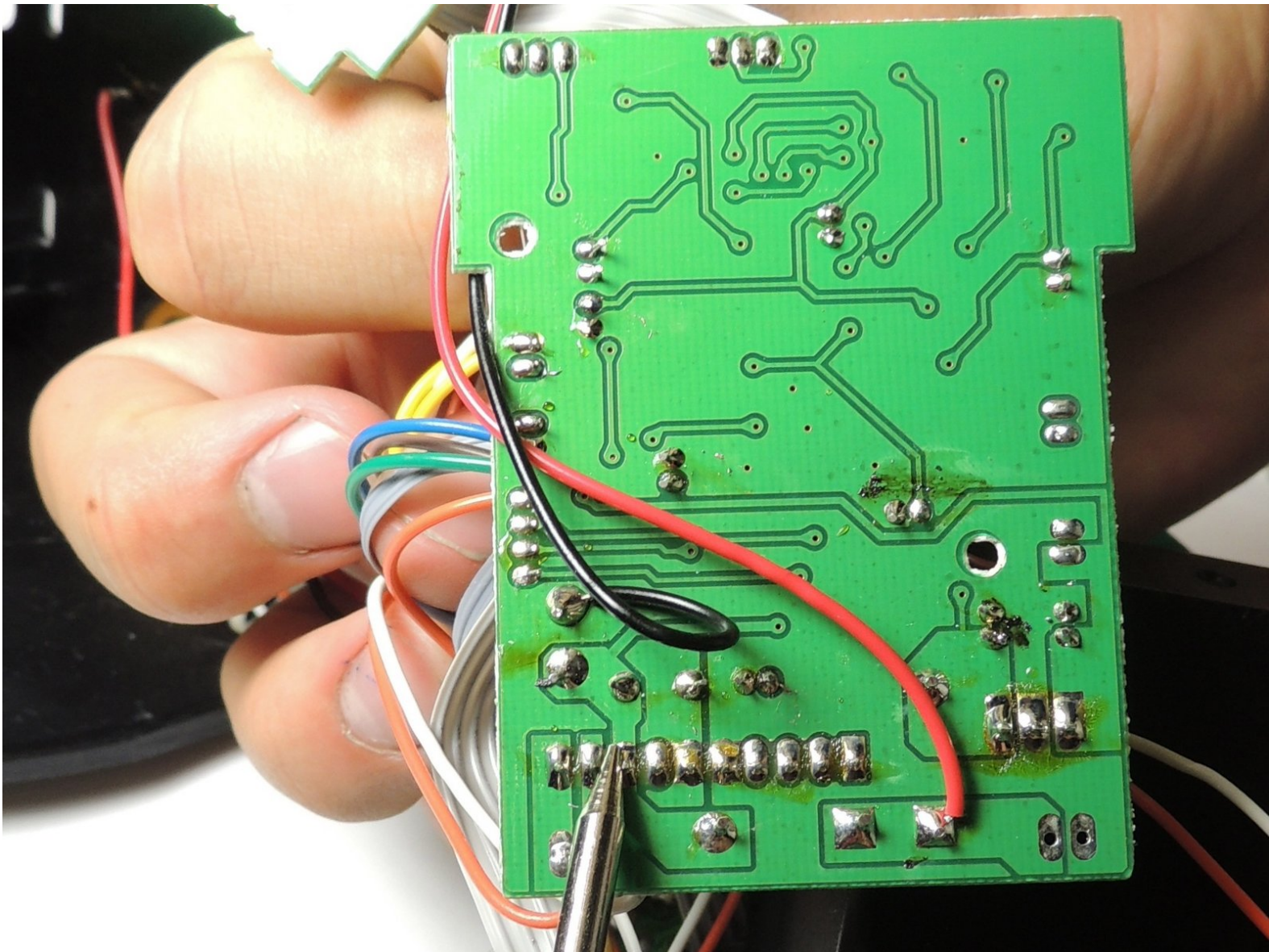




iHome IH11 Main Motherboard Replacement

Dissassemble your iHome to remove and install the main motherboard.

Written By: Courtney Steinberg



INTRODUCTION

This guide will show how to install a new mother board in the iHome. For help troubleshooting click the link to our troubleshooting page [iHome IH11 Troubleshooting](#).



TOOLS:

- [Phillips #1 Screwdriver](#) (1)
 - [Soldering Workstation](#) (1)
-

Step 1 — Outer Case



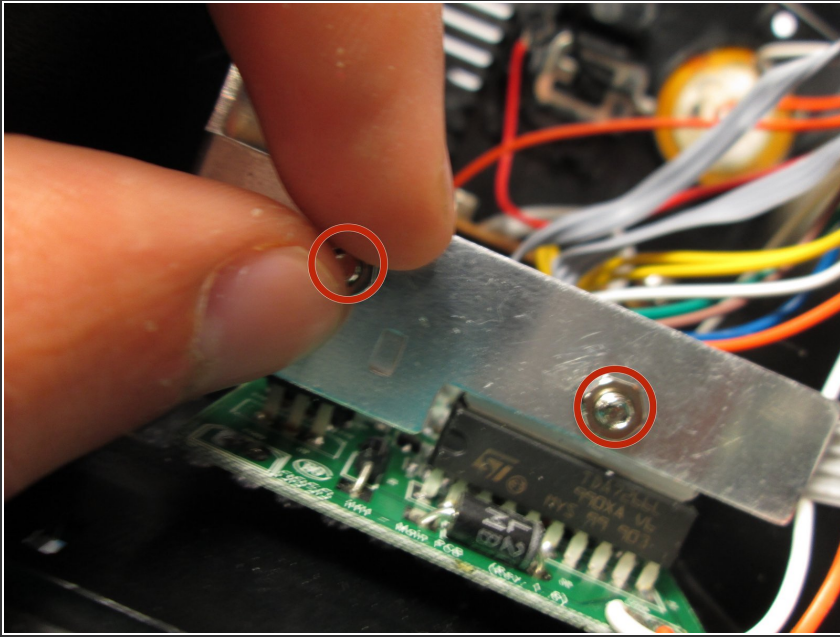
- Unscrew the two 9.0 mm screws with a Phillips #1 screwdriver.
- Remove the translucent bottom case.

Step 2



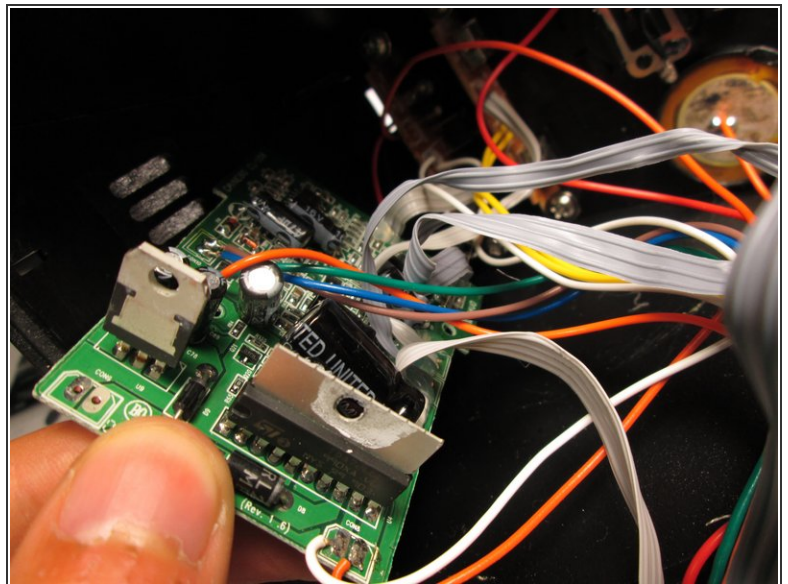
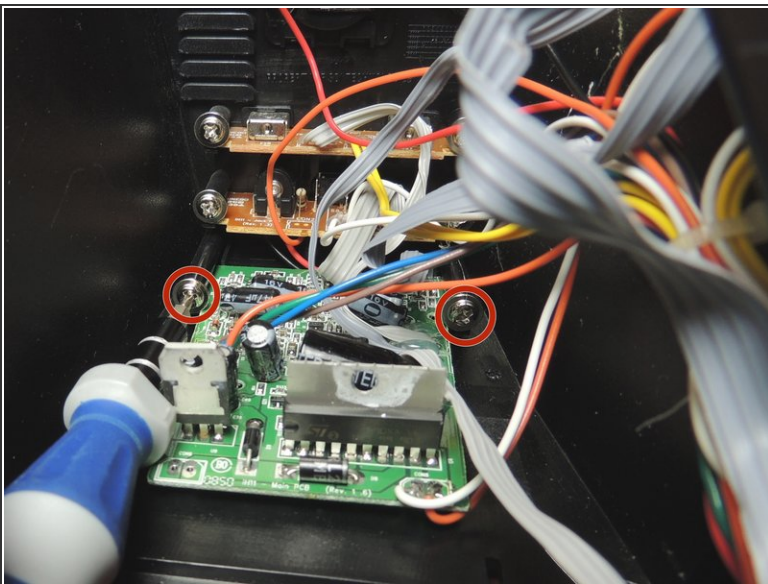
- Remove the two Phillips #1 9.0mm screws on the back of the iHome.
- Repeat the previous step for the two 9.0mm screws on the bottom.
- ⚠ Carefully slide the back cover off. There are wires connected to the back cover.

Step 3



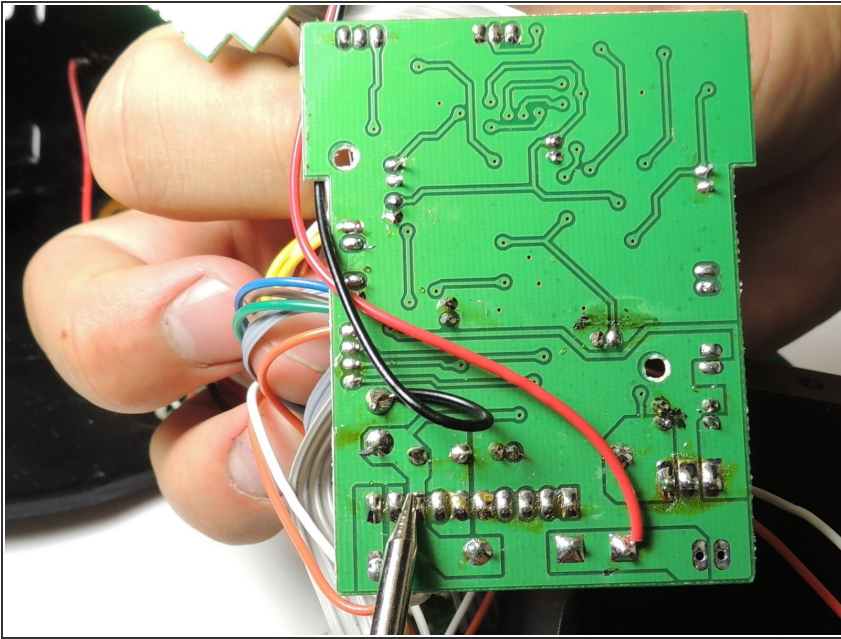
- Remove the aluminum bracket by loosening the two nuts and removing the 8.0 mm bolts.
- Pull the bracket out.

Step 4



- Remove the two 12.0mm screws that hold the motherboard with a Phillips #1 screwdriver.
- Slide the motherboard gently out.

Step 5



- Solder each wire to corresponding input on the motherboard.

To reassemble your device, follow these instructions in reverse order.