



iHome iAVS16 LCD (Display) Replacement

Guide for removing the LCD display on the iHome iAVS16.

Written By: Marco Sousa



INTRODUCTION

This guide will show you how to disassemble the iHome iAVS16 to access and replace the LCD display.



TOOLS:

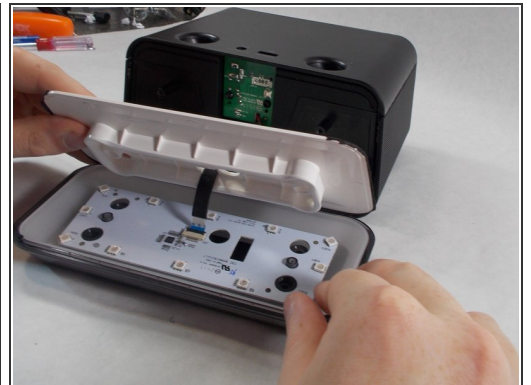
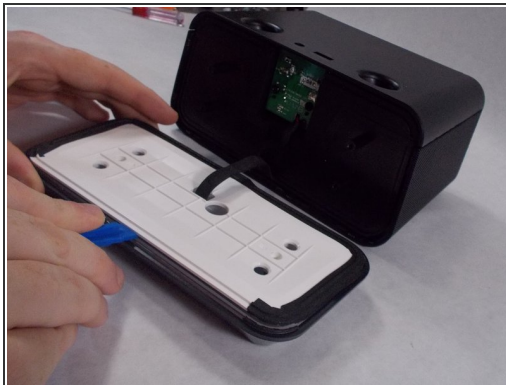
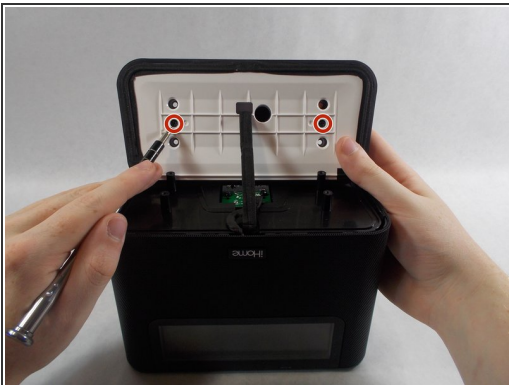
- [iFixit Opening Tools](#) (1)
 - [Phillips #0 Screwdriver](#) (1)
 - [Tweezers](#) (1)
-

Step 1 — Power Board



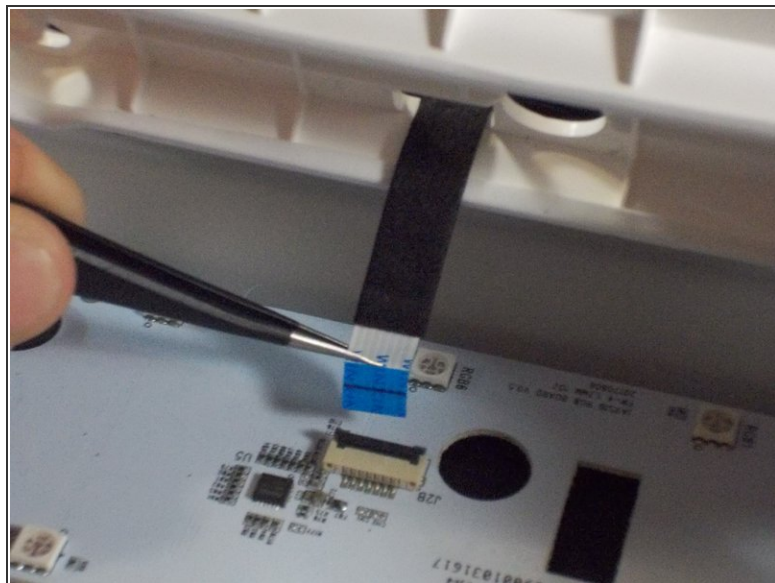
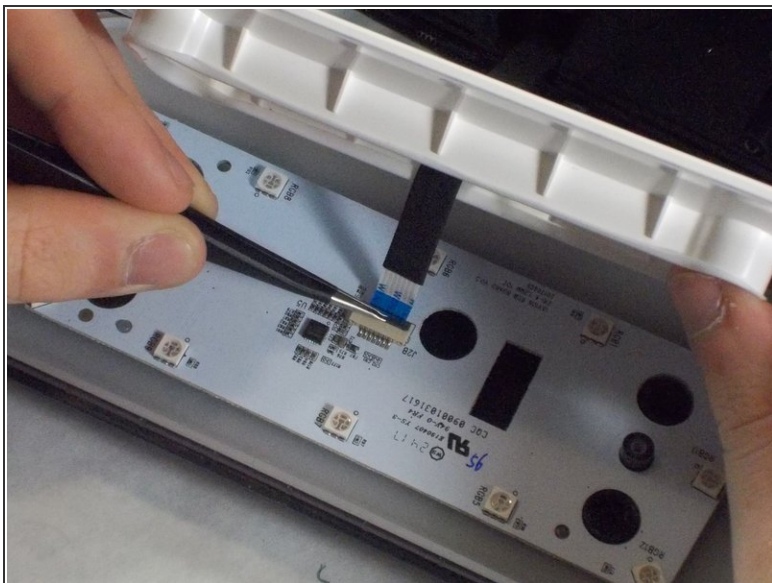
- Remove the four 1.7 mm Phillips #0 screws located on the bottom of the device.
 - Lift up the bottom of the device.
- ⚠ Carefully lift the bottom of the device up as to not damage the ribbon cable connecting it.

Step 2



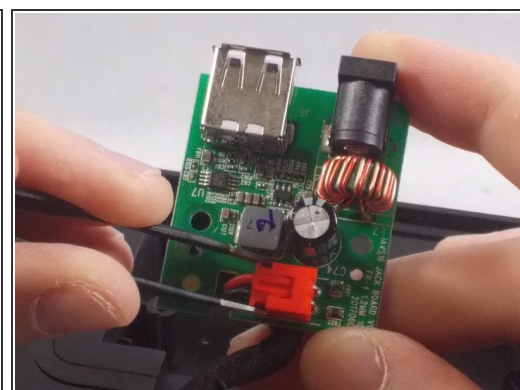
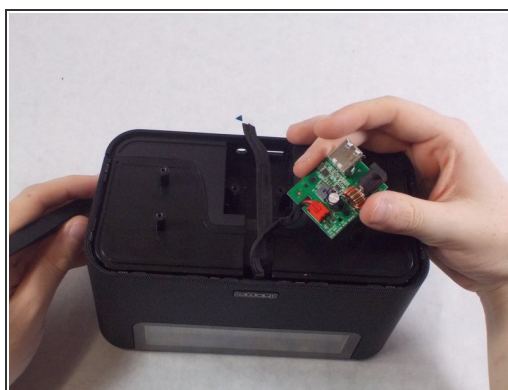
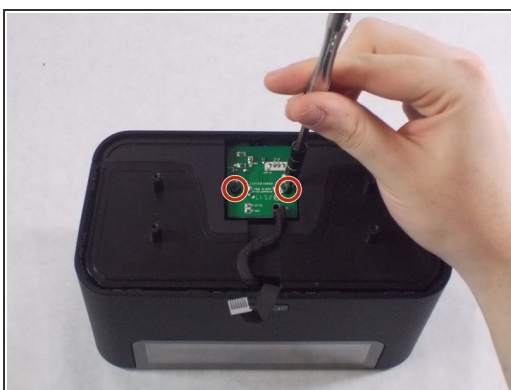
- Remove the two 1.7 mm Phillips #0 screws holding the white face plate onto the inside of the device's bottom.
 - Using an iFixit opening tool on the side without the black adhesive, carefully lift up the white face plate.
- ⚠ Lifting too quickly could damage the ribbon cable still attached.

Step 3



- Using the tweezers, lift up on the black tab holding the ribbon cable down.
- Carefully pull the ribbon cable back and out of the slot.

Step 4



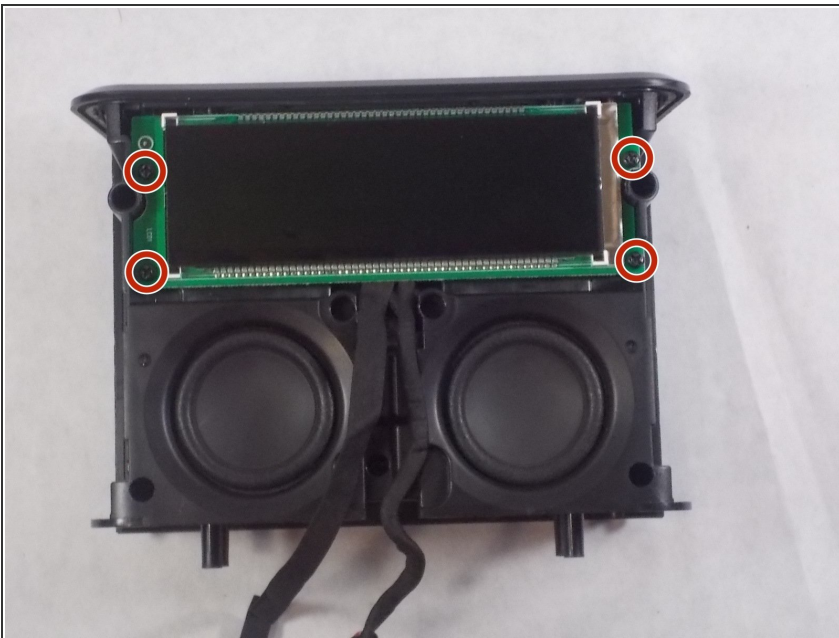
- Remove the two 1.7 mm Phillips #0 screws holding the power board in.
- Carefully flip the board over.
- Remove the red connector from its socket with a pair of tweezers.

Step 5 — LCD (Display)



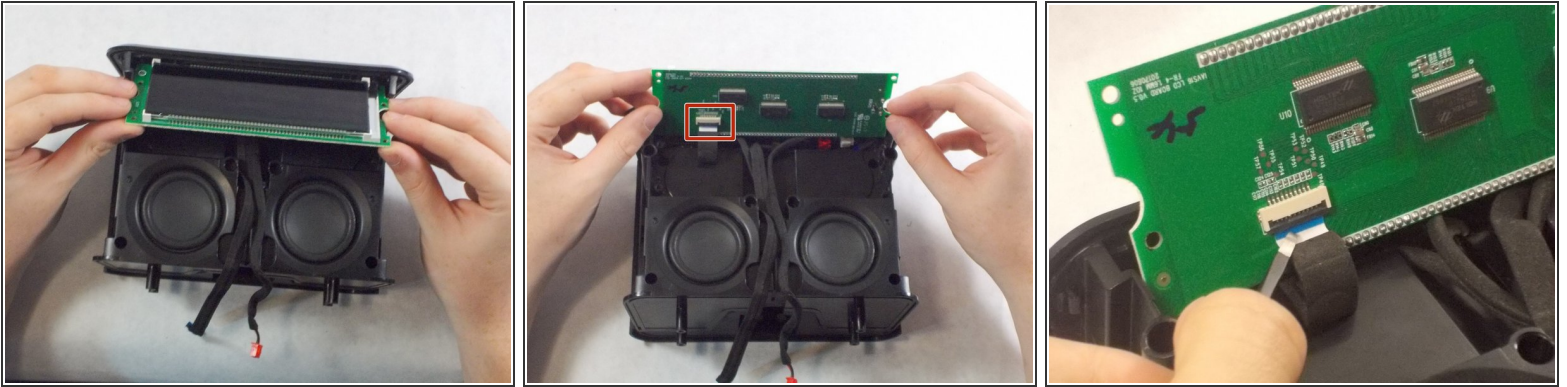
- Insert an iFixit opening tool into the lining on the front casing and pry it apart. Do this for both sides.
- Further remove the front casing off from the device manually with your hands.

Step 6



- Remove the four 1.7 mm Phillips #0 screws holding the LCD onto the front of the device.

Step 7



- Carefully flip the LCD display over to expose the ribbon cable connecting it.
- Lift the black tab holding the cable down, and carefully put it out of the socket.

To reassemble your device, follow these instructions in reverse order.