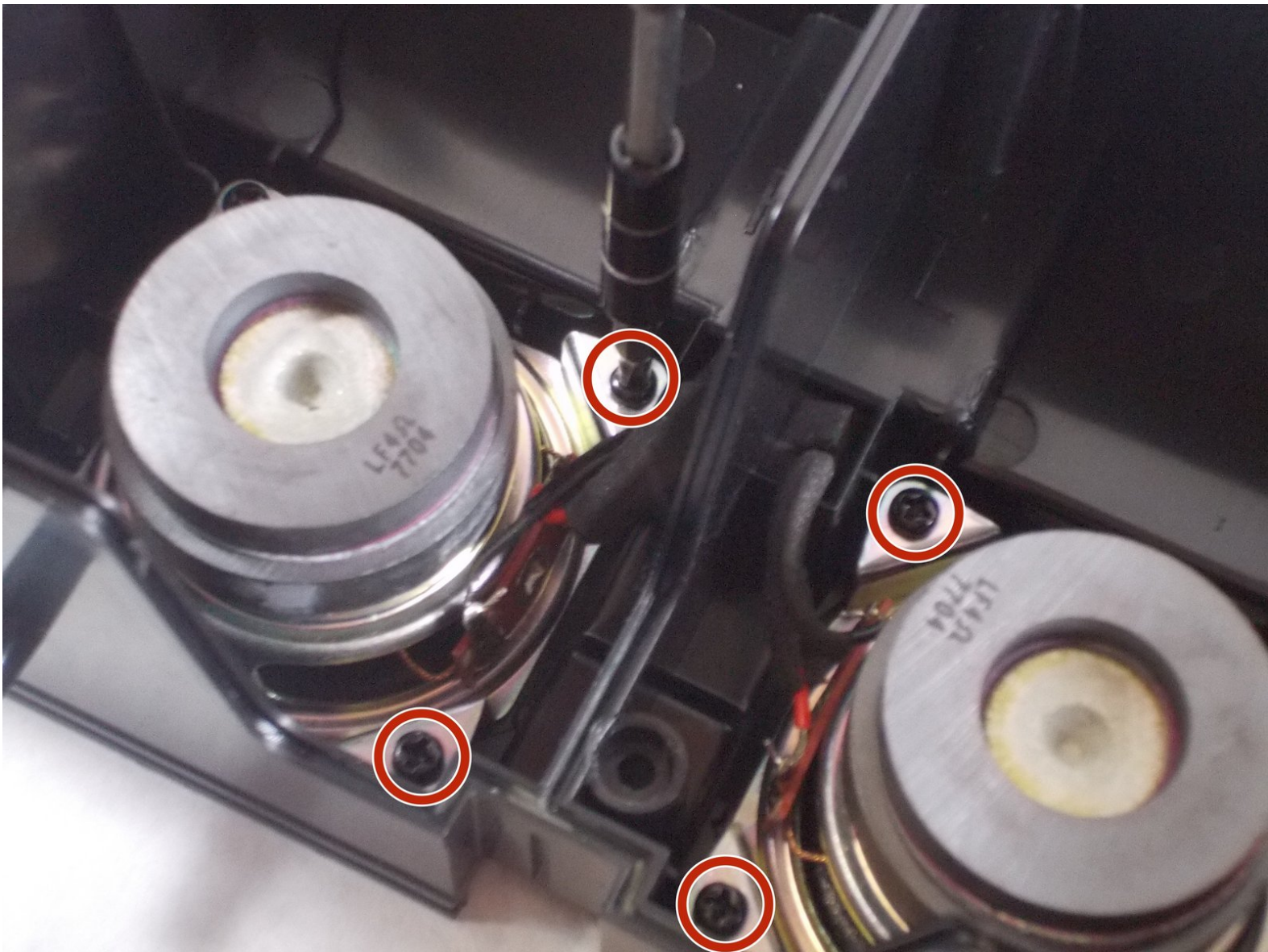




iHome iAVS16 Speakers Replacement

How to remove the speakers of the iHome AVS16.

Written By: Ashley Famularo



INTRODUCTION

This guide will show you how to disassemble and remove the speakers in the iHome iAVS16.

After removing the four screws holding the speakers in, they will be able to be pushed out from the device.



TOOLS:

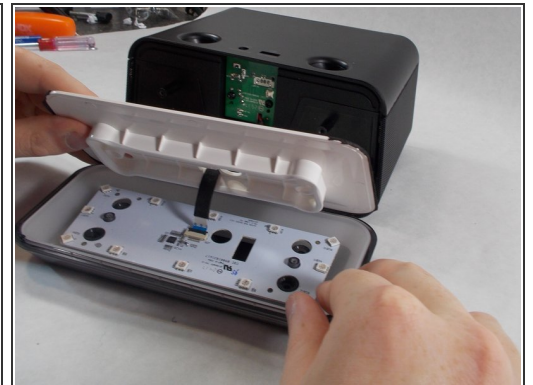
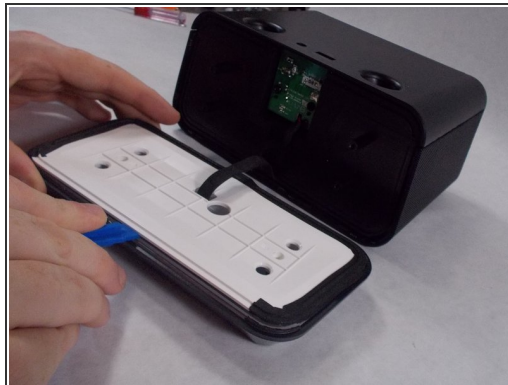
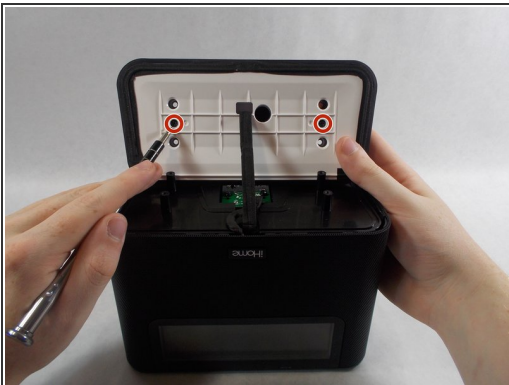
- [iFixit Opening Tools](#) (1)
 - [Phillips #0 Screwdriver](#) (1)
 - [Tweezers](#) (1)
-

Step 1 — Power Board



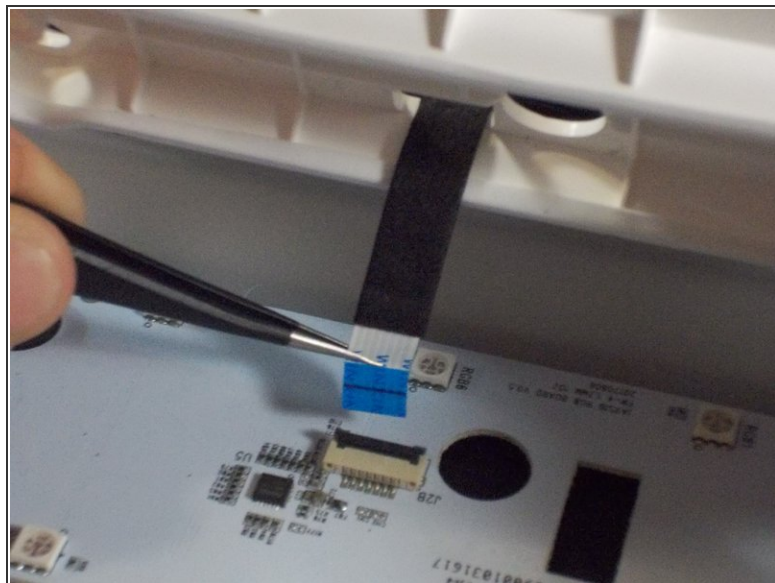
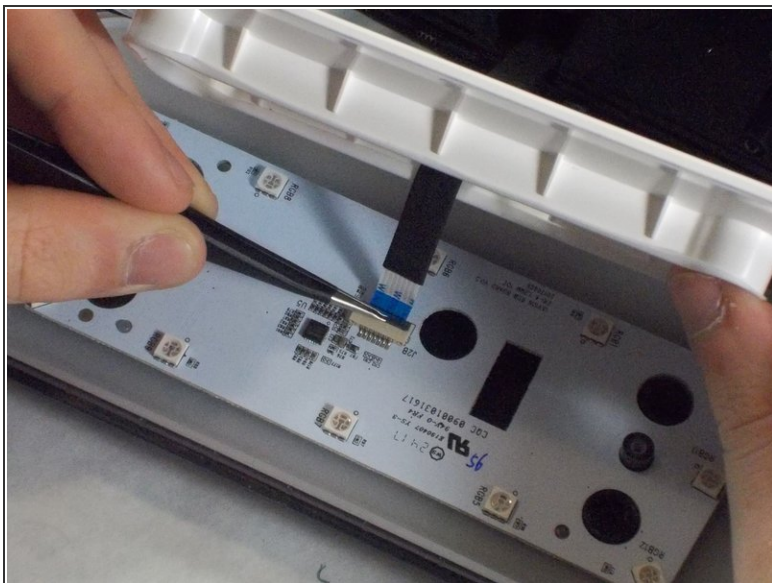
- Remove the four 1.7 mm Phillips #0 screws located on the bottom of the device.
 - Lift up the bottom of the device.
- ⚠ Carefully lift the bottom of the device up as to not damage the ribbon cable connecting it.

Step 2



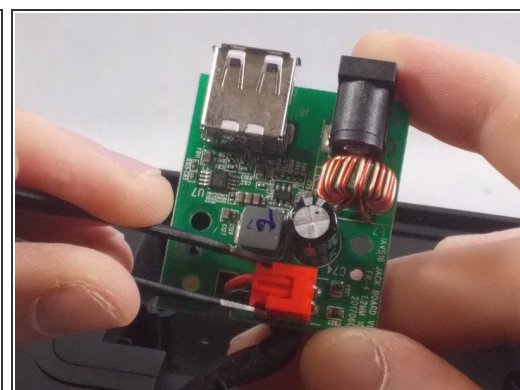
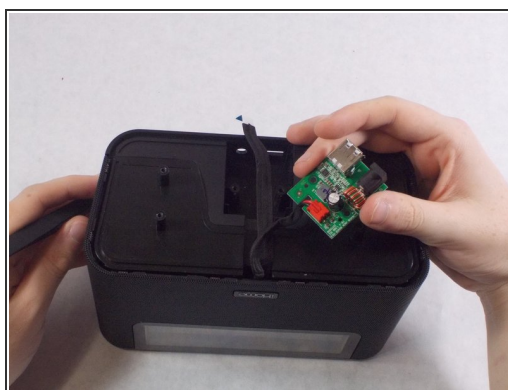
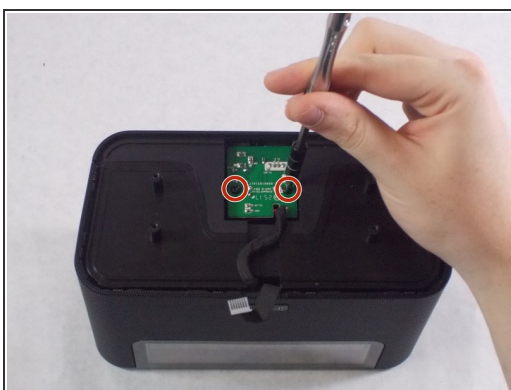
- Remove the two 1.7 mm Phillips #0 screws holding the white face plate onto the inside of the device's bottom.
 - Using an iFixit opening tool on the side without the black adhesive, carefully lift up the white face plate.
- ⚠ Lifting too quickly could damage the ribbon cable still attached.

Step 3



- Using the tweezers, lift up on the black tab holding the ribbon cable down.
- Carefully pull the ribbon cable back and out of the slot.

Step 4



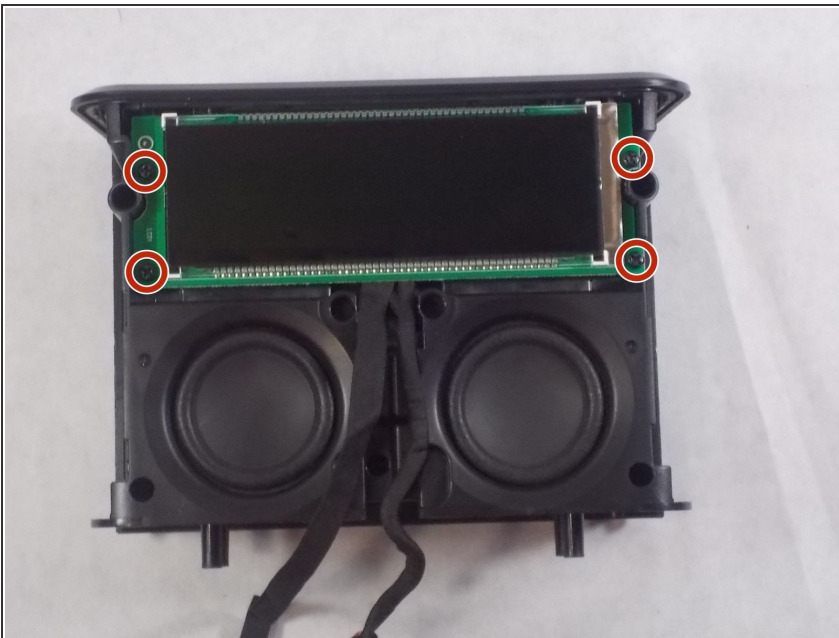
- Remove the two 1.7 mm Phillips #0 screws holding the power board in.
- Carefully flip the board over.
- Remove the red connector from its socket with a pair of tweezers.

Step 5 — LCD (Display)



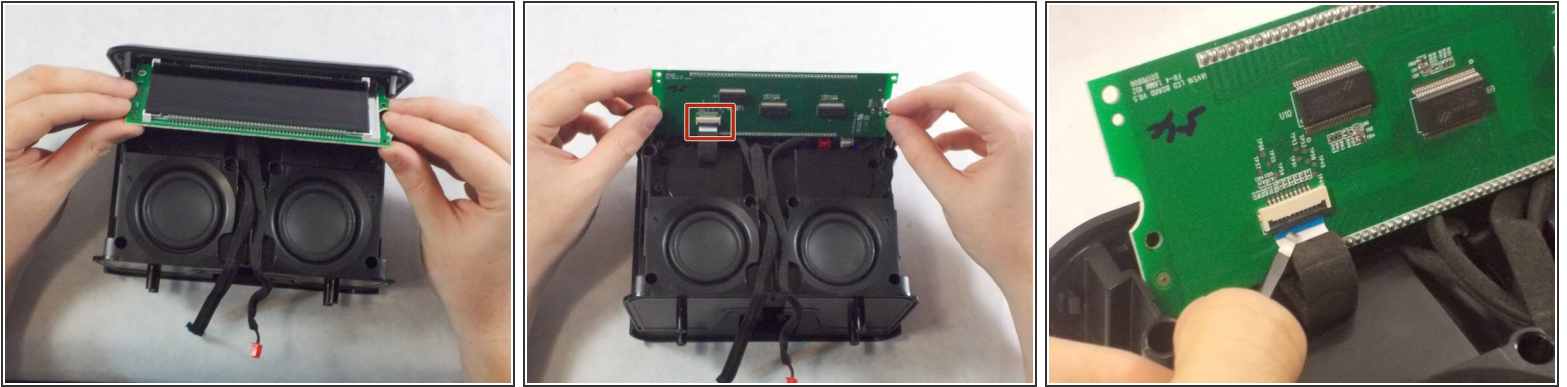
- Insert an iFixit opening tool into the lining on the front casing and pry it apart. Do this for both sides.
- Further remove the front casing off from the device manually with your hands.

Step 6



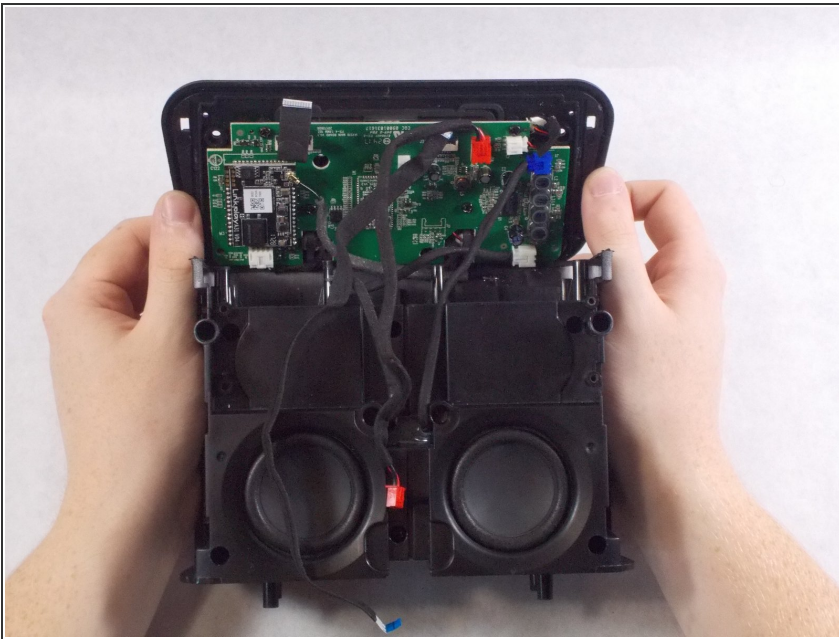
- Remove the four 1.7 mm Phillips #0 screws holding the LCD onto the front of the device.

Step 7



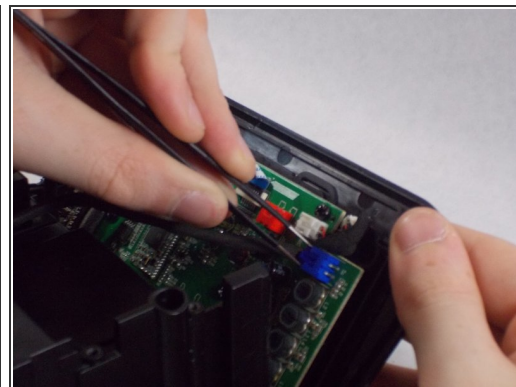
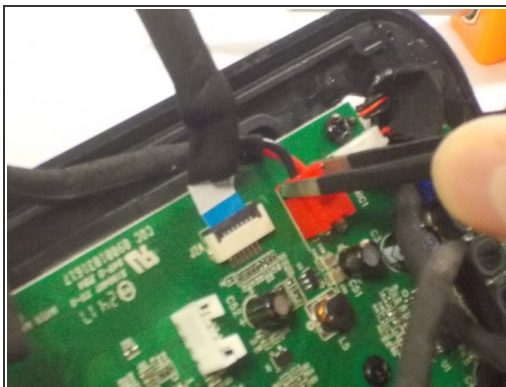
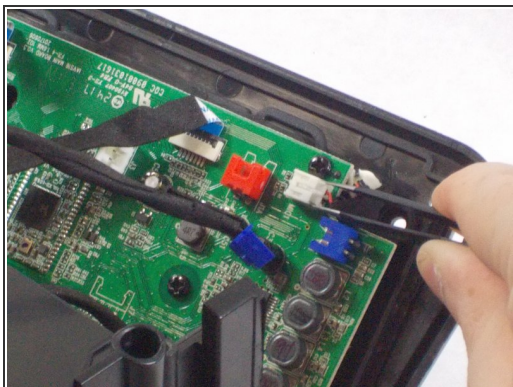
- Carefully flip the LCD display over to expose the ribbon cable connecting it.
- Lift the black tab holding the cable down, and carefully put it out of the socket.

Step 8 — Motherboard



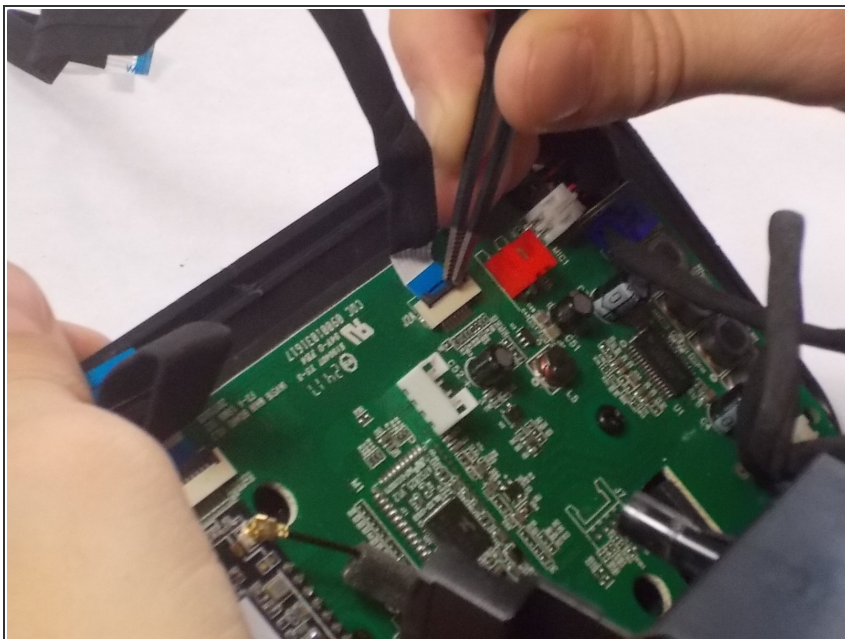
- Flip up the back of the device encasing the motherboard.

Step 9



- Using tweezers, unplug the white, red, and blue connectors from the motherboard by pulling each out.

Step 10



- Carefully unplug the ribbon cable, making sure not to rip it.

Step 11 — Wi-Fi Antenna



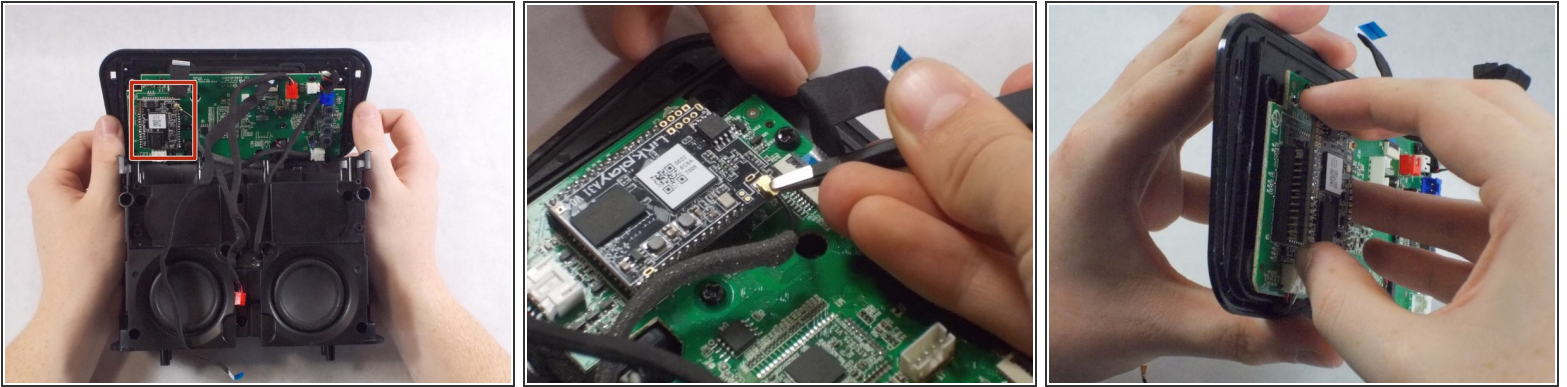
- Using an iFixit opening tool, push the tab under the top of the device to create a gap.
- ⓘ Sometimes the top will pop off easily, and other times it will not. You may need to hold the tab up while you insert the iFixit opening tool under the top lining.
- Insert the iFixit opening tool in the gap, and slide it across to remove the top casing.

Step 12



- Remove the top cover of the device.
- Remove the five 1.7 mm Phillips #0 screws on the top of the device.

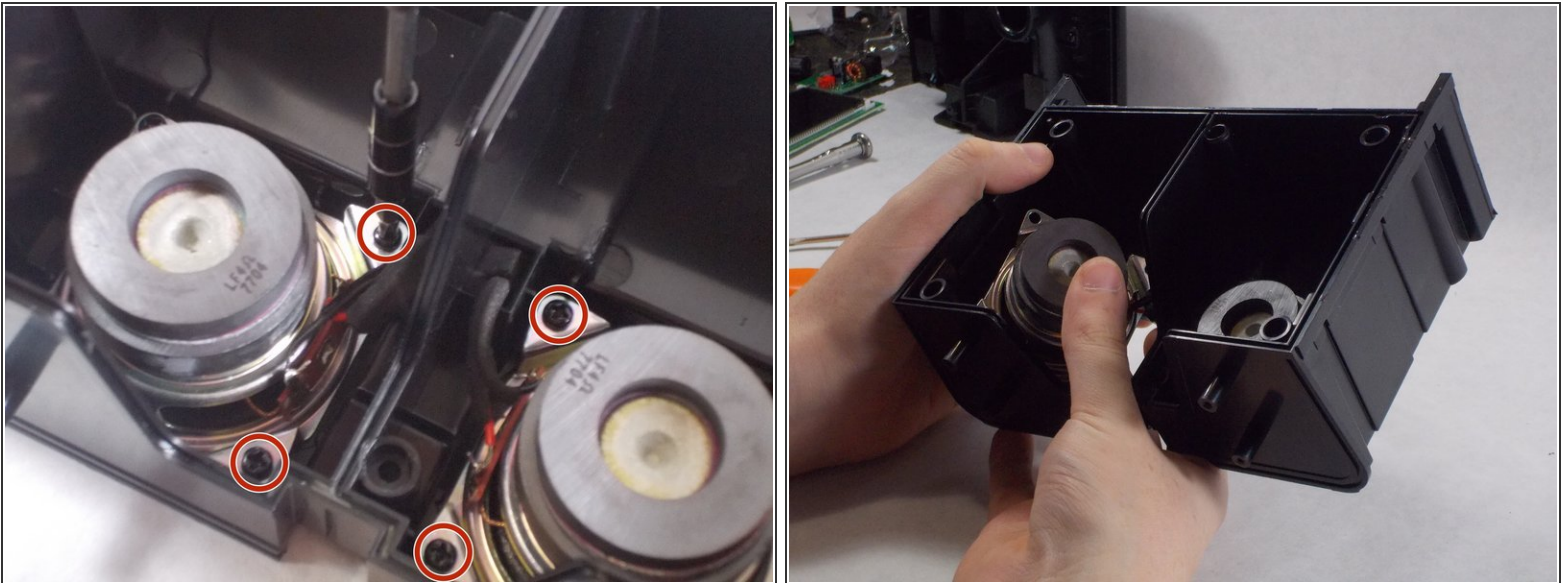
Step 13



- Remove the Wi-Fi antenna with tweezers.

i You may wish to completely remove the motherboard for easier access to the Wi-Fi chip and antenna. Please refer to [motherboard guide](#) for instructions.

Step 14 — Speakers



- Remove the four Phillips screws on the back of the front half of the device holding the speakers in.

! The speakers are magnetic so removing the screws can be challenging.

- Push the speakers out of the back of the device.

To reassemble your device, follow these instructions in reverse order.