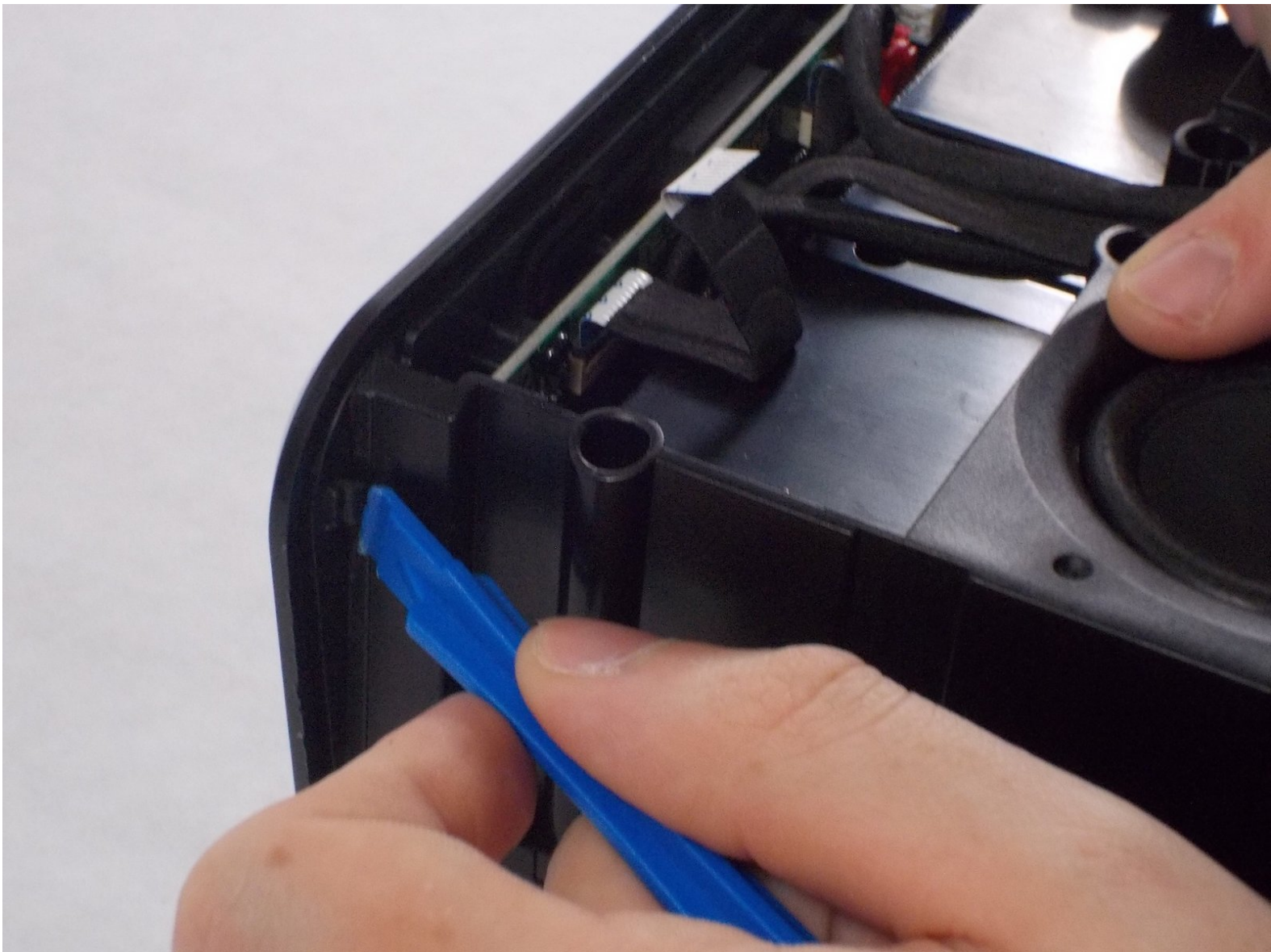




iHome iAVS16 Wi-Fi Antenna Replacement

How to disassemble the device to access, and replace, the Wi-Fi antenna for the iHome iAVS16.

Written By: Marco Sousa



INTRODUCTION

This guide will show you how to disassemble the iHome iAVS16 to access, and replace, the Wi-Fi antenna. You may wish to remove the motherboard for easier access to the Wi-Fi chip.

TOOLS:

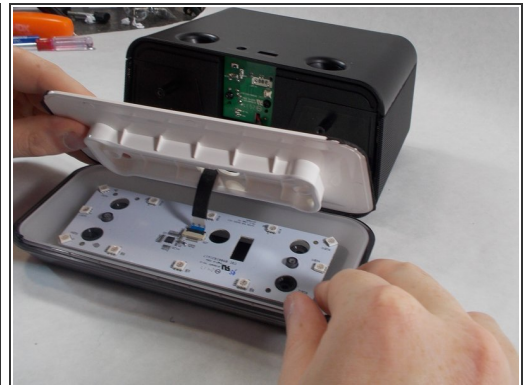
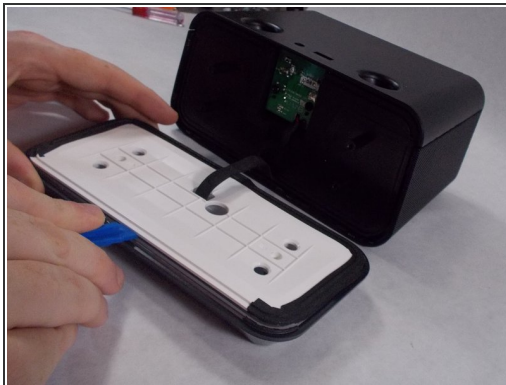
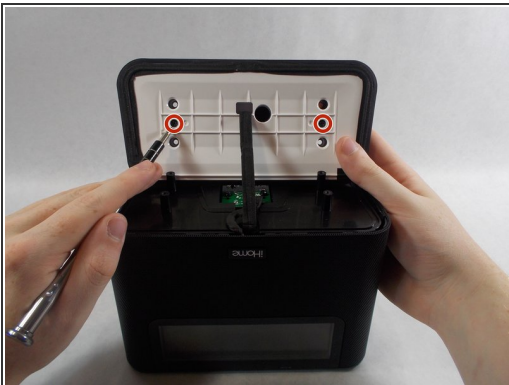
- [iFixit Opening Tools](#) (1)
 - [Phillips #0 Screwdriver](#) (1)
 - [Tweezers](#) (1)
-

Step 1 — Power Board



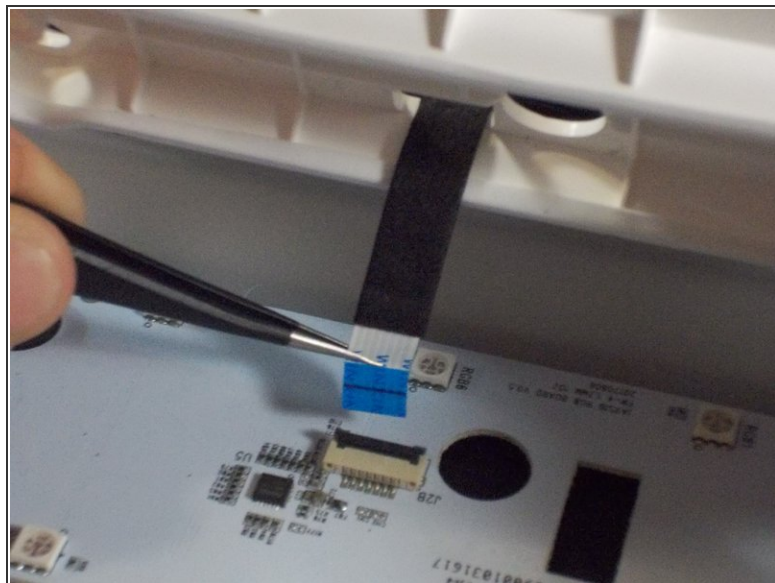
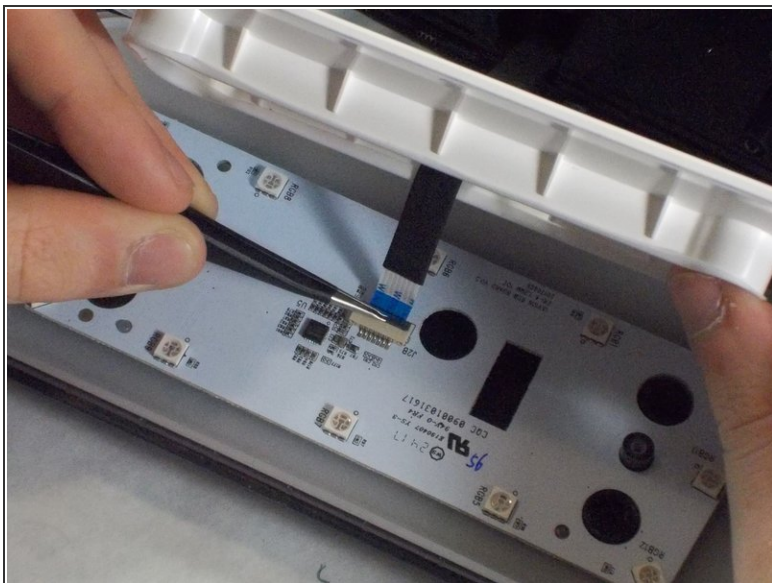
- Remove the four 1.7 mm Phillips #0 screws located on the bottom of the device.
 - Lift up the bottom of the device.
- ⚠ Carefully lift the bottom of the device up as to not damage the ribbon cable connecting it.

Step 2



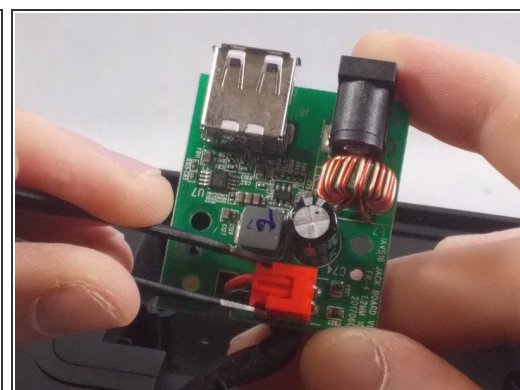
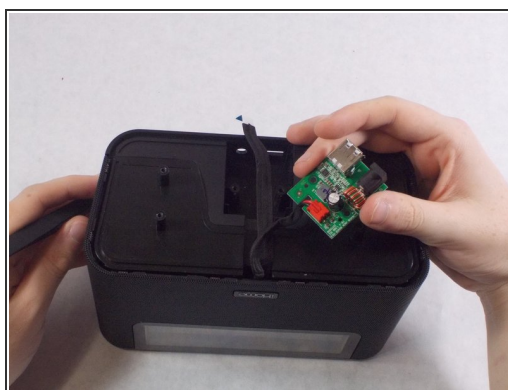
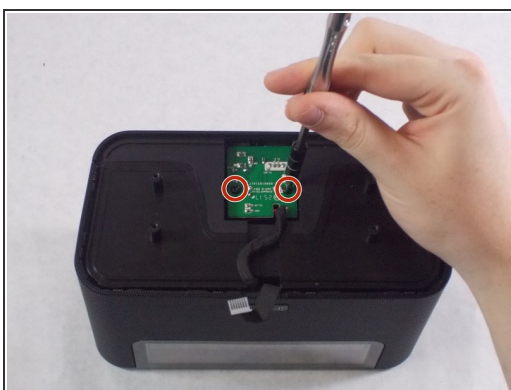
- Remove the two 1.7 mm Phillips #0 screws holding the white face plate onto the inside of the device's bottom.
 - Using an iFixit opening tool on the side without the black adhesive, carefully lift up the white face plate.
- ⚠ Lifting too quickly could damage the ribbon cable still attached.

Step 3



- Using the tweezers, lift up on the black tab holding the ribbon cable down.
- Carefully pull the ribbon cable back and out of the slot.

Step 4



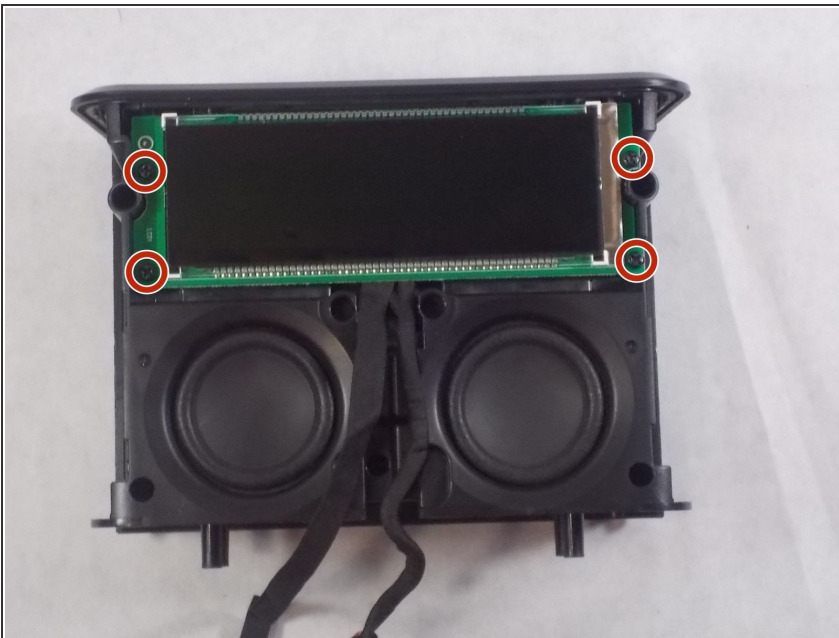
- Remove the two 1.7 mm Phillips #0 screws holding the power board in.
- Carefully flip the board over.
- Remove the red connector from its socket with a pair of tweezers.

Step 5 — LCD (Display)



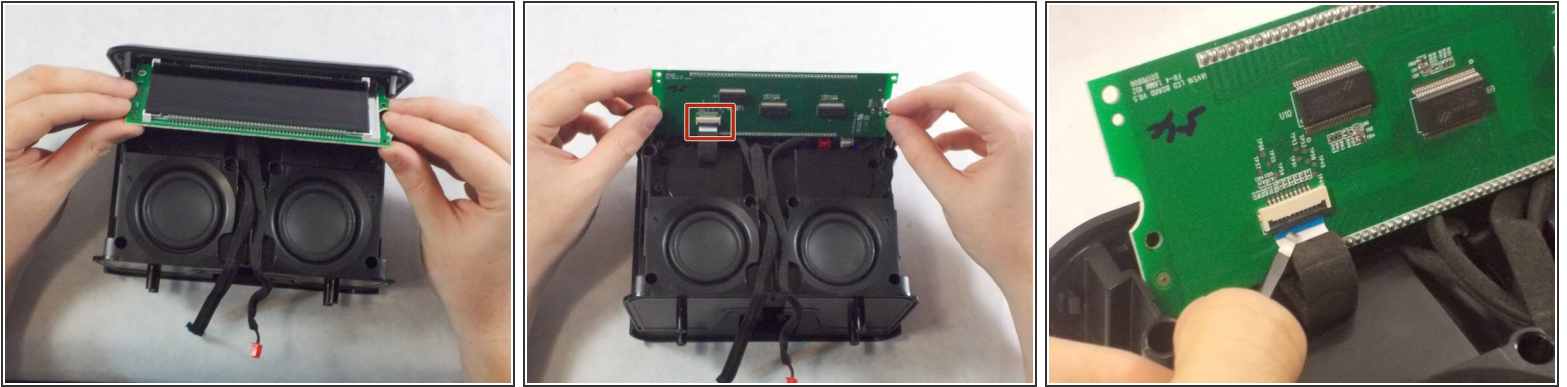
- Insert an iFixit opening tool into the lining on the front casing and pry it apart. Do this for both sides.
- Further remove the front casing off from the device manually with your hands.

Step 6



- Remove the four 1.7 mm Phillips #0 screws holding the LCD onto the front of the device.

Step 7



- Carefully flip the LCD display over to expose the ribbon cable connecting it.
- Lift the black tab holding the cable down, and carefully put it out of the socket.

Step 8 — Wi-Fi Antenna



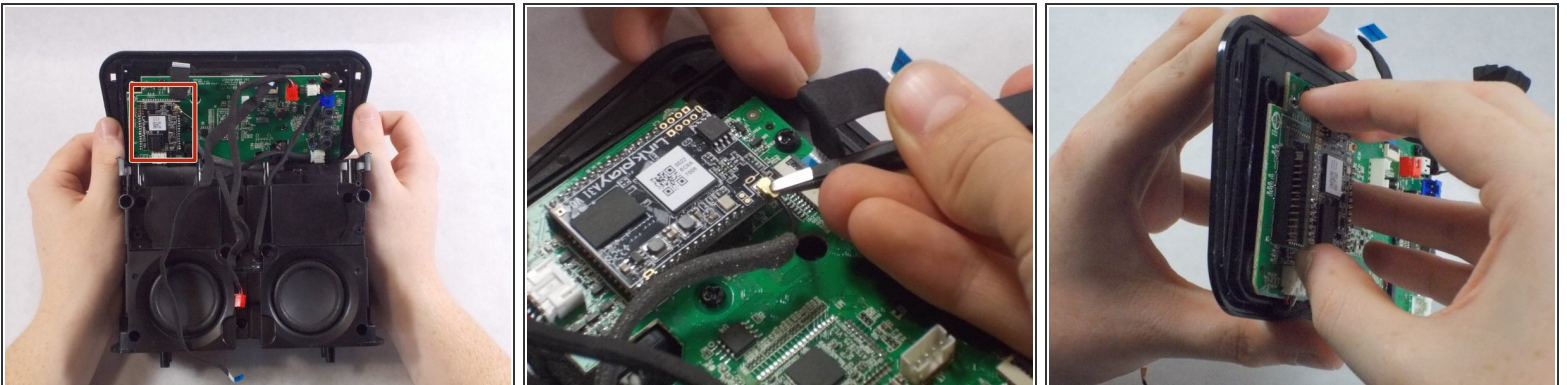
- Using an iFixit opening tool, push the tab under the top of the device to create a gap.
- ⓘ Sometimes the top will pop off easily, and other times it will not. You may need to hold the tab up while you insert the iFixit opening tool under the top lining.
- Insert the iFixit opening tool in the gap, and slide it across to remove the top casing.

Step 9



- Remove the top cover of the device.
- Remove the five 1.7 mm Phillips #0 screws on the top of the device.

Step 10



- Remove the Wi-Fi antenna with tweezers.
- ⓘ You may wish to completely remove the motherboard for easier access to the Wi-Fi chip and antenna. Please refer to [motherboard guide](#) for instructions.

To reassemble your device, follow these instructions in reverse order.