



iHome iBN97 Display Screen Replacement

If you are having an issue with the display on this iHome model, it's possible to take it apart without breaking any other component. Just follow the steps!

Written By: Luke Williams



INTRODUCTION

This guide will show the proper disassembly of this iHome model so that the time display screen may be replaced. If other components need replacement (speakers, backup battery, etc.) this guide will still show how to get to those components.



TOOLS:

- [Phillips #2 Screwdriver](#) (1)
Needs to have some neck to it.
- [Phillips #1 Screwdriver](#) (1)
- [Spudger](#) (1)
- [Tweezers](#) (1)



PARTS:

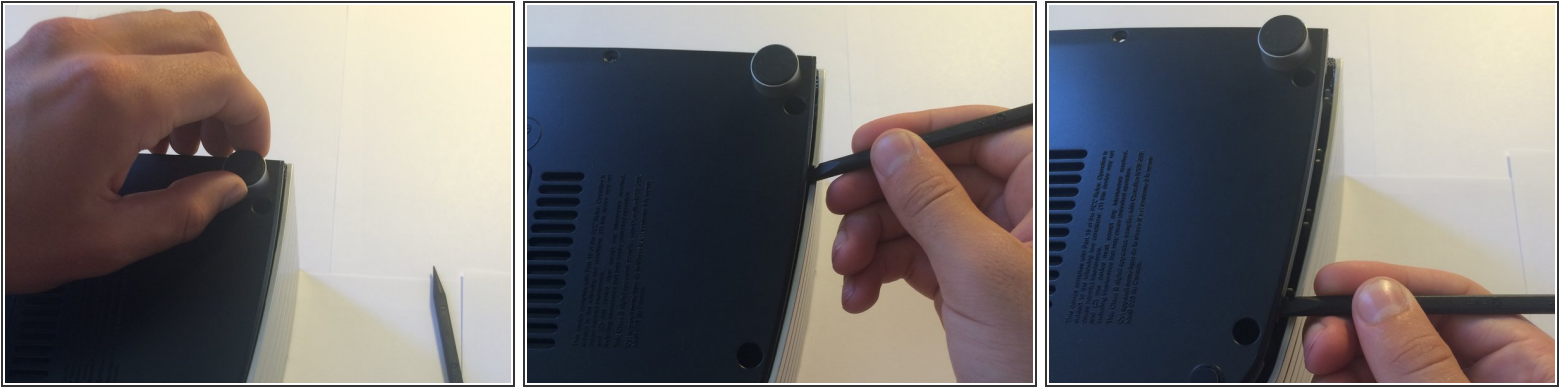
- [iHome Display Screen](#) (1)
iHome support has components to every model of iHome. Visit their website and contact them for support.

Step 1 — Bottom Plate Screws



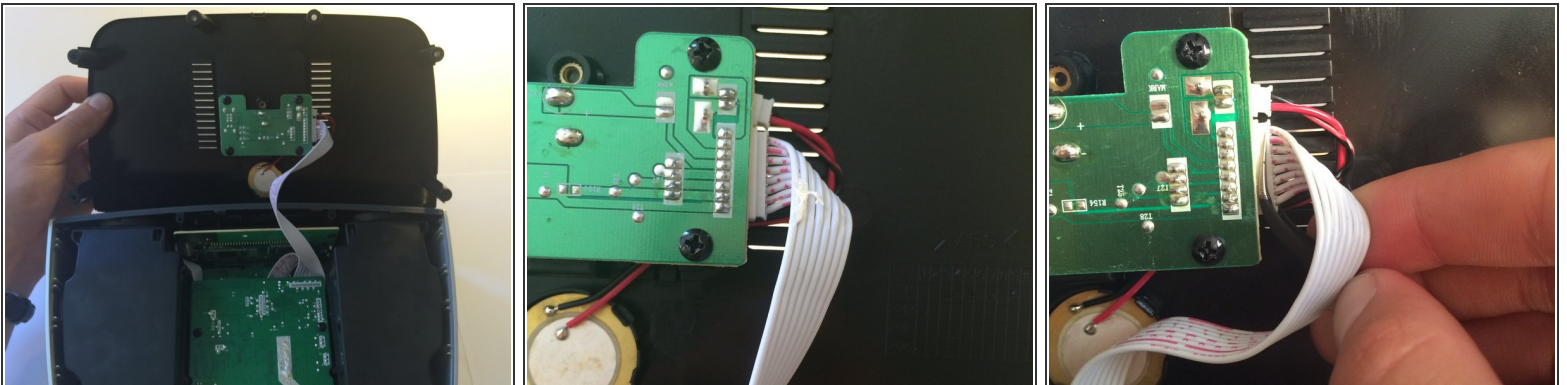
- ✚ This disassembly involves the removal of many components and screws. Be sure to remember which screws go where, and not to lose any parts.
- i All the screws are size 2 except for the ones in Step 9.
 - Flip the iHome upside down.
 - You should see six pocketed Phillip's head screws.
 - You should also see 2 visible Phillip head screws.
 - Using a long neck Phillips head screwdriver, remove the screws.
- i The long neck screwdriver is only necessary for this step. If it works well in the following steps, that is fine; just be sure to use the right tool for the right job.

Step 2 — Bottom Plate Removal



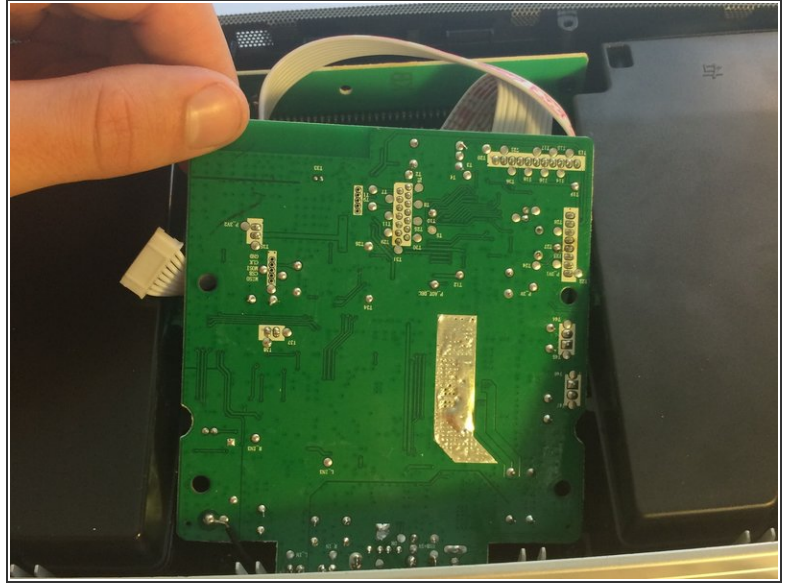
- Slightly lift the front end with the support.
- Insert the flat end of the spudger and slide it along the edge.
- The case should pop out easily. Remove the piece by lifting it straight out.

Step 3 — Backup Battery Disconnection



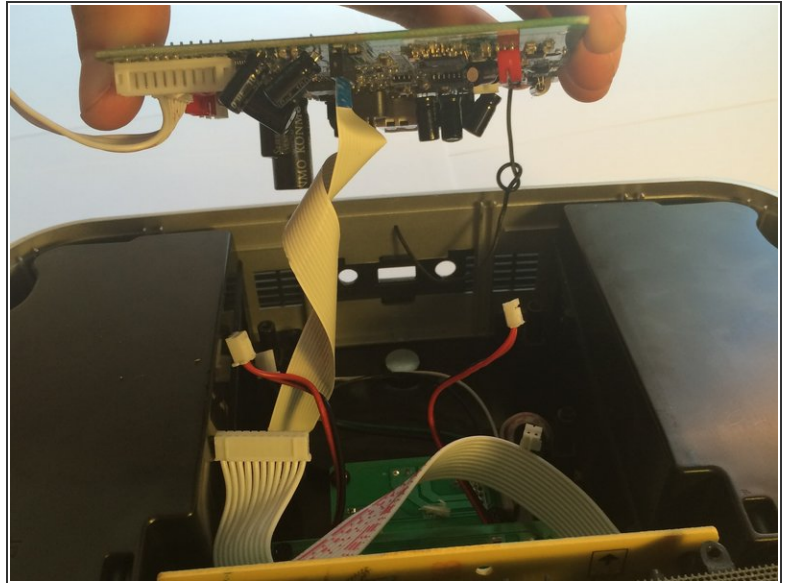
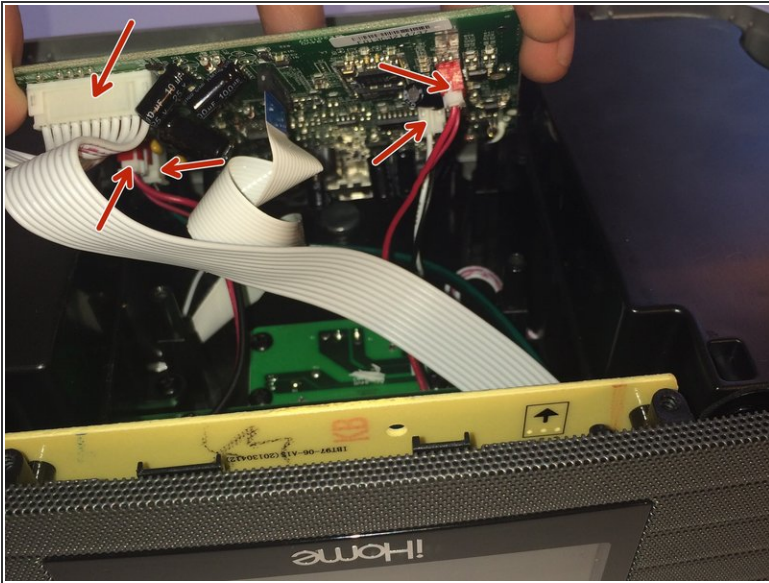
- Using a pair of tweezers, remove the ribbon cable connector at the backup battery.
 - ⚠ Be sure not to tug on the cables themselves. This could result in damaging the cables.
- ⓘ If tweezers are too difficult to use, it is ok to use your fingers, just so long as you don't put a lot of tension on the cables.

Step 4 — Logic Board Removal



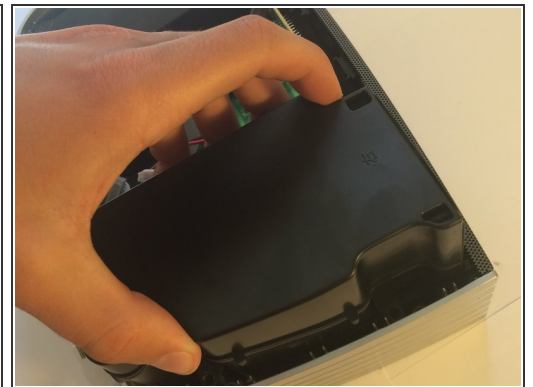
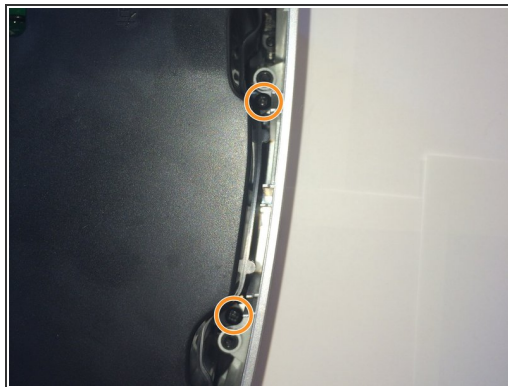
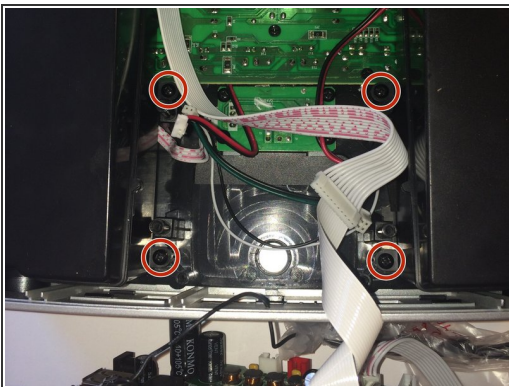
- Remove the 4 screws located on the logic board.
 - Gently lift the front side of the board towards you
- ⚠ Careful not to pull it out forcefully, there are still many cables attached to the logic board.

Step 5 — Logic Board Connections Removal



- Remove the 4 two-wire extension cables and the ribbon cable connected to the unit.
- ⓘ The logic board will still be attached to the unit by a flat ribbon cable and a radio wire.
- Set the logic board next to the unit.

Step 6 — Speaker Removal



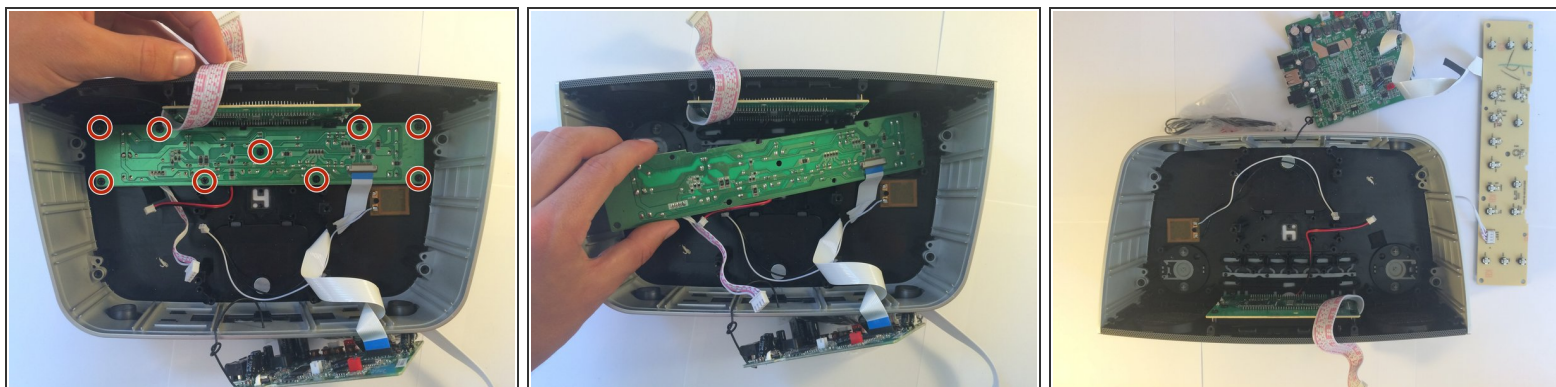
- Remove the 4 Phillips head screws that attach the speakers to the unit.
- There are 2 more screws for **each** speaker. The speakers are symmetrical. Remove the 4 screws to free both speakers.
- Gently lift each speaker out of the unit and set aside.

Step 7 — Bluetooth Removal



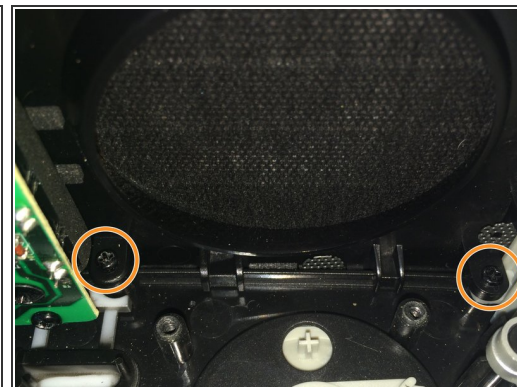
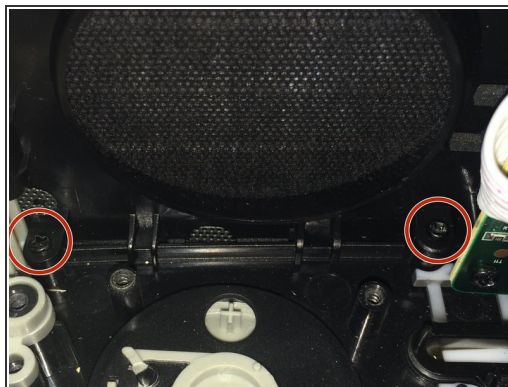
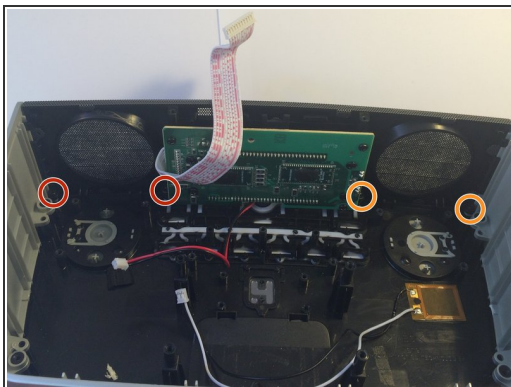
- Remove the 4 Phillips head screws belonging to the small bluetooth circuit board.
- Using tweezers, remove the ribbon cable connection.
- Set the bluetooth circuit board aside.

Step 8 — Switch Board Removal



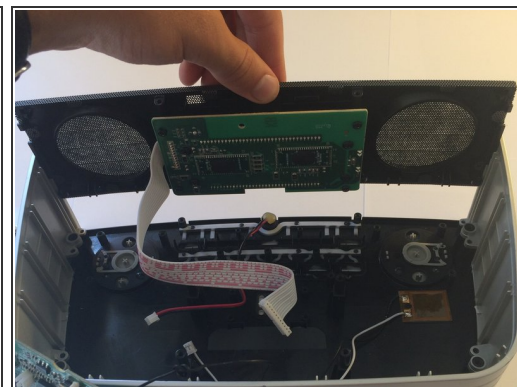
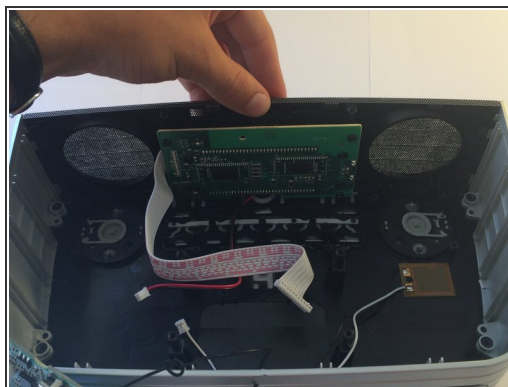
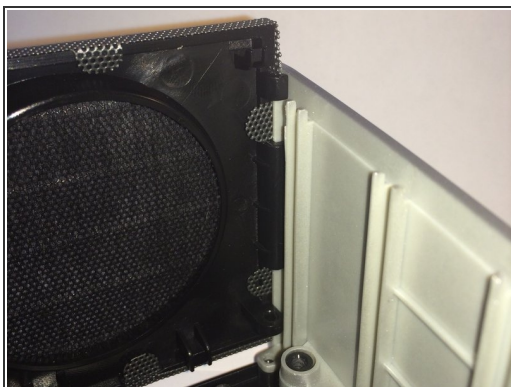
- Remove the 9 Phillips screws that fasten the switch board to the unit.
 - Remove the switch board and place it outside of the unit, out of the way.
- i** The switch board is attached by a flat ribbon cable to the logic board, which is tethered to the unit by a radio wire. It shouldn't get in the way, however.

Step 9 — Dismantling the Case



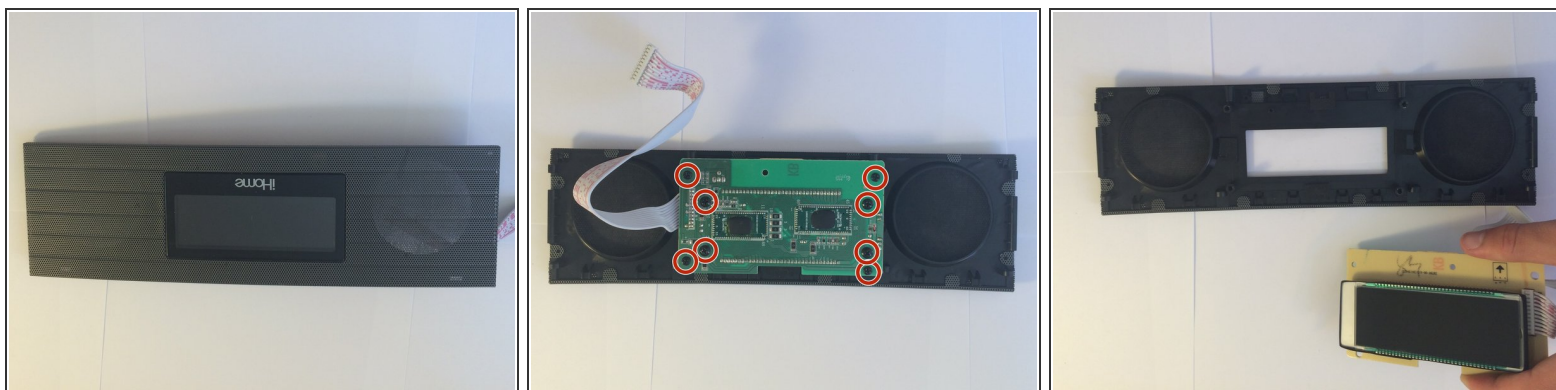
- i** If your screwdriver is small enough to fit inside the width of the case, this step is not necessary. Skip ahead to Step 11 and perform the step inside the case.
- Using the size 1 Phillips screwdriver, remove the 4 Phillips head screws that hold the different parts of the case together.

Step 10 — Screen Removal



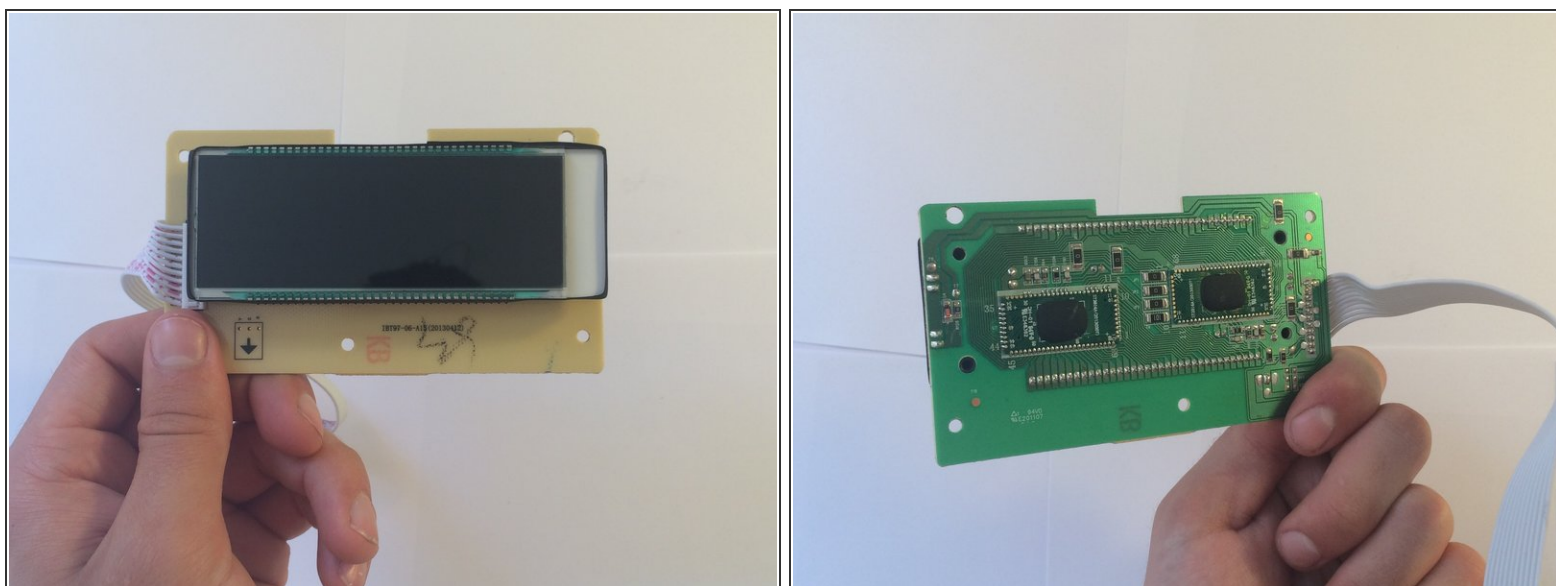
- Slide the screen up and out of the unit.
- i** This part is attached in a tongue and groove fashion. It should come out without any snapping.

Step 11 — Time Screen Display Removal



- Remove the 8 Phillips screws and remove the time display screen.
- ★ These screws are size 2 again.

Step 12 — Finished!



- Now this component is either repaired or replaced.

Follow these steps backwards to reassemble the device. The reassembly is straightforward; it should all fit well again.