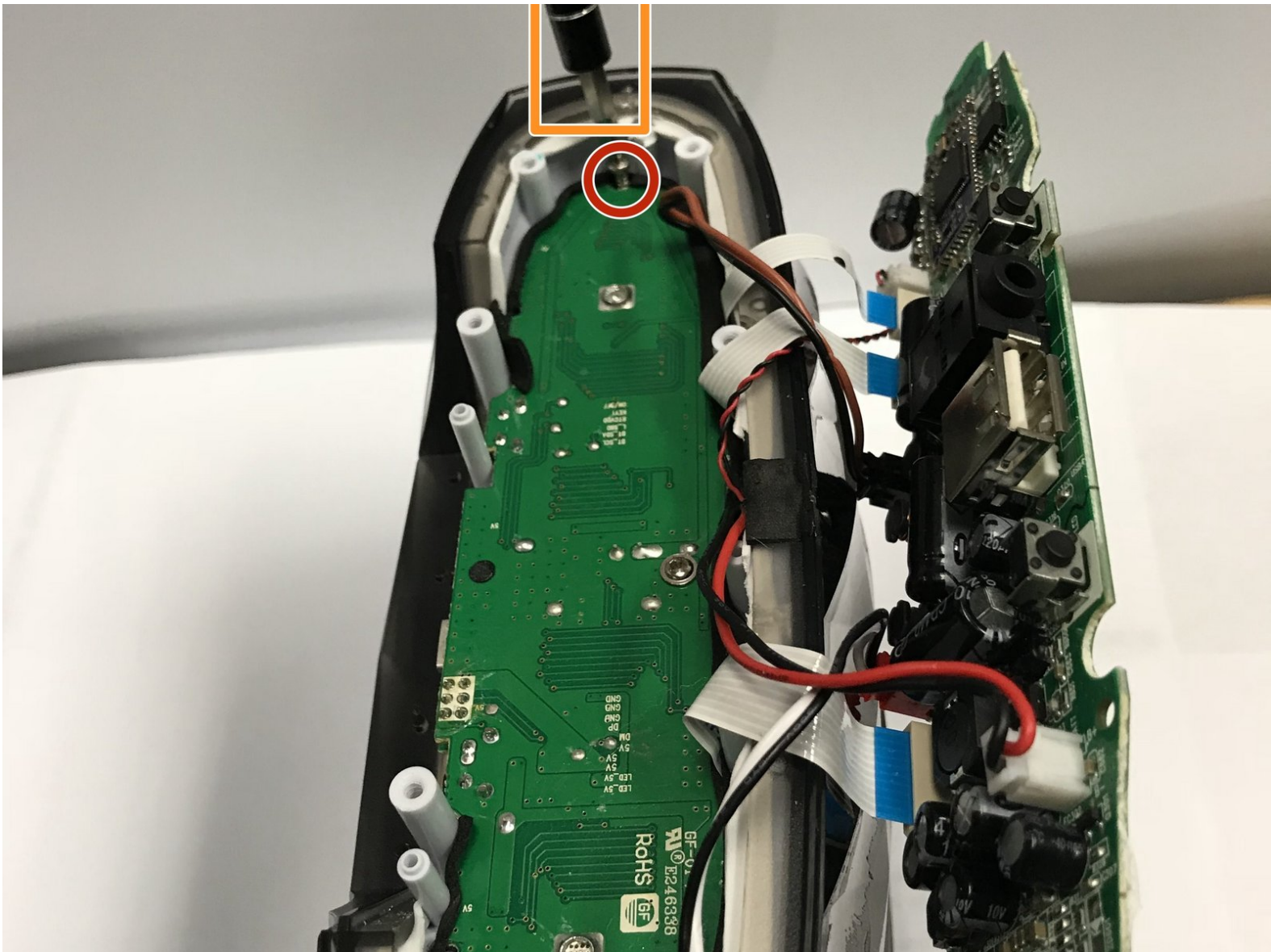




iHome iBT84 Light Fixture Replacement

Replace your broken light fixtures to enjoy the lights while your music is playing on your iHome.

Written By: Joshua Lopez



INTRODUCTION

This guide will help the user replace the individual light fixtures inside this device. You will need a screwdriver and a metal spudger.

TOOLS:

- [Phillips #0 Screwdriver](#) (1)
 - [iFixit Opening Tools](#) (1)
 - [Metal Spudger](#) (1)
-

Step 1 — Motherboard



- On the opposite side of the speaker should be a sticker, remove it with your fingers or the flat plastic iFixit tool.
- Use a Philip's screwdriver to take the screws out of the cover.

Step 2



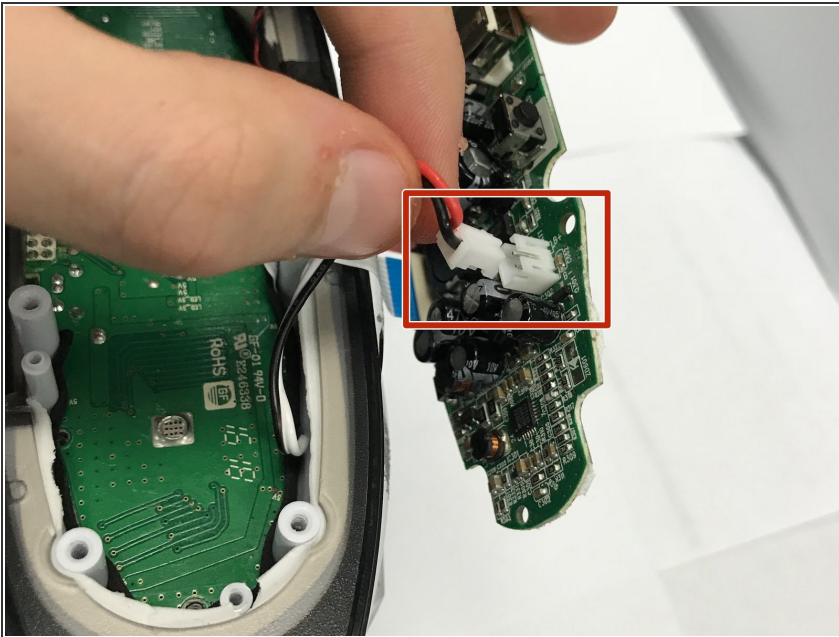
- Once the screws are all out, the cover should come off revealing the motherboard.

Step 3



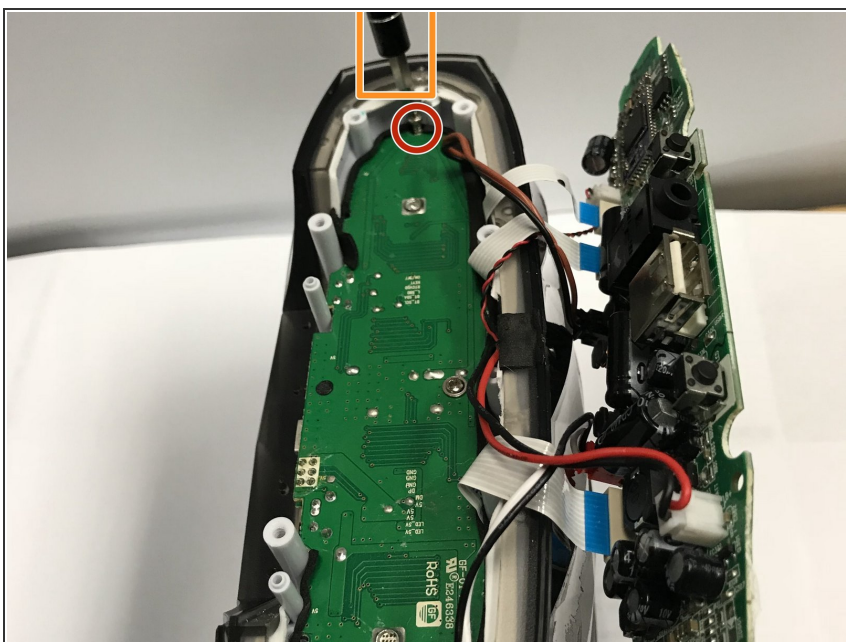
- You will notice that the triangular black volume piece is loose, make sure to take that off revealing the buttons.
- Once that is done, the motherboard can be taken out. **May require** some wiggling.
- Make sure none of the wires are damaged and that they are all connected.

Step 4



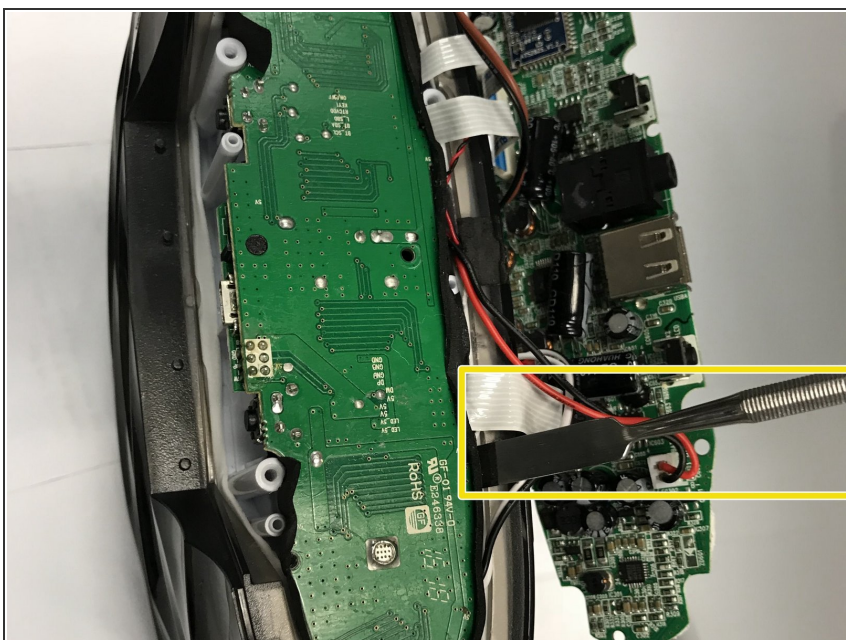
- The connections shown here can be taken off by pulling on the white plastic connector piece.
- The same can be said about the white, paper like, connectors. Pull on them **gently**.
- Once all connections are apart, the motherboard is safe to be replaced.

Step 5 — Light Fixture



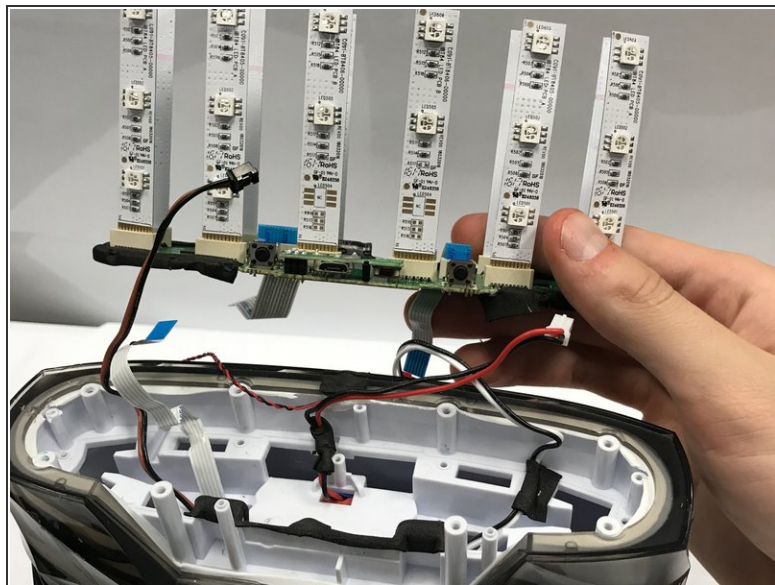
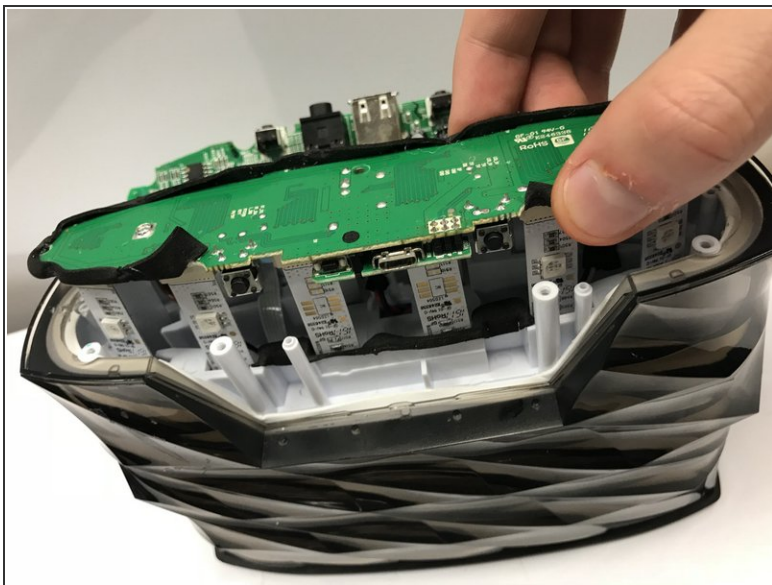
- Use the screwdriver to unscrew the screws on the left and right sides.

Step 6



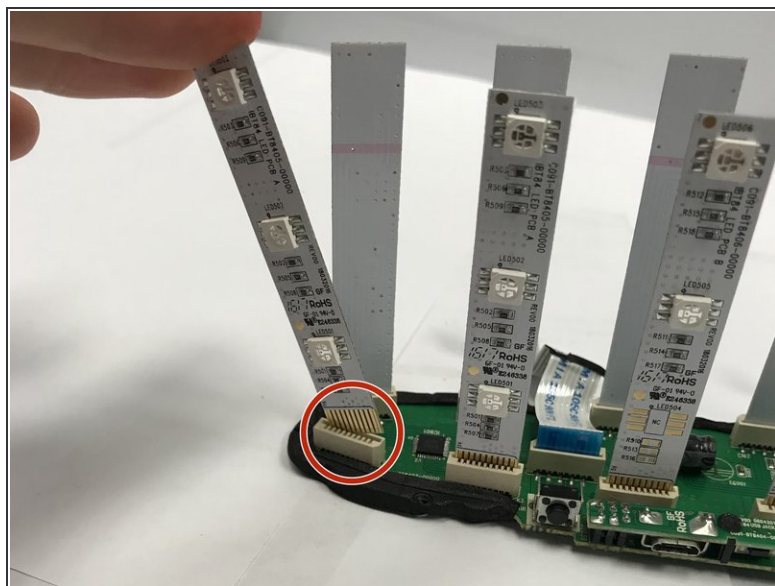
- Once unscrewed, use the metal spudger to lift the base of the light fixture.

Step 7



- Lift the base of the light fixture out with the lights.
- **Be careful.** The light fixture's can be easily bent.

Step 8



- Pull gently on the individual light fixture that needs to be replaced.
- Place new individual LED light strip.

To reassemble your device, follow these instructions in reverse order.