



# iHome iD95 Bottom Cover Replacement

This guide will help you take off the bottom cover of the iHome iD95.

Written By: Vincent Chan



---

# INTRODUCTION

Replace the bottom cover to make it look new and shiny.

---



## TOOLS:

- [Phillips #1 Screwdriver](#) (1)
  - [iFixit Opening Tools](#) (1)
  - [Spudger](#) (1)
-

## Step 1 — Backup Battery



- Before taking apart the iD95, disconnect the AC cord from the wall socket and AC adapter from the DC jack. Remove any iPods, iPhones, and iPads attached to the device.
- Flip over the iD95 so the bottom cover is visible and the LCD screen is facing you.

## Step 2



- Remove the 10 mm-length, 5 mm-head screw using a Phillips #1 screwdriver.



### Step 3



- Use a plastic opening tool to take out the backup battery.

### Step 4 — Bottom Cover



- Unscrew five 17 mm-length, 6 mm-head screws using a Phillips #1 screwdriver.

## Step 5




 The bottom cover is attached to the back cover by two plastic clips. Don't use excessive force.

- Insert a plastic opening tool between the edge of the bottom cover and the main body.
- Gently pry the bottom cover from the body. Start anywhere along the front side of the iD95 and work your way around.
- Grip the bottom portion of the device and gently lift the front part of the bottom cover a couple centimeters up.

## Step 6



 Be careful not to use too much force or you might break the plastic rings holding the side panels in place.

- Lift up the bottom cover. Pull the side panel up first, out, and away from the device.
- The side panels have plastic rings that will need to be lifted up and off the cylinders they are placed around.

## Step 7



- Apply the same techniques from the previous step to remove the remaining side panel.



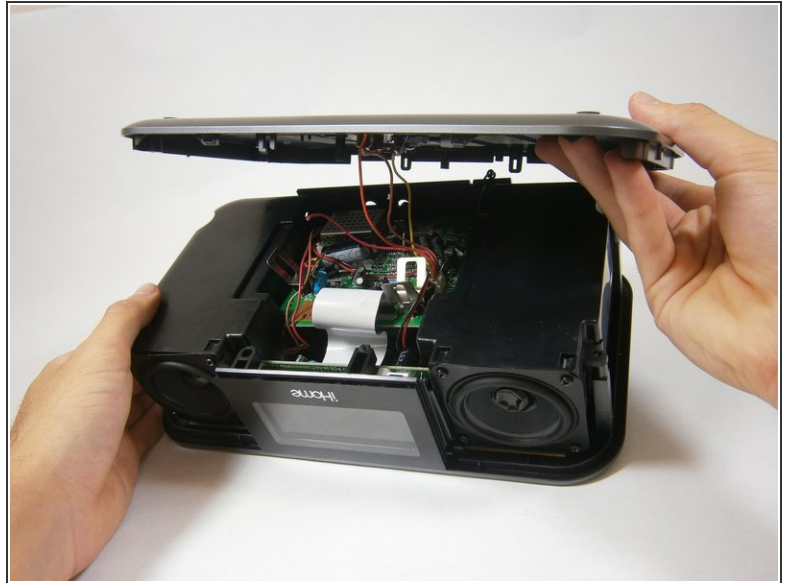
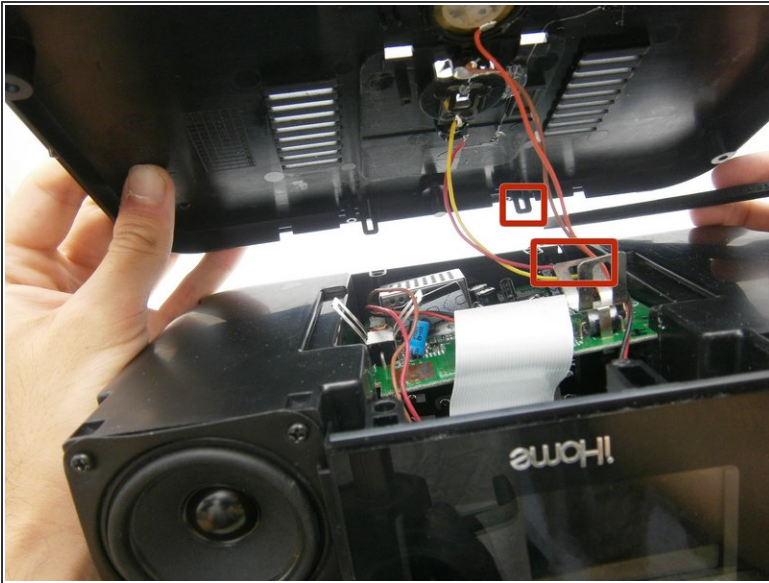
## Step 8



- Locate the two plastic clips holding the bottom and back cover together.
- Which clip you remove first is up to you. Rotate the device 90 degrees either left or right. Insert the flat end of a spudger horizontally between the back speaker and the back cover.
- Place the flat end of the spudger behind one clip and pry it open. This may take repeated attempts.
- ⓘ This is the hardest step because the angle is awkward and the visibility is poor. If possible, have someone hold the device or provide lighting.
- ⓘ Once a clip has been removed, hold the bottom cover open so the clip will not fall back into place. One clip remains to be removed; you are almost there!

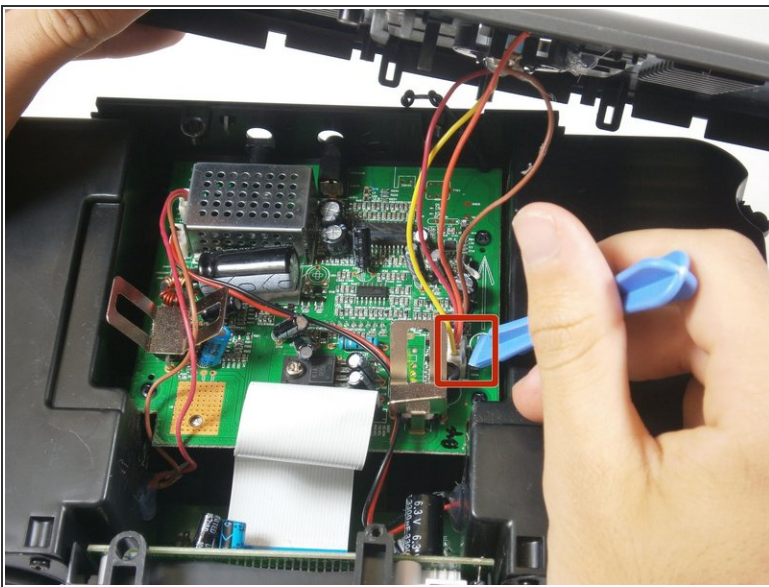


## Step 9



- Use the same steps to remove the remaining clip.
- ⓘ The bottom cover is still connected to the logic board by wiring.

## Step 10



- Use a plastic opening tool to pry off the white zip connector joining the wires to the logic board.
- ⚠ Don't pull the wires. Take your time using a plastic opening tool.

To reassemble your device, follow these instructions in reverse order.