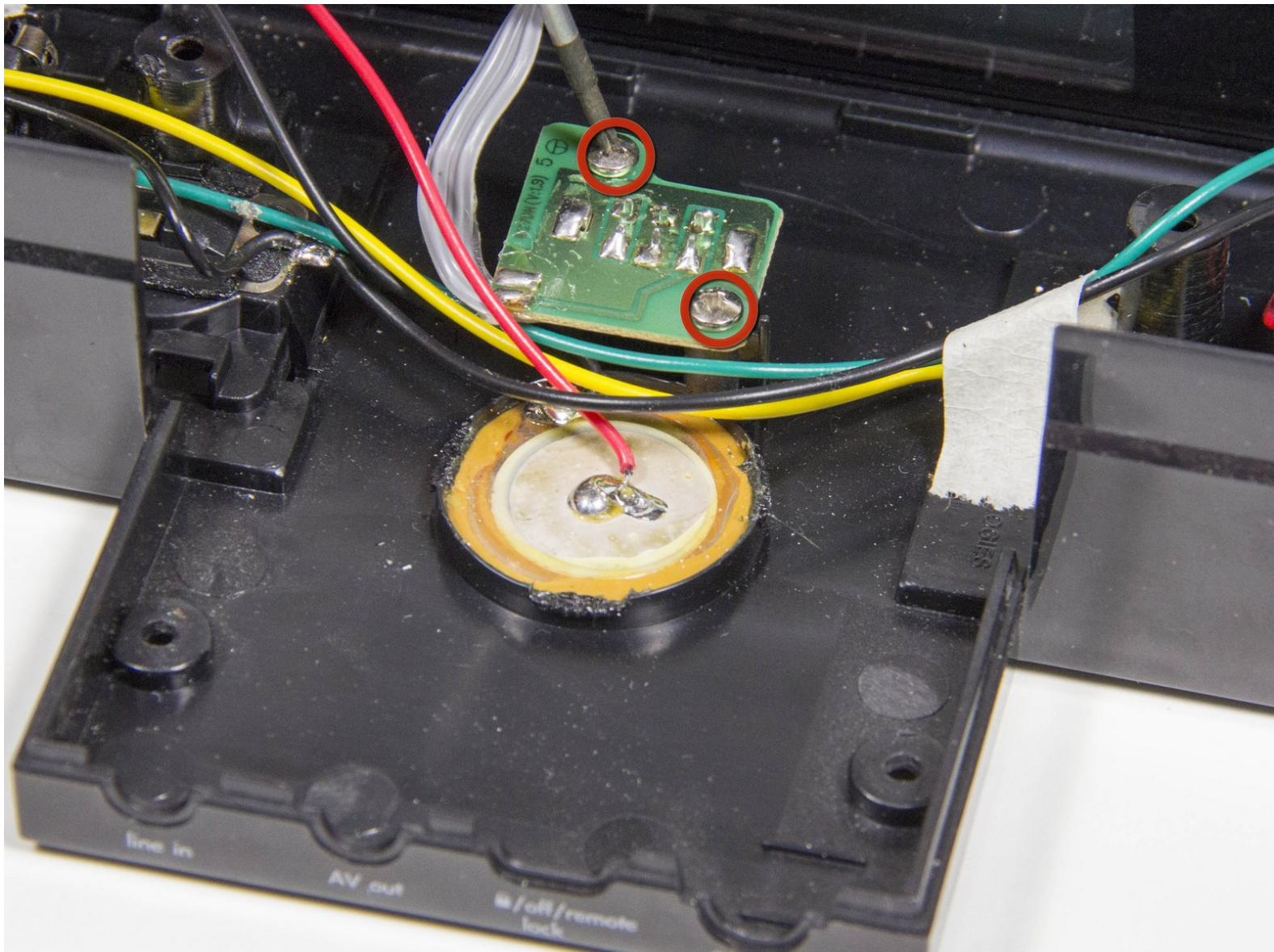




iHome iH27B Daylight Savings Switch Replacement

Use this guide to replace a daylight savings switch that is lost or broken.

Written By: John Kraemer



**TOOLS:**

- [Phillips #0 Screwdriver](#) (1)

**PARTS:**

- [Daylight Savings Switch](#) (1)

Step 1 — Outer Case



- Remove any iPod or apple music device connected to the iHome and unplug from any power source.
- Flip the iHome so the speakers are laying on a flat surface, and you have the concealed battery areas facing you.

Step 2



- Using your fingers, press down firmly on the plastic slide and push in the direction of the arrows shown above the word "Open" on the plastic.
- Remove the plastic slide from its location and set it aside.
- ⓘ These plastic slides are not interchangeable, so make sure each goes back to its original location in reassembly.
- Remove all 4 AA batteries by placing your fingernail at one end of the battery and applying force upwards until the battery is freed from its holder.
- Set the batteries aside, careful to not get them wet.
- Insert your fingernail or a prying tool under the notch of the plastic slide that is protecting the watch battery.
- Apply force in the direction of the arrow shown above the word "Open" on the plastic. The plastic piece covering the watch battery should come loose.
- Set this plastic covering aside as well.

Step 3



- Remove the following screws:

- Eight 10 mm Phillips #0

i Cataloging each screw by size in plastic bags or separate places on a flat surface will make them easier to find when reassembling.

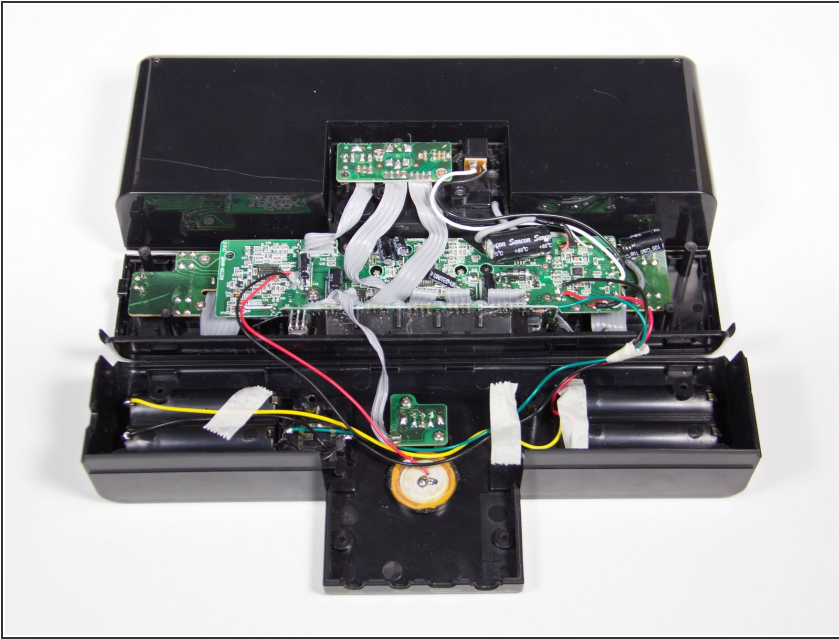
Step 4



- Use your fingers or a plastic opening tool to carefully pry apart the plastic connections still connecting the base to the top.

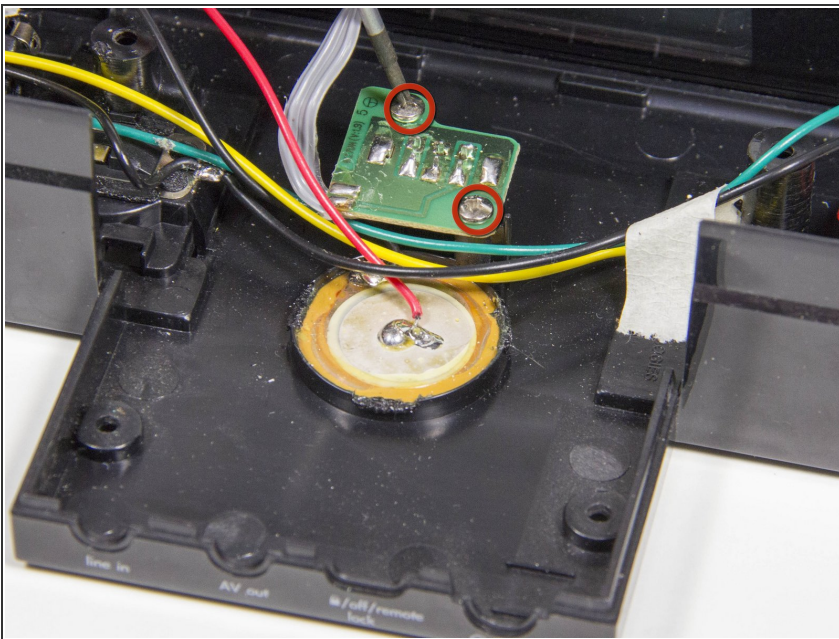
! Be careful not to pry too hard. Cracking the plastic connections could make reassembly harder.

Step 5



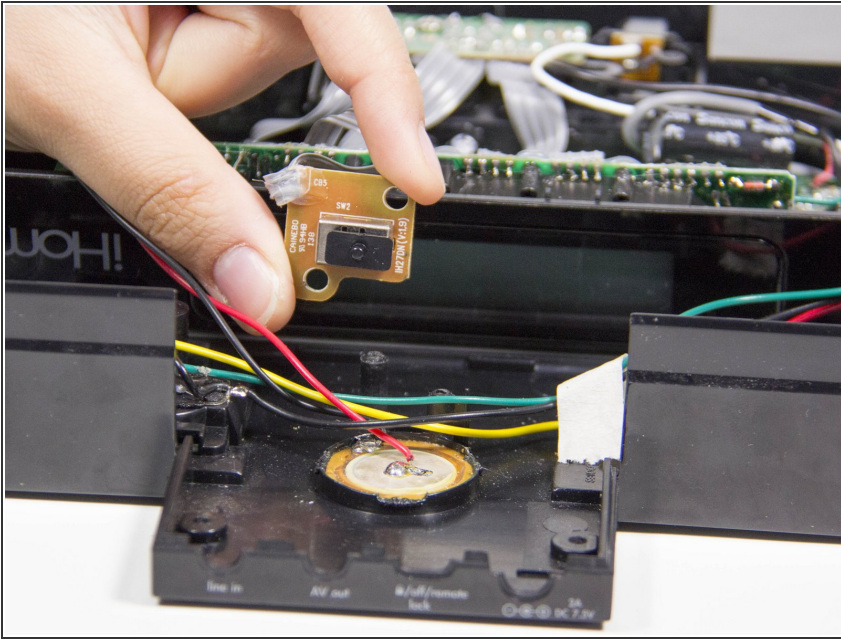
- Slowly lift the plastic base towards you and lay it on the flat surface. The base should still be connected to the rest of the iHome by a few wires.
- You should have visible access to most of the components inside the iHome now.

Step 6 — Daylight Savings Switch



- Remove the following screws:
 - Two 10 mm Phillips #0

Step 7



- Remove switch and replace with new one.

To reassemble your device, follow these instructions in reverse order.