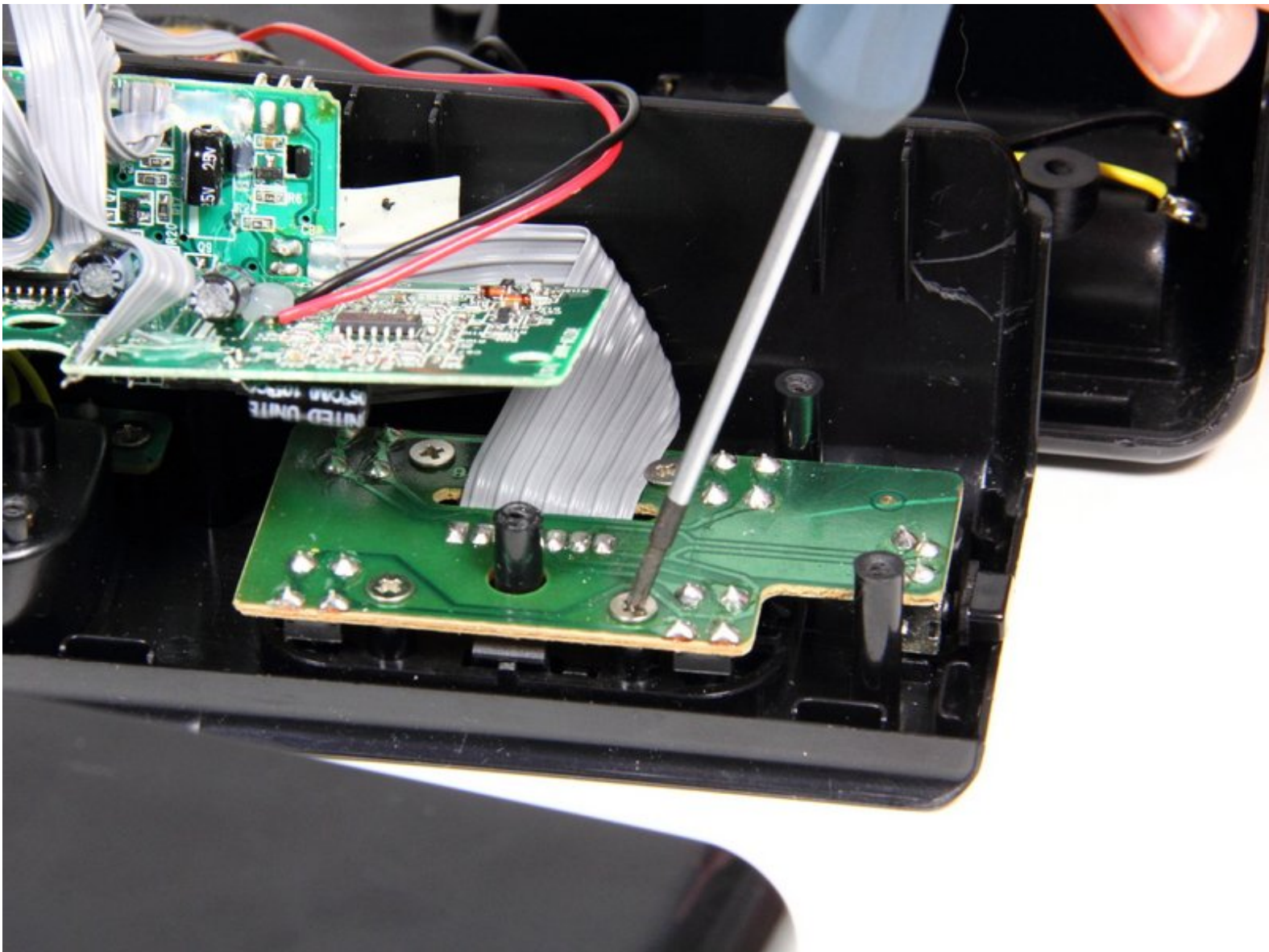




# iHome iH27B Left Control Button Replacement

Use this guide to replace the left control button on the top of the iHome.

Written By: John Kraemer

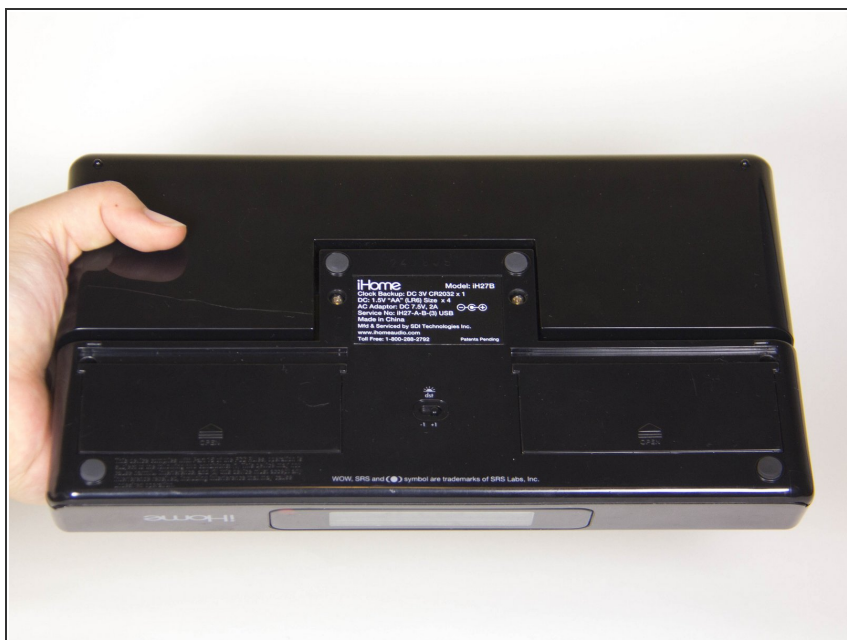




## TOOLS:

- [Flathead Screwdriver](#) (1)
- [Left Control Button](#) (1)
- [Phillips #0 Screwdriver](#) (1)

## Step 1 — Outer Case



- Remove any iPod or apple music device connected to the iHome and unplug from any power source.
- Flip the iHome so the speakers are laying on a flat surface, and you have the concealed battery areas facing you.

## Step 2



- Using your fingers, press down firmly on the plastic slide and push in the direction of the arrows shown above the word "Open" on the plastic.
- Remove the plastic slide from its location and set it aside.
- ⓘ These plastic slides are not interchangeable, so make sure each goes back to its original location in reassembly.
- Remove all 4 AA batteries by placing your fingernail at one end of the battery and applying force upwards until the battery is freed from its holder.
- Set the batteries aside, careful to not get them wet.
- Insert your fingernail or a prying tool under the notch of the plastic slide that is protecting the watch battery.
- Apply force in the direction of the arrow shown above the word "Open" on the plastic. The plastic piece covering the watch battery should come loose.
- Set this plastic covering aside as well.



## Step 3



- Remove the following screws:

- Eight 10 mm Phillips #0

**i** Cataloging each screw by size in plastic bags or separate places on a flat surface will make them easier to find when reassembling.

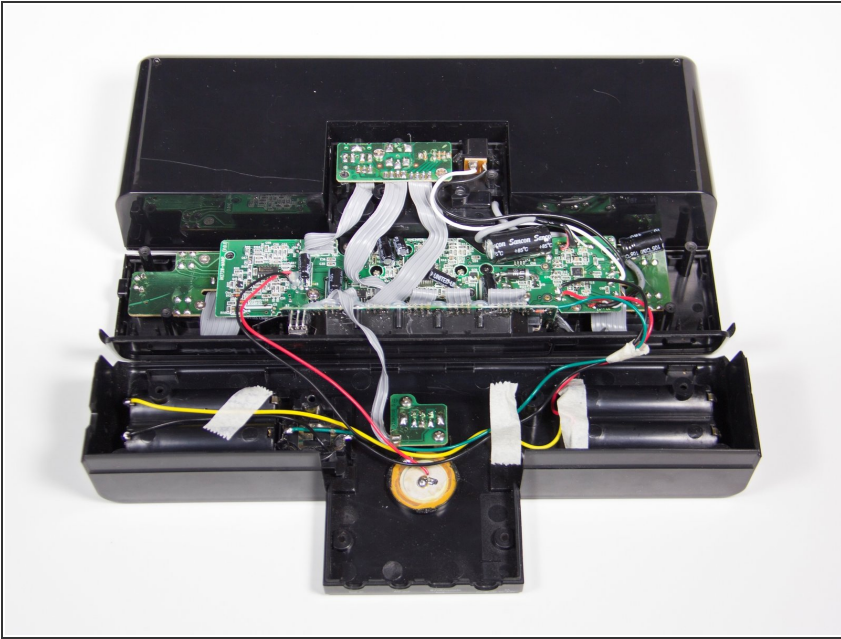
## Step 4



- Use your fingers or a plastic opening tool to carefully pry apart the plastic connections still connecting the base to the top.

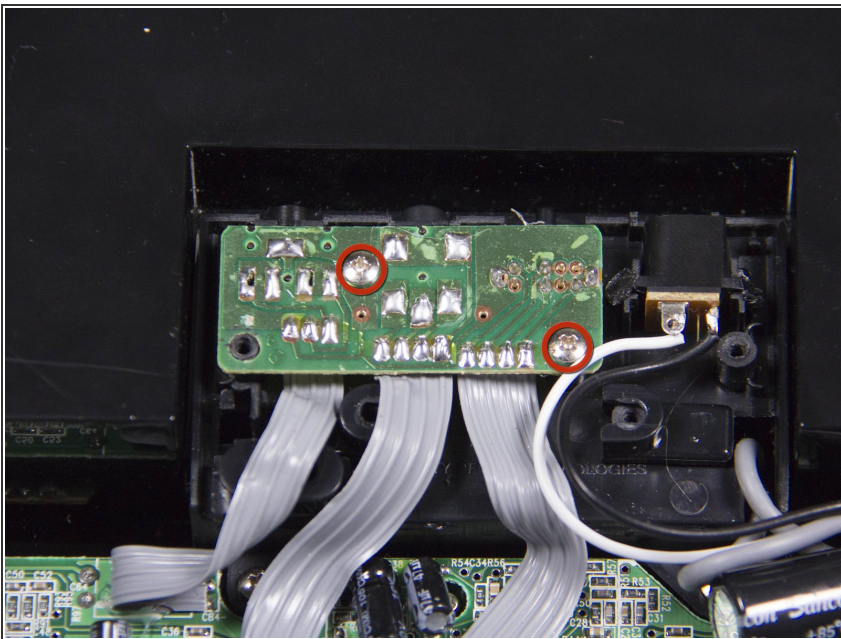
**!** Be careful not to pry too hard. Cracking the plastic connections could make reassembly harder.

## Step 5



- Slowly lift the plastic base towards you and lay it on the flat surface. The base should still be connected to the rest of the iHome by a few wires.
- You should have visible access to most of the components inside the iHome now.

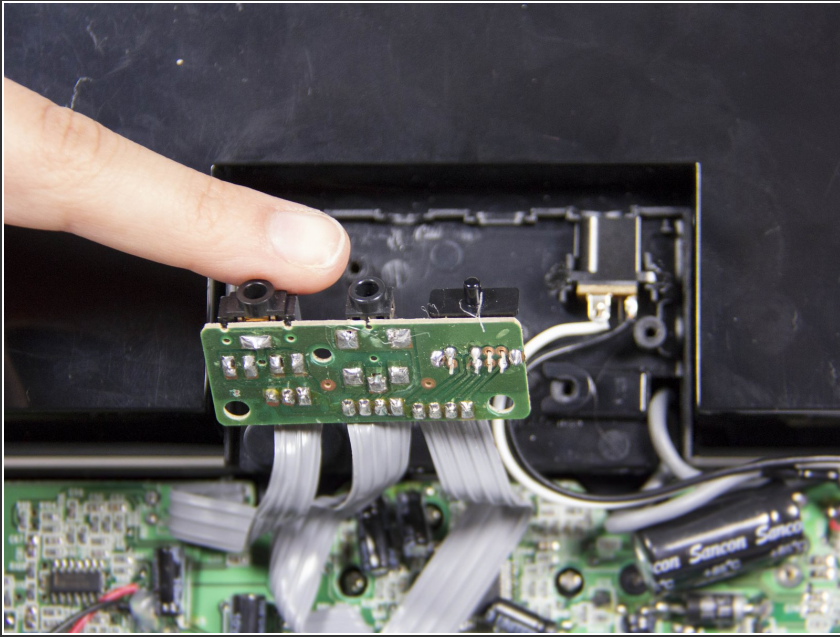
## Step 6 — AV circuit board



- Remove the following screws:
  - Two 10 mm Phillips #0

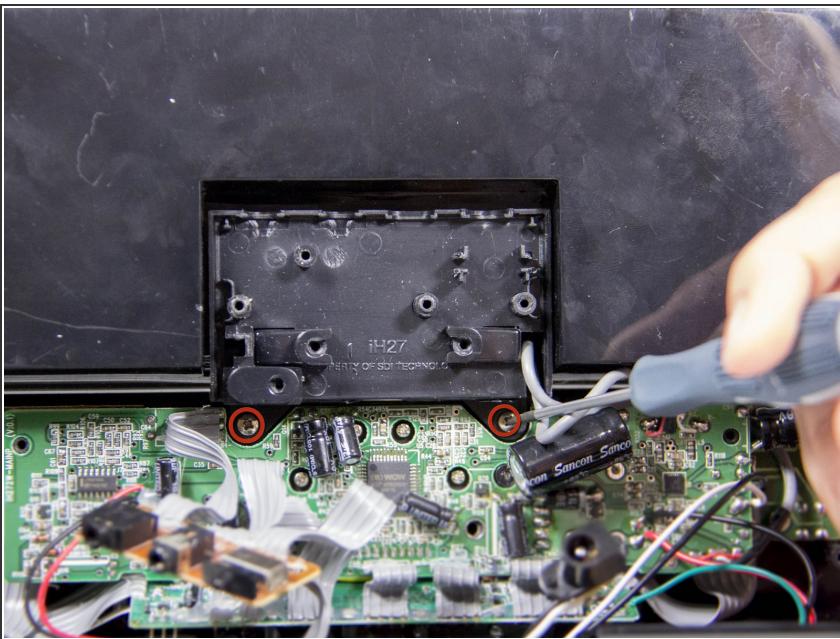


## Step 7



- Pull out the AV circuit board and lift it up and out of the way to allow access to other components.

## Step 8 — Main Motherboard



- Remove the following screws:
  - Two 10 mm Phillips #0
- Pull the speakers away and set them aside for now. They should still be connected to the rest of the iHome by two wires.

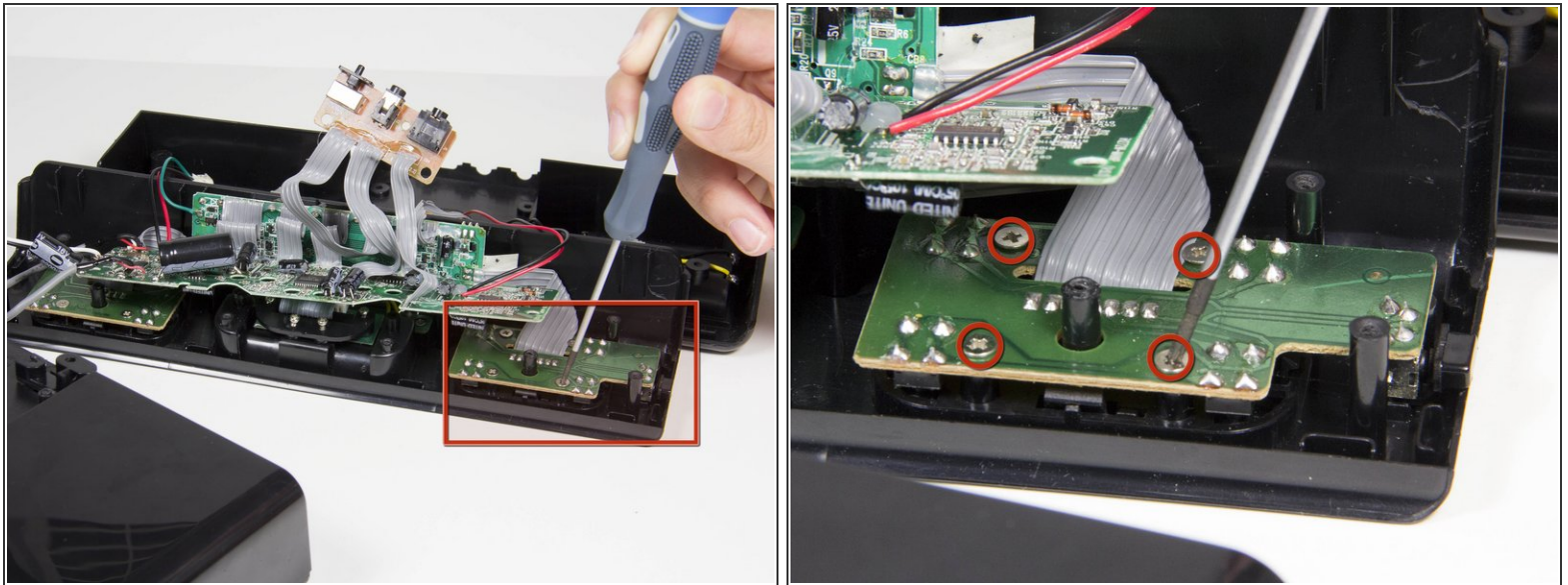
## Step 9



- Remove the following 6 screws:
  - Two 7 mm Phillips #0
  - Three 10 mm Phillips #2
  - One 9 mm Phillips #2
- ⓘ Set the screws aside, careful to not mix them up with your other screws.

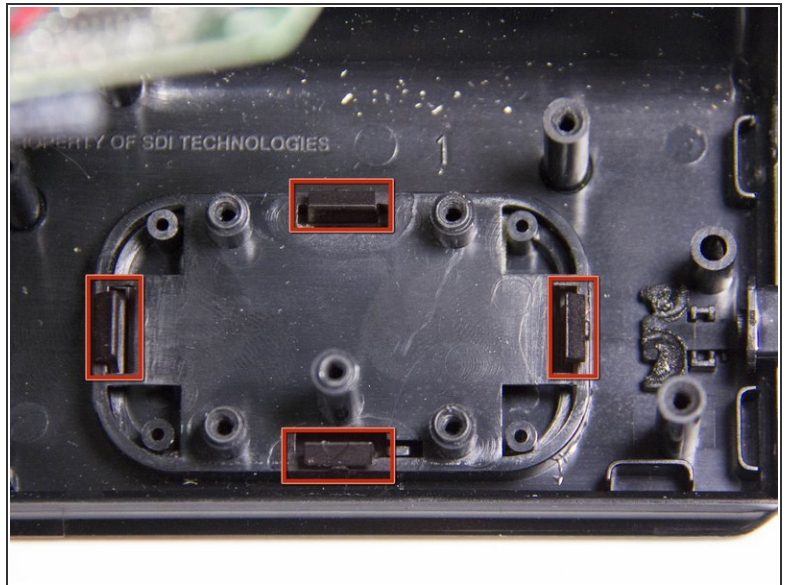
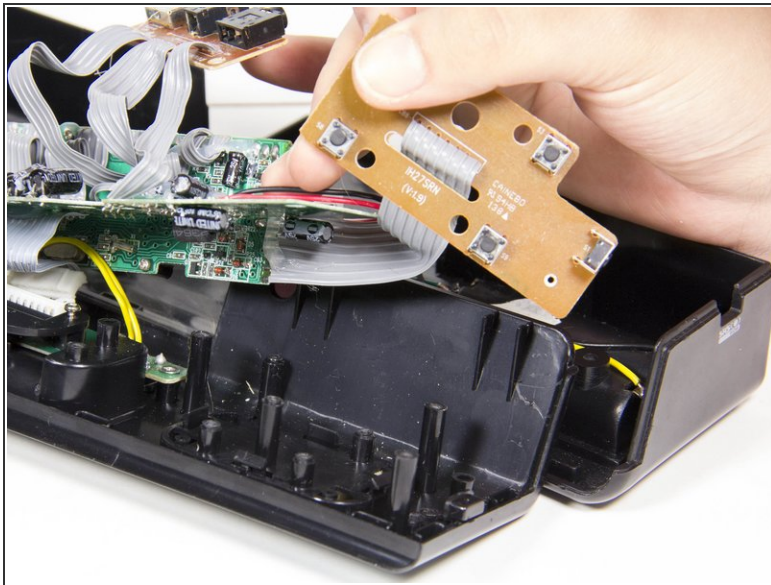


## Step 10 — Left Control Button



- ☑ Remember that the device is still upside down, so the left control button will be on your right hand side. Then rotate the device 180 degrees. You should see the device as it looks in the picture.
- Carefully lift the iHome about an inch from your surface to verify you are going to the correct spot, because the iHome looks symmetrical at this point.
- Carefully lift the main motherboard out of the way of the button control circuit board.
- Remove the following screws:
  - Four 6 mm Phillips #2

## Step 11



- Carefully lift the button control motherboard out of the way.
- Place your fingers on each of the four notches. Apply pressure towards the center, and push downwards until the plastic piece is dislodged from its casing.
- If your fingers aren't working, use a flathead screwdriver or plastic prying tool to give you extra leverage.

## Step 12



- Replace your cracked or otherwise broken button with the new button.

To reassemble your device, follow these instructions in reverse order.