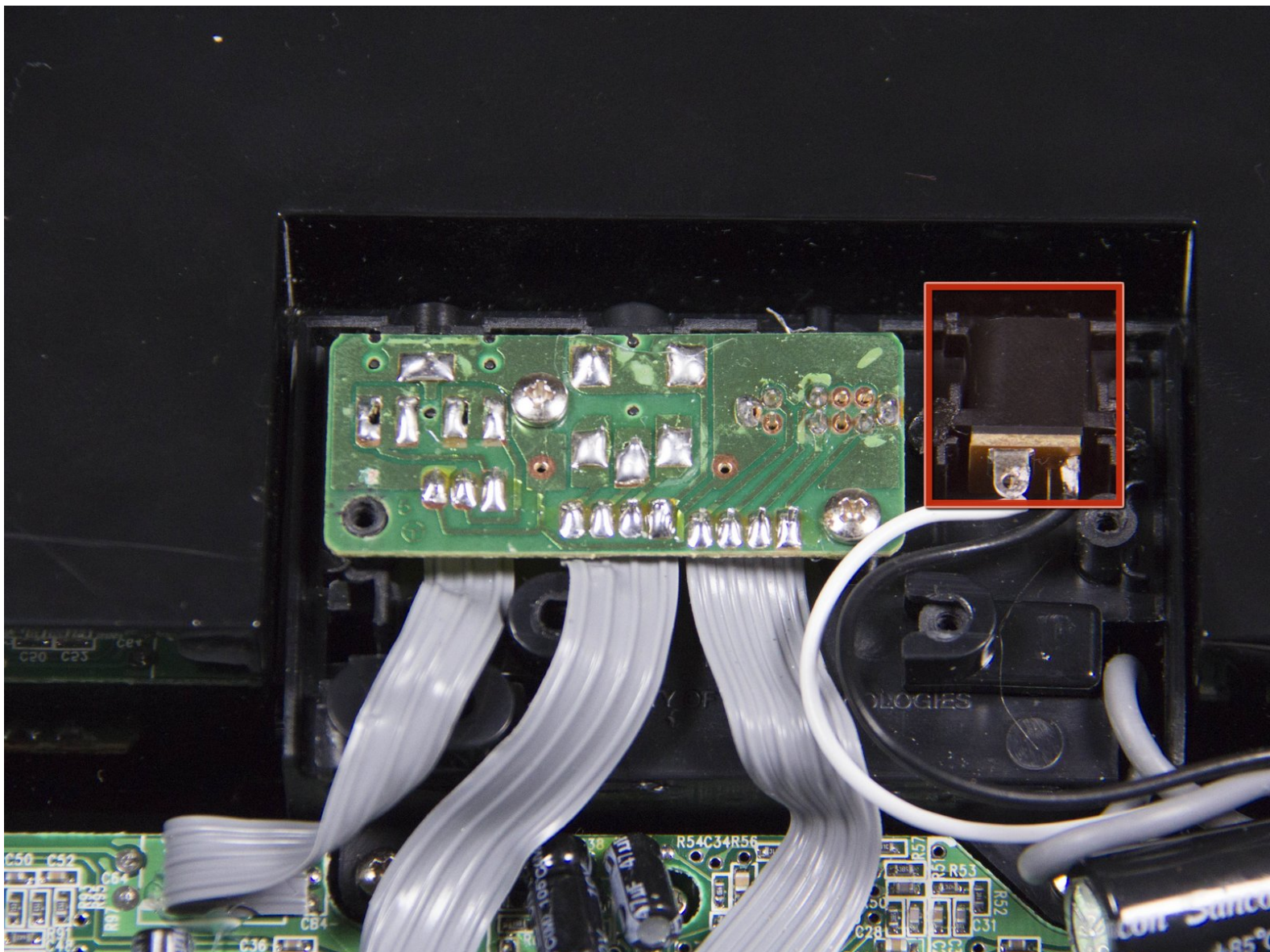




iHome iH27B Power Connector Replacement

Use this guide to replace the power connector if your charger will no longer plug into the device

Written By: John Kraemer



**TOOLS:**

- [Phillips #0 Screwdriver](#) (1)
- [Flush Wire Cutters](#) (1)

**PARTS:**

- [power connector](#) (1)
- [Electrical Tape in 6 Assorted Colors](#) (1)

Step 1 — Outer Case



- Remove any iPod or apple music device connected to the iHome and unplug from any power source.
- Flip the iHome so the speakers are laying on a flat surface, and you have the concealed battery areas facing you.

Step 2



- Using your fingers, press down firmly on the plastic slide and push in the direction of the arrows shown above the word "Open" on the plastic.
- Remove the plastic slide from its location and set it aside.
- ⓘ These plastic slides are not interchangeable, so make sure each goes back to its original location in reassembly.
- Remove all 4 AA batteries by placing your fingernail at one end of the battery and applying force upwards until the battery is freed from its holder.
- Set the batteries aside, careful to not get them wet.
- Insert your fingernail or a prying tool under the notch of the plastic slide that is protecting the watch battery.
- Apply force in the direction of the arrow shown above the word "Open" on the plastic. The plastic piece covering the watch battery should come loose.
- Set this plastic covering aside as well.

Step 3



- Remove the following screws:

- Eight 10 mm Phillips #0

i Cataloging each screw by size in plastic bags or separate places on a flat surface will make them easier to find when reassembling.

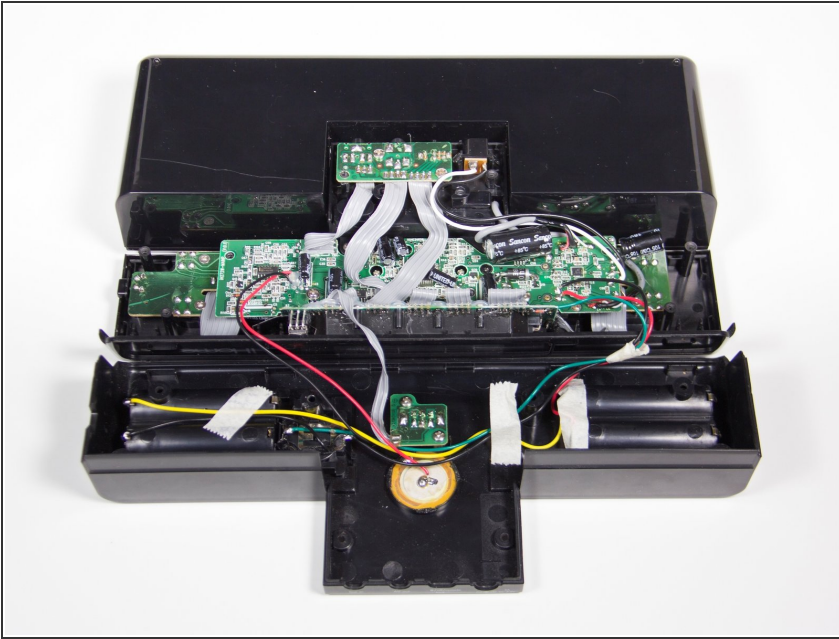
Step 4



- Use your fingers or a plastic opening tool to carefully pry apart the plastic connections still connecting the base to the top.

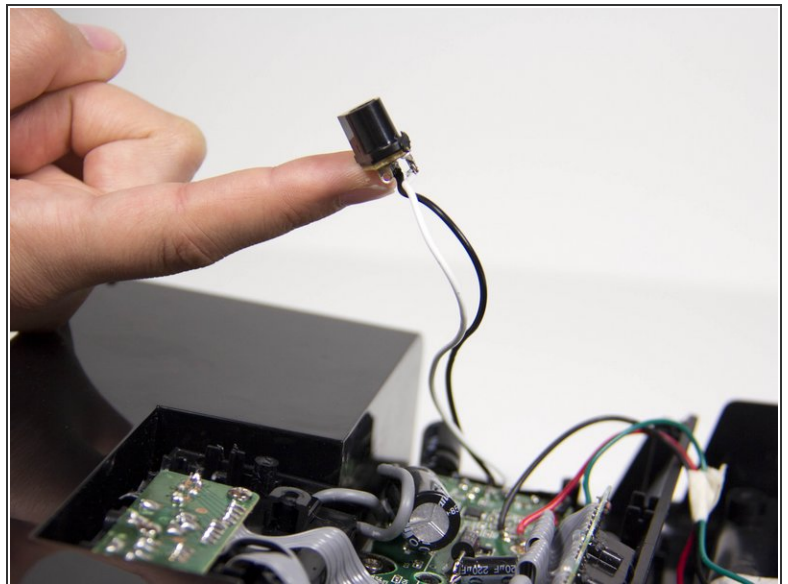
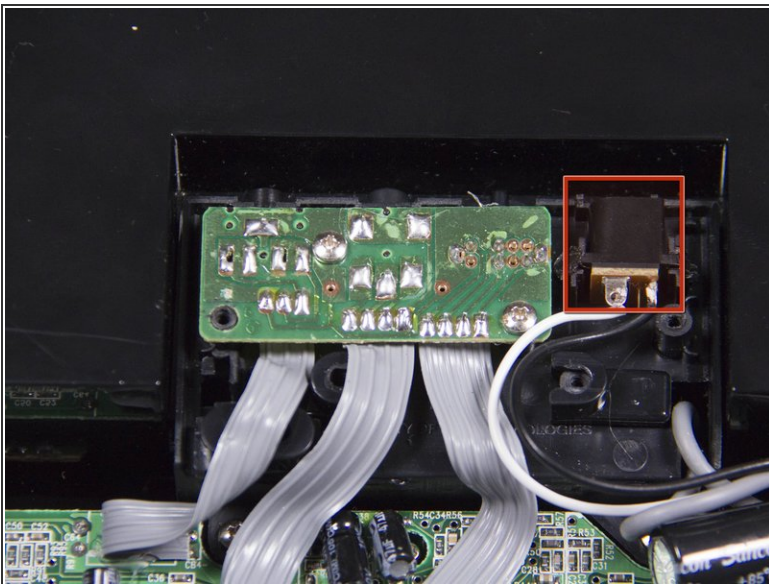
! Be careful not to pry too hard. Cracking the plastic connections could make reassembly harder.

Step 5



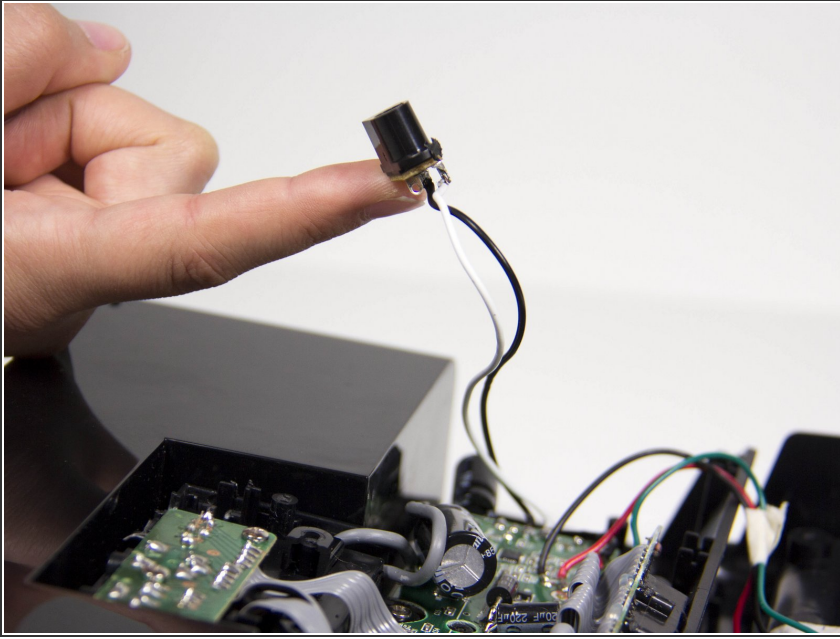
- Slowly lift the plastic base towards you and lay it on the flat surface. The base should still be connected to the rest of the iHome by a few wires.
- You should have visible access to most of the components inside the iHome now.

Step 6 — Power Connector



- Firmly grasp the power connector, which is the plastic rectangular piece with the white and black wires connected to it.
- Pull upwards and dislodge the connector.

Step 7



- Using the scissors on your wire strippers, cut the connecting wires.
- Using your wire strippers, remove about 1/4 " of the plastic tubing surrounding the end of your exposed wire, careful to not damage the wires.
- Using a wire-nut or electrician's tape, connect the wires of the replacement power connector to your exposed wires. Connect white wire to white, and black to black.

To reassemble your device, follow these instructions in reverse order.