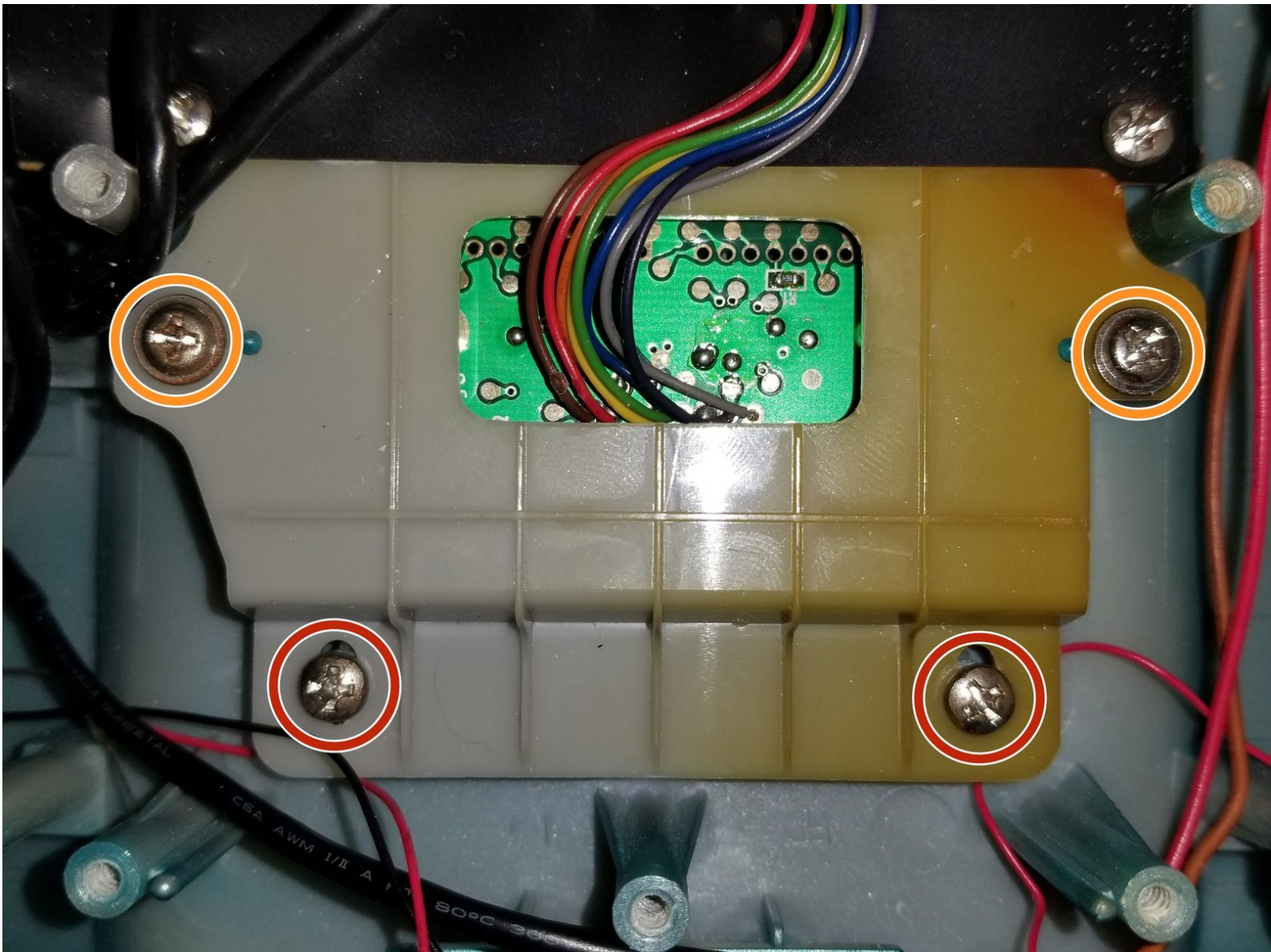




iHome iH3L Dock Replacement

Dock is unresponsive when attempting to connect iPod/iPhone.

Written By: Brittany Holloway



INTRODUCTION

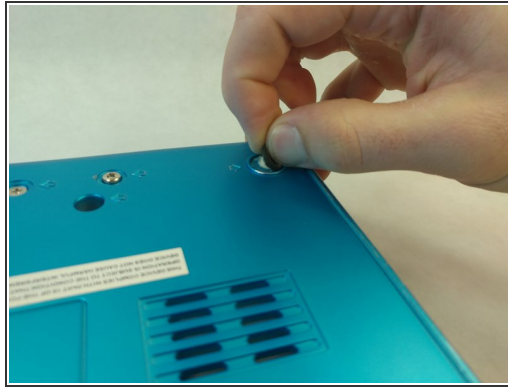
The iHome dock found at the top of the device is unresponsive when connected to an iPod/iPhone. The iHome dock may also be bent or broken and will need to be replaced in order to connect an iPod/iPhone.



TOOLS:

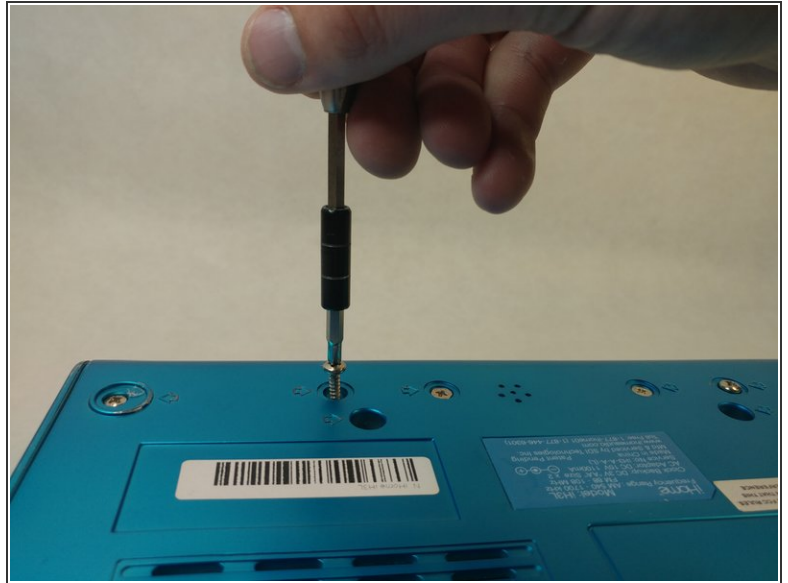
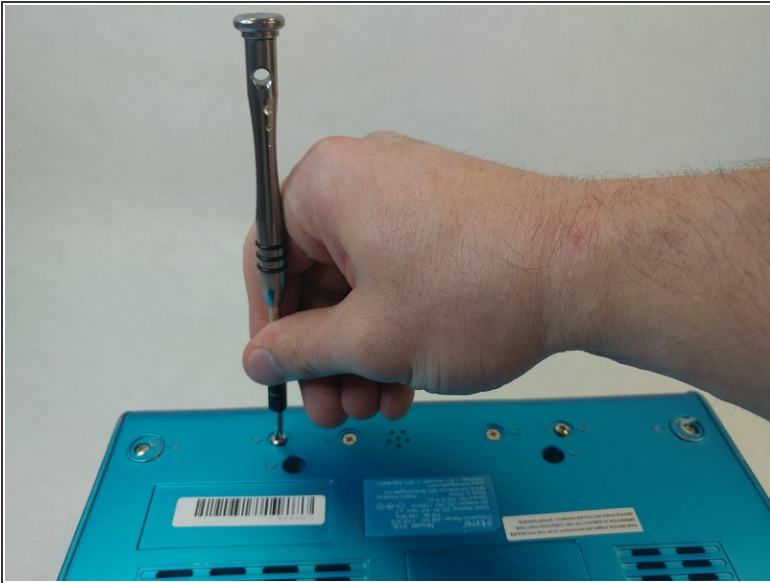
- [Phillips #2 Screwdriver](#) (1)
-

Step 1 — Speakers



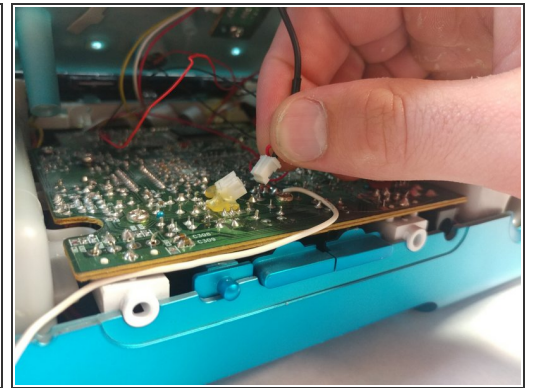
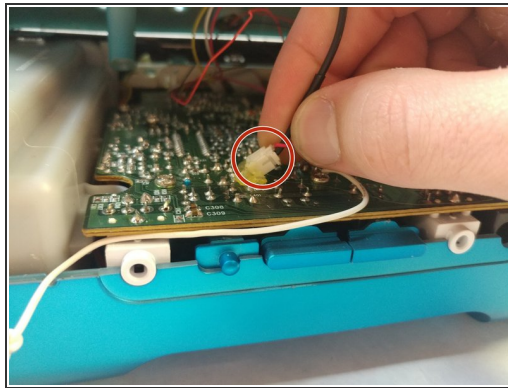
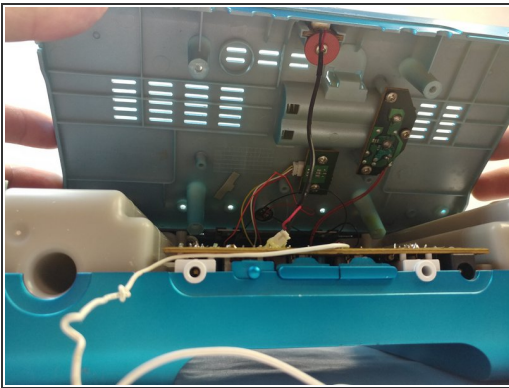
- Locate all screws on the back of the iHome. Each screw can be located by the arrows on the iHome.
 - Two Countersunk 9.7 mm Phillips #2 screws in the middle.
 - Two 15.9 mm Phillips #2 screws.
 - Six 13.9 mm Phillips #2 screws.
- Some screws are located under the black sticky pads. Gently remove the black sticky pads and it will expose the screws.
- Two 11.8 mm Phillips #2 screws.

Step 2



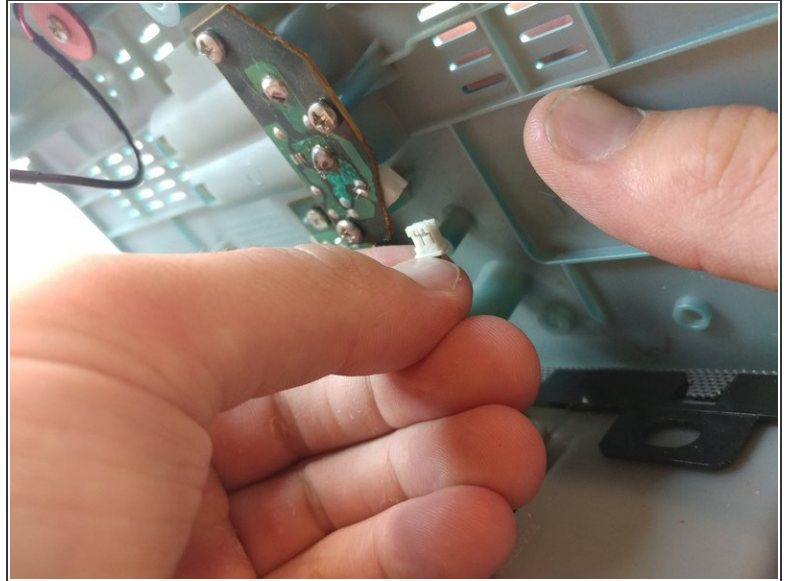
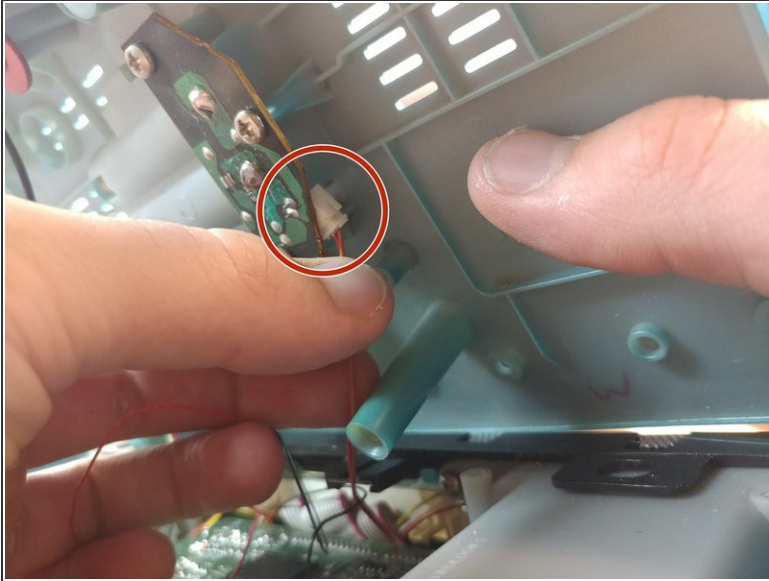
- Remove all screws indicated in the previous step.

Step 3



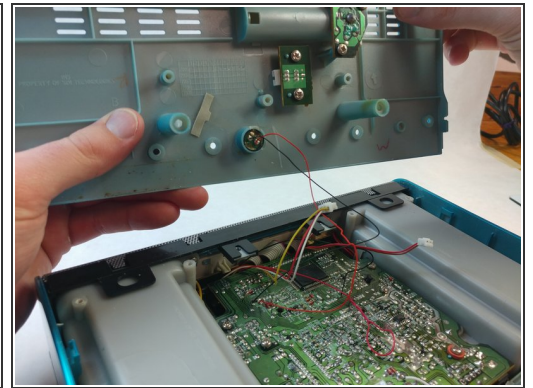
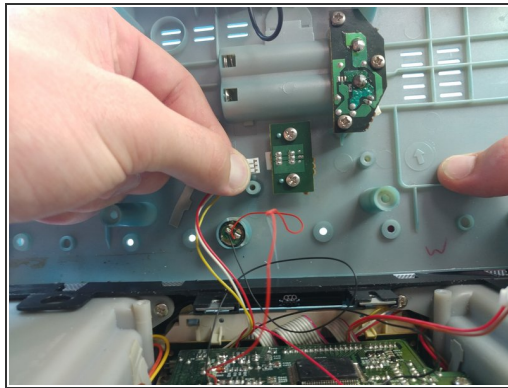
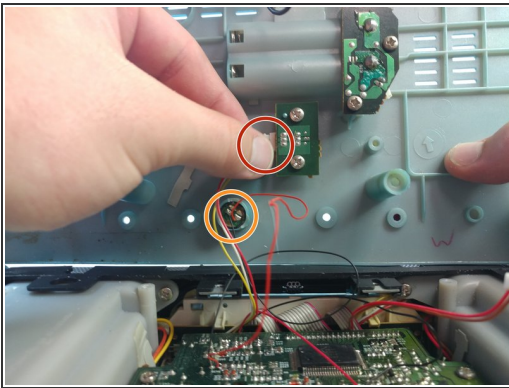
- Slowly tilt the bottom cover of the iHome up.
- ⚠ Do not yank the cover off, there is a wire connecting the cover to the circuit board.
- Disconnect the wire just by pulling on the connector gently.

Step 4



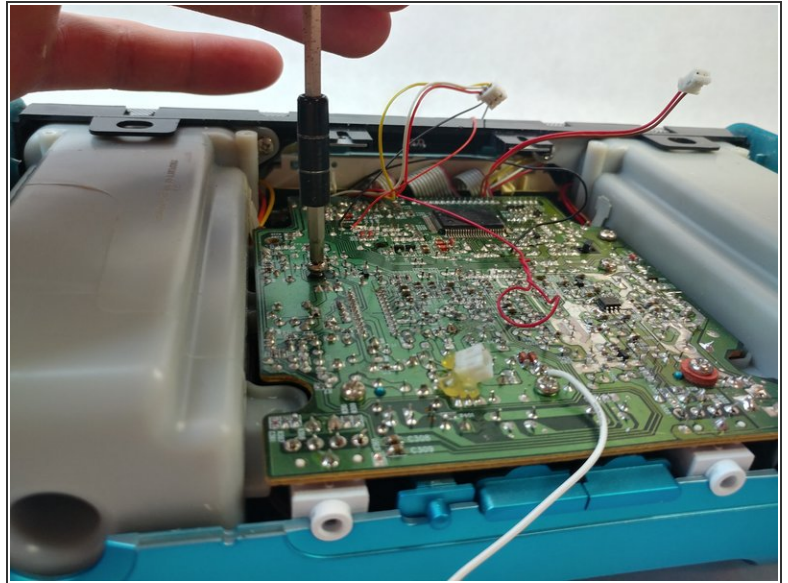
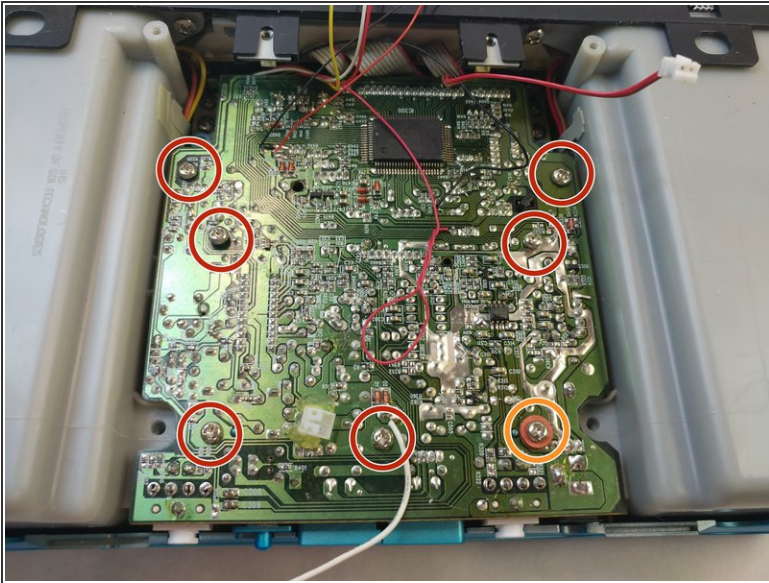
- Disconnect the next connector pin after slowly opening the lid more.

Step 5



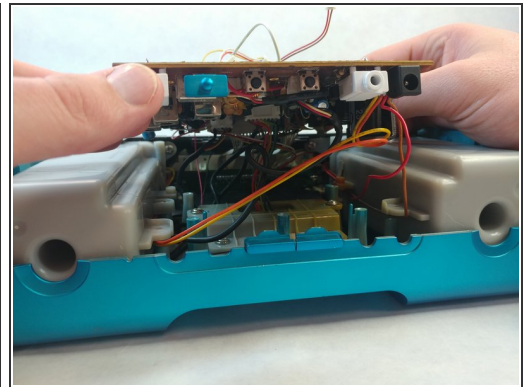
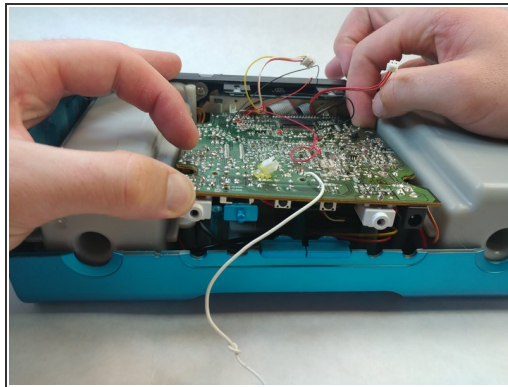
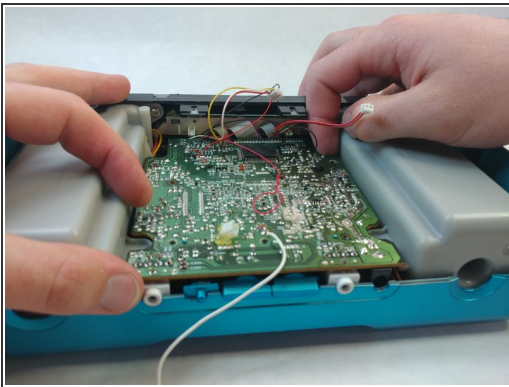
- Disconnect the final connector pin series and carefully set your lid behind the body of the iHome.
- The tiny speaker will not be disconnected for this repair, but you can easily remove it from the lid by means of a paperclip from the outside. While not necessary, this can help prevent damage to your device.

Step 6



- Remove the seven screws that are holding the motherboard in place:
 - Six 14 mm Phillips #2 screws.
 - One 14 mm Phillips #2 screw with two rubber washers on it.

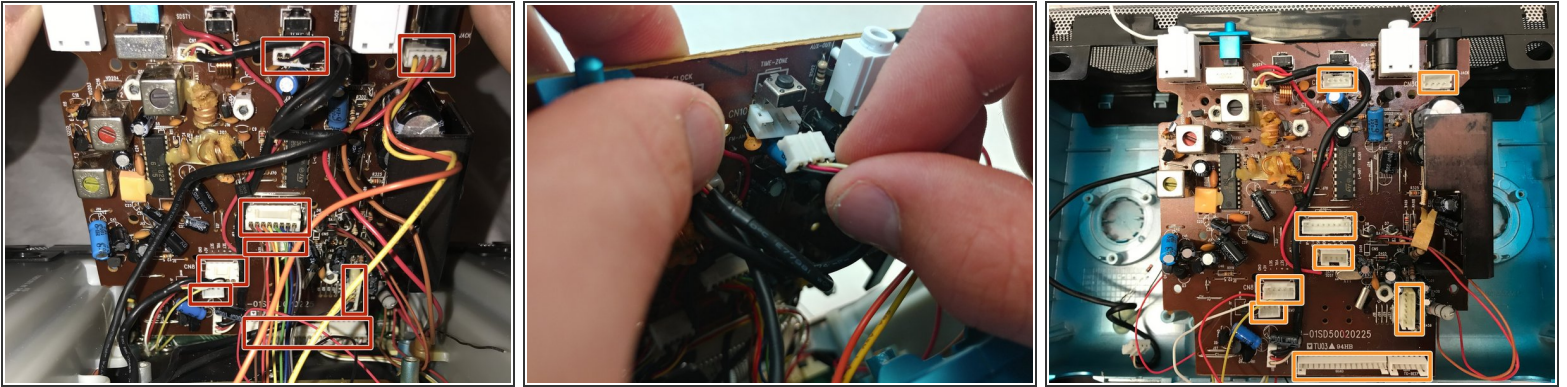
Step 7



- To remove the motherboard, gently lift up from opposite sides.

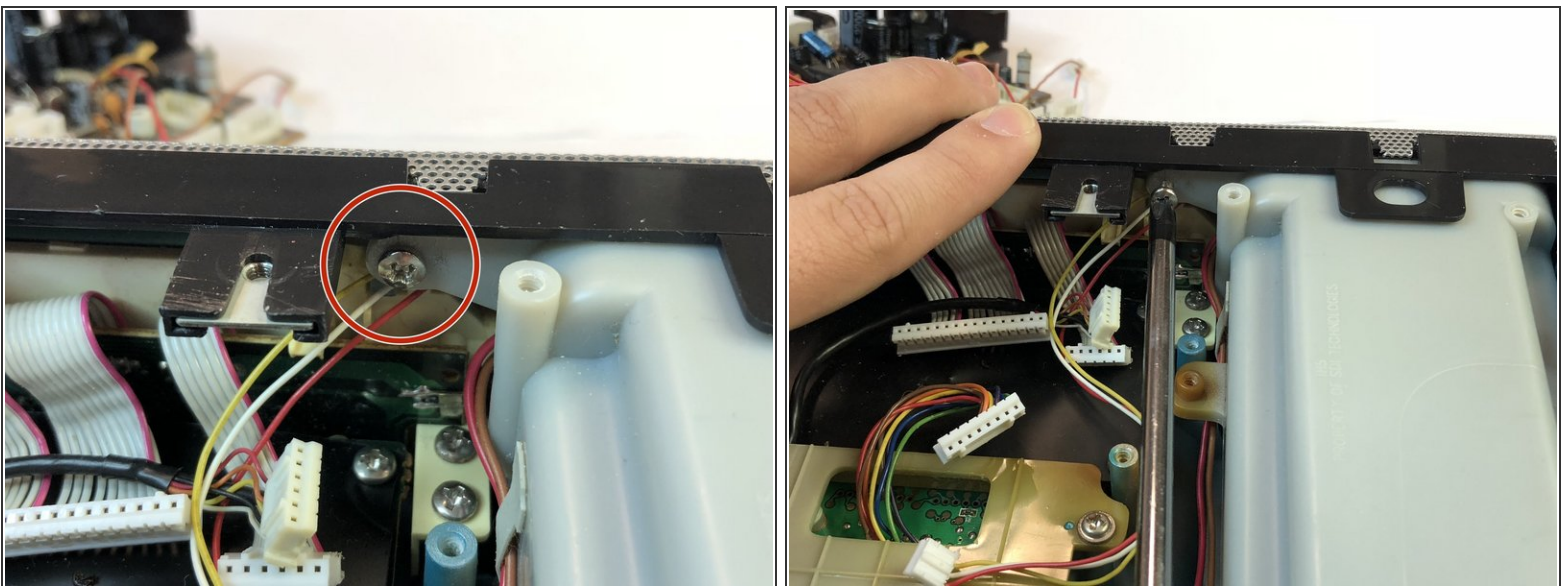
⚠ Be careful when lifting the motherboard. There are wires still connected to it on the backside.

Step 8



- Carefully tilt the motherboard up from the front.
- Disconnect the 8 connections by gently pulling on them. Starting from the front and work your way backwards.
- All 8 connectors disconnected.

Step 9



- Unscrew the screws holding the speakers onto the body. One on each side:
 - Two 14.3 mm Phillips #2 screws.

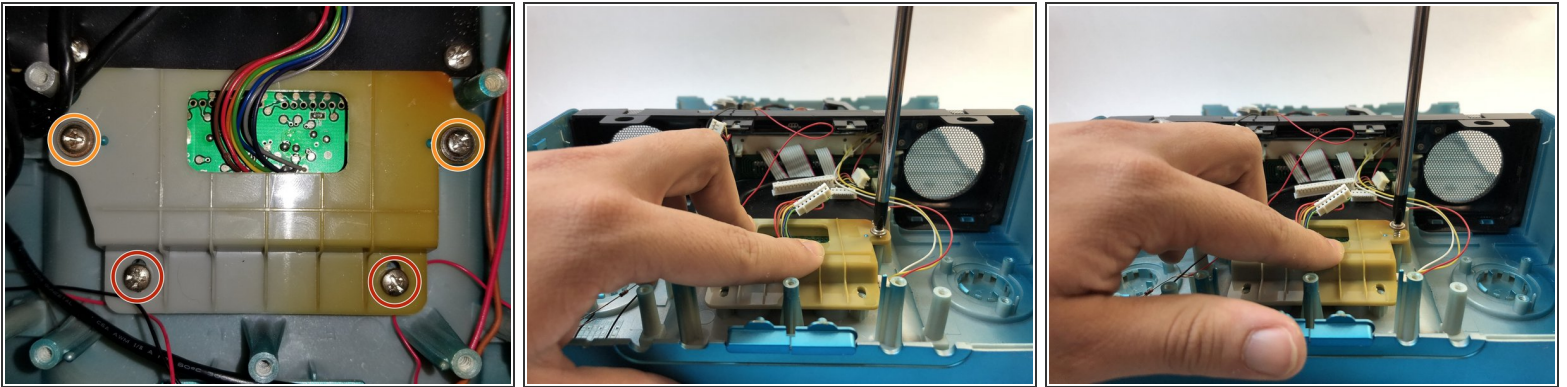
Step 10



- To remove the speakers from the iHome, gently lift up the back of the speaker and pull towards you. These are very secure so minor shaking may help release the speaker.
- Repeat for the other side.

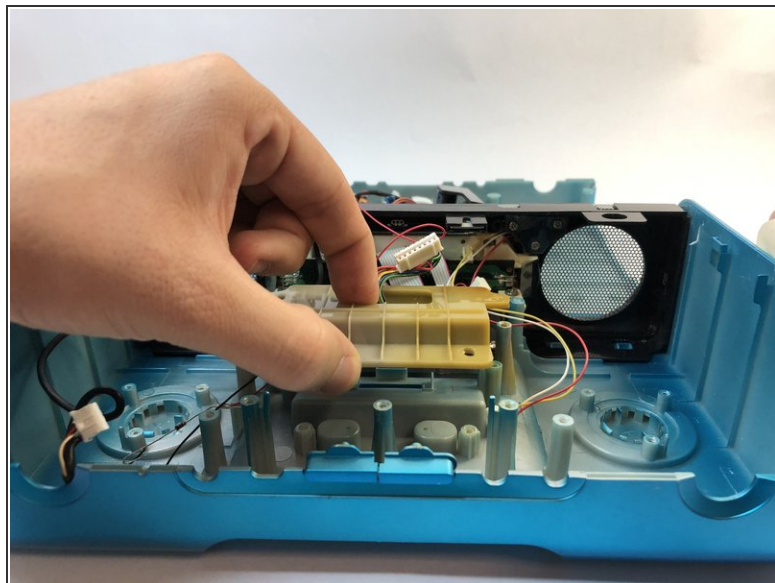
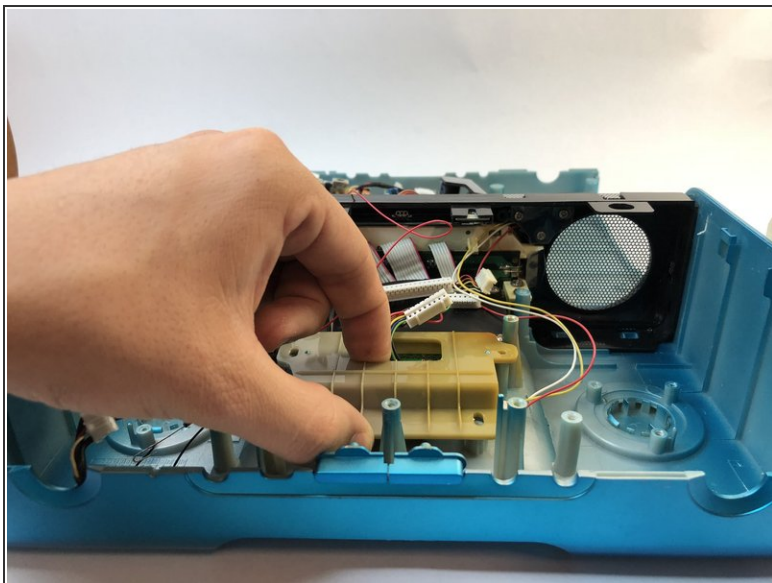
⚠ Be careful yanking on them, the speakers are connected together.

Step 11 — Dock



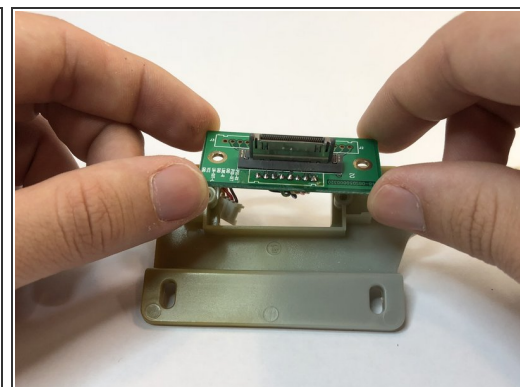
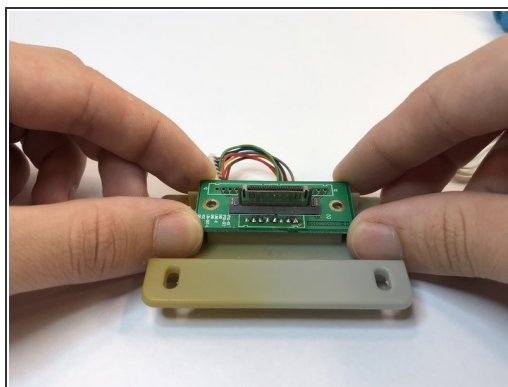
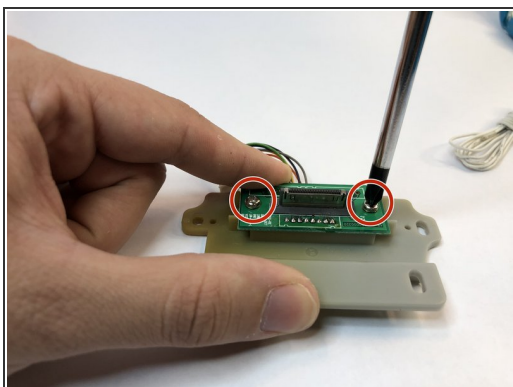
- Remove the four screws from the mounting bracket.
 - Two 11.7 mm Phillips #2 screws.
 - Two 12 mm Phillips #2 screws with metal washers attached to them.

Step 12



- Lift out the bracket and rotate it towards you.

Step 13



- Unscrew the two 10 mm Phillips #2 screws and remove the dock and chip.
- The wiring harness is loaded through the bracket, so be careful when removing the chip.

To reassemble your device, follow these instructions in reverse order.