



# iHome iP21 Clock Battery Replacement

Replacing the clock battery in the iP21 is a quick and simple repair.

Written By: Brandy



---

## INTRODUCTION

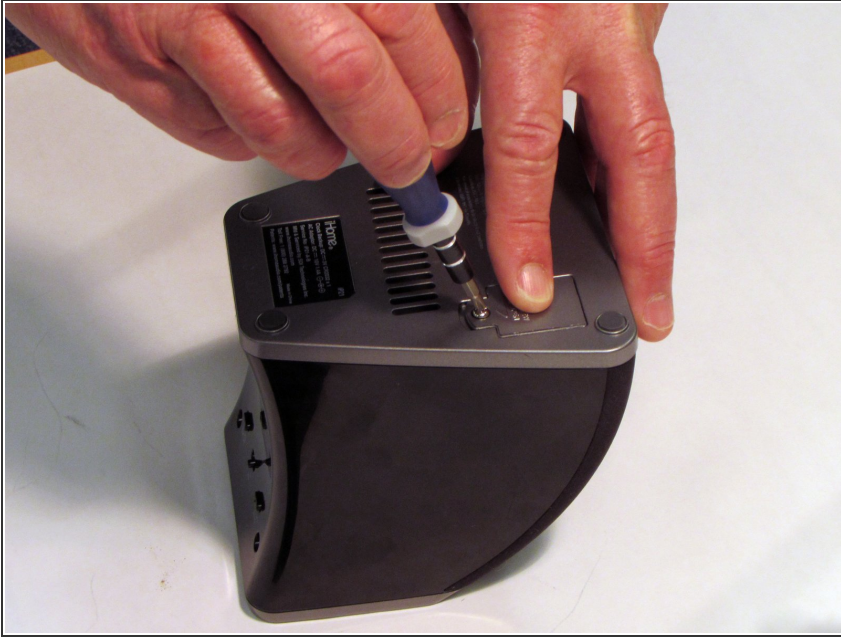
This guide shows how to replace the battery of your iP21.



### TOOLS:

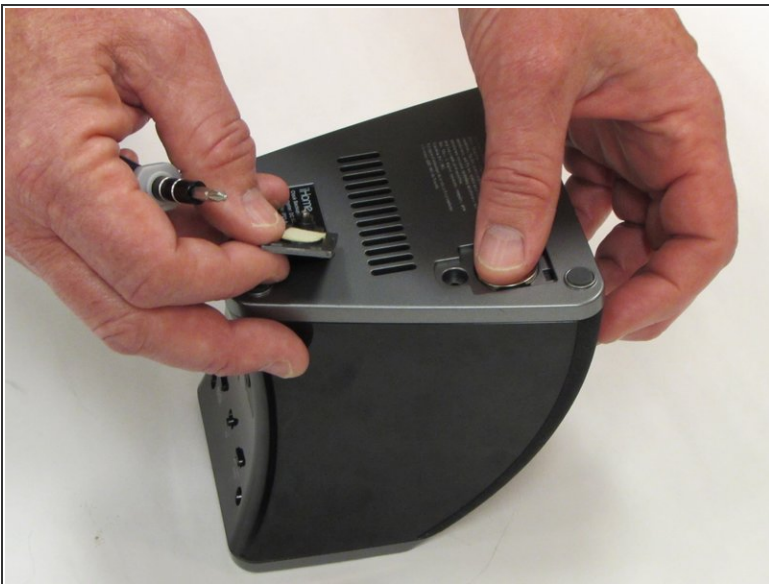
- [Phillips #1 Screwdriver](#) (1)
-

## Step 1 — Battery compartment door



- Place the ip21 top side down.
- Remove the battery compartment door with its integrated 7mm screw, using the iFixit Phillips #1 screwdriver bit.

## Step 2 — Battery



- Lift battery with fingers or using spudger

To reassemble your device, follow these instructions in reverse order.