



iHome iP21 Docking Station Pin Replacement

Replacement of the iP21's Docking Station Pin can extend the life of your device.

Written By: Brandy



INTRODUCTION

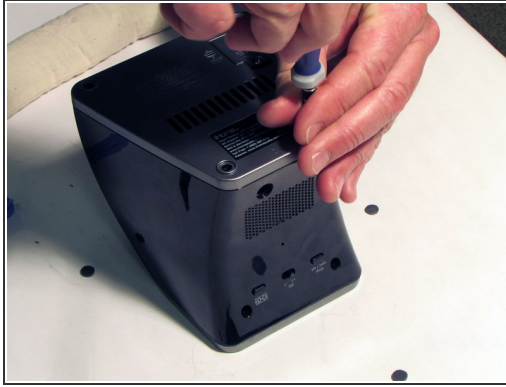
This guide demonstrates how to replace the 30-pin docking mount of the iP21. The 30-pin docking mount is where the iPod/iPhone connects to the iP21 and where the iP21 charges your iPod/iPhone.



TOOLS:

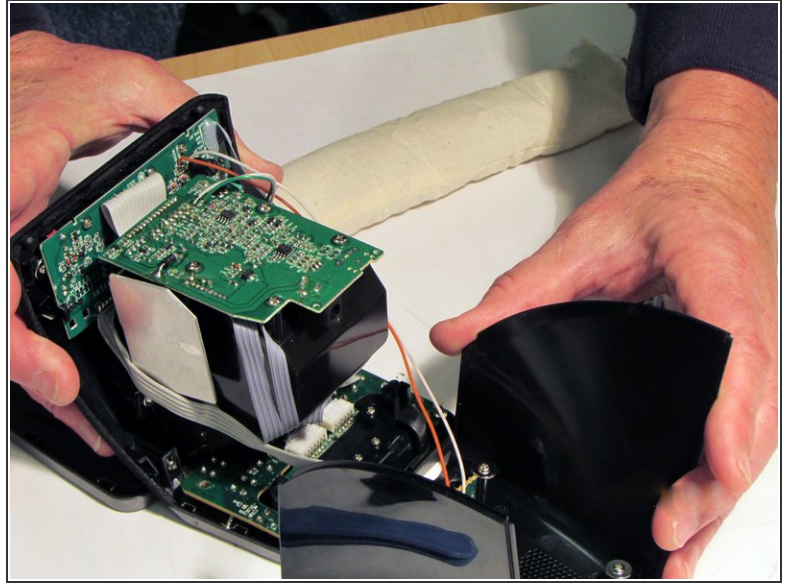
- [Phillips #1 Screwdriver](#) (1)
 - [Phillips #2 Screwdriver](#) (1)
 - [Spudger](#) (1)
-

Step 1 — Base



- Pry the four rubber feet from the bottom of the iP21 to expose four 11mm screws.
- Unscrew the four 11mm screws from the base.
- Pry the base loose using the spudger.
- Remove the base by hand.

Step 2 — Housing



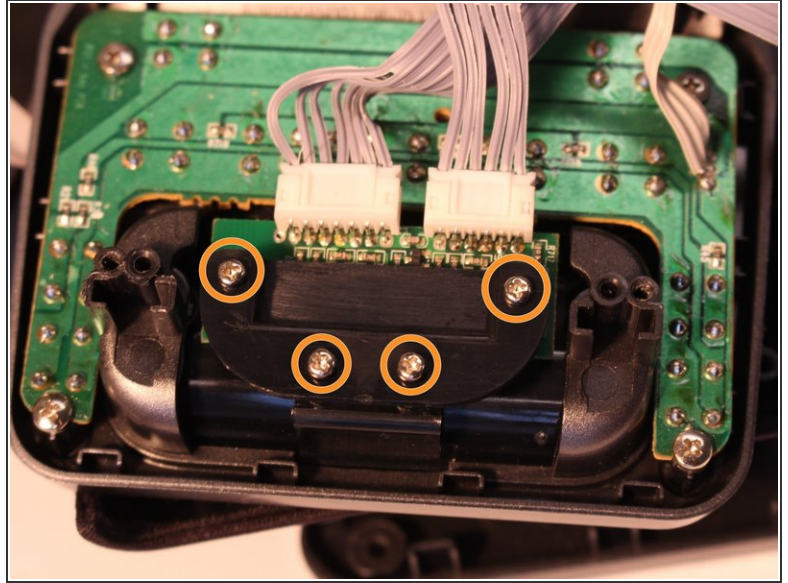
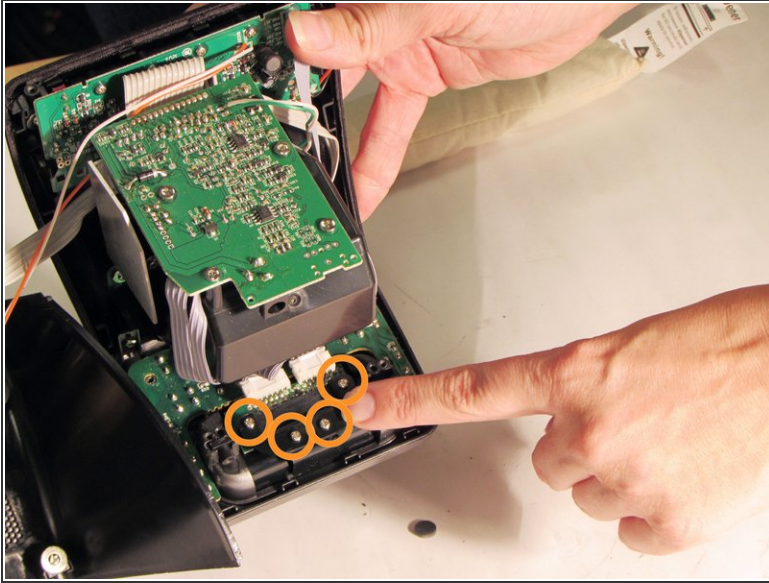
- Remove the two black 6mm screws connecting the main circuit board to the housing top.
- Grasp front housing and back housing firmly.
- Gently pull front housing from the back housing.

Step 3 — 30-pin docking mount



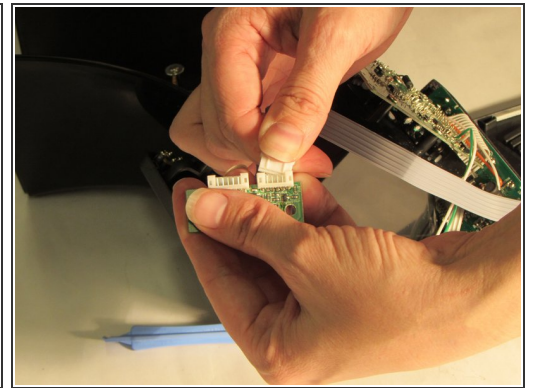
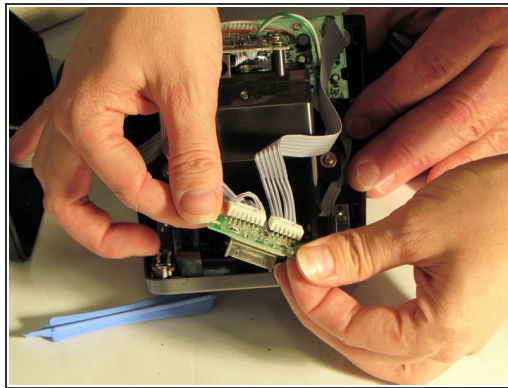
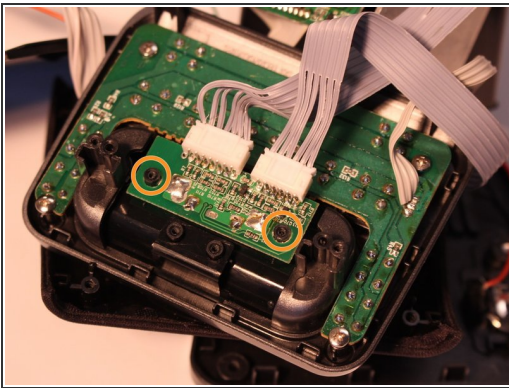
- Locate the 30-pin docking mount on the iP21. The 30-pin docking mount is visible on top of the iP21.

Step 4 — Protective cover



- Remove the four 4mm screws from the protective cover using the iFixit Phillips #1 bit

Step 5 — Ribbon cables



- Grasp plastic cable connector ends
- Remove the mini circuit board with 30-pin mounting dock from the two black plastic pegs.
- Rock gently back and forth and pull to detach mini circuit board with 30-pin mounting dock attached.

To reassemble your device, follow these instructions in reverse order.